



ttp consulting

transport planning specialists

Devonshire House School,
69 Fitzjohn's Avenue, London.
NW3 6PD

Transport Statement

June 2015

TTP Consulting Ltd
111-113 Great Portland Street
London W1W 6QQ
Tel: 020 3008 8940

www.ttp-consulting.co.uk

Registered in England: 7441800

Contents

1	INTRODUCTION	1
2	EXISTING SITUATION	3
	Site Location.....	3
	Devonshire House School.....	3
	Access and Parking	3
	Local Highway Network	4
	On-Street Parking	4
	Existing Travel Patterns	5
3	ACCESSING THE SITE BY NON-CAR MODES	7
	Public Transport	8
	Public Transport Accessibility Level (PTAL)	9
4	DEVELOPMENT PROPOSALS.....	11
	Trip Generation	12
	Servicing.....	12
	Travel Plan	12
5	POLICY	14
	National Planning Policy Framework (March 2012)	14
	Regional Guidance	14
	Local Guidance	15
6	SUMMARY AND CONCLUSION.....	18
	Summary	18
	Conclusion	19

Figures

Figure 1 – School Location

Appendices

- Appendix A - CPZ Plan
- Appendix B - TfL Bus Map
- Appendix C - TfL PTAL Summary
- Appendix D - Existing and Proposed Layout Plans
- Appendix E - Site Layout Plan
- Appendix F - School Travel Plan (2013/2014)

1 INTRODUCTION

- 1.1 TTP Consulting is retained to provide transport advice in relation to the proposed extension and alteration works to Devonshire House School at No.69 Fitzjohn's Avenue in the London Borough of Camden (planning reference 2015/1635/P).
- 1.2 The school is located in large Victorian houses converted for educational use on two neighbouring sites in Hampstead, north London. In addition, to the application site at No.69 Fitzjohn's Avenue the school occupies buildings at No.2-4 Arkwright Road, 6 Arkwright Road and the Long Hall. The location of the school is indicated at **Figure 1**.
- 1.3 The proposals at No.69 Fitzjohn's Avenue seek to enhance the provision and facilities for the children and to improve the buildings including their architecture and features where possible. The school is proposing to improve the building and its use by extending the existing basement. The proposals involve a basement excavation of approximately 168sqm. In addition, it is proposed to create new light wells to the north and south of the building and a small light well to the front of the building. The proposals also include the replacement of the pitched roof extension to the rear with a new glazed flat roofed extension. Further details are provided in the Planning Statement and Design and Access Statement prepared by Crawford and Gray Architects that were submitted with the application.
- 1.4 The proposals in the plan submitted are not for development of extra classrooms but for improvements to buildings and thus the development will not in itself generate any significant vehicular traffic.
- 1.5 During preparation of the planning application, the architects for the scheme requested formal pre-application advice from the Local Planning Authority, London Borough of Camden, hereafter referred to as the 'council'. The pre-application reference is 2014/6727/PRE.
- 1.6 The advice issued by the council in December 2014 confirmed that "*given the size and design of the proposed ground floor and basement extension, the development may be considered acceptable*". With regards to the proposed extension works at basement level the council assessed that "*the basement extension would not be disproportionately large and its external manifestation below the existing terrace would not harm the relationship of the host property with the garden*". In terms of Amenity, the council advised that "*the proposed extension is unlikely to have any impact on the neighbouring properties in terms of loss of daylight / sunlight, overlooking or loss of privacy by virtue of its scale and siting in relation to neighbouring properties*".

1.7 Notwithstanding the above, the council requested the submission of a Transport Statement to support the planning application.

1.8 This Statement has been prepared following a site visit and a discussion with a highways officer from the council. The remainder of this Statement is set out as follows:

- Section 2 sets out the existing situation and summarises the findings of a recent school travel survey;
- Section 3 provides a summary of the accessibility of the site by a range of modes of transport;
- Section 4 sets out the development proposals;
- Section 5 sets out relevant transport policies; and
- Section 6 summarises and concludes.

2 EXISTING SITUATION

Site Location

- 2.1 The application site is located on Fitzjohn's Avenue at No.69 in a predominantly residential area in Hampstead, London Borough of Camden. As mentioned above, the school also occupies buildings on adjacent land at No.2-4 Arkwright Road, 6 Arkwright Road and the Long Hall.
- 2.2 It is noted that there are a number of educational establishments in the vicinity including St. Anthony's School and Fitzjohn's Primary School.
- 2.3 The location of the school is indicated at **Figure 1**.

Devonshire House School

- 2.4 Devonshire House School is a co-educational independent day school for children from two and a half years to eleven years for girls and thirteen years for boys.
- 2.5 The school is a member of the Independent Association of Prep Schools (IAPS).

Pupil Numbers

- 2.6 At the time of writing there are 652 pupils on roll at the school. Of these, 228 pupils are based at the application site.

Staff Numbers

- 2.7 There are a total of 126 daytime members of staff based at the school of which 79 are assigned to the site on Arkwright Road and 31 are assigned to the application site. The remaining 16 daytime staff are not assigned to a specific site and are predominantly part-time staff, e.g. maintenance staff and peripatetic (peri) teachers.

School Operating Times

- 2.8 The site is currently open between 08:00 and 18:00 Mondays to Fridays during term time. The school is generally open to students between 08:20 to 15:50 Mondays to Fridays during term time. The enrichment / extended school programmes finish around 17:30.

Access and Parking

- 2.9 The pupil and staff entrances to the application site are located along Fitzjohn's Avenue.

- 2.10 Up to twelve members of staff are permitted to park at the school. The spaces are generally assigned to those members of staff who live furthest from the school and/or car share. On the basis there are 126 daytime staff this equates to a ratio of 10.5 staff per parking space. New staff are now not offered the option to park on site, on any basis.
- 2.11 There are currently 10 cycle parking spaces in the form of cycle racks and three non-motorised scooter parking areas at the School. The scooter areas provide space for up to c.60 scooters in total to be parked with space for c.20 scooters to be stored at the application site.

Local Highway Network

- 2.12 The application site fronts onto Fitzjohn's Avenue between the junctions of Fitzjohn's Avenue and Arkwright Road and Fitzjohn's Avenue and Netherall Gardens. The junction of Fitzjohn's Avenue and Arkwright Road is signal controlled. The Netherall Gardens junction with Fitzjohn's Avenue is a priority junction.
- 2.13 Site observations indicate that the area is congested at peak times, including the adjacent signal controlled junction, though that in itself parent drop off/collection activity relating to the application site did not contribute materially to the situation.
- 2.14 The B511/Fitzjohn's Avenue is a residential street which has a single lane of traffic in either direction. It operates in a broadly north-south orientation. There are double yellow lines along the western side of the carriageway in the vicinity of the site and residents permit parking bays on the eastern side. Fitzjohn's Avenue runs between Hampstead High Street to the north and the A41 (Swiss Cottage) to the south.
- 2.15 Arkwright Road is a two-way single carriageway road which links Fitzjohn's Avenue to the A41 Finchley Road.

On-Street Parking

- 2.16 The application site is located adjacent to the boundary of Zones CA-H(b) (Hampstead: Town Centre and Vale of Heath) and CA-B (Belsize) of the local Controlled Parking Zone. The south west section of Arkwright Road lies within zone CA-H(c) (Frognaal). Restrictions apply at the following times:
- CA-H(b) - Monday to Saturday between 09:00 and 20:00 with no charge on Pay and Display after 18:00.

- CA-B – Monday to Friday between 09:00 and 18:30 and Saturday between 09:30 and 13:30.
- CA-H(c) – Monday to Saturday between 09:00 and 20:00 with no charge on Pay and Display after 18:00.

2.17 A copy of the relevant CPZ plan is included at **Appendix A**.

Existing Travel Patterns

2.18 The school operates a Travel Plan at the site. The Travel Plan was first implemented during the 2007/2008 school year. It has been developed in consultation with TfL. Travel surveys are carried out at the school on an annual basis as part of the Travel Plan process. The surveys record the main mode of transport for core teaching staff and pupils travelling to and from the school. The results are uploaded online to TfL's STARS (Sustainable Travel: Active, Responsible, Safe) website.

2.19 In order to provide an indication of how staff and pupils currently travel to the school, the results of the most recent travel surveys (carried out 19th May 2015) have been analysed. The results of the surveys are summarised in Table 2.1 and Table 2.2 below for staff and pupils respectively.

Table 2.1: Staff Travel Patterns (May 2015)		
Mode of Transport	Count	Percentage
Car Share (with child/children)	2	2.0%
Car	6	6.0%
Park and Stride	3	3.0%
Cycle	5	5.0%
Dedicated School Bus	0	0.0%
Rail / Underground	64	64.0%
Public Service Bus	12	12.0%
Walk	8	8.0%
Buggy	0	0.0%
Scooter	0	0.0%
River	0	0.0%
Total	100	100%

2.20 This indicates that 6% of core teaching staff travel to work by car on a regular basis, with the significant majority travelling by sustainable modes of transport including rail and bus.

Table 2.2: Pupil Travel Patterns (May 2015)		
Mode of Transport	Count	Percentage
Car Share (with child/children)	30	4.6%
Car	135	20.7%
Park and Stride	36	5.5%
Cycle	10	1.5%
Dedicated School Bus	20	3.1%
Rail / Underground	74	11.4%
Public Service Bus	48	7.4%
Walk	242	37.1%
Buggy	8	1.2%
Scooter	49	7.5%
River	0	0.0%
Total	652	100%

2.21 The survey indicates that of the 652 pupils that attend the school, 135 (c.21%) currently travel to and from the school by car. A higher proportion of pupils walk or are transported by buggy (c.38%). Overall, a significant proportion of pupils (c.80%) travel by sustainable modes of transport.

3 ACCESSING THE SITE BY NON-CAR MODES

Walking

- 3.1 The application site is located within a residential area and as such benefits from pedestrian links between the site entrance and the local residential catchment.
- 3.2 Golders Green to the north, Gospel Oak to the east, St John's Wood to the south and Kilburn to the west are within a 2km catchment of the site. The surrounding residential roads are provided with footways and street lighting and crossing facilities are provided at key locations thereby encouraging trips to be made on foot.
- 3.3 A range of shops, businesses and services are also located in the surrounding area.
- 3.4 In addition to this the site is located within walking distance of Hampstead Station for London Underground services, Finchley Road & Fognal Station for overground rail services and bus stops on Fitzjohn's Avenue. Further details regarding access to the site by rail and bus are provided later in this report.

Cycling

- 3.5 The Chartered Institution of Highways and Transportation (CIHT) document, 'Cycle Friendly Infrastructure' guidelines, highlights previous research by the Department for Transport (DfT) that indicates that three quarters of all journeys are less than 5 miles (8 kilometres) of which 60% are by car. The guidelines highlight that there is a "*substantial potential for substituting cycling for driving*" for distances up to 5 miles. A large area of north London is within five miles of the site. Areas within a 5 mile catchment include Hampstead Heath, Golders Hill Park, The Royal Parks and Camden. As such, there is scope for this mode of transport to be taken up particularly by staff or visitors to the site.
- 3.6 Fitzjohn's Avenue is identified by TfL as a "*route signed for use by cyclists on a mixture of quiet and busier roads*". In addition, 'greenway' cycle routes are present within nearby Hampstead Heath which connect to the wider cycle network in London.

Transport 4 Schools

- 3.7 Transport 4 Schools currently run a number of bus services that pass the site. According to the Transport 4 Schools website the following routes serve the site:

- Route A2: Islington (N1 – N5 – N7 – NW1)

- Route B2 (1): Muswell Hill – Crouch End – Highgate
- Route BC-2
- Route C2 (1): Mill Hill – Finchley Central – Hampstead Garden Suburb (NW7 – N3 – N2 – NW11 – NW3)
- Route C2 (2): Mill Hill – Finchley Central – Hampstead Garden Suburb (NW7 – N3 – N2 – NW11 – NW3)
- Route D2 (2): West Hampstead (NW6 – NW2 – NW10)
- Route E1: Maida Vale – St. John’s Wood – Hampstead (W2 – W9 – NW8 – NW3)
- Route E2: Maida Vale – St John’s Wood (w14 – W10 – W11 – W8 – W2 – W9 – NW8 – NW6)
- Route F2 (2): Regents Park (W2 – W1 – NW1 – NW8)

3.8 It should be noted that Transport 4 Schools is an independent organisation and the use of its services is arranged by parents. According to the website, the above bus routes and stops are subject to alterations depending on demand.

Public Transport

Bus Routes

3.9 The nearest bus stops to the site are situated on Fitzjohn’s Avenue. The nearest stop is c.30m of the site access on Fitzjohn’s Avenue south of the main entrance to the site. The bus routes that serve the stops on Fitzjohn’s Avenue are the 46 and 603.

3.10 An additional bus service, the 268, stops in the vicinity of Hampstead Station.

3.11 In addition to the services mentioned above, the Travel Plan survey revealed that pupils and staff also use the 13, 82 and 113 bus services to travel to and from the school. The TfL bus map is provided at **Appendix B**.

3.12 Table 3.1 below provides a summary of the bus services referred to above.

Table 3.1: Bus Services Accessible from the Site		
Service No	Destination	Weekday Frequency (every 'x' minutes)
13	Golders Green Station to Aldwych	5-8
46	St Bartholomew's Hospital to Westbourne Street	10-12
82	North Finchley Bus Station to Victoria Bus Station	5-9
113	Edgware to Marble Arch	7-11
268	O2 Centre/Sainsbury's to Golders Green Station	9-13
603	Swiss Cottage to Muswell Hill	2 per day

London Underground Services

- 3.13 Hampstead Station is the nearest London Underground station to the application site. The station is located approximately 500m (walking distance) from the site. The Northern Line, which provides frequent services between Edgware and Morden via Charing Cross or Bank, is accessed via Hampstead Station.

London Overground Services

- 3.14 The nearest overground station is Finchley Road and Frognal Station which is situated approximately 760m (walking distance) to the south west of the application site. Rail services to and from Stratford, Richmond and Clapham Junction are accessed from this station.

Public Transport Accessibility Level (PTAL)

- 3.15 Public Transport Accessibility Levels (PTALs) are a theoretical measure of the accessibility of a given point to the public transport network, taking into account walk access time and service availability. The method is essentially a way of measuring the density of the public transport network at a particular point.
- 3.16 Walk times are calculated from the specified point of interest to all public transport access points: bus stops, light rail stations, underground stations and Tramlink halts, within pre-defined catchments. The PTAL then incorporates a measure of service frequency by

calculating an average waiting time based on the frequency of services at each public transport access point.

3.17 A reliability factor is added and the total access time is calculated. A measure known as an Equivalent Doorstep Frequency (EDF) is then derived for each point. These are summed for all routes within the catchment and the PTALs for the different modes (bus, rail, etc.) are then added to give a single value. The PTAL is categorised in six levels, 1 to 6 where 6 represents a high level of accessibility and 1 a low level of accessibility.

3.18 The measure, therefore, reflects:

- Walking time from the point of interest to the public transport access points;
- The reliability of the service modes available;
- The number of services available within the catchment; and
- The level of service at the public transport access points – i.e. average waiting time.

3.19 The application site has a PTAL rating of 5, measured from the centre of the site in accordance with best practice, which indicates a very good level of accessibility to public transport. **Appendix C** contains the TfL PTAL summary report for the site.

4 DEVELOPMENT PROPOSALS

- 4.1 The proposals at No.69 Fitzjohn's Avenue aim to improve the existing school facilities, improve the connectivity and circulation with the basement level and the rear garden, enhance the character of the building and improve the energy performance of the building.
- 4.2 The proposals in the plan submitted are not for development of extra classrooms but for improvements to buildings and thus the development will not in itself generate any significant vehicular traffic.
- 4.3 The Planning Statement that accompanies the planning application describes the development proposals as follows:
- Extension of the existing basement under the existing raised terrace and to the south of the existing toilets (involving basement excavation of approximately 168sqm).
 - Creating a new light well to the south of the building measuring approximately 6.9m by 1.83m (1.26m in front of the proposed bay window). The light well would join to an existing light well on the southern extension.
 - Creating a new light well to the north of the building measuring approximately 3.9m by 3.2m and small new light well (3.4m by 1m) to front of the building covered by a grille at floor level.
 - The replacement of the non-original full width pitched roof rear extensions with a new glazed flat roofed extension. The existing extension projects approximately 2.22m from the rear elevation with a staff room projecting 6.07m from the rear elevation. The proposed replacement extension would project 3.9m from the existing rear elevation to 5.83m to incorporate a staff room.
- 4.4 Further details can be found in the Design and Access Statement and Planning Statement that support the planning application.
- 4.5 The existing and proposed layout plans are presented at **Appendix D**.
- 4.6 The additional site layout plan at **Appendix E** demonstrates that the proposals (including light wells) do not encroach onto the public highway.

Trip Generation

- 4.7 As highlighted above, the proposals are not for development of extra classrooms but for improvements to buildings. A replacement teaching room will be created at basement level with an existing teaching room on the top floor level converted to a learning support room. A dedicated dining room will also be provided replacing an existing facility which is used as a combined dining room, teaching room and play area, which is far from ideal.
- 4.8 Therefore, the development will not in itself generate any significant vehicular traffic.

Servicing

- 4.9 The proposals will not result in any increase in the number of deliveries being made to the site.

Travel Plan

- 4.10 The school currently operates a detailed Travel Plan that includes a significant number of sustainable transport initiatives that have been developed in consultation with TfL through the TfL STARS School Travel Plan Scheme of which Devonshire House School is an accredited member.
- 4.11 A copy of the latest published Travel Plan (for the 2013/2014 school year) is presented at **Appendix F**. This provides details relating to the initiatives that have been delivered during the 2013/2014 school year and that are planned for the 2014/2015 school year.
- 4.12 Of particular note, the school has developed an Eco Club which is a teacher led forum that involves pupils from each upper school year group to discuss and implement green and sustainable initiatives in every area of school life including travel. The school has recently been awarded an Eco School Silver Award which demonstrates its willingness to promote safe and more sustainable and active travel behaviour.
- 4.13 The school remains committed to delivering any further sustainable transport initiatives that are developed via the Travel Plan programme such as increasing the number of cycle parking spaces if demand for cycle parking increases. These initiatives will continue to aim to improve the travel behaviour of the school's staff and pupils where possible.
- 4.14 By way of example, the school has recently launched a new Faxi group. Faxi is an internet service designed to create an online community around schools to assist with the school run. The service will allow parents at the school to identify, communicate and build relationships

with other parents with similar journeys. The aim is to reduce carbon emissions, ease local congestion and improve road safety.

5 POLICY

5.1 This section summarises the relevant transport policies at national, regional and local level and these are considered in the context of the development of the site and how it complies with those policies.

National Planning Policy Framework (March 2012)

5.2 Paragraph 32 sets out that:

"All developments that generate significant amounts of movement should be supported by a Transport Statement or Transport Assessment. Plans and decisions should take account of whether:

- the opportunities for sustainable transport modes have been taken up depending on the nature and location of the site, to reduce the need for major transport infrastructure;*
- safe and suitable access to the site can be achieved for all people; and*
- improvements can be undertaken within the transport network that cost effectively limit the significant impacts of the development. Development should only be prevented or refused on transport grounds where the residual cumulative impacts of development are severe."*

5.3 The School has a localised catchment area and has good pedestrian and cyclist connections as well as public transport opportunities which are considered to encourage sustainable patterns of travel to the site.

Regional Guidance

The London Plan

5.4 The London Plan is a Spatial Development Strategy which sets out the framework for the development of London over the next 20-25 years. The Mayor published the Further Alterations to the London Plan (FALP). The FALP are operative as formal alterations to the London Plan and form part of the development plan for London. The transport aspects of the London Plan, relevant to the proposed development, are discussed in the following paragraphs.

5.5 Paragraph 1.53 sets out the Mayor's objectives and vision, with point 6 stating the following with regards to transport:

"A city where it is easy, safe and convenient for everyone to access jobs, opportunities and facilities with an efficient and effective transport system which actively encourages more walking and cycling, makes better use of the Thames and supports delivery of all the objectives of this Plan."

5.6 Policy 6.1 of Chapter 6 (Transport) sets out a number of aims, with those relevant to the proposals as follows:

- a) "encouraging patterns and nodes of development that reduce the need to travel, especially by car;*
- b) seeking to improve the capacity and accessibility of public transport, walking and cycling, particularly in areas of greatest demand;*
- c) supporting development that generates high levels of trips only at locations with high levels of public transport accessibility, either currently or via committed, funded improvements including provided by developers through the use of planning obligations;*
- d) supporting measures that encourage shifts to more sustainable modes and appropriate demand management; and*
- i) promoting walking by ensuring an improved urban realm."*

5.7 With regards to cycle parking provisions, the Travel Plan will continue to monitor the demand for cycle parking and will improve facilities including increasing the number of spaces if necessary.

Local Guidance

London Borough of Camden's Core Strategy (2010-2025) and Local Development Framework

5.8 The Core Strategy, adopted in November 2010, sets out the council's long term vision and policies between 2010 and 2025 and forms a central part of the Local Development Framework (LDF).

5.9 With regards to transport, Policy CS11 "Promoting Sustainable and Efficient Travel" states the following:

"The Council will promote the delivery of transport infrastructure and the availability of sustainable transport choices in order to support Camden's growth, reduce the environmental impact of travel, and relieve pressure on the borough's transport network."

5.10 Under "Promoting Sustainable Travel", Policy CS11 states:

"In order to support Camden's growth and to promote walking, cycling and public transport, the council will:

- improve public spaces and pedestrian links across the borough, including by focusing public realm investment in Camden's town centres and the Central London area, and extending the 'Legible London' scheme;*
- continue to improve facilities for cyclists, including increasing the availability of cycle parking, helping to deliver the London Cycle Hire Scheme, and enhancing cycle links; and;*
- improve the bus network and deliver related infrastructure, and support proposals to improve services and capacity on the tube, London Overground and Thameslink."*

5.11 Policy CS11 goes onto state:

"As part of its approach to minimising congestion and addressing the environmental impacts of travel, the council will:

- expand the availability of car clubs and pool cars as an alternative to the private car;*
- minimise provision for private parking in new developments, in particular through
 - Car free developments in the borough's most accessible locations and*
 - Car capped developments;**
- restrict new public parking and promote the re-use of existing car parks, where appropriate;*
- promote the use of low emission vehicles, including through the provision of electric charging points; and*
- ensure that growth and development has regard to Camden's road hierarchy and does not cause harm to the management of the road network."*

- 5.12 The council's LDF contains a number of documents which aim to achieve the vision and objectives set out in the Core Strategy. Development Policies support the Core Strategy by *"setting out additional planning policies that the council will use when making decisions on applications for planning permission"*.
- 5.13 Policy DP16 seeks to help deliver the Core Strategy by ensuring that the transport implications of development are managed. It states:
"The council will seek to ensure that development is properly integrated with the transport network and is supported by adequate walking, cycling and public transport links."
- 5.14 The policy states the council *"will resist development that fails to assess and address any need for"*:
- *"movements to, from and within the site, including links to existing transport networks..."*
 - *additional transport capacity off-site (such as improved infrastructure and services) where existing or committed capacity cannot meet the additional need generated by the development. Where appropriate, the council will expect proposals to provide information to indicate the likely impacts of the development and the steps that will be taken to mitigate those impacts, for example using transport assessments and travel plans;*
 - *Safe pick-up, drop-off and waiting areas for taxis, private cars and coaches, where this activity is likely to be associated with the development."*
- 5.15 Policy DP17 sets out the council's requirements for new development in terms of provision for walking, cycling and public transport in conjunction with CS11 and policies DP16 and DP18 – DP21. DP17 states:
"The council will promote walking, cycling and public transport use. Development should make suitable provision for pedestrians, cyclists and public transport and, where appropriate, will also be required to provide for interchanging between different modes of transport."
- 5.16 DP18 sets out the council's approach to parking in new development. It states:
"The council will seek to ensure that developments provide the minimum necessary car parking provision. The council will expect development to be car free in the Central London Area, the town centres of Camden Town, Finchley Road / Swiss Cottage, Kentish Town, Kilburn High Road and West Hampstead, and other areas within Controlled Parking Zones that are easily accessible by public transport."

6 SUMMARY AND CONCLUSION

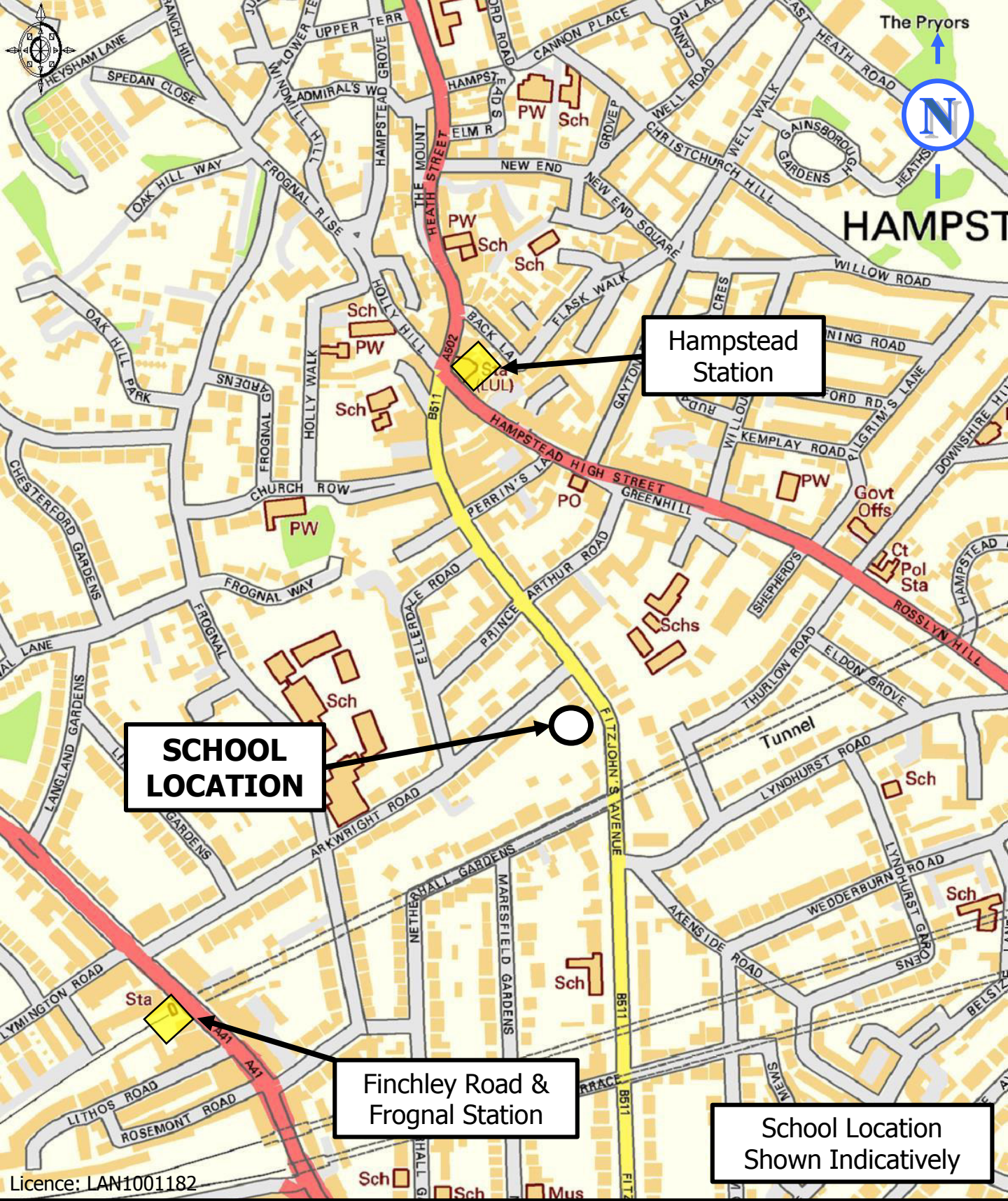
Summary

- 6.1 TTP Consulting is retained to provide transport advice in relation to the proposed extension and alteration works to Devonshire House School at No.69 Fitzjohn's Avenue in the London Borough of Camden (planning reference 2015/1635/P).
- 6.2 Devonshire House School is a co-educational independent day school for children from two and a half years to eleven years for girls and thirteen years for boys. At the time of writing there are 652 pupils on roll at the school. Of these, 228 pupils are based at the application site. There are a total of 126 daytime members of staff based at the school of which 79 are assigned to the site on Arkwright Road and 31 are assigned to the application site. The remaining 16 daytime staff are not assigned to a specific site and are predominantly part-time staff, e.g. maintenance staff and peripatetic (peri) teachers.
- 6.3 Based on the results of the travel survey carried out earlier this year (summarised earlier in this report), it is estimated that of the pupils and core teaching staff that are based at the application site in the region of 47 pupils (20.7% of 228) and around 2 core teaching staff (6.0% of 31) travel to the school by car. The total number of car users at the application site is therefore estimated to be around 49 which is approximately 6.5% of the total number of pupils and core teaching staff based at the school (762).
- 6.4 The proposals aim to improve the existing school facilities, improve the connectivity and circulation with the basement level and the rear garden, enhance the character of the building and improve the energy performance of the building.
- 6.5 The proposals in the plan submitted are not for development of extra classrooms but for improvements to buildings and thus the development will not in itself generate any significant vehicular traffic.
- 6.6 Given the above, the proposals will not result in any change to the trip generating characteristics of the site and as a consequence the effect of the proposals on the local transport network will be negligible.
- 6.7 The proposals will not result in any increase in the number of deliveries being made to the site.

- 6.8 The school currently operates a detailed Travel Plan that includes a significant number of sustainable transport initiatives that have been developed in consultation with TfL through the TfL STARS School Travel Plan Scheme of which Devonshire House School is an accredited member. The school remains committed to delivering any further sustainable transport initiatives that are developed via the Travel Plan programme. These initiatives will continue to aim to improve the travel behaviour of the school's staff and pupils where possible.
- 6.9 A review of the relevant transport policies at national, regional and local level in the context of the development proposals has been undertaken and it is considered that the proposals are consistent with national and local transport policy guidance.

Conclusion

- 6.10 It is therefore concluded that the planning application proposal is acceptable in traffic and transport terms.



Licence: LAN1001182

TITLE:
School Location Plan

PROJECT:
Devonshire House School, 69 Fitzjohn's Avenue

CLIENT:
Devonshire House School



ttp consulting
 transport planning specialists
 111-113 Great Portland Street
 London W1W 6QQ
 Tel: 020 7100 0753
 www.ttp-consulting.co.uk
 Registered in England: 7441800

DRAWN: D.R CHECKED: N.B DATE: 11.06.15 SCALE: N.T.S.

DRAWING REFERENCE: **Figure 1** REVISION: .

APPENDIX A

CPZ Plan

Controlled Parking Zones in Camden

Times shown are correct at time of publication (April 2010). Please check controlled times on-street when you park. You can park in any sub-area or 'buffer zone' with the main letter of your permit. For example, with a Swiss Cottage permit, CA-R, you can park in either sub-areas, CA-R(a) and CA-R(b), or any of the buffer zones with this letter - e.g. CA-R/Q, CA-Q/R, CA-R/K/Q. The zone times of the buffer zones follow the first letter - e.g. CA-D/E follows CA-D zone times, rather than those of CA-E.



This drawing is based upon the 1:1250 Ordnance Survey Digital Mapping with permission of the controller of Her Majesty's Stationery Office. Crown Copyright 2010. Licence No. LA086339, and mapping information from the Geographers' A-Z Company Ltd licence No. 134 to the London Borough of Camden. Unauthorised reproduction infringes Crown Copyright and may lead to prosecution or civil proceedings.

CA-B Belsize
 Mon-Fri 09:00-18:30
 Sat 09:30-13:30

CA-C Holborn & Covent Garden
 Residents Bays are controlled 24 hrs a day, 7 days a week. Parking controls on single yellow lines/Pay & Display bays are Mon-Sat 8:30-18:30

CA-D Kings Cross Area
 Mon-Fri 08:30-18:30
 Sat 08:30-13:30

CA-E Bloomsbury & Fitzrovia
 Mon-Sat 08:30-18:30

CA-F(n) Camden Town: North
 Mon-Fri 08:30-18:30
 Sat & Sun 09:30-17:30

CA-F(nw) Camden Town: North West
 Mon-Fri 08:30-23:00
 Sat & Sun 09:30-23:00

CA-F(s) Camden Town: South
 Mon-Fri 08:30-18:30
 Sat 09:30-17:30
 Sun (resident bays only) 9:30-17:30

CA-G Somers Town
 Mon-Fri 08:30-18:30

CA-G Crown Estate
 Every day 00:00-23:59
 Private Parking Only

CA-H(a) Hampstead: South Hill Park
 Mon-Sat 09:00-18:00

CA-H(b) Hampstead: Town Centre & Vale of Heath
 Mon-Sat 09:00-20:00
 No charge on Pay & Display after 18.00

CA-H(c) Frognal
 Mon-Sat 09:00-19:00
 No charge on Pay & Display after 18.00

CA-H(d) Hampstead: Church Row
 Mon-Sat 09:00-22:00
 No charge on Pay & Display after 18.00

CA-H/B
 Mon-Sat 09:00-20:00

CA-J Primrose Hill
 Mon-Fri 08:30-18:00

CA-K Kilburn Priory
 Mon-Fri 08:30-18:30

CA-L West Kentish Town: Inner
 Mon-Fri 09:00-11:00

CA-L West Kentish Town: Outer
 Mon-Fri 08:30-18:30
 Mon-Fri 08:30-18:30
 Sat & Sun 09:30-17:30

CA-M East Kentish Town
 Mon-Fri 08:30-18:30

CA-N Camden Square
 Mon-Fri 08:30-18:30

CA-P(a) Fortune Green: Central
 Mon-Fri 08:30-18:30

CA-P(b) Fortune Green: East
 Mon-Sat 08:30-18:30

CA-P(c) Fortune Green: West
 Mon-Fri 10:00-12:00

CA-Q Kilburn
 Mon-Fri 08:30-18:30

CA-R(a) Swiss Cottage: West End Lane
 Mon-Fri 08:30-18:30

CA-R(b) Swiss Cottage: Finchley Road
 Mon-Sat 08:30-22:00

CA-S(a) Redington & Frognal: North
 Mon-Fri 12:30-14:30

CA-S(b) Redington & Frognal: South
 Mon-Sat 09:00-18:00

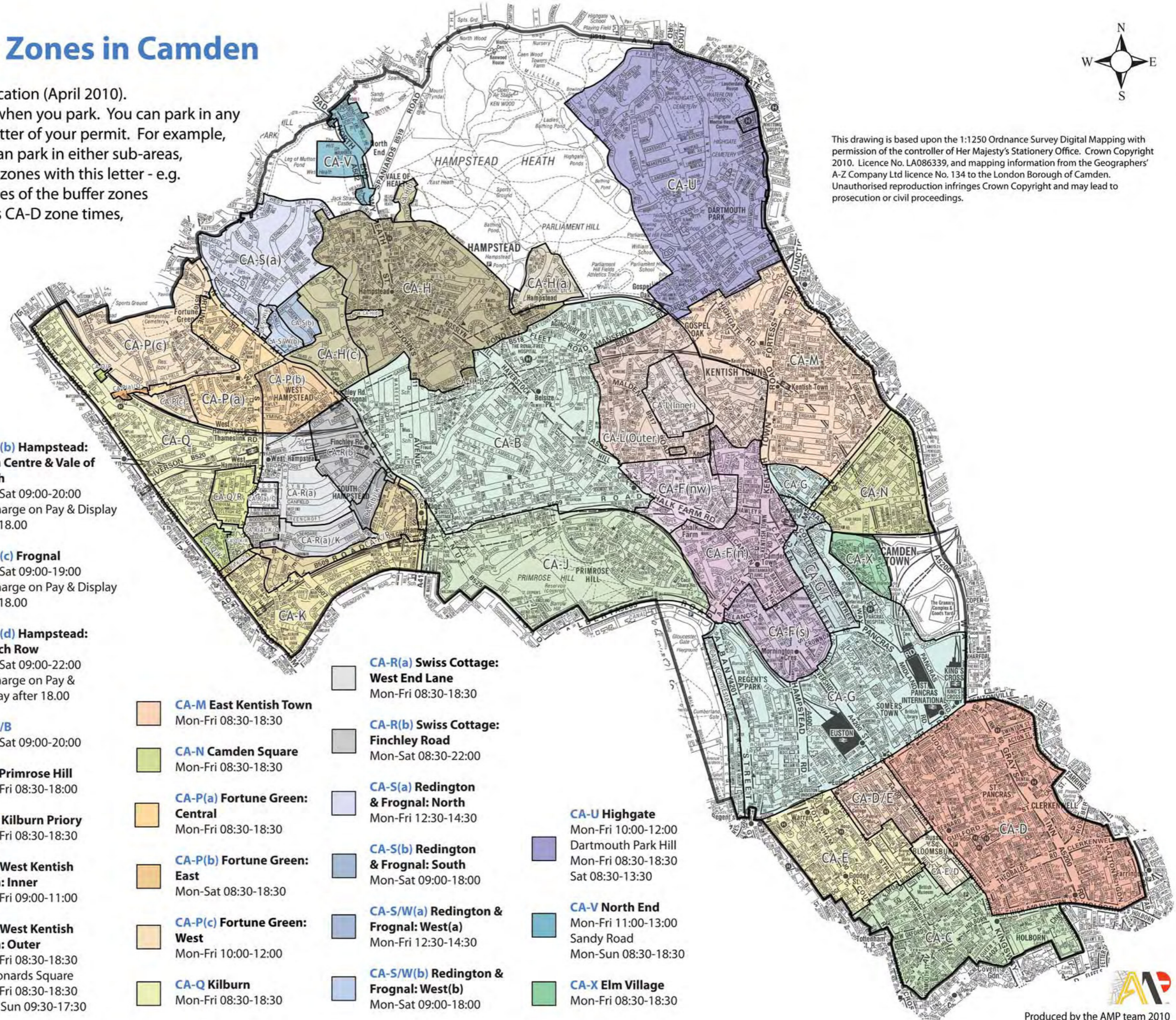
CA-S/W(a) Redington & Frognal: West(a)
 Mon-Fri 12:30-14:30

CA-S/W(b) Redington & Frognal: West(b)
 Mon-Sat 09:00-18:00

CA-U Highgate
 Dartmouth Park Hill
 Mon-Fri 10:00-12:00
 Mon-Fri 08:30-18:30
 Sat 08:30-13:30

CA-V North End
 Sandy Road
 Mon-Sun 08:30-18:30

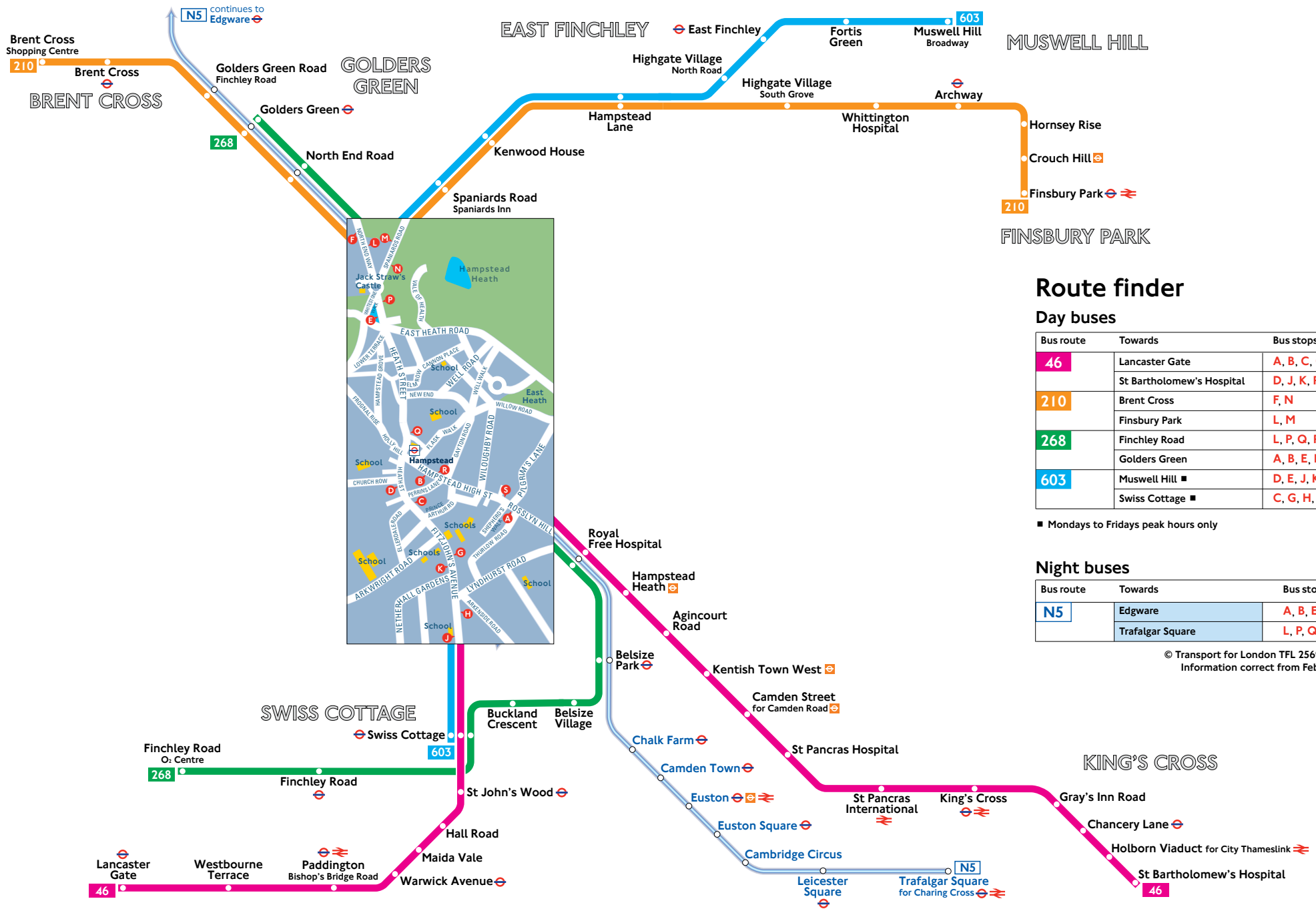
CA-X Elm Village
 Mon-Fri 08:30-18:30



APPENDIX B

TfL Bus Map

Buses from Hampstead



Route finder

Day buses

Bus route	Towards	Bus stops
46	Lancaster Gate	A, B, C, G, H
	St Bartholomew's Hospital	D, J, K, R, S
210	Brent Cross	F, N
	Finsbury Park	L, M
268	Finchley Road	L, P, Q, R, S
	Golders Green	A, B, E, F
603	Muswell Hill ■	D, E, J, K, M
	Swiss Cottage ■	C, G, H, N, P, Q

■ Mondays to Fridays peak hours only

Night buses

Bus route	Towards	Bus stops
N5	Edgware	A, B, E, F
	Trafalgar Square	L, P, Q, R, S

© Transport for London TFL 25695.02.13 (T)
Information correct from February 2013

APPENDIX C

TfL PTAL Summary

PTAI Study Report File Summary

PTAI Run Parameters

PTAI Run 20151106205725
Description 20151106205725
Run by user PTAL web application
Date and time 11/06/2015 20:57

Walk File Parameters

Walk File PLSQLTest
Day of Week M-F
Time Period AM Peak
Walk Speed 4.8 kph
BUS Walk Access Time (mins) 8
BUS Reliability Factor 2.0
LU LRT Walk Access Time (mins) 12
LU LRT Reliability Factor 0.75
NATIONAL_RAIL Walk Access Time (mins) 12
NATIONAL_RAIL Reliability Factor 0.75

Coordinates: 526520, 185344

Mode	Stop	Route	Distance (metres)	Frequency (vph)	Weight	Walk time (mins)	SWT (mins)	TAT (mins)	EDF	AI
BUS	FITZJOHN'S A SPRING PATH	46	30.44	6.0	1.0	0.38	7.0	7.38	4.06	4.06

BUS	HAMPSTEAD STATION	268	470.14	5.0	0.5	5.88	8.0	13.88	2.16	1.08
LU LRT	Finchley Road	Metropolitan Line Aldgate to Wembley Park	910.75	1.0	0.5	11.38	30.75	42.13	0.71	0.36
LU LRT	Finchley Road	Metropolitan Line Aldgate to Harrow-on-the-Hill	910.75	2.3	0.5	11.38	13.79	25.18	1.19	0.6
LU LRT	Finchley Road	Jubilee Line Stratford to Stanmore	910.75	17.8	0.5	11.38	2.44	13.82	2.17	1.09
LU LRT	Finchley Road	Jubilee Line Wembley Park to Stratford	910.75	4.4	0.5	11.38	7.57	18.95	1.58	0.79
LU LRT	Finchley Road	Metropolitan Line Amersham to Aldgate	910.75	3.0	0.5	11.38	10.75	22.13	1.36	0.68
LU LRT	Finchley Road	Metropolitan Line Watford to Baker Street	910.75	3.0	0.5	11.38	10.75	22.13	1.36	0.68
LU LRT	Finchley Road	Metropolitan Line Rickmansworth to Baker Street	910.75	0.3	0.5	11.38	100.75	112.13	0.27	0.13
LU LRT	Finchley Road	Metropolitan Line Uxbridge to Aldgate	910.75	6.3	0.5	11.38	5.51	16.9	1.78	0.89
LU LRT	Finchley Road	Metropolitan Line Watford to Aldgate	910.75	2.3	0.5	11.38	13.79	25.18	1.19	0.6
LU LRT	Finchley Road	Metropolitan Line Aldgate to Watford	910.75	4.0	0.5	11.38	8.25	19.63	1.53	0.76
LU LRT	Finchley Road	Metropolitan Line Baker Street to Amersham	910.75	2.3	0.5	11.38	13.79	25.18	1.19	0.6
LU LRT	Finchley Road	Metropolitan Line Baker Street to Uxbridge	910.75	0.3	0.5	11.38	100.75	112.13	0.27	0.13

LU LRT	Finchley Road	Metropolitan Line Uxbridge to Baker Street	910.75	3.0	0.5	11.38	10.75	22.13	1.36	0.68
LU LRT	Finchley Road	Metropolitan Line Chesham to Aldgate	910.75	0.7	0.5	11.38	43.61	54.99	0.55	0.27
LU LRT	Finchley Road	Metropolitan Line Baker Street to Watford	910.75	1.7	0.5	11.38	18.4	29.78	1.01	0.5
LU LRT	Finchley Road	Metropolitan Line Hillingdon to Baker Street	910.75	0.3	0.5	11.38	100.75	112.13	0.27	0.13
LU LRT	Finchley Road	Jubilee Line Willesden Green to Stratford	910.75	4.4	0.5	11.38	7.57	18.95	1.58	0.79
LU LRT	Finchley Road	Metropolitan Line Croxley to Aldgate	910.75	0.3	0.5	11.38	100.75	112.13	0.27	0.13
LU LRT	Finchley Road	Metropolitan Line Baker Street to Wembley Park	910.75	0.3	0.5	11.38	100.75	112.13	0.27	0.13
LU LRT	Finchley Road	Metropolitan Line Baker Street to Harrow-on-the-Hill	910.75	0.3	0.5	11.38	100.75	112.13	0.27	0.13
LU LRT	Hampstead	Northern Line Edgware to Morden	497.76	9.7	1.0	6.22	3.84	10.06	2.98	2.98
LU LRT	Hampstead	Northern Line Edgware to Morden	497.76	8.3	0.5	6.22	4.36	10.59	2.83	1.42
LU LRT	Hampstead	Northern Line Kennington to Edgware	497.76	5.0	0.5	6.22	6.75	12.97	2.31	1.16
NATIONAL_RAIL	FINCHLEY ROAD AND FROGNAL	CLAPHAM JUNCTION to STRATFORD	762.55	2.0	0.5	9.53	15.75	25.28	1.19	0.59
NATIONAL_RAIL	FINCHLEY ROAD AND FROGNAL	RICHMOND to STRATFORD	762.55	4.0	1.0	9.53	8.25	17.78	1.69	1.69

Total AI for this POI is 23.05.

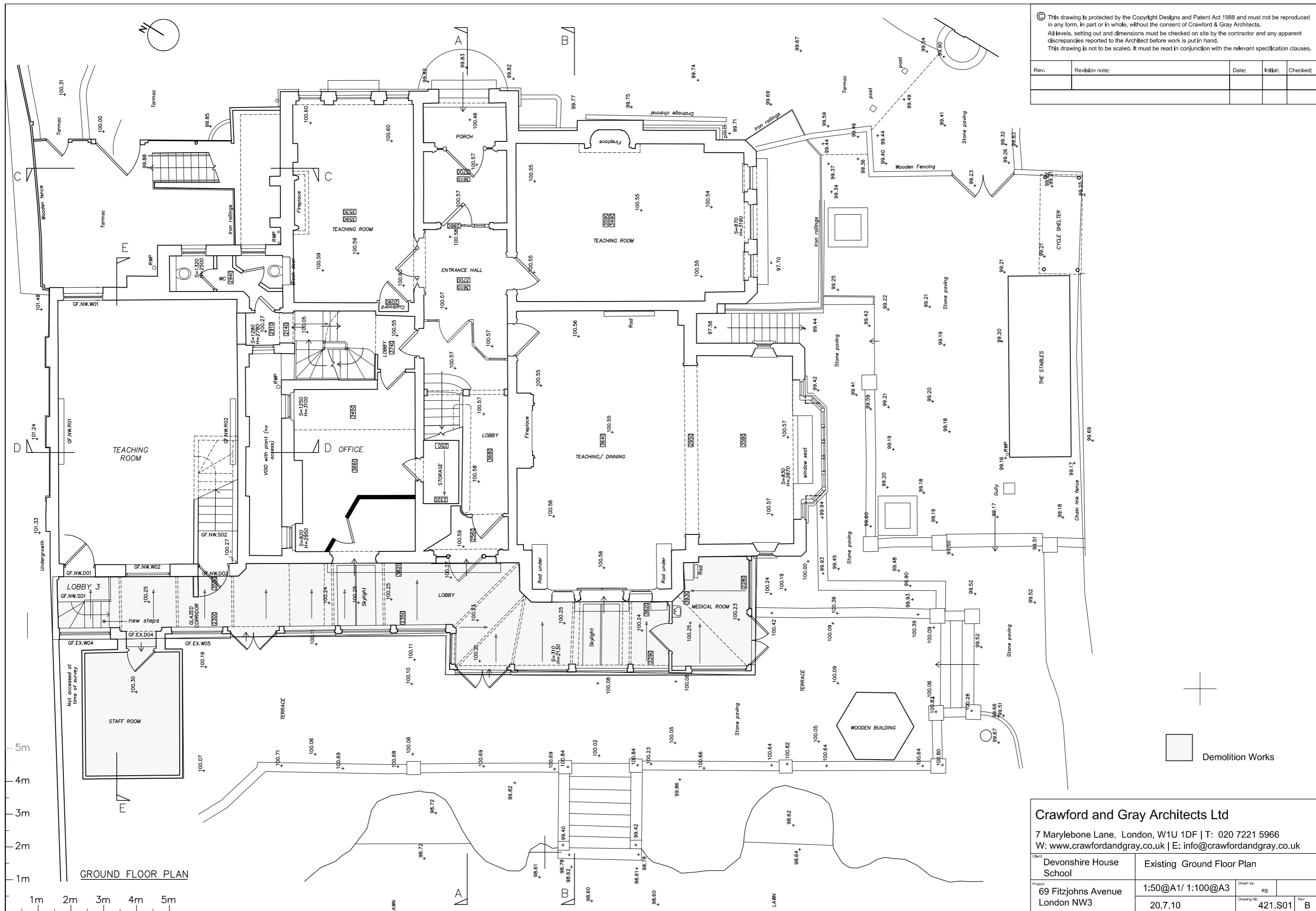
PTAL Rating is 5.

APPENDIX D

Existing and Proposed Layout Plans

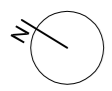
© This drawing is protected by the Copyright Designs and Patent Act 1988 and must not be reproduced in any form, in part or in whole, without the consent of Crawford & Gray Architects.
 All levels, setting out and dimensions must be checked on site by the contractor and any apparent discrepancies reported to the Architect before work is put in hand.
 This drawing is not to be scaled. It must be read in conjunction with the relevant specification clauses.

Rev:	Revision note:	Date:	Initial:	Checked:



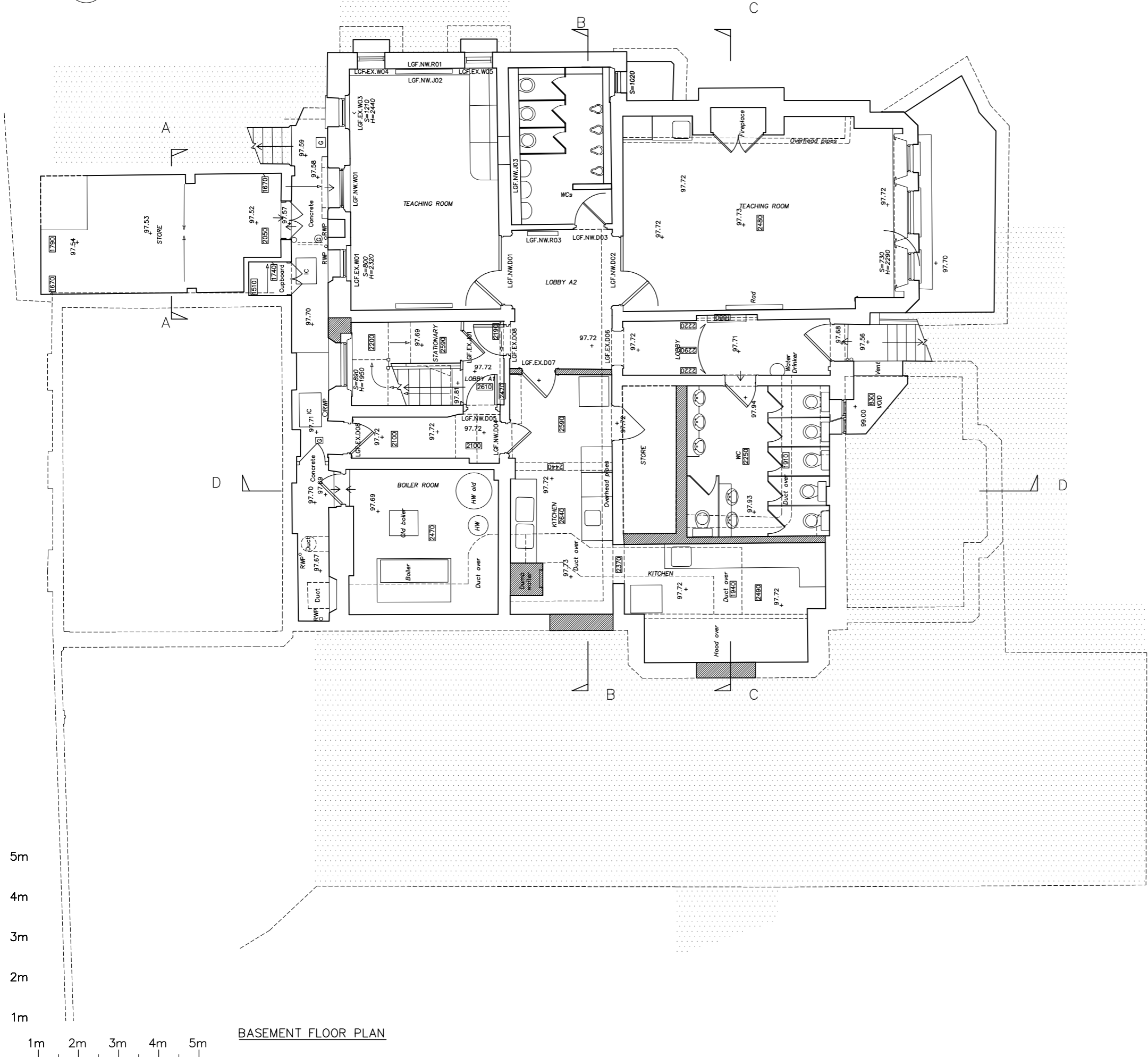
Crawford and Gray Architects Ltd
 7 Marylebone Lane, London, W1U 1DF | T: 020 7221 5966
 W: www.crawfordandgray.co.uk | E: info@crawfordandgray.co.uk

Client:	Devonshire House School	Existing Ground Floor Plan	
Project:	69 Fitzjohns Avenue London NW3	1:50@A1/ 1:100@A3	20.7.10
Drawn by:	eg		
Drawing No:	421.S01		
Rev:	B		

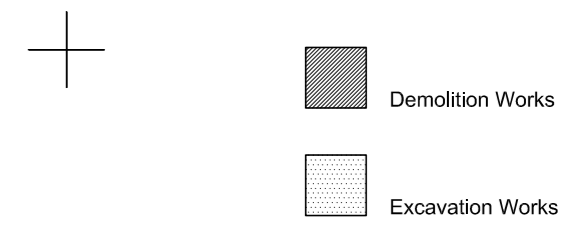


© This drawing is protected by the Copyright Designs and Patent Act 1988 and must not be reproduced in any form, in part or in whole, without the consent of Crawford & Gray Architects.
 All levels, setting out and dimensions must be checked on site by the contractor and any apparent discrepancies reported to the Architect before work is put in hand.
 This drawing is not to be scaled. It must be read in conjunction with the relevant specification clauses.

Rev:	Revision note:	Date:	Initial:	Checked:

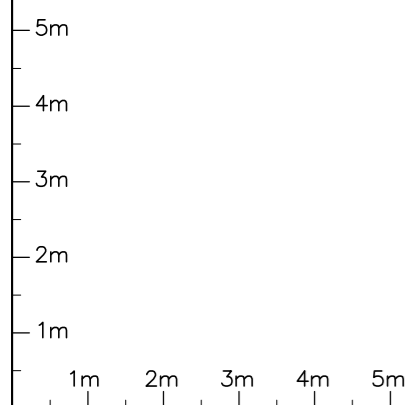
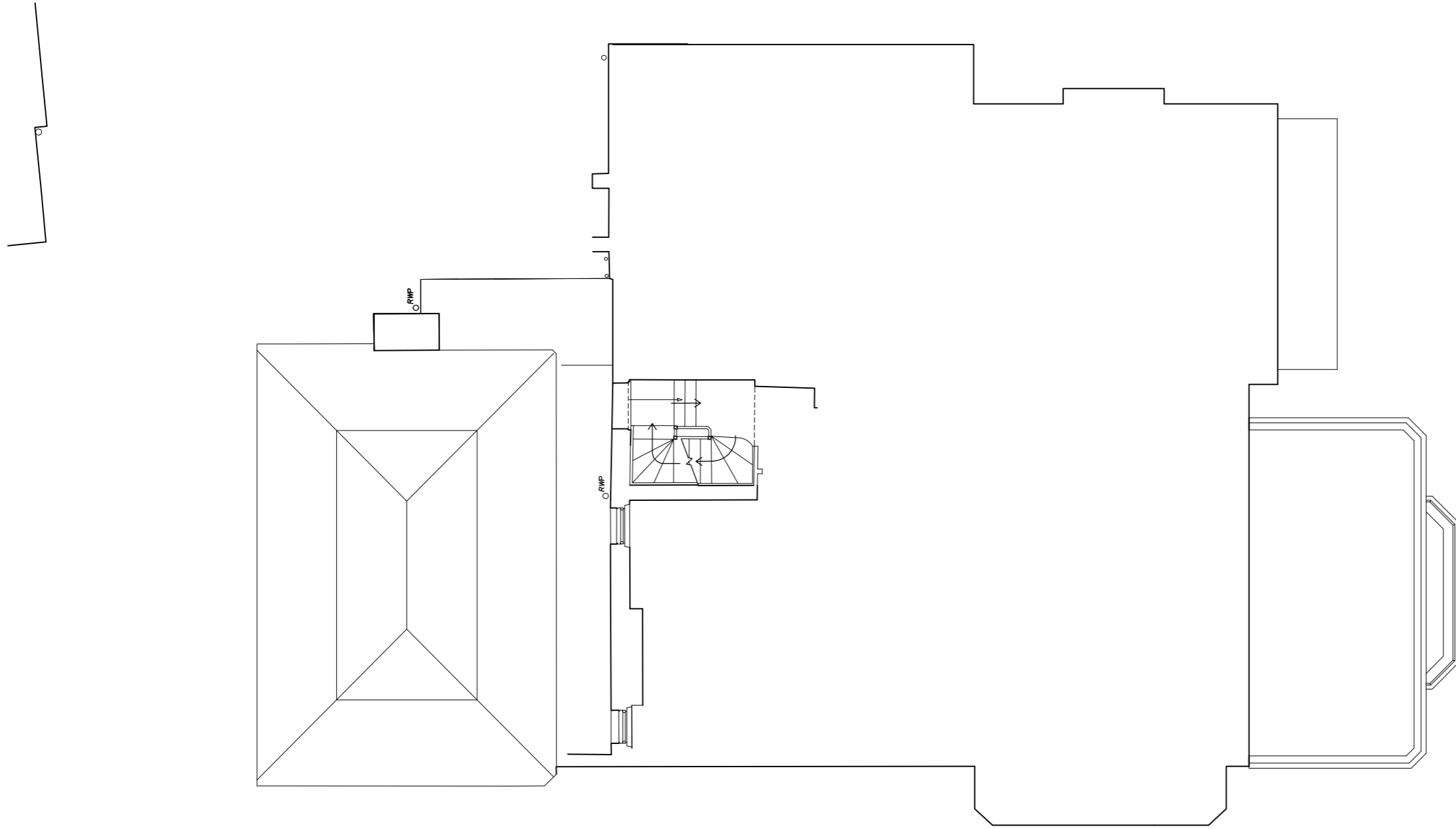
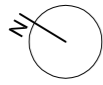


BASEMENT FLOOR PLAN



Crawford and Gray Architects Ltd
 7 Marylebone Lane, London, W1U 1DF | T: 020 7221 5966
 W: www.crawfordandgray.co.uk | E: info@crawfordandgray.co.uk

Client: Devonshire House School	Existing Basement Floor Plan		
Project: 69 Fitzjohns Avenue London NW3	1:50@A1/ 1:100@A3	Drawn by: eg	Rev: B
	20.7.10	Drawing No: 421.S02	

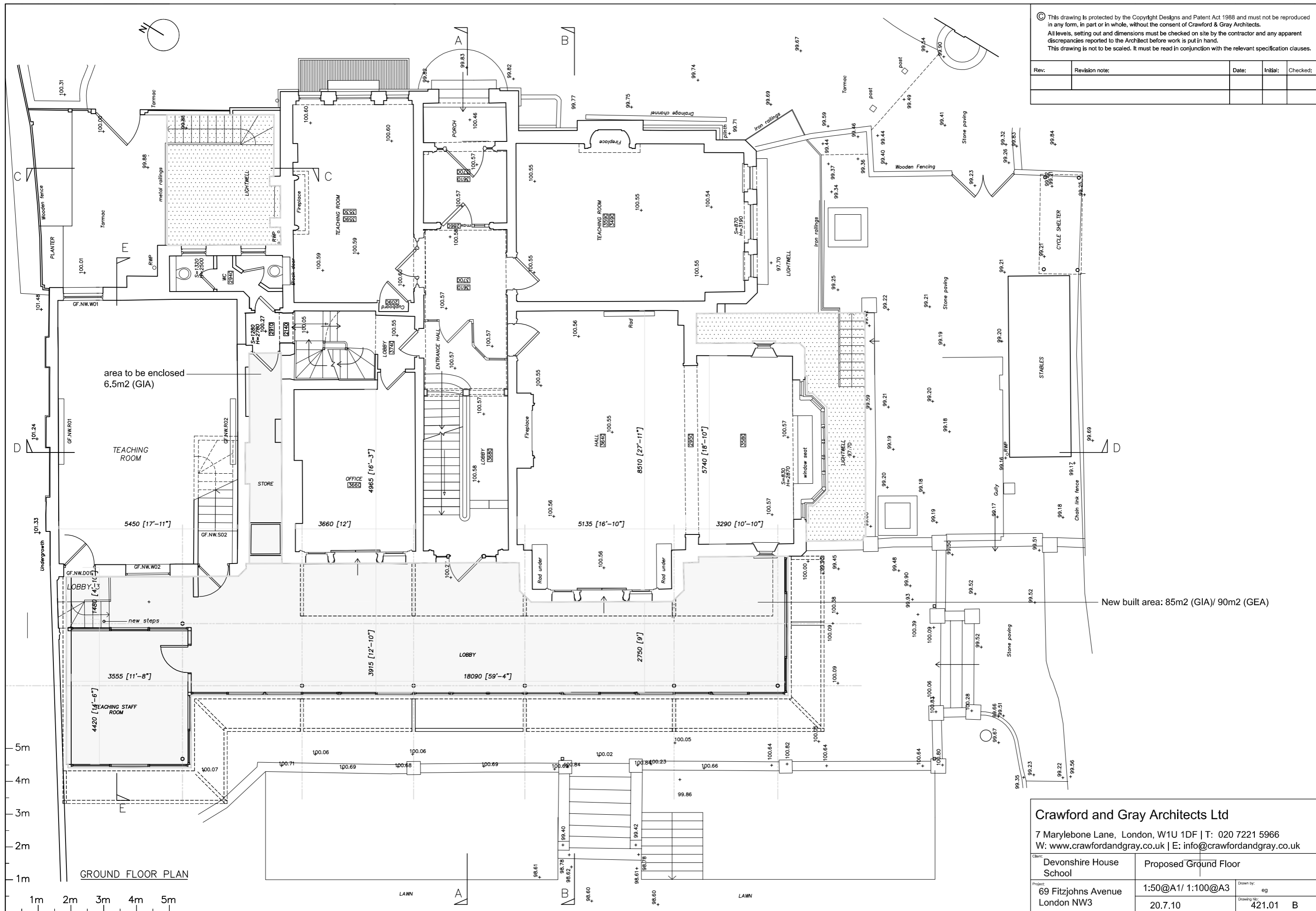


FIRST FLOOR PLAN

Crawford and Gray Architects Ltd			
7 Marylebone Lane, London, W1U 1DF T: 020 7221 5966 W: www.crawfordandgray.co.uk E: info@crawfordandgray.co.uk			
Client:	Devonshire House School	Existing First Floor Plan	
Project:	69 Fitzjohns Avenue London NW3	1:50@A1/ 1:100@A3	20.7.10
Drawn by:	eg	Checked by:	
Drawing No:	421.S03	Rev:	B

© This drawing is protected by the Copyright Designs and Patent Act 1988 and must not be reproduced in any form, in part or in whole, without the consent of Crawford & Gray Architects.
 All levels, setting out and dimensions must be checked on site by the contractor and any apparent discrepancies reported to the Architect before work is put in hand.
 This drawing is not to be scaled. It must be read in conjunction with the relevant specification clauses.

Rev:	Revision note:	Date:	Initial:	Checked:



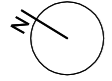
area to be enclosed
6.5m2 (GIA)

New built area: 85m2 (GIA)/ 90m2 (GEA)

Crawford and Gray Architects Ltd
 7 Marylebone Lane, London, W1U 1DF | T: 020 7221 5966
 W: www.crawfordandgray.co.uk | E: info@crawfordandgray.co.uk

Client: Devonshire House School	Project: Proposed Ground Floor
69 Fitzjohns Avenue London NW3	20.7.10
1:50@A1/ 1:100@A3	421.01 B

GROUND FLOOR PLAN







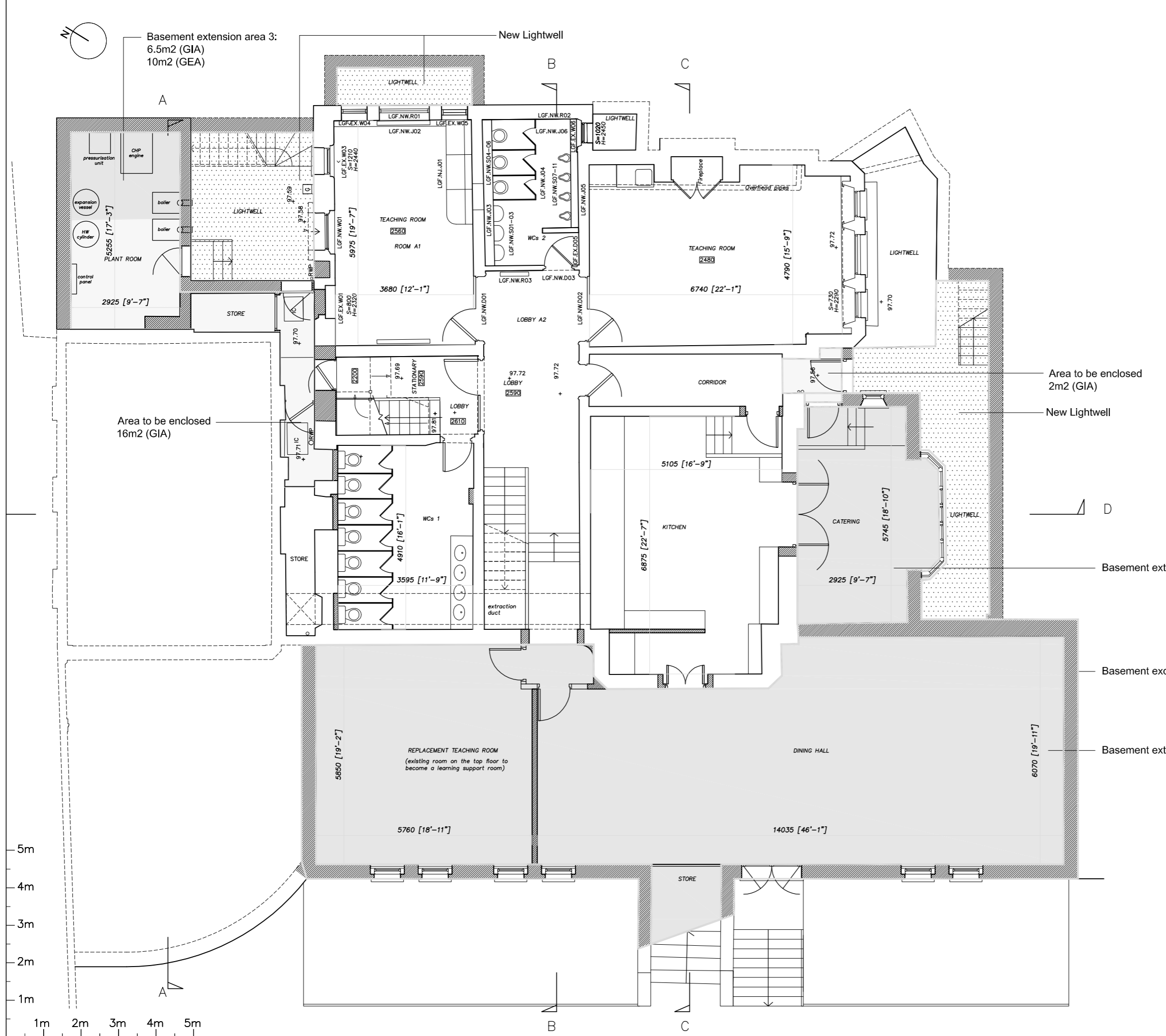
Basement extension area 3:
6.5m2 (GIA)
10m2 (GEA)

New Lightwell

© This drawing is protected by the Copyright Designs and Patent Act 1988 and must not be reproduced in any form, in part or in whole, without the consent of Crawford & Gray Architects.
All levels, setting out and dimensions must be checked on site by the contractor and any apparent discrepancies reported to the Architect before work is put in hand.
This drawing is not to be scaled. It must be read in conjunction with the relevant specification clauses.

Rev:	Revision note:	Date:	Initial:	Checked:

-  New Works
-  Excavated Extension Area
Total: 140m2 (GIA) / 163m2 (GEA)
-  Enclosed Extension Area
Total: 18m2 (GIA)
-  New/ extended lightwell



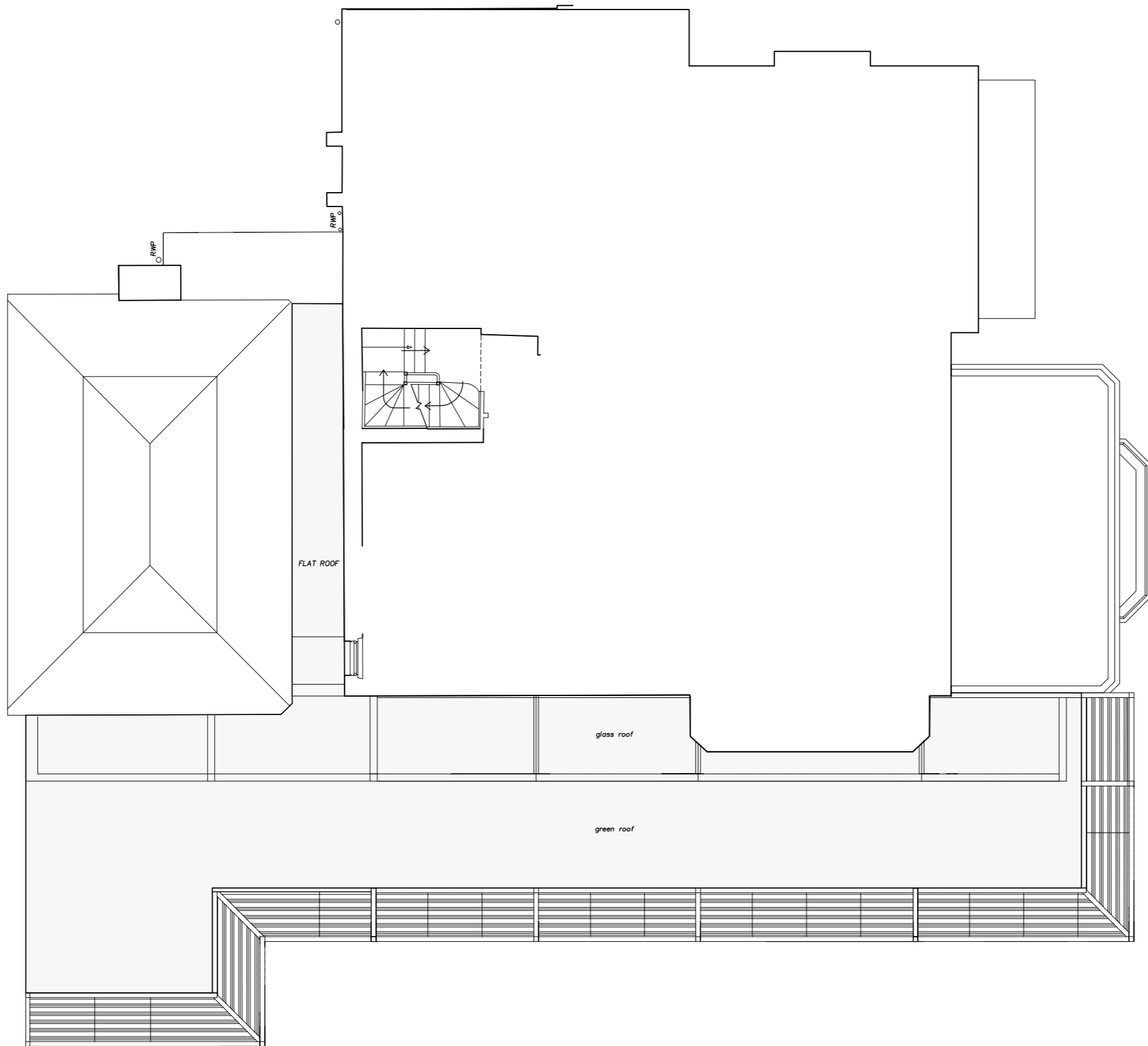
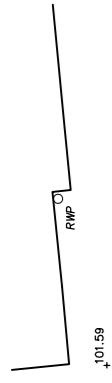
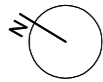
Area to be enclosed
2m2 (GIA)
New Lightwell

Basement extension Area 2: 19m2 (GIA)
Basement excavation area 1&2: 153m2 (GEA)
Basement extension area 1: 115m2 (GIA)

BASEMENT FLOOR PLAN

Crawford and Gray Architects Ltd
7 Marylebone Lane, London, W1U 1DF | T: 020 7221 5966
W: www.crawfordandgray.co.uk | E: info@crawfordandgray.co.uk

Client: Devonshire House School	Project: Proposed Basement Floor	Drawn by: eg	Checked by:
Project: 69 Fitzjohns Avenue London NW3	Scale: 1:50@A1/ 1:100@A3	Drawing No: 20.7.10	Rev: 421.02 B



FIRST FLOOR PLAN

© This drawing is protected by the Copyright Designs and Patent Act 1988 and must not be reproduced in any form, in part or in whole, without the consent of Crawford & Gray Architects.
All levels, setting out and dimensions must be checked on site by the contractor and any apparent discrepancies reported to the Architect before work is put in hand.
This drawing is not to be scaled. It must be read in conjunction with the relevant specification clauses.



Rev:	Revision note:	Date:	Initial:	Checked:

Crawford and Gray Architects Ltd				
7 Marylebone Lane, London, W1U 1DF T: 020 7221 5966 W: www.crawfordandgray.co.uk E: info@crawfordandgray.co.uk				
Client:	Devonshire House School			
Project:	Proposed First Floor Plan			
69 Fitzjohns Avenue London NW3	1:50@A1/ 1:100@A3	Drawn by: eg	Checked by:	
20.7.10	421.03	Rev: B		

APPENDIX E

Site Layout Plan



-  open lightwells
-  lightwells enclosed by floor grills

FITZJOHNS AVENUE

Site Plan

APPENDIX F

School Travel Plan (2013/2014)



Camden
Devonshire House Preparatory School

Basic information

View instructions

Lorem ipsum dolor sit amet, consectetur adipiscing elit. Lorem ipsum dolor sit amet, consectetur adipiscing elit>Lorem ipsum dolor sit amet, consectetur adipiscing elit>Lorem ipsum dolor sit amet, consectetur adipiscing elit>Lorem ipsum dolor sit amet, consectetur adipiscing elit>Lorem ipsum dolor sit amet, consectetur adipiscing elit>Lorem ipsum dolor sit amet, consectetur adipiscing elit

Staff contact details

Lead school contacts

- Kelly Duggan (secretary@devonshirehouseprepschool.co.uk)
- Rebecca Emberey (r.emberey@devonshirehouseprepschool.co.uk)
- Samantha (usoffice@devonshirehouseprepschool.co.uk)

No contacts found.

School details



Devonshire House Preparatory School

2 Arkwright Road, London, NW3 6AE
0207 4351916
www.devonshirehouseschool.co.uk
secretary@devonshirehouseprepschool.co.uk

Catchment area

Nearest Tube Station; Hampstead - Northern Line 0.3 miles (5 minute walk) Nearest Overground Station; Finchley Road & Frognal 0.4 miles (9 minute walk) Nearby Bus Routes; 268, 603, 46 24% of staff live locally, within 3.5km of either location but the majority, over a quarter, live a considerable distance away(over 45 minutes travel time) Another 28% of staff live 1 hour + in travel time from the school. Several staff, mainly Peri teachers who are considered part time staff, are out of London.

Expansion plans or changes to student school times

Although we are having works on current sites such as building an Eco garden and our living wall, we have no plans to expand our site or adjust our school times.

Bus routes used by students or staff

268; 603; 46, 13, 82, 113;

Borough	Borough
DFE number	202/6380
School type	Preparatory
School category	Private/Independent - Other
Age range	2-13
Number of students	642
Number of staff	109
Site opening hours	08:00 to 18:00
Breakfast club time	
Students school hours	08:20 to 15:50
Enrichment/extended schools finish time	17:30

Cycle parking facilities



Covered Sheffield stand
0 cycle parking spaces



Sheffield stand
0 cycle parking spaces



Cycle racks
10 cycle parking spaces



Helmet lockers
0 lockers



Scooter parking spaces
5 spaces



Other cycling parking spaces
0 spaces

School transport facilities

Staff parking spaces	8	Engineering measures in and around the school
Staff car share spaces	0	0
Disabled parking spaces	1	
Visitor parking spaces	4	
Student storage lockers	180	
Staff storage lockers	0	
Staff shower facilities	Yes	
Staff storage lockers	No	
Staff shower facilities		
Coach Parking facilities		
Motor scooter parking spaces		

Working group members

No Contacts Found.

Other information

We have developed an Eco club that is teacher led and involves pupils from each upper school year group to discuss and implement green and sustainable initiatives in every area of school life, including travel. We have recently been awarded an Eco School Silver Award.

Documents

Hands-up surveys

Survey results by respondent (current year to date)

STUDENTS

Survey completed by:

Responses: 642 Response rate: 100% Date: 01 September 2013

	Car	Car Share	Park and Stride	DLR	Rail	Tram	Tube	Public Bus	School Bus	River	Cycle	Buggy	Scooter	Walking
Actual 2012/13	232	44	6	0	5	0	35	58	14	0	8	0	11	229
	(36%)	(7%)	(1%)	(0%)	(1%)	(0%)	(5%)	(9%)	(2%)	(0%)	(1%)	(0%)	(2%)	(36%)
Preferred 2012/13	121	52	5	0	11	0	37	81	8	0	17	0	11	297
	(19%)	(8%)	(1%)	(0%)	(2%)	(0%)	(6%)	(13%)	(1%)	(0%)	(3%)	(0%)	(2%)	(46%)

STAFF

Survey completed by: Staff

Responses: 108 Response rate: 99% Date: 01 September 2013

	Car	Car Share	Park and Stride	DLR	Rail	Tram	Tube	Public Bus	School Bus	River	Cycle	Buggy	Scooter	Walking
Actual 2012/13	17	4	4	0	5	0	51	9	0	0	4	0	0	14
	(16%)	(4%)	(4%)	(0%)	(5%)	(0%)	(47%)	(8%)	(0%)	(0%)	(4%)	(0%)	(0%)	(13%)
Preferred	7	11	0	0	1	0	19	19	0	0	14	0	0	38

Consultations

Planned (4)

1 G6: Include safer and active travel in the school improvement plan

Planned date: 01 September 2014

Details

We have been in contact with the Bikability Training scheme and although have not made the Summer Term, we are looking to sign up for the Autumn for our year 5's & 6's

Documents

[Cycle Course.msg](#) 

S6: Consult parents / guardians on travel and transport issues

Planned date: 01 February 2015

Details

To encourage more involvement from parents regarding ideas & solutions leading on from our research into parent travel issues

Documents

No documents have been uploaded.

G6: Include safer and active travel in the school improvement plan

Planned date: 01 March 2015

Details

To maintain and develop strategies to make Devonshire House a truly sustainable institution leading on from our Eco Award

Documents

No documents have been uploaded.

S6: Consult parents / guardians on travel and transport issues

Planned date: 01 October 2015

Details

Parents will be consulted by completing surveys form the School Journeys, funded by the school.

Documents

No documents have been uploaded.

Completed (19)

S1: Set up a school working group

Completed date: 27 July 2012

Details

The Headmistress - Stephanie Piper;
Headmistress's PA - Ruth Patten; Health and Saefy and Deputy Head - Roger Vigano; Pupil-Head of Enviornmental - Bridger Ryland;
Principal - Michael Loveridge; Chair of parents committee - Mrs Hertier

Documents

No documents have been uploaded.

S4: Involve pupils in the travel plan process

Completed date: 27 July 2012

Details

Documents

No documents have been uploaded.

S3: Meetings with Governors, staff, senior management team and school council

Completed date: 27 July 2012

Details

Documents

No documents have been uploaded.

S4: Involve pupils in the travel plan process

Completed date: 27 July 2012

Details

Documents

No documents have been uploaded.

S5: In-depth research and consultation

Completed date: 27 July 2012

Details

Documents

No documents have been uploaded.

S6: Consult parents / guardians on travel and transport issues

Completed date: 27 July 2012

Details

Documents

No documents have been uploaded.

S3: Meetings with Governors, staff, senior management team and school council

Completed date: 27 July 2012

Details

Documents

No documents have been uploaded.

G3: Make residents and neighbours aware of the schools plans

Completed date: 27 July 2012

Details

Documents

No documents have been uploaded.

S4: Involve pupils in the travel plan process

Completed date: 27 July 2012

Details

Documents

No documents have been uploaded.

G5: The travel plan to be an item on the governors annual general meeting

Completed date: 27 July 2012

Details

Documents

No documents have been uploaded.

G6: Include safer and active travel in the school improvement plan

Completed date: 27 July 2012

Details

Documents

No documents have been uploaded.

1 S1: Set up a school working group

Completed date: 01 January 2013

Details

Documents

The Eco Club meets every Tuesday and discusses the possibility of different methods of travel. They present to other children in assembly and find ways to incorporate sustainable travel plans into the curriculum. Please see attached club schedule (Transport page 5)

[Eco School Action plan 2013-14.doc](#)



2 S4: Involve pupils in the travel plan process

Completed date: 01 September 2013

Details

We have incorporated many walking trips in our school calendar, planning events in the local area and when we do need to travel, using the Tube ticketing scheme, only using coaches when unavoidable. See- Easter Bunny Hunt, Freud Museum, Orienteering, Teddy Bears & French Picnics

Documents

[Walking trips.jpg](#) 
[walking trips 2.jpg](#) 

2 S3: Meetings with Governors, staff, senior management team and school council

Completed date: 01 March 2014

Details

The headmistress reports to the principal at regular meetings. As a result the bicycle storage area was implemented. Other issues agreed are the possibility of asking parents to withdraw pupils if they park dangerously, shaming car registration numbers published in the newsletter and the general promotion of safe drop offs / pick ups. Naming and shaming has now been implemented with Registrations and pictures going on noticeboards and newsletters.

Documents

[noticeboard.jpg](#) 
[parking pic.jpg](#) 

1 S4: Involve pupils in the travel plan process

Completed date: 01 March 2014

Details

We have recently implemented a new website that offers information on local public transport links plus walking distance from us to local tube / rail stations. the map is also linked to google maps directions where people can plan there journey to us. The more training i receive on web design, the more we can develop this. <http://devonshirehouseschool.co.uk/find-us-2/>

Documents

[website screenshot.docx](#) 

1 S4: Involve pupils in the travel plan process

Completed date: 01 April 2014

Details

The pupils will take part in the walk to school schemes and cycling days throughout the year (Eco team travel plans page 5)

Documents

[Eco School Action plan 2013-14.doc](#) 

11 S5: In-depth research and consultation

Completed date: 01 April 2014

Details

All parents are required to provide detailed and valid reasons as to why they require a parking permit. We have studied these responses to gauge the main problems that cause parents to drive to work. Some main issues include; Little/no direct bus routes, particularly primrose hill / belsize park way. Issues with air quality for asthma / allergy sufferers (recent survey seems to back this) and our location on a very steep hill for those with prams / toddlers. Examples & survey attached

Documents

[162.jpg](#) 
[267.jpg](#) 
[1050.jpg](#) 
[1179.jpg](#) 
[Highgate_Greens_Air_Pollution_Report_Jan201426.pdf](#) 
[386.jpg](#) 
[433.jpg](#) 
[686.jpg](#) 
[722.jpg](#) 
[944.jpg](#) 
[853.jpg](#) 

1 S1: Set up a school working group

Completed date: 01 April 2014

Details

We have started a running club for the upper school pupils which is led by the headmistress which takes place every Tuesday and involves teachers & pupils

Documents

[US clubs.JPG](#)

1 S4: Involve pupils in the travel plan process

Completed date: 01 June 2014

Details

We have incorporated our travel goals with our fundraising and set up a 'Road to Rwanda' fundraiser which encourages our pupils, parents and staff to walk, run, cycle, swim whatever they can to clock up the miles to help us cover the 6000 mile distance to Rwanda, where we are part of the Rwanda Aid Charity effort. We hope this will have a knock on effect and that families can find way of incorporating these travel methods into everyday life

Documents

[The_Road_to_Rwanda_2014.pdf](#)

Issues

Current (6)

5 Public Transport: LegacyIssue 5502

Date identified: 04 January 2012

Details

Lack of buses for east /west routes. WHERE? WHAT ARE THE NEAREST BUSES TO THE SCHOOL

Documents

[169.jpg](#)

[853.jpg](#)

[757.jpg](#)

[366.jpg](#)

[266.jpg](#)

1 Other: LegacyIssue 28717

Date identified: 04 January 2012

Details

Parking attendants are found to be targetting parents dropping off or collecting their children

Documents

[newsletter faxi.pdf](#)

Walking: LegacyIssue 28714

Date identified: 04 January 2012

Details

Safety of local crossing is an issue - SCHOOL NEED TO IDENTIFY WHICH CROSSING AND ROAD

Documents

No documents have been uploaded.

Local Community: LegacyIssue 5505

Date identified: 04 November 2012

Details

Finding places to park and then walk to school

Documents

No documents have been uploaded.

1 Personal Safety: LegacyIssue 52695

Date identified: 06 January 2014

Details

Documents

Parents exceptionally concerned due to recent violent muggings particularly targeted at mothers on the school run.

[ham and high screen shot.docx](#)

1 **Cycling: Legacy Issue 52693**

Date identified: 06 January 2014

Details

To get more of our pupils /staff cycling into school

Documents

[Cycle Course.msg](#)

Resolved (1)

3 **Local Community: Legacy Issue 28718**

Date resolved: 01 January 2014

Details

Some locals have complained to local press that some parents have misused permits by parking up in the high street.

Documents

[noticeboard.jpg](#)

[Outside no 69 evidence.msg](#)

[parking pic.jpg](#)

Targets

Planned (8)

Car (including motor cycle):

Planned date: 01 January 2015 **Current:** 36% **Target:** 33%

School Bus/Taxi:

Planned date: 01 January 2015 **Current:** 2% **Target:** 4%

Park and Stride (5 minute walk plus):

Planned date: 01 January 2015 **Current:** 1% **Target:** 3%

Scooter (non-powered):

Planned date: 01 January 2015 **Current:** 0% **Target:** 2%

Tube:

Planned date: 01 January 2015 **Current:** 5% **Target:** 8%

Cycle:

Planned date: 01 January 2015 **Current:** 2% **Target:** 3%

Walking:

Planned date: 01 March 2015 **Current:** 36% **Target:** 39%

Public Bus:

Planned date: 01 September 2015 **Current:** 9% **Target:** 10%

Completed (4)

Rail/Overground:

Completed date: 01 January 2014 **Current:** 1% **Target:** 2%

Public Bus: Result - Current 10%

Completed date: 01 January 2014 **Current:** 10% **Target:** 8%

Walking: Result - Current 36%

Completed date: 01 January 2014 Current: 36% Target: 36%

Car Share (with non-family members): Result - Car share is up to 4%, exceeding our expectations

Completed date: 01 June 2014 Current: 4% Target: 3%

Initiatives

Planned initiatives (4)

Walking, Cycling and Road Safety: A16.2 TfL New families toolkit (primary schools)

Owner: DHS Planned Date: 01 September 2014

Actions

Documents

No documents have been uploaded.

No linked activities found.

Walking, Cycling and Road Safety: A29 Other walking, cycling or road safety initiative - 1

Owner: DHS Planned Date: 01 December 2014

Actions

Documents

To increase the number of parents walking to school. We shall improve the safety of the crossings in front of both sites with parent volunteers / lollipop person. We shall also provide literacy to improve parent awareness of improved safety on the street. These issues will be discussed at parent meetings and with Camden Council.

No documents have been uploaded.

No linked activities found.

Smarter Driving: A39 Highway code is promoted to students, staff and parents

Owner: DHS Planned Date: 01 January 2015

Actions

Documents

No documents have been uploaded.

No linked activities found.

Walking, Cycling and Road Safety: A15 Junior Citizen weeks

Owner: Rebecca Emberery Planned Date: 01 June 2015

Actions

Documents

The school takes part in this every year and it is held at Coram Fields every June

No documents have been uploaded.

No linked activities found.


Completed initiatives (14)

1 Walking, Cycling and Road Safety: A20 Cycling lessons (PE)

Owner: DHS Completed Date: 01 September 2013

Actions

Documents

[cycle.JPG](#) 

[View summary of evidence](#)

Summary of supporting evidence

During Geography lessons pupils are taught about the benefits of cycling over driving and discuss how to make cycling a safe and realistic mode of transport

No linked activities found.

1 Walking, Cycling and Road Safety: A29 Other walking, cycling or road safety initiative - 1

Owner: DHS Completed Date: 01 December 2013

Actions

Documents

[US clubs.JPG](#)

View summary of evidence

Summary of supporting evidence

We have stated a running club every Tuesday incorporation staff and pupils. We performed a Local Area Assessment for our route over Hampstead Heath and actively encourage road safety en route

No linked activities found.

2 Walking, Cycling and Road Safety: A9 Scooter storage installed

Owner: DHS Completed Date: 01 December 2013

Actions

Documents

[EY Scooter Park.msg](#)

[photo2.JPG](#)

View summary of evidence

Summary of supporting evidence

We have installed a scooter storage unit ('Scooter Park') in our nursery and actively encourage parents to use it through our clarion messaging system

No linked activities found.

1 Smarter Driving: A40 Other smarter driving initiative - 1

Owner: DHS Completed Date: 01 December 2013

Actions

Documents

[bypass.JPG](#)

View summary of evidence

Summary of supporting evidence

We asked our pupils to take part in planning a Bypass and the benefits to traffic flow & pollution alongside the realities of cost and time and generating alternative ideas for drivers

No linked activities found.

1 Public Transport: A43 School promotes public transport

Owner: DHS Completed Date: 01 January 2014

Actions

To increase the amount of pupils travelling by public transport. We shall continue with previous years format of visits from Community Support Officers to discuss street safety. Take all upper school on the underground, learn to read the map, use an

Documents

[Tflreceipt.JPG](#)

View summary of evidence

Summary of supporting evidence

We have signed up to receive tube tickets

oyster card etc. Geography projects 'How do i get to school' + newsletter articles.

through the TFL School Party Team for school trips meaning we can avoid using coaches except when totally necessary. We promote tfl info on public transport in classrooms

No linked activities found.

1 *Public Transport: A42 Public transport used for school trips*

Owner: DHS Completed Date: 01 January 2014

Actions

Documents

[Tflreceipt.JPG](#)

View summary of evidence

Summary of supporting evidence

e have signed up to receive tube tickets through the TFL School Party Team for school trips meaning we can avoid using coaches except when totally necessary. We promote tfl info on public transport in classrooms

No linked activities found.

1 *Walking, Cycling and Road Safety: A20 Cycling lessons (PE)*

Owner: DHS Completed Date: 01 January 2014

Actions

Documents

[cycle.JPG](#)

View summary of evidence

Summary of supporting evidence

Our geography students are given lessons on cycle safety and the impact that cycling replacing driving would have on our enviroment

No linked activities found.

2 *Public Transport: A43 School promotes public transport*

Owner: DHS Completed Date: 01 February 2014

Actions

Promotion of transport to parents. We shall do this by providing a new map of the school with extensive details of transport links.

Documents

[tflpinboard.JPG](#)

[Website find us screenshot.docx](#)

View summary of evidence

Summary of supporting evidence

Map on website with detailed distances from local transport plus option to get direction for public transport, walking or cycling from their exact lication

No linked activities found.

1 *Public Transport: A51 Personal Safety*

Owner: DHS Completed Date: 01 February 2014

Actions

Documents

[stay safe pupils area.docx](#)

View summary of evidence

Summary of supporting evidence

We have added advice from our local constabulary to the pupils section of our new website. This covers ideas such as sitting near the driver, alarms & help points on buses &

the driver, always to stop points on buses & trains, planning your route and walking facing oncoming traffic

No linked activities found.

4 **Walking, Cycling and Road Safety: A16.1 Road safety talks**

Owner: DHS **Completed Date:** 01 March 2014

Actions

Documents

[496.jpg](#) 
[2 - Copy.jpg](#) 
[393.jpg](#) 
[1 - Copy.jpg](#) 

View summary of evidence

Summary of supporting evidence

Our year 4's are given travel issues to discuss in depth and taken out on the pavement to notarise potential safety issues and general problems caused by traffic

No linked activities found.

1 **Walking, Cycling and Road Safety: A14 Cycle training for pupils (E.g. Bikeability)**

Owner: DHS **Completed Date:** 01 June 2014

Actions

Documents

To have pupils in the upper school to receive cycle training. We shall contact Camden Council's Cycle Training Officer to arrange a programme

[Cycle Course.msg](#) 

View summary of evidence

Summary of supporting evidence

To have pupils in the upper school to receive cycle training. We have contacted Camden Council's bikability Officer to book in a cycle safety programme for the year 5&6's.

No linked activities found.


2 **Smarter Driving: A34 School promotes car sharing/has a car pool scheme**

Owner: DHS **Completed Date:** 01 June 2014

Actions

Documents

To plan a more in depth survey via the parents of exactly who drives in and car shares already in place. A matching up of postcode service. Promotion of this initiative in the school newsletter requesting parents that would like to take part in the scheme to inform the school office.

[website screenshot - parents area.docx](#) 
[newsletter faxi.pdf](#) 

View summary of evidence

Summary of supporting evidence

We have implemented the Faxi car pooling scheme and promoted this through our school newsletter and in the 'parents area' on our website
<http://devonshirehouseschool.co.uk/downloads2/>
(password acorn123)

No linked activities found.

2 **Smarter Driving: A34 School promotes car sharing/has a car pool scheme**

Owner: DHS **Completed Date:** 01 June 2014

Actions

Documents

[website screenshot - parents area.docx](#) 
[newsletter faxi.pdf](#) 

[View summary of evidence](#)

Summary of supporting evidence

We have signed up to the Faxe car pooling scheme. We have 18 people interested already and plan to promote to all new parents joining in September and also on our website

No linked activities found.

1 **Walking, Cycling and Road Safety: A5 Other walking events/competitions**

Owner: DHS Completed Date: 01 June 2014

Actions

Documents

[The_Road_to_Rwanda_2014.pdf](#) 

[View summary of evidence](#)

Summary of supporting evidence

We have incorporated our travel goals with our fundraising and set up a 'Road to Rwanda' fundraiser which encourages our pupils, parents and staff to walk, run, cycle, swim whatever they can to clock up the miles to help us cover the 6000 mile distance to Rwanda, where we are part of the Rwanda Aid Charity effort. We hope this will have a knock on effect and that families can find way of incorporating these travel methods into everyday life

No linked activities found.

Activities

Planned activities (1)

Promotion: PR8 Within the Prospectus

Owner: DHS Planned date: 01 January 2014

Actions

To include more public transport information in the new prospectus.

Documents

No documents have been uploaded.

Completed activities (11)

1 **Promotion: PR9 Letter from Head Teacher to Parents**

Owner: DHS Completed date: 01 September 2013

Actions

Documents

[Parents Handbook 2013-14.docx](#) 

1 **Curriculum: C6 Theatre in Education**

Owner: DHS Completed date: 01 November 2013

Actions

Documents

[FW Vicious Circle - Reminder.msg](#) 

1 **Promotion: PR1 Newsletter**

Owner: DHS Completed date: 01 November 2013

Actions

Documents

[Newsletter 1061 22.11.13 pod.pdf](#) 

2 Promotion: PR2 Notice Board

Owner: DHS Completed date: 01 January 2014

Actions

Documents

[parking pic.jpg](#) 

[Outside no 69 evidence.msg](#) 

3 Promotion: PR1 Newsletter

Owner: DHS Completed date: 01 January 2014

Actions

Documents

[parking pic.jpg](#) 

[Outside no 69 evidence.msg](#) 

[noticeboard.jpg](#) 

1 Promotion: PR6 Information on the website

Owner: DHS Completed date: 01 February 2014

Actions

We are having a new website designed currently and shall be having a more in depth information page about our location and transport links to the school

Documents

[Website find us screenshot.docx](#) 

1 Partnerships: PT1 Police/Safer Neighbourhood Team

Owner: DHS Completed date: 01 February 2014

Actions

Documents

[stay safe pupils area.docx](#) 

1 Partnerships: PT3 School is working towards or has achieved Eco School status

Owner: DHS Completed date: 01 February 2014

Actions

Documents

[ecoaward.docx](#) 

2 Curriculum: C13.2 Pupil journey planning

Owner: DHS Completed date: 01 February 2014

Actions

Documents

[US clubs.JPG](#) 

[Eco School Action plan 2013-14.doc](#) 

2 Curriculum: C3 Curriculum Focus on the Environment (KS1 & 2)

Owner: DHS Completed date: 01 February 2014

Actions

To increase pupil awareness of the benefits of more sustainable transport and the impact this may have. To be on the agenda for each curriculum review in a 24 monthly review cycle.

Documents

[US clubs.JPG](#) 

[Eco School Action plan 2013-14.doc](#) 

2 Curriculum: C5 Environmental benefits of active travel covered in curriculum

Owner: DHS Completed date: 01 March 2014

Actions

Documents

[go green presentation - cat v2 \(1\).pdf](#) 

[go green workshop.jpg](#) 

Going for Gold

Applied for (0)

No Going for Gold records found.

Accredited with (0)

No Going for Gold records found.

Sign Off

Accreditation level: Bronze

No working group members found.

Additional comments