

- Door closer (P21.12)
- 1 ½ pairs hinges (P21.6)
- Kick plate (P21.46)
- Push plate (P21.44)
- Door locks (P21.24)
- Door latches (P21. 28)
- Clear fire resistant glazed vision panels (L20.20A).
- Route out frame head and long edges to depth as required and supply and install intumescent strips/smoke seals to doors (L20.65A)

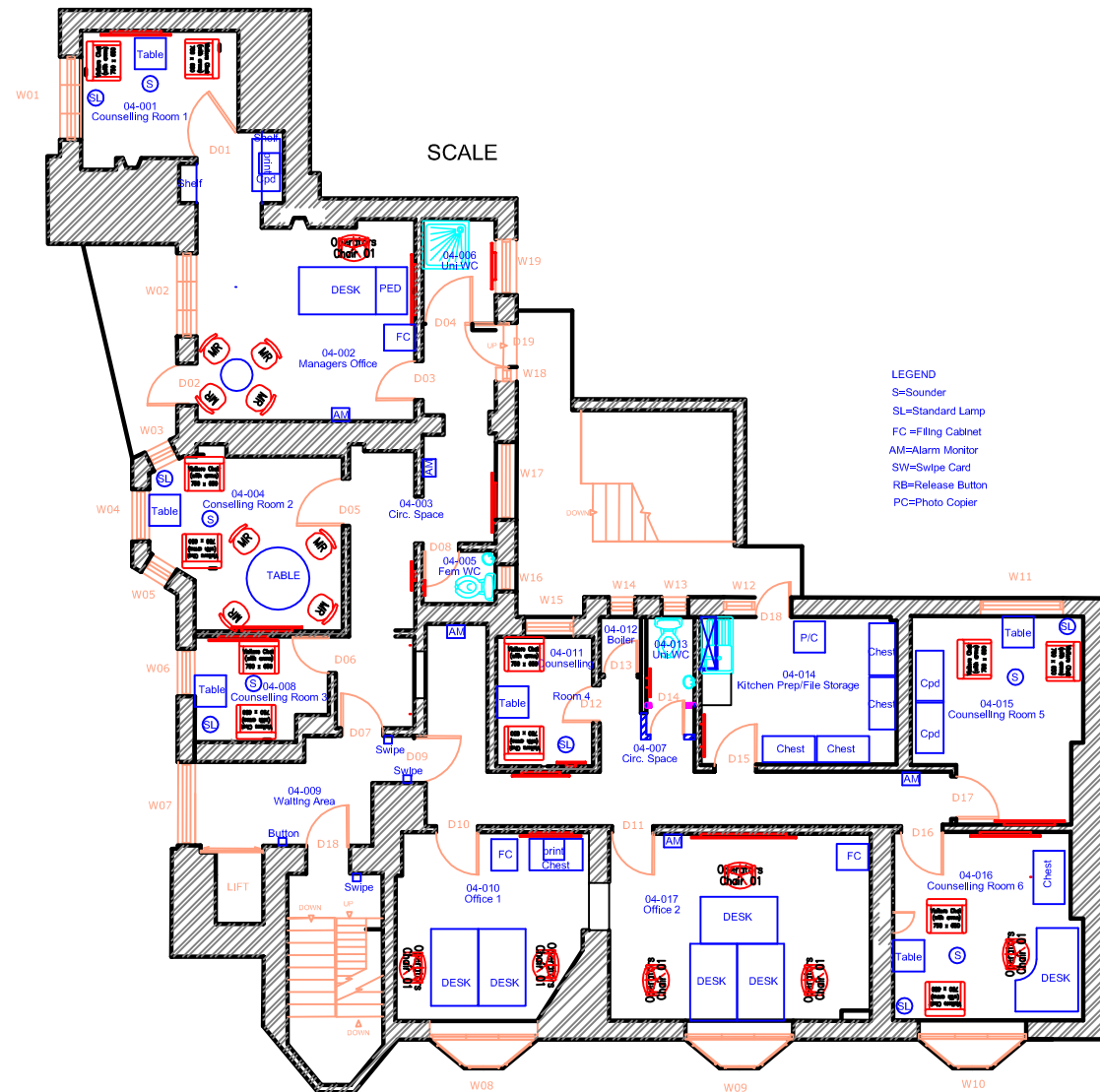
- Door closer (P21.12)
- 1 ½ pairs hinges (P21.6)
- Kick plate (P21.46)
- Push plate (P21.44)
- Swipe card and button (W90.38)
- Clear fire resistant glazed vision panels (L20.20A).
- Route out frame head and long edges to depth as required and supply and install intumescent strips/smoke seals to doors (L20.65A)
- The new fire doors are supplied with a BWF Certification and this documentation must be provided to the APM via hand-over information.

- 1½ pairs hinges (P21.6)
- Kick plate (P21.46)
- Push plate (P21.44)
- Privacy lock (P21.36)
- Door latch (P21.28)
- The new fire doors are s

documentation must be
information.

Erect new fire rated ½ hour metal studwork framing (K10.30A) with 12.5mm plasterboard both sides taped & jointed prepared & painted (M60.10) to form new partition extension to WC 04-013. Fill partition with insulation (K10.85) and have new door (L20.20A). Painted sw timber skirting both sides (P20.10)

Supply and install new kitchen units (N11.10) to include 1000mm base unit, inset sinks with taps (N11.30), 1000mm wall unit and worktop (N11.20) in area Kitchen Pre room 04-014. Connect new sink to waste and water supplies.



Do not scale from this drawing. If in doubt
ASK!

rev	description	date
B	Amendments following meeting	8/3/15
A	Furniture added	20/2/15


sweett

Sweett (UK) Limited
60 Gray's Inn Road
London WC1X 8AQ
tel: + 44 (0)207 061 9000
fax: + 44 (0)207 430 0603

project
NEW ACS OFFICES

title
**FOURTH FLOOR
PROPOSED BUILDING WORKS**

week: 1:50		@ A1
dm TH	cm PM	rep
date MAY 2015	date MAY 2015	date

drawing number
111131/AR/003

rev.
B