

Issued For
General Notes: THIS DRAWING HAS BEEN PREPARED BY DS DESIGN SOLUTIONS AND THE DATA CONTAINED HEREIN MAY BE USED OR REPRODUCED ONLY WITH DS DESIGN SOLUTIONS' APPROVAL.

Rev.	Description	Date	Signed	Checked

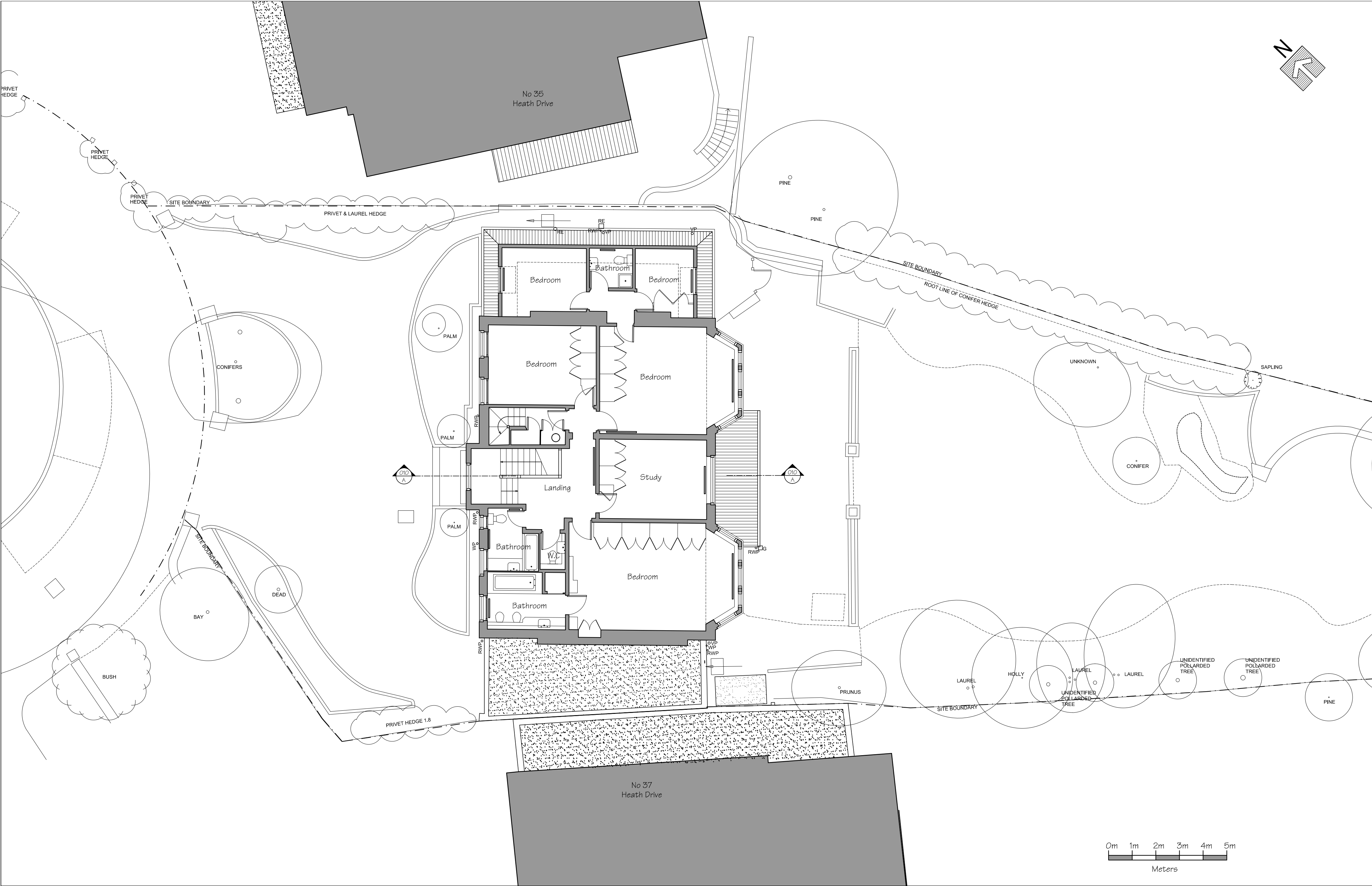
--

--

--

Scale 1:100 @ A2	Date 04.04.2012	Drawn by DS	Checked by DS
Drawing Title Ground Floor Plan As Existing			
Project 36 Heath Drive London NW3 7SD			

	Studio 18, Liddell Road London NW6 2EW Phone 020 7624 6680 Fax 020 7624 6681 www.DesignSolutionsUK.com		
	Project no. 2012/0265	Drawing no. 002	Revision 00



Issued For

General Notes:  
THIS DRAWING HAS BEEN PREPARED BY DS DESIGN SOLUTIONS AND THE DATA CONTAINED HEREIN MAY BE USED OR REPRODUCED ONLY WITH DS DESIGN SOLUTIONS' APPROVAL.

Rev.	Description	Date	Signed	Checked

--

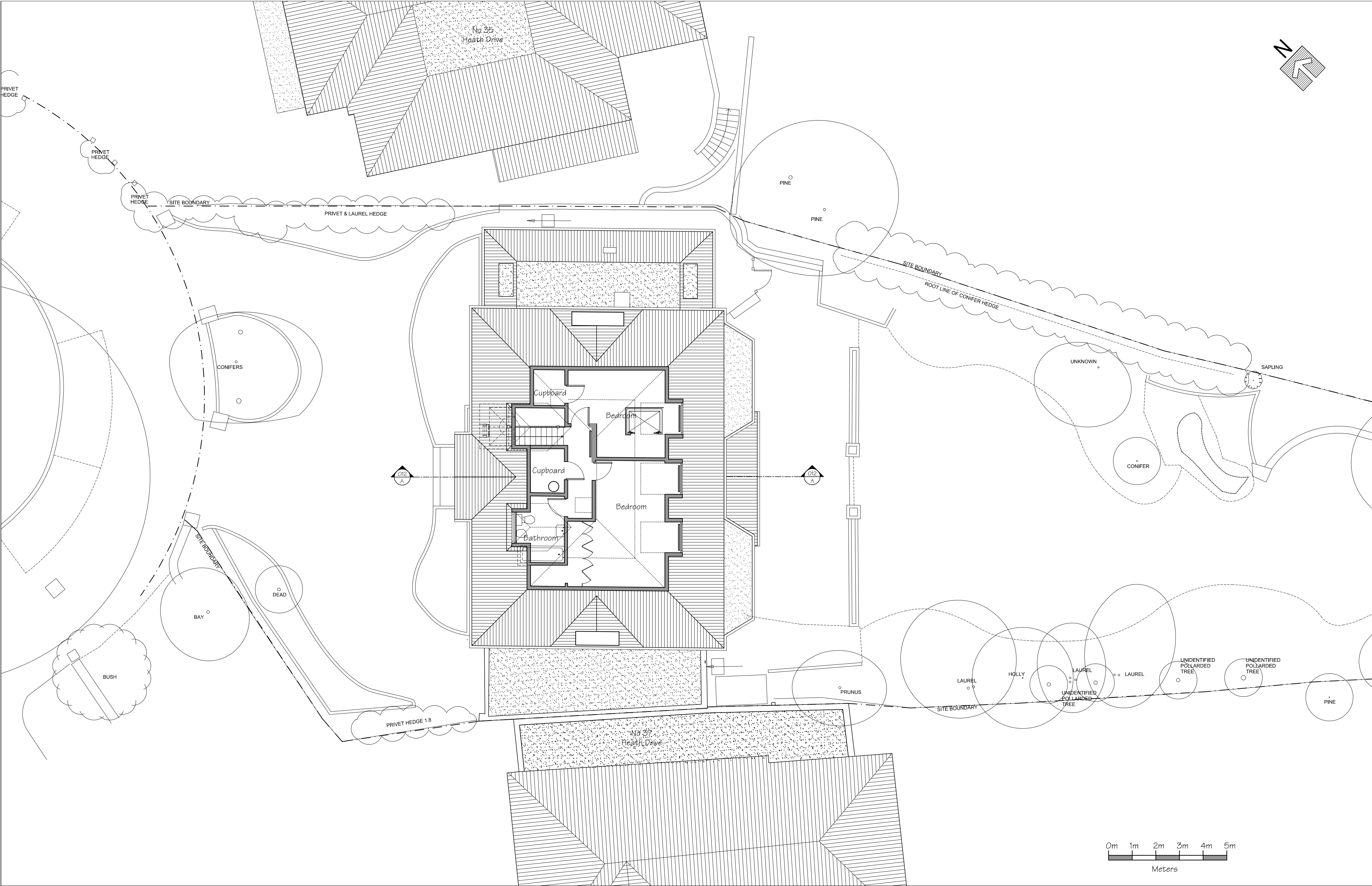
--

--

--

Scale 1:100 @ A2	Date 04.04.2012	Drawn by DS	Checked by DS
Drawing Title First Floor Plan As Existing			
Project 36 Heath Drive London NW3 7SD			

 design solutions www.DesignSolutionsUK.com	Studio 18, Liddell Road London NW6 2EW Phone 020 7624 6680 Fax 020 7624 6681	
	Project no. 2012/0265	Revision 003 00



Issued For

General Notes:  
THIS DRAWING HAS BEEN PREPARED BY DS DESIGN SOLUTIONS AND THE DATA CONTAINED HEREIN MAY BE USED OR REPRODUCED ONLY WITH DS DESIGN SOLUTIONS' APPROVAL.

Rev.	Description	Date	Signed	Checked

--

--

--

--

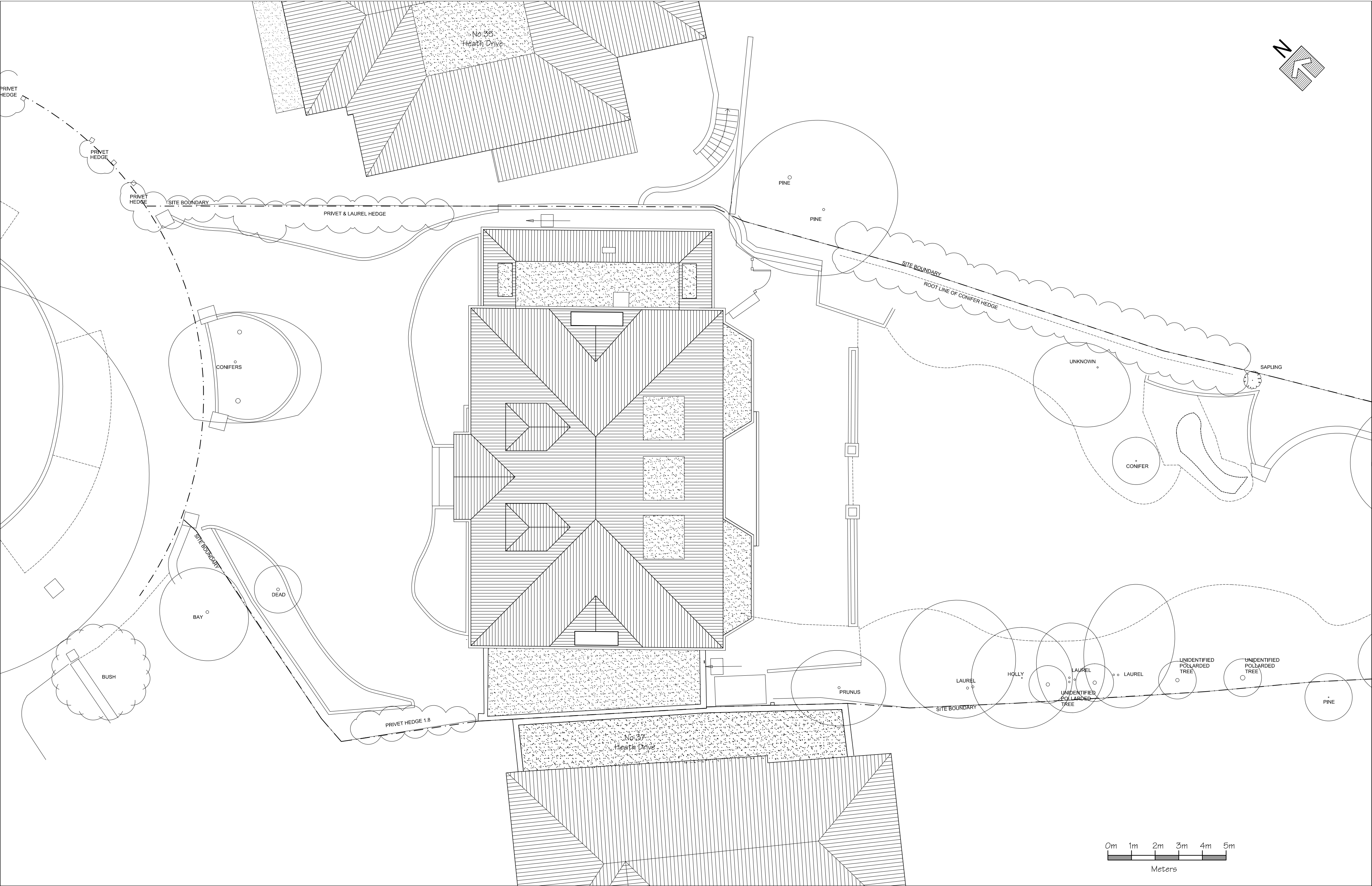
Scale 1:100 @ A2	Date 04.04.2012	Drawn by DS	Checked by DS
Drawing Title Second Floor Plan As Existing			
Project 36 Heath Drive London NW3 7SD			



design solutions

Studio 18,  
Liddell Road  
London NW6 2EW  
Phone: 020 7624 6680  
Fax: 020 7624 6681  
www.DesignSolutionsUK.com

Project no. 2012/0265	Drawing no. 004	Revision 00
--------------------------	--------------------	----------------



Issued For

General Notes  
THIS DRAWING HAS BEEN PREPARED BY DS DESIGN SOLUTIONS AND THE DATA CONTAINED HEREIN MAY BE USED OR REPRODUCED ONLY WITH DS DESIGN SOLUTIONS' APPROVAL.

Rev.	Description	Date	Signed	Checked

--

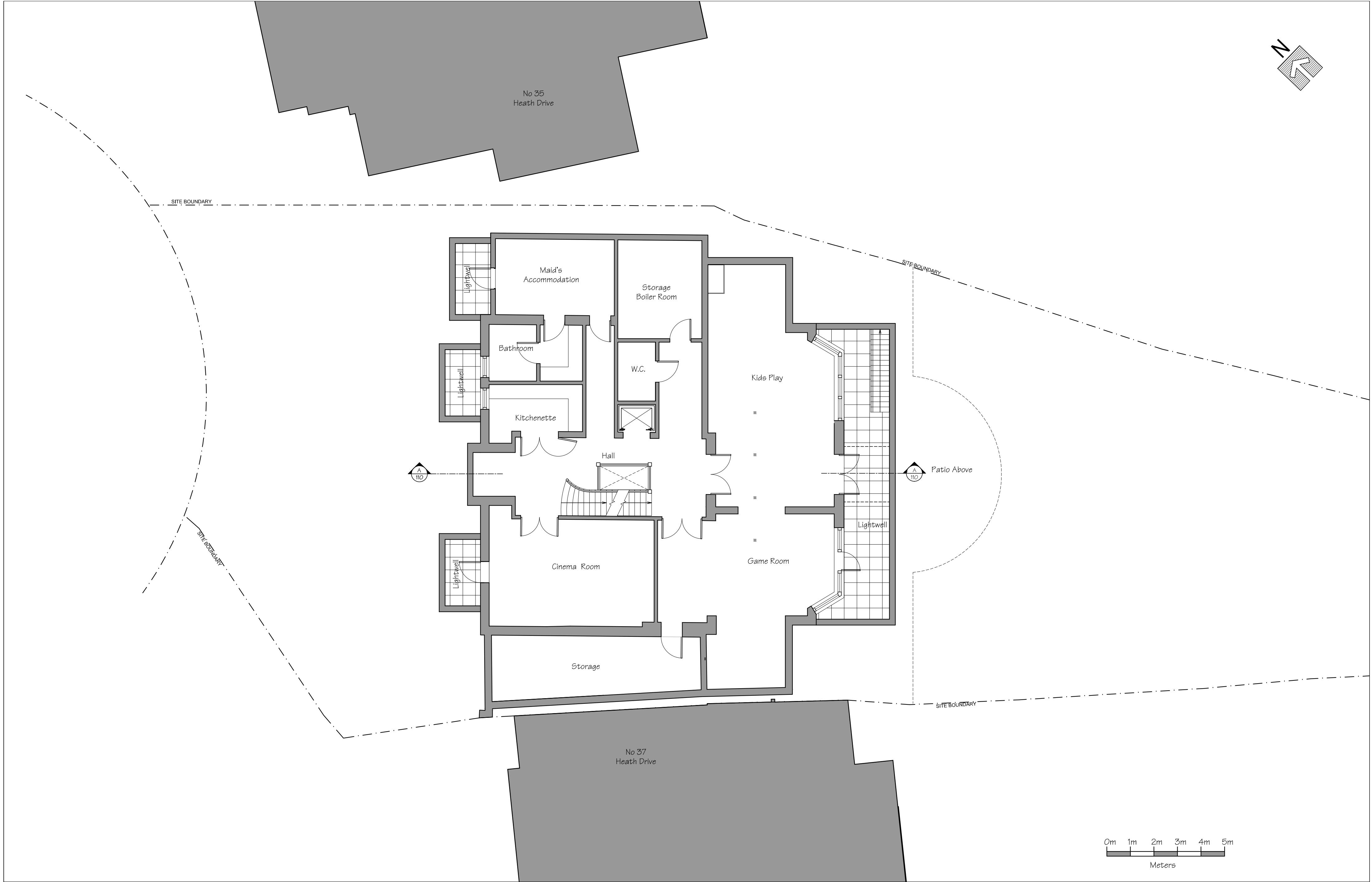
--

--

--

Scale 1:100 @ A2	Date 04.04.2012	Drawn by DS	Checked by DS
Drawing Title Roof Plan As Existing			
Project 36 Heath Drive London NW3 7SD			

 design solutions	Studio 18, Liddell Road London NW3 7SD Phone: 020 7624 6680 Fax: 020 7624 6681 www.DesignSolutionsUK.com	
	Project no. 2012/0265	Drawing no. 005
	Revision 00	



Issued For

General Notes:  
THIS DRAWING HAS BEEN PREPARED BY DS DESIGN SOLUTIONS AND THE DATA CONTAINED HEREIN MAY BE USED OR REPRODUCED ONLY WITH DS DESIGN SOLUTIONS' APPROVAL.

Rev.	Description	Date	Signed	Checked

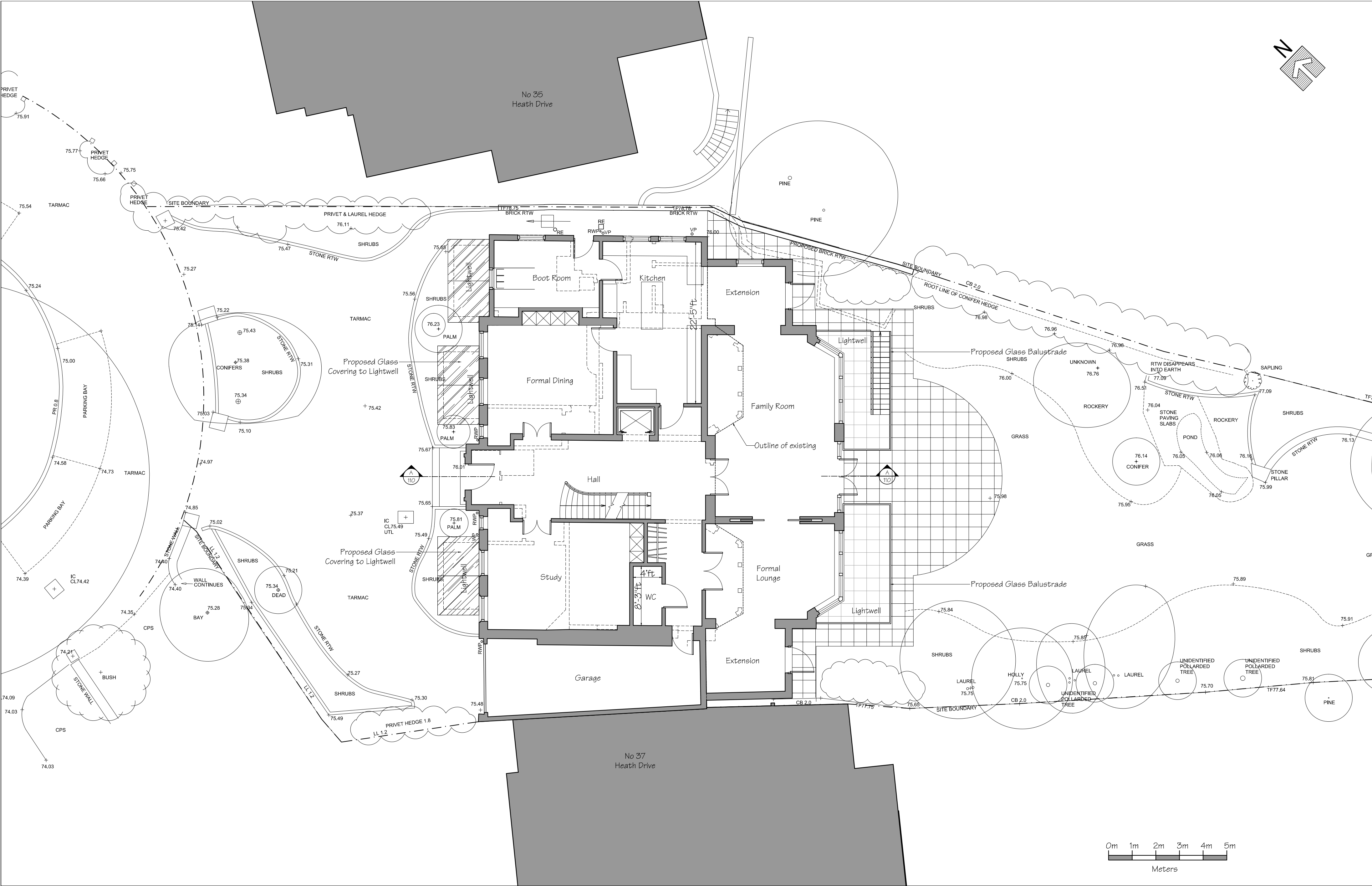
--

--

--

Scale	Date	Drawn by	Checked by
1:100 @ A2	04.04.2012	DS	DS
Drawing Title			
Lower Ground Floor Plan As Proposed			
Project			
36 Heath Drive London NW3 7SD			

 design solutions    www.DesignSolutionsUK.com			Studio 18, Liddell Road London NW6 2EW Phone: 020 7624 6680 Fax: 020 7624 6681
			Project no. 2012/0265
			Drawing no. 101
			Revision 00



Issued For

General Notes:  
THIS DRAWING HAS BEEN PREPARED BY DS DESIGN SOLUTIONS AND THE DATA CONTAINED HEREIN MAY BE USED OR REPRODUCED ONLY WITH DS DESIGN SOLUTIONS' APPROVAL.

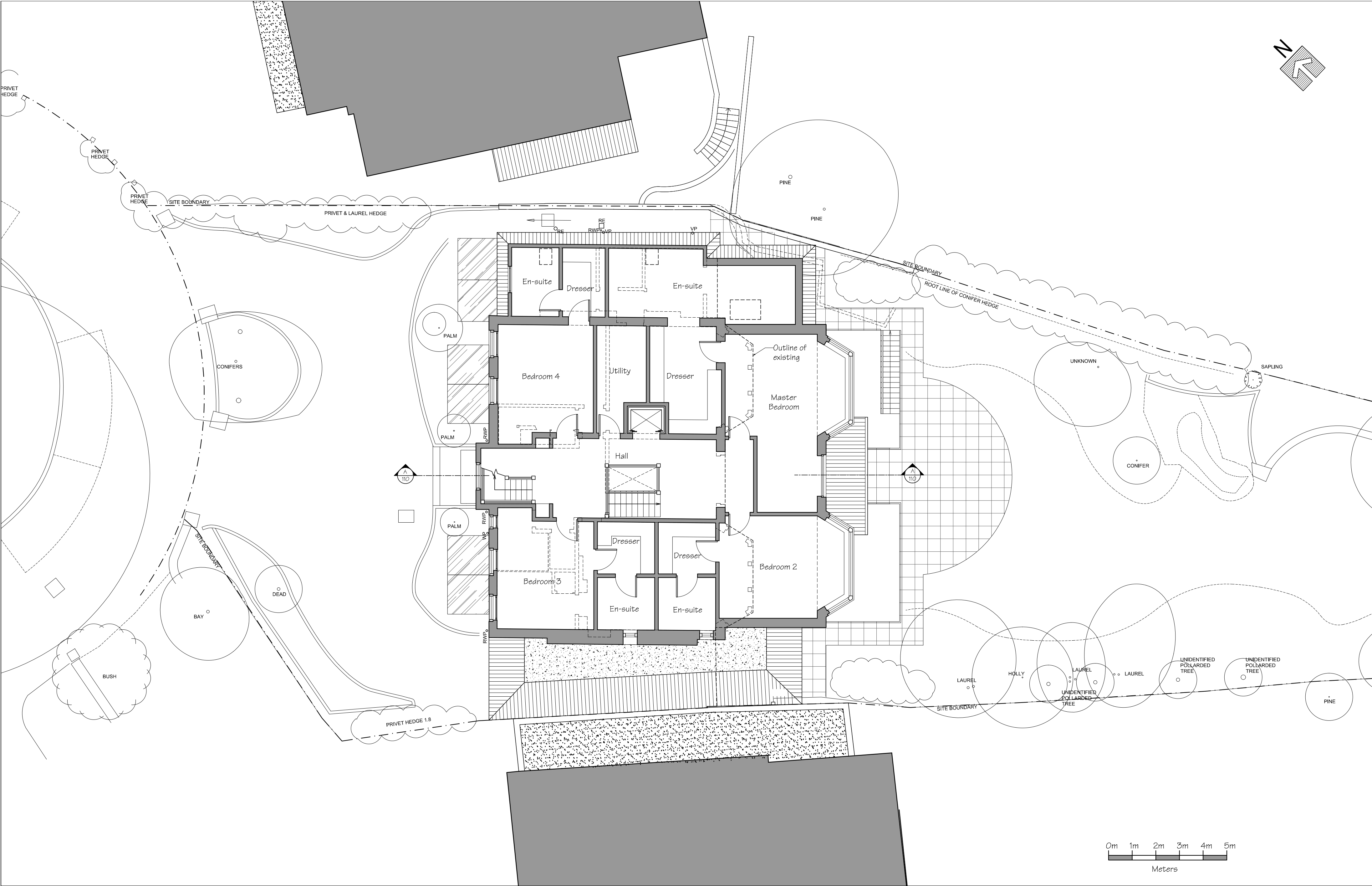
Rev.	Description	Date	Signed	Checked




Scale 1:100 @ A2	Date 04.04.2012	Drawn by DS	Checked by DS
Drawing Title Ground Floor Plan As Proposed			
Project 36 Heath Drive London NW3 7SD			

 design solutions www.DesignSolutionsUK.com	Studio 18, Liddell Road London NW6 2EW Phone 020 7624 6680 Fax 020 7624 6681	
	Project no. 2012/0265	Revision 102 00





Issued For

General Notes:  
THIS DRAWING HAS BEEN PREPARED BY DS DESIGN SOLUTIONS AND THE DATA CONTAINED HEREIN MAY BE USED OR REPRODUCED ONLY WITH DS DESIGN SOLUTIONS' APPROVAL.

Rev.	Description	Date	Signed	Checked

--

--

--

--

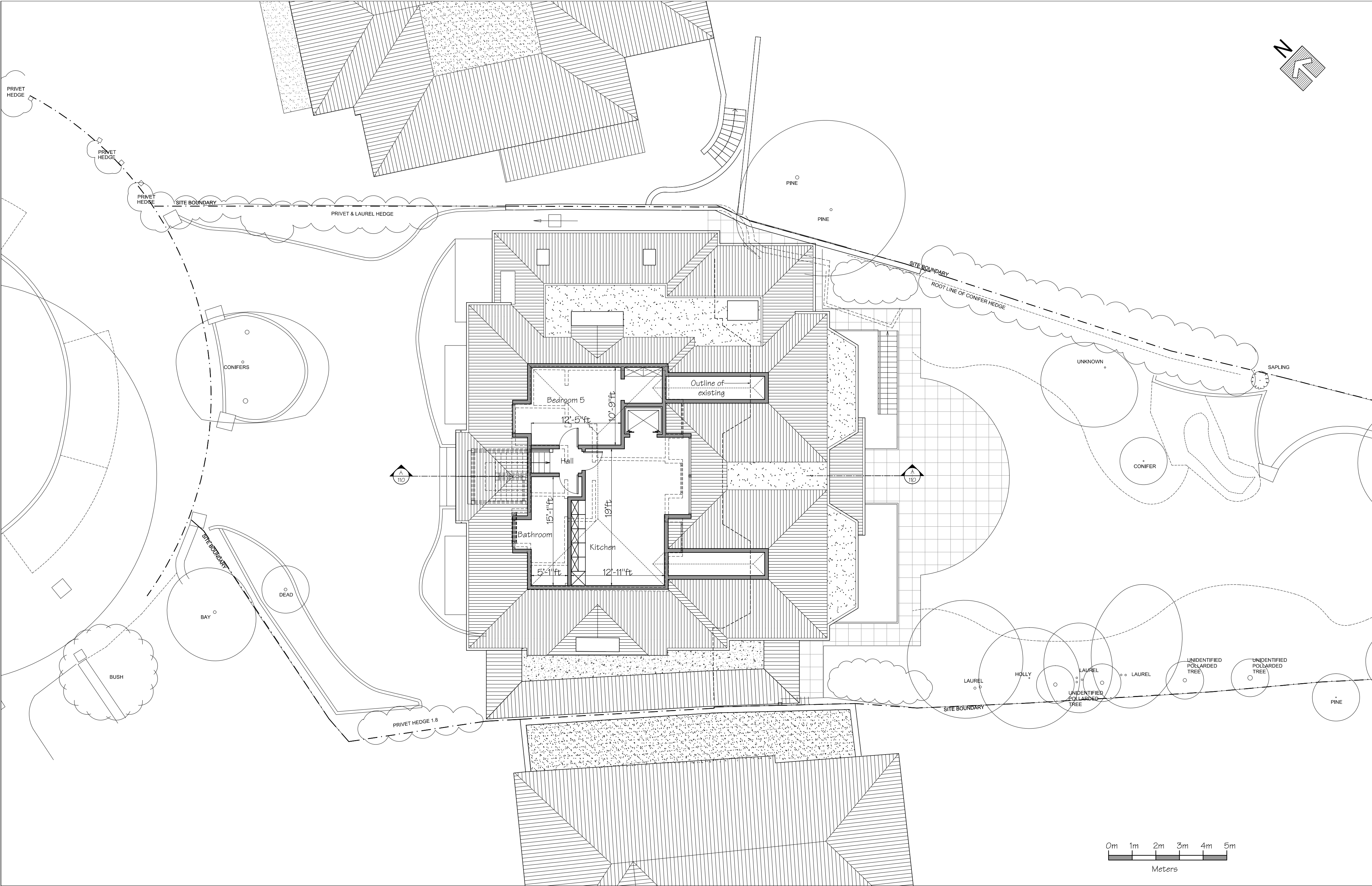
Scale 1:100 @ A2	Date 04.04.2012	Drawn by DS	Checked by DS
Drawing Title First Floor Plan As Proposed			
Project 36 Heath Drive London NW3 7SD			



design solutions

Studio 18, Liddell Road  
London NW6 2EW  
Phone 020 7624 6680  
Fax 020 7624 6681  
www.DesignSolutionsUK.com

Project no. 2012/0265	Drawing no. 103	Revision 00
--------------------------	--------------------	----------------



Issued For
General Notes: THIS DRAWING HAS BEEN PREPARED BY DS DESIGN SOLUTIONS AND THE DATA CONTAINED HEREIN MAY BE USED OR REPRODUCED ONLY WITH DS DESIGN SOLUTIONS' APPROVAL.

Rev.	Description	Date	Signed	Checked

--

--

--

Scale	Date	Drawn by	Checked by
1:100 @ A2	04.04.2012	DS	DS
Drawing Title			
Second Floor Plan As Proposed			
Project			
36 Heath Drive London NW3 7SD			

Project no.		Drawing no.		Revision
2012/0265		104		00

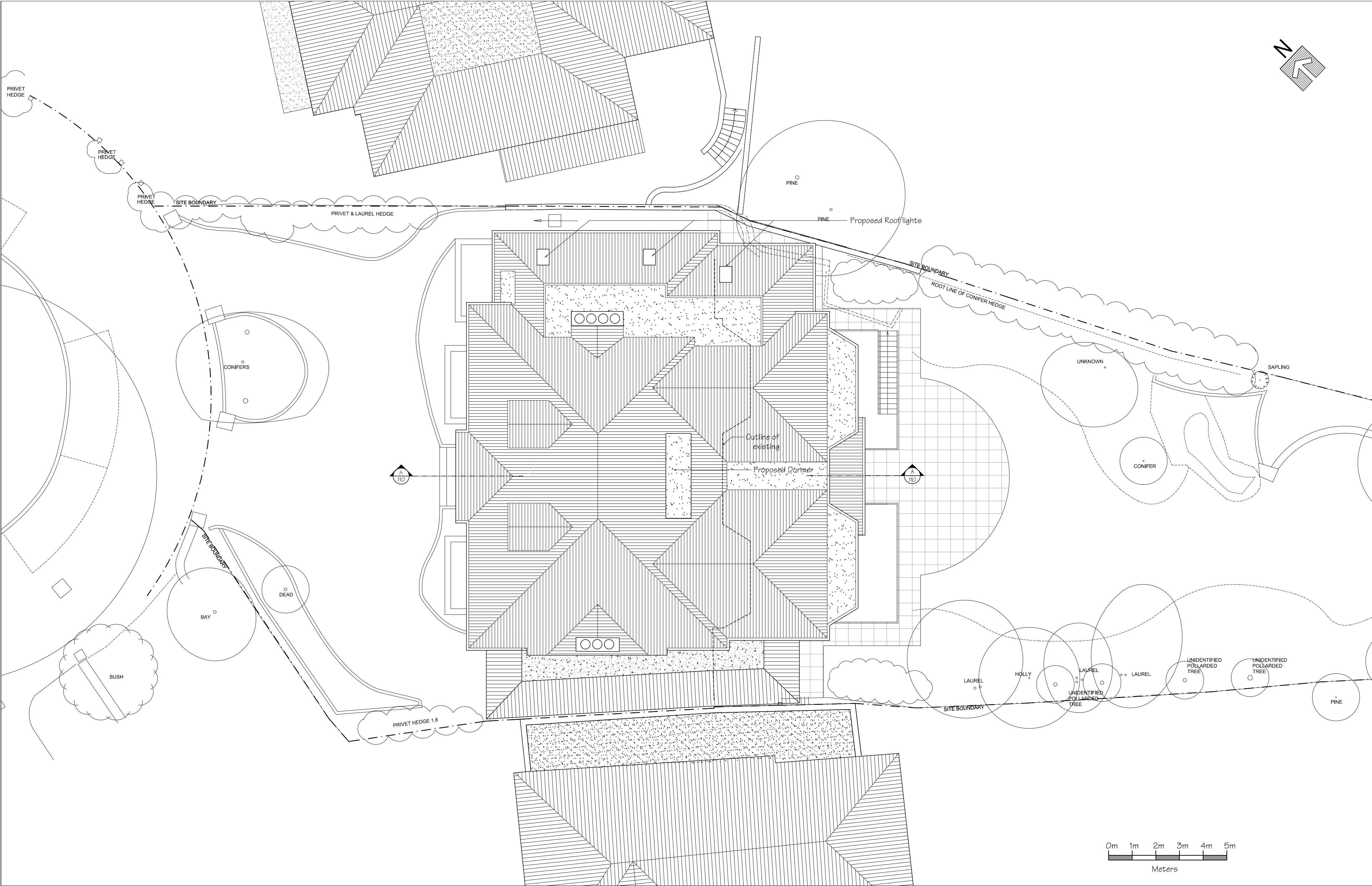


design solutions

Studio 18,  
London NW6 2EW  
Phone: 020 7624 6680  
Fax: 020 7624 6681

www.DesignSolutionsUK.com





Issued For

General Notes:  
THIS DRAWING HAS BEEN PREPARED BY DS DESIGN SOLUTIONS AND THE DATA CONTAINED HEREIN MAY BE USED OR REPRODUCED ONLY WITH DS DESIGN SOLUTIONS' APPROVAL.

Rev.	Description	Date	Signed	Checked

--

--

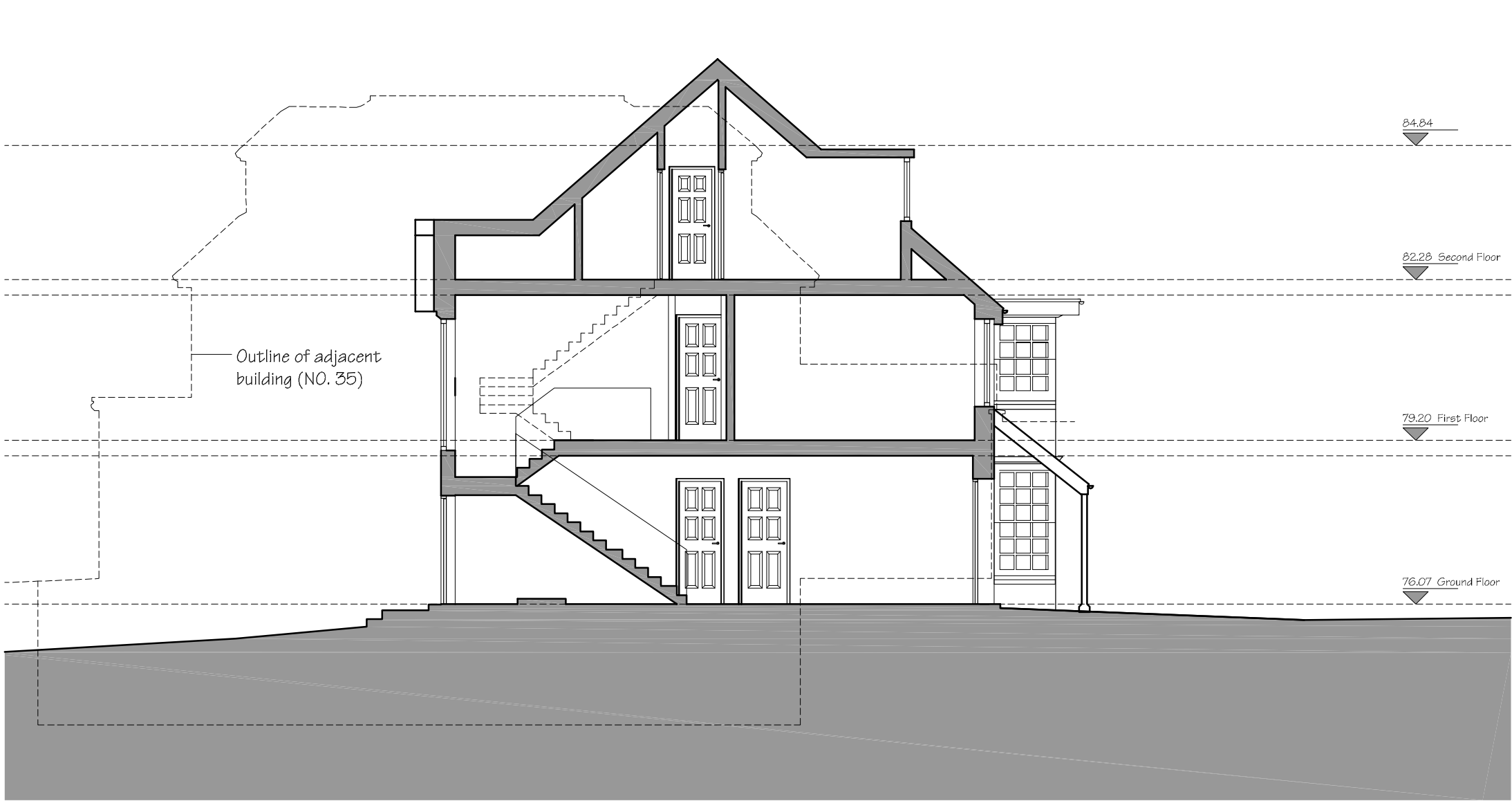
--

Scale 1:100 @ A2	Date 04.04.2012	Drawn by DS	Checked by DS
Drawing Title Roof Plan As Proposed			
Project 36 Heath Drive London NW3 7SD			

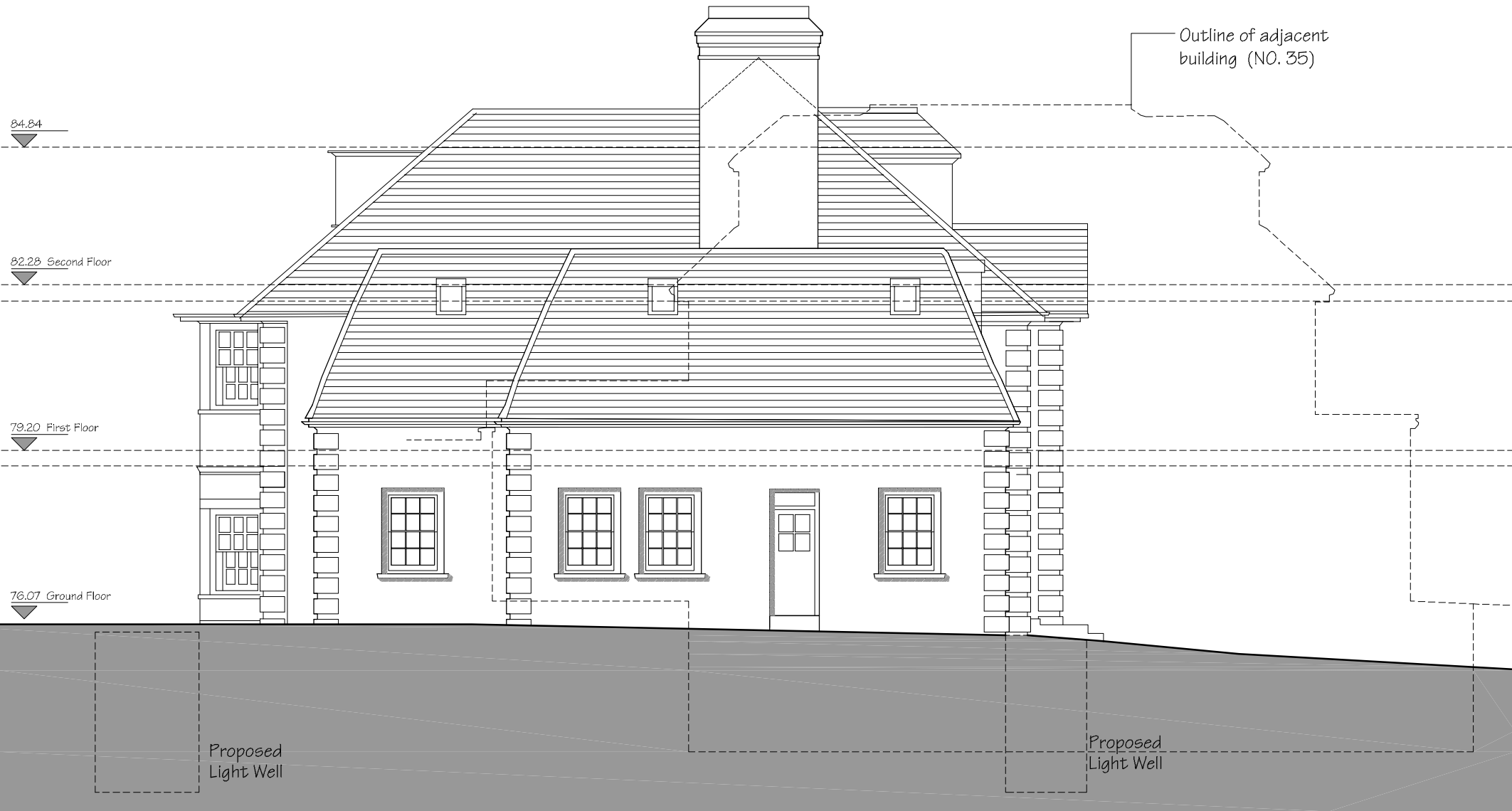
 design solutions www.DesignSolutionsUK.com	Studio 18, Liddell Road London NW6 2EW Phone 020 7624 6680 Fax 020 7624 6681	
	Project no. 2012/0265	Revision 005



Existing North East Elevation



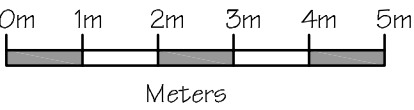
Existing Section A-A



Proposed North East Elevation



Proposed Section A-A



Issued For	Rev.	Description	Date	Signed	Checked
General Notes: THIS DRAWING HAS BEEN PREPARED BY DS DESIGN SOLUTIONS AND THE DATA CONTAINED HEREIN MAY BE USED OR REPRODUCED ONLY WITH DS DESIGN SOLUTIONS' APPROVAL.					

--	--	--	--	--	--

--	--	--	--	--	--

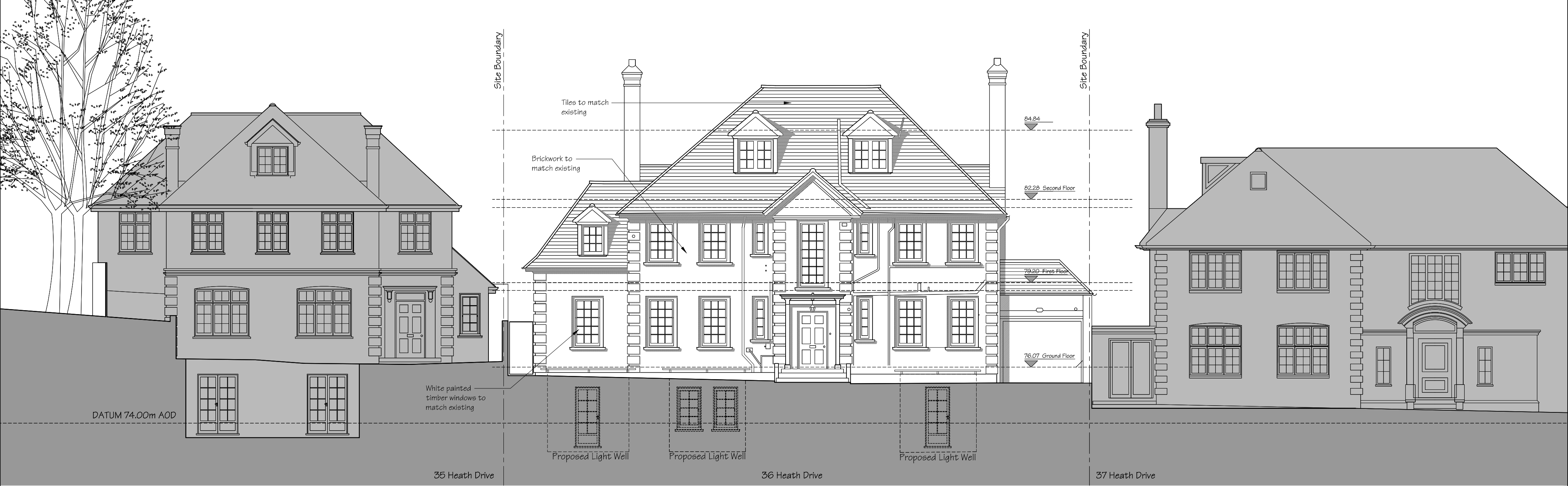
--	--	--	--	--	--

Scale 1:100 @ A2	Date 04.04.2012	Drawn by DS	Checked by DS
Drawing Title Side Elevation And Section A-A Existing and Proposed			
Project 36 Heath Drive London NW3 7SD			

 design solutions www.DesignSolutionsUK.com	Studio 18, Liddell Road London NW3 7SD Phone: 020 7624 6680 Fax: 020 7624 6681	
	Project no. 2012/0265	Drawing no. 010 Revision 00



Existing Front Elevation



Proposed Front Elevation

Issued For	Rev.	Description	Date	Signed	Checked

General Notes

THIS DRAWING HAS BEEN PREPARED BY DS DESIGN SOLUTIONS AND THE DATA CONTAINED HEREIN MAY BE USED OR REPRODUCED ONLY WITH DS DESIGN SOLUTIONS' APPROVAL.

Scale	Date	Drawn by	Checked by
1:100 @ A2	04.04.2012	DS	DS
Drawing Title			
Front Elevation Existing and Proposed			
Project			
36 Heath Drive London NW3 7SD			

Project no.	Drawing no.	Revision
2012/0265	020	00

design solutions www.DesignSolutionsUK.com

Studio 18, Liddell Road, London NW6 2EW  
Phone: 020 7624 6680  
Fax: 020 7624 6681



Existing Rear Elevation



Proposed Rear Elevation

Issued For	Rev.	Description	Date	Signed	Checked

General Notes

THIS DRAWING HAS BEEN PREPARED BY DS DESIGN SOLUTIONS AND THE DATA CONTAINED HEREIN MAY BE USED OR REPRODUCED ONLY WITH DS DESIGN SOLUTIONS' APPROVAL.

0m 1m 2m 3m 4m 5m

Meters

Scale	Date	Drawn by	Checked by
1:100 @ A2	04.04.2012	DS	DS
Drawing Title			
Rear Elevation Existing and Proposed			
Project			
36 Heath Drive London NW3 7SD			

Project no.	Drawing no.	Revision
2012/0265	021	00

**DS**

design solutions

www.DesignSolutionsUK.com

Studio 18, Liddell Road, London NW3 7SD  
Phone: 020 7624 6680  
Fax: 020 7624 6681