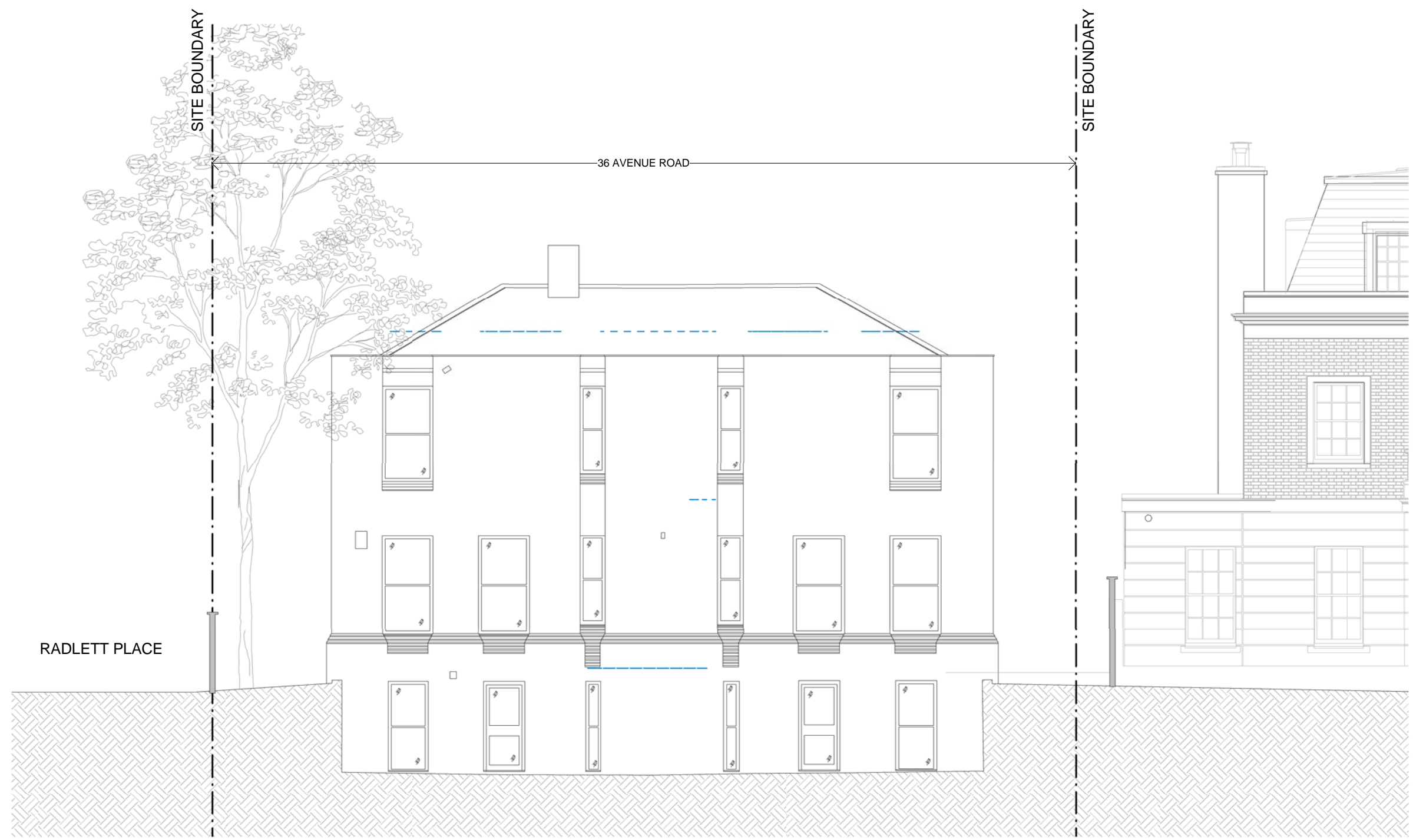


General notes:
 This drawing is copyright of KSR architects. This drawing must be read in conjunction with the Designer's Risk Assessment, specification and all other relevant documentation and drawings. KSR architects accept no liability for any expense, loss or damage of whatsoever nature and however arising from any variation made to this drawing or in the execution of the work to which it relates which has not been referred to them and their approval obtained.
 Do not scale from this drawing or the digital data, only figured dimensions are to be used. For Planning refer to linear scale.
 Check all dimensions on site prior to carrying out any works – advise any discrepancy
 Notes/Legends



1 EXISTING REAR ELEVATION
 1:50



Rev	Notes	date	By	Chkd	
© KSR architects					
PLANNING					
Key Plan					
<p>KSRARCHITECTS KSR Architects LLP info@ksrarchitects.com 14 Grosvenor Street t +44 (0)20 7492 5000 London W1W 0ND www.ksrarchitects.com</p>					
Project: 36 AVENUE RD					
Title: EXISTING REAR ELEVATION					
Date:	12/08/14	Drawn By:	DC	Checked:	RS
Scale: 1:50 @ A1 /					
Project Ref:	AVA	Drawing No:	AVA - P-EX320	Revision:	