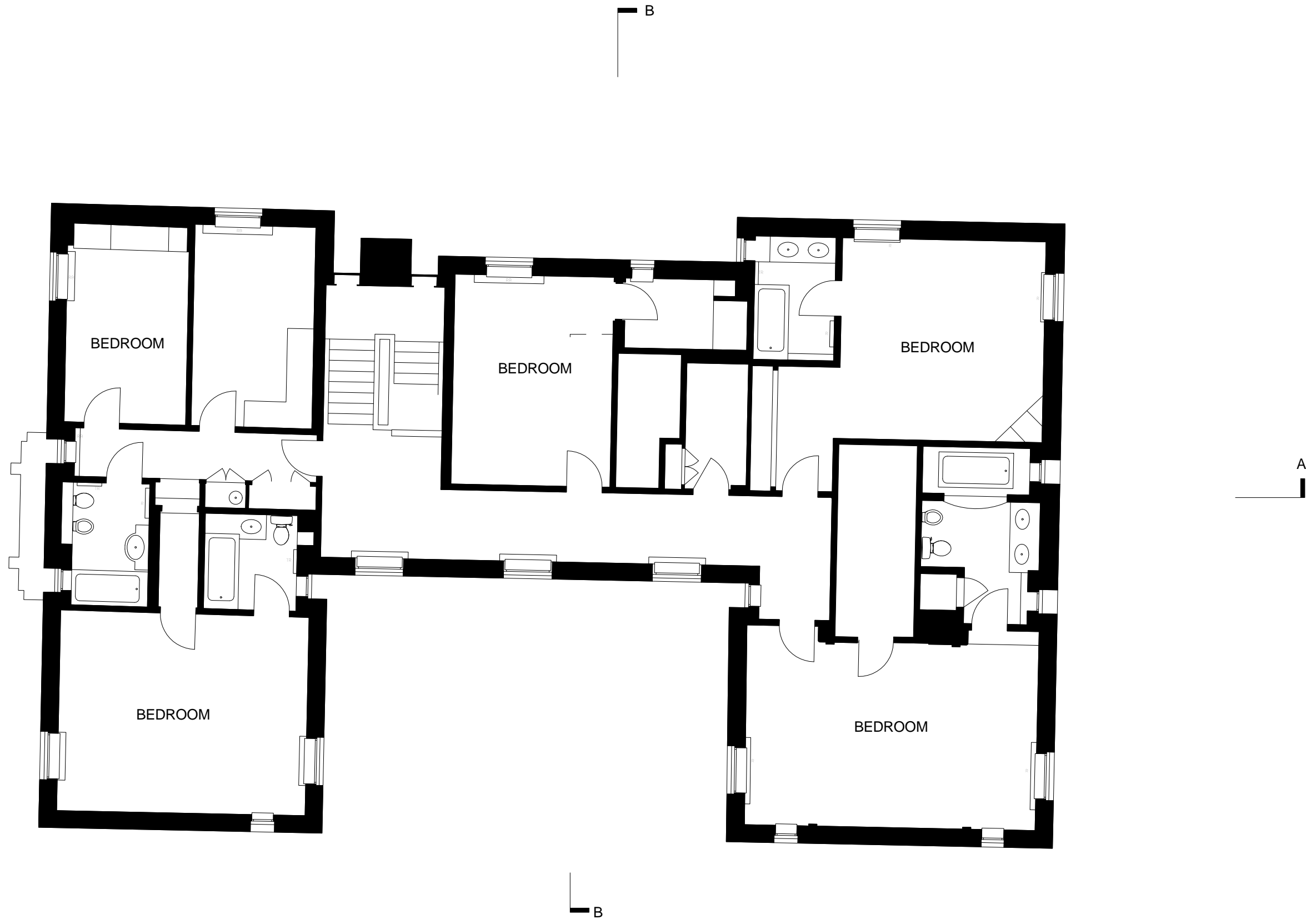


General notes:  
 This drawing is copyright of KSR architects. This drawing must be read in conjunction with the Designer's Risk Assessment, specification and all other relevant documentation and drawings. KSR architects accept no liability for any expense, loss or damage of whatsoever nature and however arising from any variation made to this drawing or in the execution of the work to which it relates which has not been referred to them and their approval obtained.  
 Do not scale from this drawing or the digital data, only figured dimensions are to be used. For Planning refer to linear scale.  
 Check all dimensions on site prior to carrying out any works - advise any discrepancy  
 Notes/Legends



1 EXISTING FIRST FLOOR PLAN  
 1:50

Rev	Notes	date	By	Chkd	
© KSR architects					
<b>PLANNING</b>					
Key Plan					
<b>KSRARCHITECTS</b>					
<small>KSR Architects LLP    info@ksrarchitects.com        14 Grosvenor Street    t +44 (0)20 7882 5000        London W1W 0ND    www.ksrarchitects.com</small>					
Project: 36 AVENUE RD					
Title: EXISTING FIRST FLOOR PLAN					
Date:	12/08/14	Drawn By:	DC	Checked:	RS
Scale: 1:50 @ A1 /					
Project Ref:	AVA	Drawing No:	AVA - P-EX110	Revision:	

