

**key to symbols:**

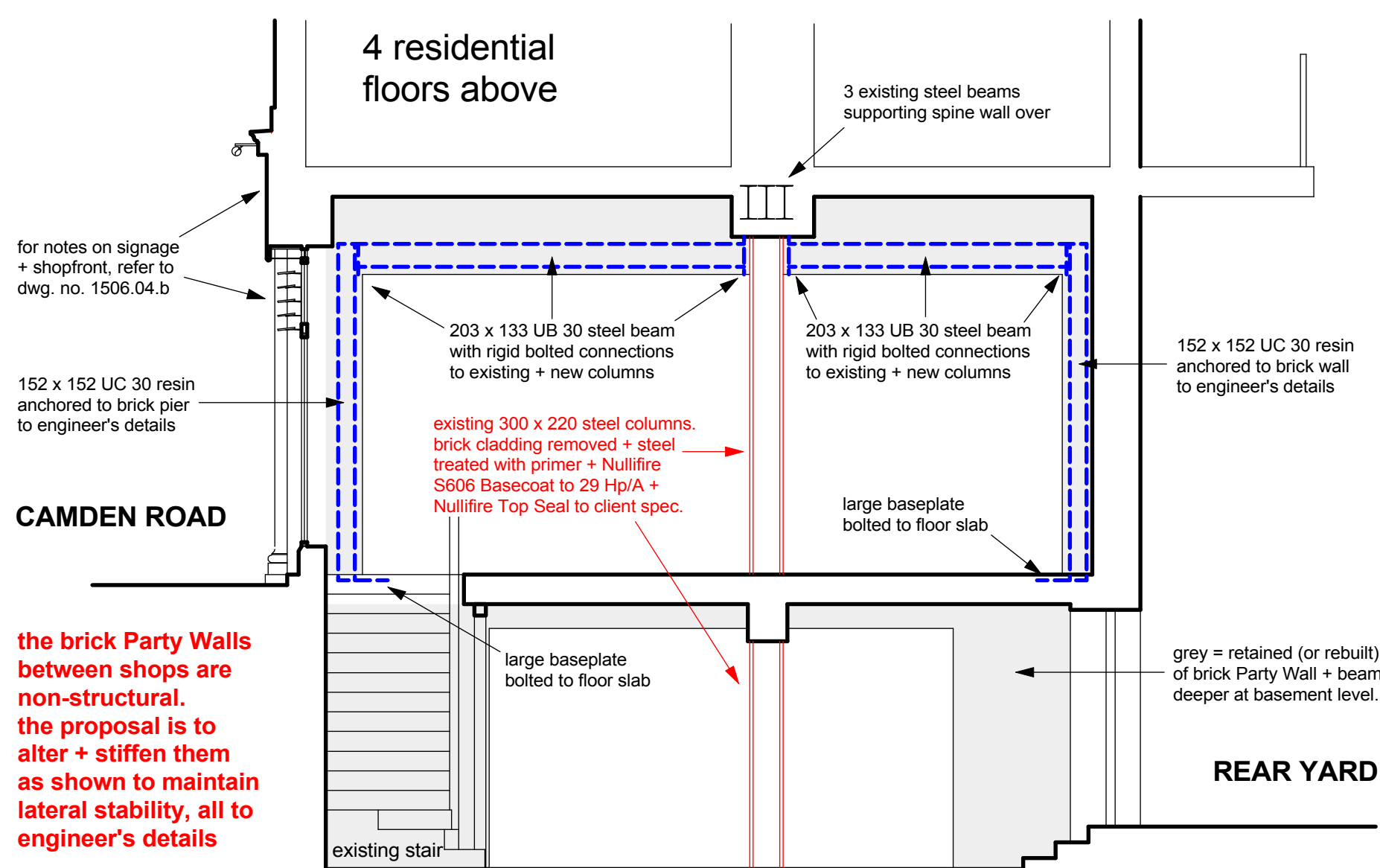
setting out of lighting + power outlets varies according to the variable retail layout, so these items are not shown on this plan

the following items are to be added to the existing systems in place within the Leyland SDM shop at nos. 9-15, which will be upgraded as required:

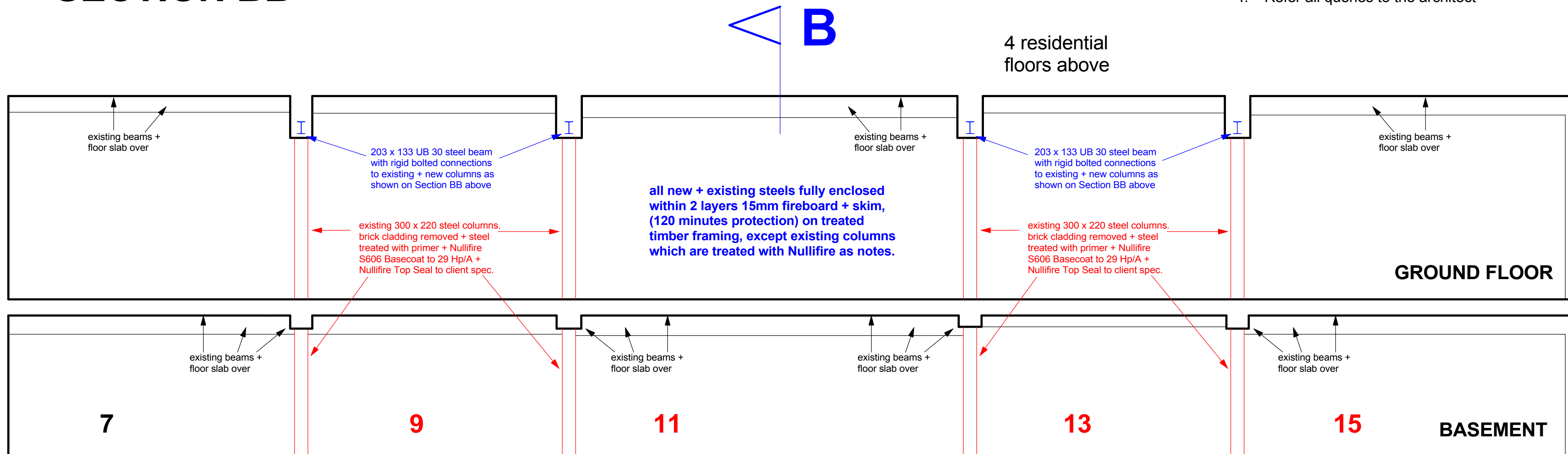
- S** white smoke detectors connected to existing fire alarm and to alarm sounders
- h** white heat detector connected to existing fire alarm and to alarm sounders
- +** fire alarm call point and fire action sign
- FA** additional white fire alarm sounder connected to existing system - normally at ceiling level but see notes on drawing.
- FA** staff fire action sign
- FE** internally lit fire exit sign (+ direction arrow where necessary)
- FD** half hour (or as marked) fire resisting and self-closing door with view panel (except cup'ds), marked "Keep shut"
- FD** staff alert bell at high level in basement kitchen
- HW** instantaneous hot water heaters to w.h.b.s
- spur** electrical spurs at high level in ceiling for extract fans
- e** new standard surface-fixed or chain-hung emergency light connected to existing systems

notes:

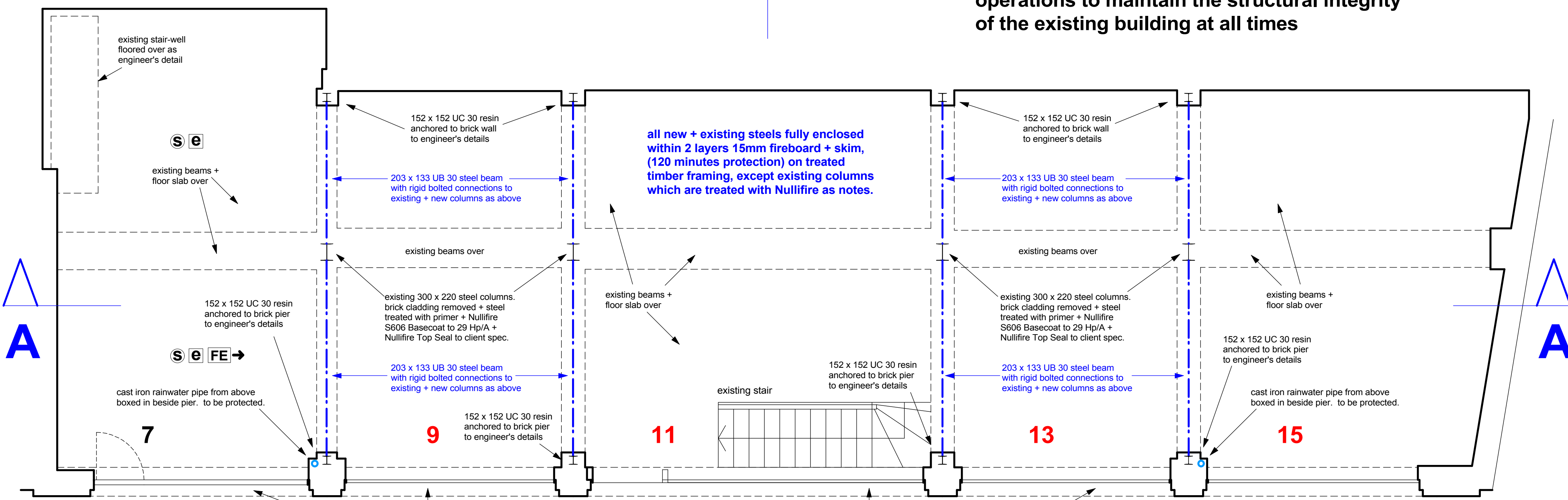
1. Do not scale off this drawing.
2. Refer to notes on survey dwg.no. 1506.01.a
3. Refer to structural engineer's dwgs + calcs.
3. Check all dimensions on site.
4. Refer all queries to the architect



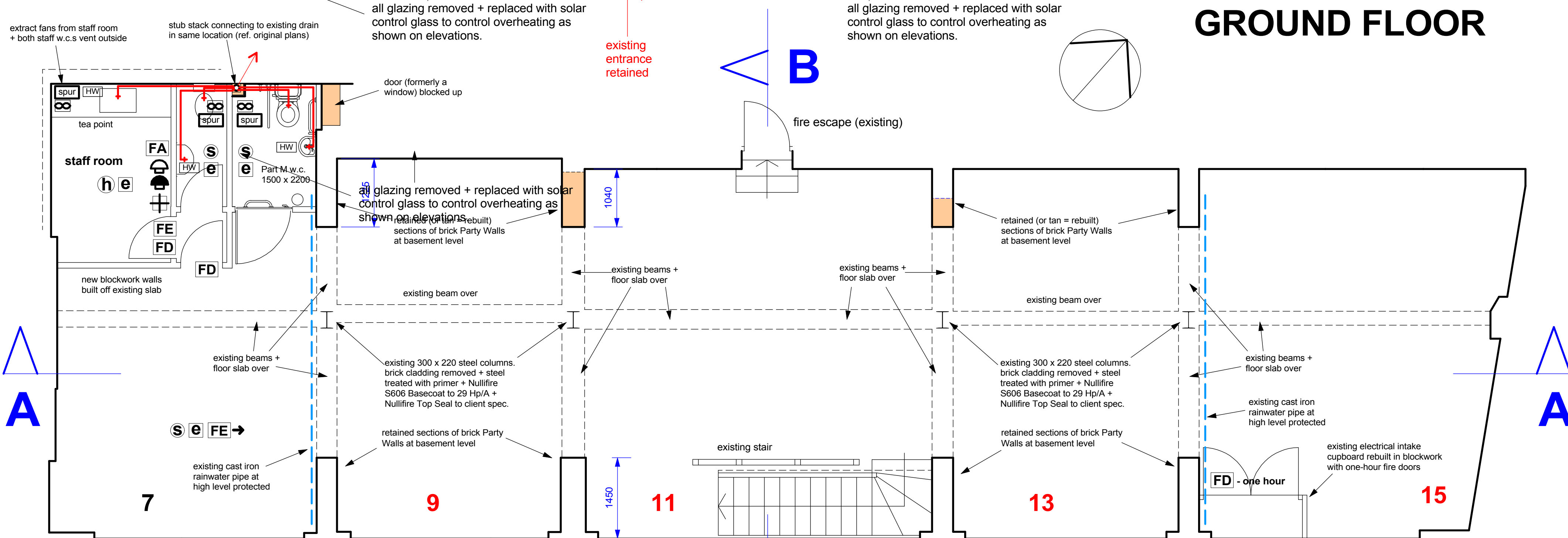
**SECTION BB**



**SECTION AA**



**GROUND FLOOR**



**BASEMENT**

0 5  
Scale: 1.50 at A1 + 1.100 at A3