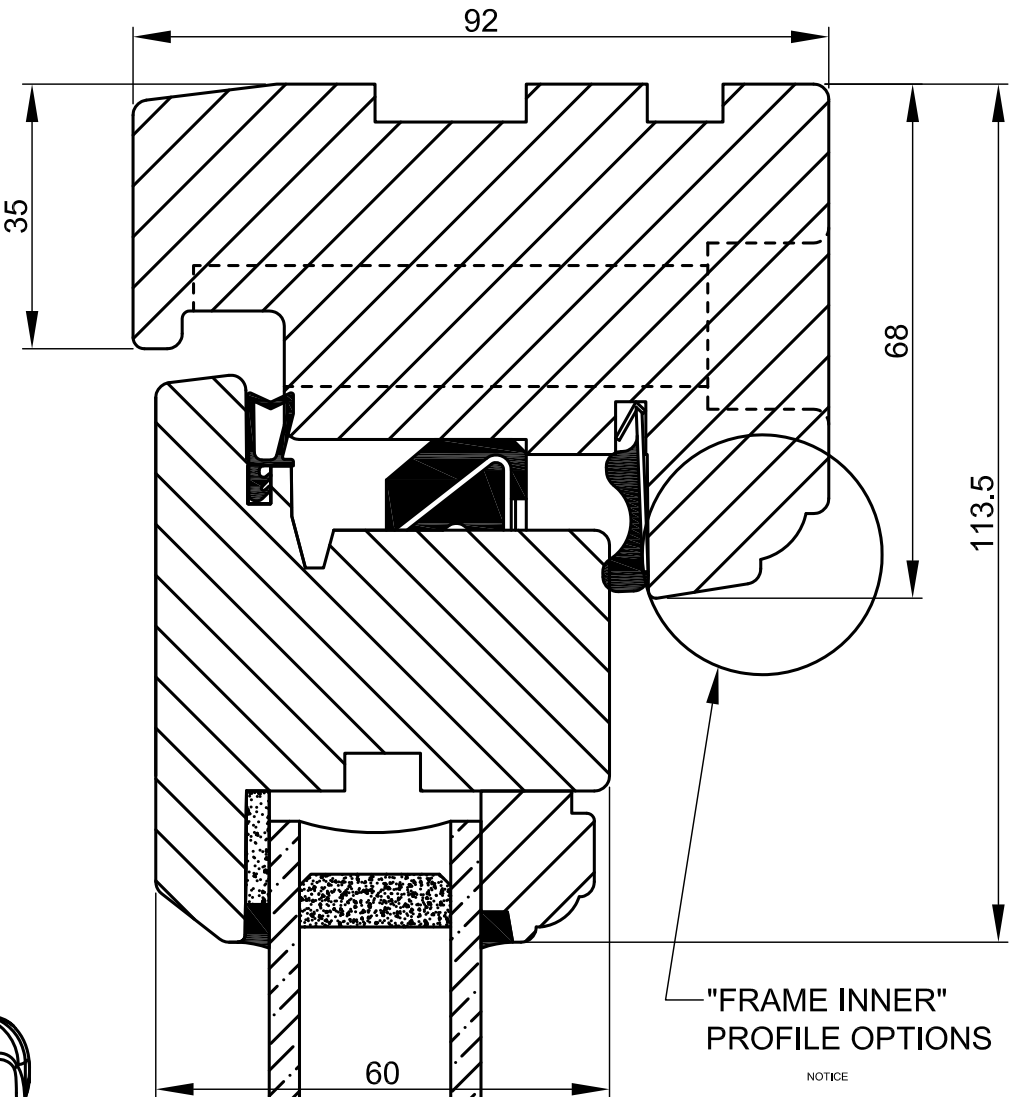
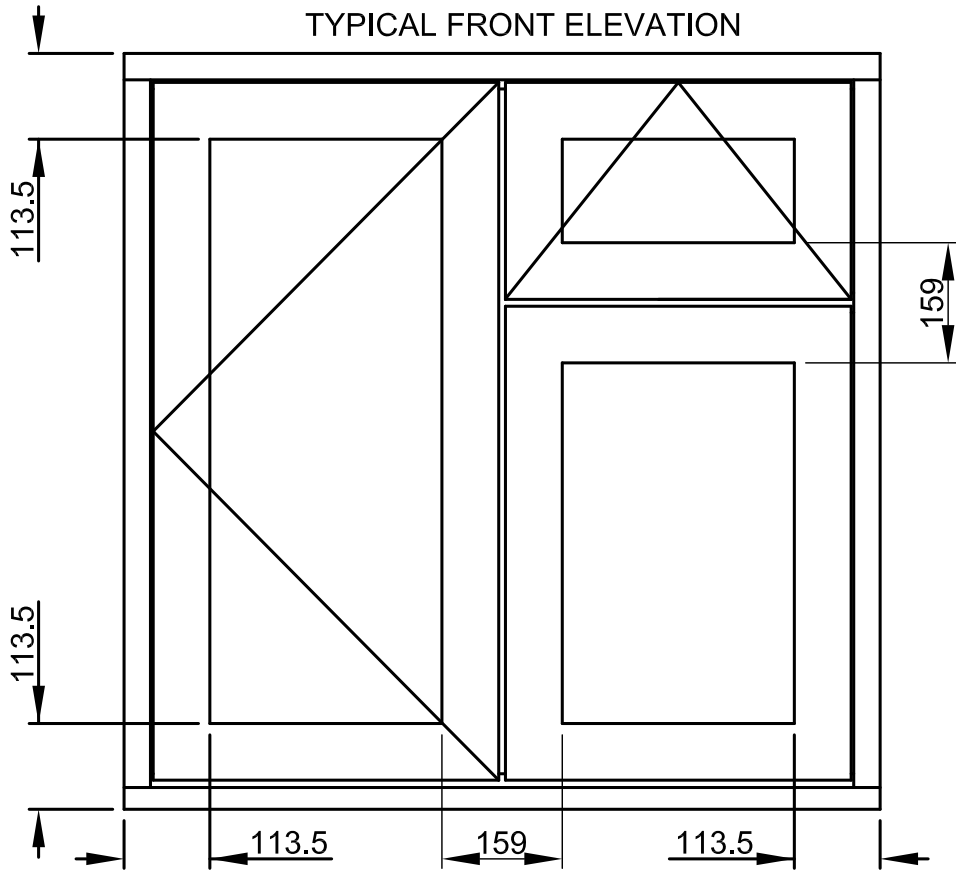


TYPICAL FRONT ELEVATION



"FRAME INNER" PROFILE OPTIONS

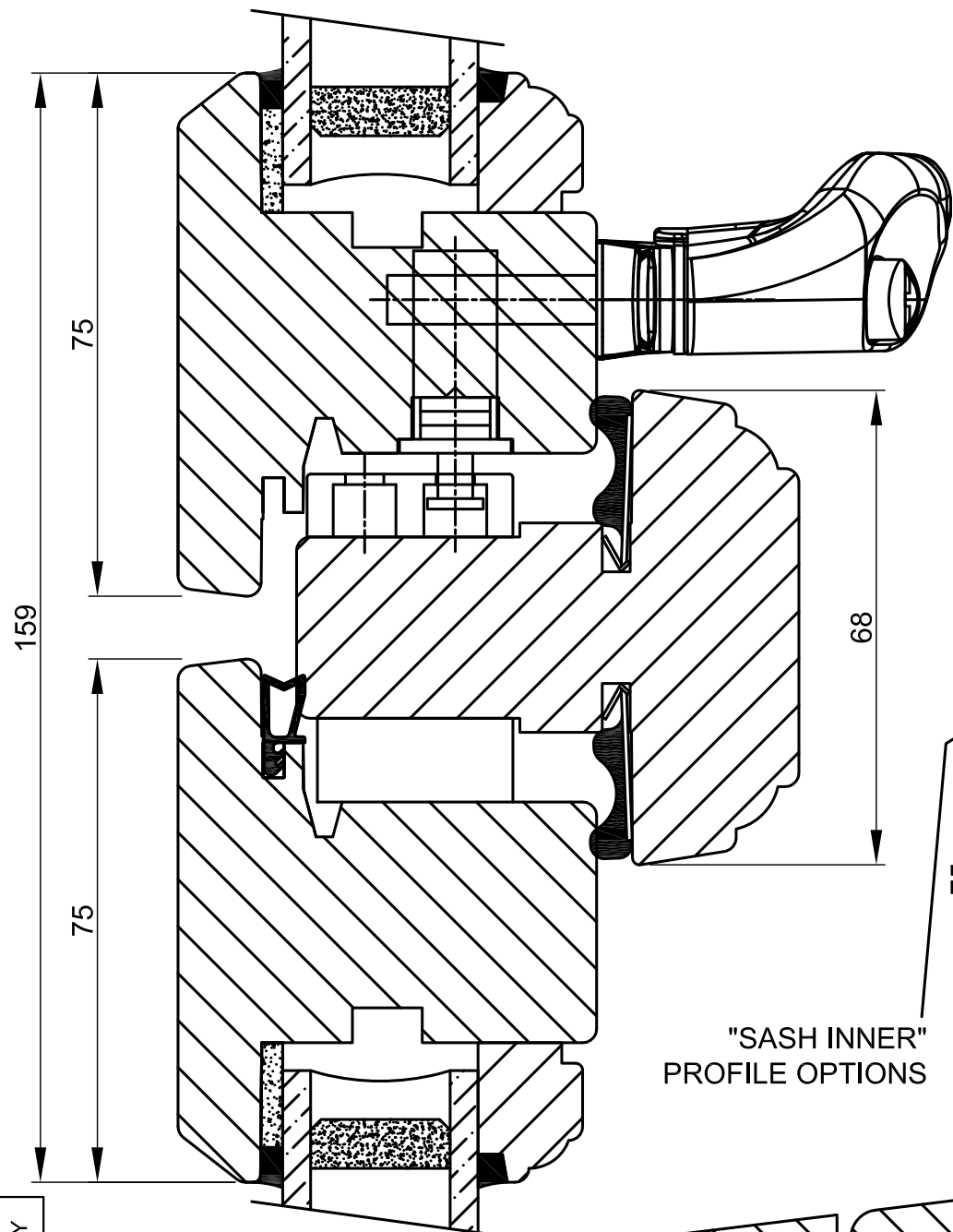
NOTICE

THIS DRAWING WAS PREPARED BY ARDEN GROUP LTD (THE COMPANY) AND THE COPYRIGHT IN THE DRAWING AND THE DESIGN OF THE ITEM(S) DEPICTED BELONG TO THE COMPANY. ALL RIGHTS RESERVED BY LAW (INCLUDING RIGHTS UNDER INTERNATIONAL COPYRIGHT CONVENTIONS) ARE RESERVED TO THE COMPANY. THIS DRAWING MAY ALSO INCORPORATE INFORMATION WHICH IS CONFIDENTIAL TO THE COMPANY.

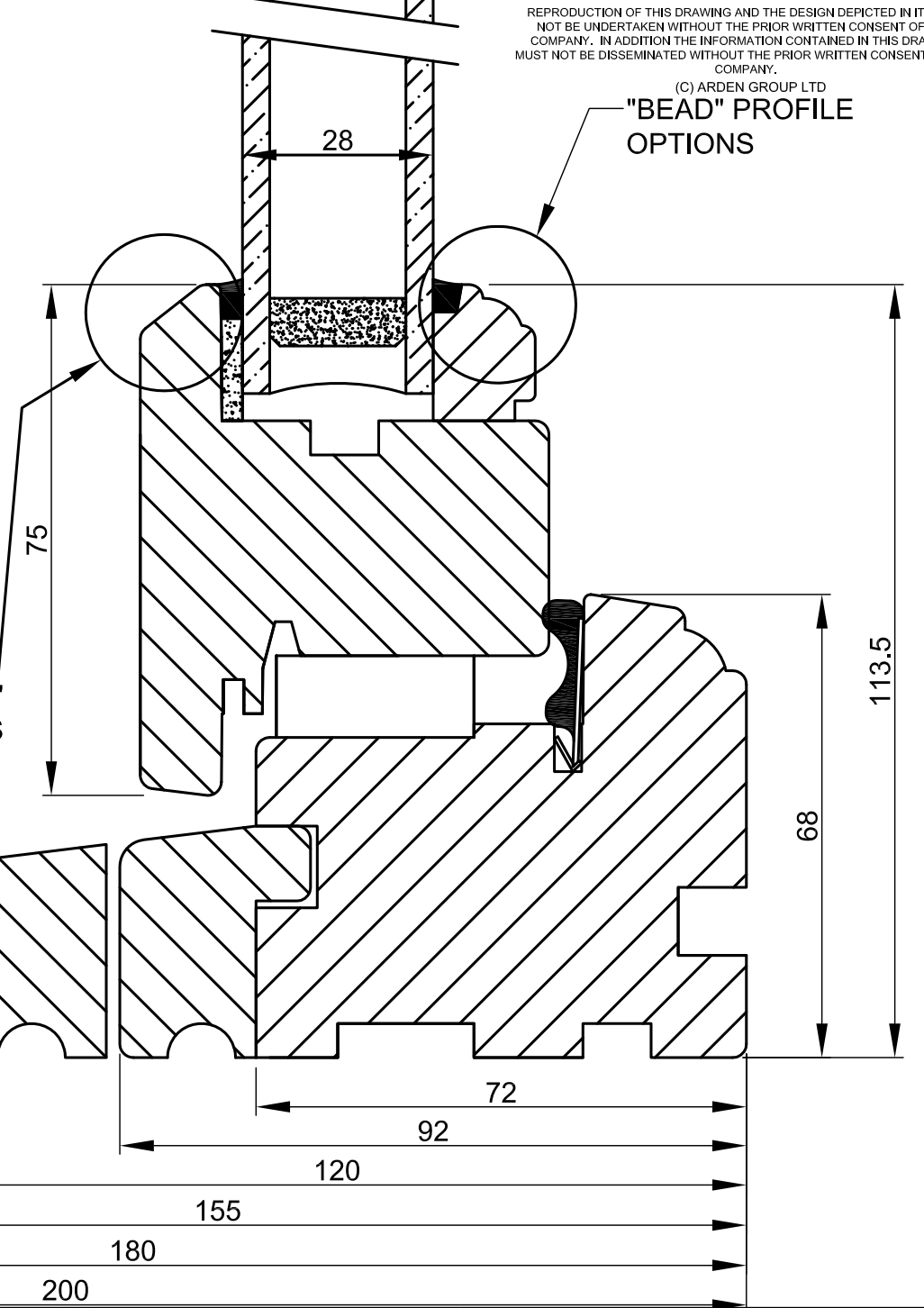
REPRODUCTION OF THIS DRAWING AND THE DESIGN DEPICTED IN IT MUST NOT BE UNDERTAKEN WITHOUT THE PRIOR WRITTEN CONSENT OF THE COMPANY. IN ADDITION THE INFORMATION CONTAINED IN THIS DRAWING MUST NOT BE DISSEMINATED WITHOUT THE PRIOR WRITTEN CONSENT OF THE COMPANY.

(C) ARDEN GROUP LTD

"BEAD" PROFILE OPTIONS



"SASH INNER" PROFILE OPTIONS



SILICONE ADDED/GASKET REMOVED 75MMSASH + 68MM MULLION/TRANSOM.	PH	BY
	02.01.13	DATE
A	REV	

Arden Windows Ltd,
Arden House,
Sparkbrook Street, Coventry CV1 5ST.
Tel. 02476 623423
Fax. 02476 237317
www.ardenwindows.net

DETAIL
HATHAWAY INTERNALLY BEADED
VERTICAL CROSS SECTION DETAIL
PUTTYLINE EXTERNAL PROFILE

Drawn By RGT	Approved By PH	Dated 21/07/09
------------------------	--------------------------	--------------------------

DRG No AW HATHAWAY ASSY	
SHEET 06	Issue 1st
SCALE A3 - 1:1 A4 - NTS	