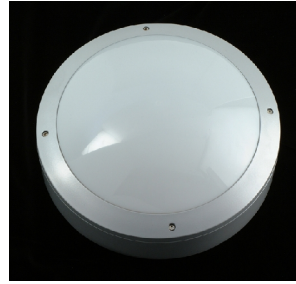


XANTHOS 1

XANTHOS 1 is an IP rated exterior fitting available in two diameters of 265mm and 360mm. **XANTHOS** is available in black, white or aluminium finish and has a variety of vandal resistant front cover options. High frequency control gear is offered as standard and the cover is UV stabilised polycarbonate. **XANTHOS** is also designed to IP65 and all versions are available as integral emergency except the 55W T5 option. An optional photo cell can also be included if required.



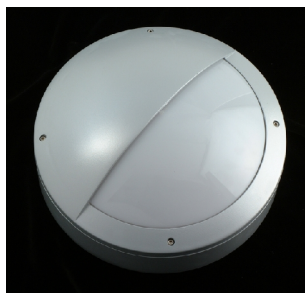
Black open faced



Aluminium open faced



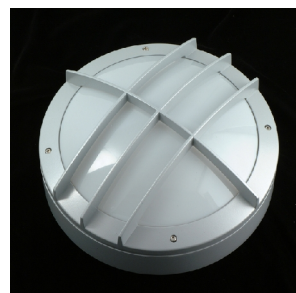
Black with hood



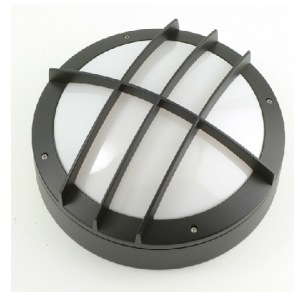
Aluminium with hood



Black with x bar



Aluminium with 3 bar grille



Black with 3 bar grille

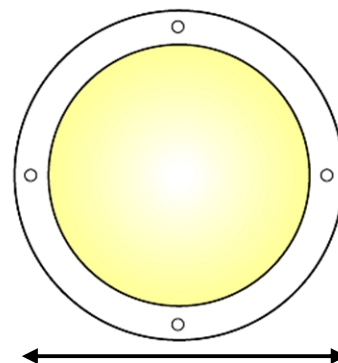
APPLICATIONS

- Outdoor areas
- Fire escapes
- Walkways
- Building exteriors
- Schools
- Hospitals
- Police stations

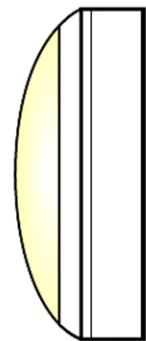
FEATURES / SPECIFICATION

- Di-cast aluminium housing
- 4 front cover options
- UV stabilised diffuser
- Vandal resistant polycarbonate diffuser
- Optional photo cell
- 3 colour finish options
- Optional tamper resistant screws

DIMENSIONS



Size 265 = 265mm o/a diameter
Size 360 = 360mm o/a diameter



Size 265

Open = 105mm
Hood = 125mm
Grille = 125mm
X bar = 155mm

Size 360

Open = 145mm
Hood = 170mm
Grille = 170mm
X bar = 220mm

PART NUMBERS

Denotes **XANTHOS 1** range

Options:

XA1

Denotes control gear

Options:

HF = High frequency
DALI = DALI (not 2D)

Denotes size

Options:

265 = 265mm diameter
360 = 360mm diameter

Denotes photo cell

Options:

PC = Photo cell
Omit if not required

XA1 / 16 / HF / BL / 360 / HD / PC / EM

Denotes lamp wattage

Options:

16 = 16W 2D (size 265)
28 = 28W 2D (size 360)
38 = 38W 2D (size 360)
22 = 22W T5 (size 360)
40 = 40W T5 (size 360)
13 = 13W TCDE (size 265)
18 = 18W TCDE (size 265)
26 = 26W TCDE (size 360)
32 = 32W TCDE (size 360)
42 = 42W 2D (size 360)
55 = 55W 2D (size 360)

Denotes colour

Options:

WH = White
BL = Black
AL = Aluminium

Denotes attachment type

Options:

O = Open
HD = Hood
GR = Grille

Denotes emergency type

Options:

EM = Integral emergency
EMST = Integral emergency self-test
Omit if not required