

## SITE REPORT

---

Project:	41-42 Chester Terrace, London NW1
Date of Visit:	23 <sup>rd</sup> April 2015
Surveyor:	John Hoath
Client:	Sherlock Interiors
Reason for Visit:	Sample paint stripping
Inspection area:	South elevation pilaster capital and cornice
Weather:	Fine and Sunny

---

### **1.0 Terms of Engagement:**

To carry out trials of paint stripping to agreed areas, pilaster capital and cornice on the south elevation where current scaffolding access is available.

### **2.0 Observations:**

In order to assess the suitability of a product for effective stripping of the paint to embellishments and ornate enrichments, a variety of proprietary products were tested in various locations. The object being to establish the most suitable for removal of previous paint applications which have obscured the ornate detail on the Roman Cement stucco work.

During the trials it was observed that there were a multitude of paint types built up in layers possibly from the original lime based colour wash. It was observed also that a variety of paint types and colours were evident. The latter layers appear to be oil or polymer based or masonry paint. None of which would be particularly breathable.

Bird preventative gel was also present on the upper surfaces of the Acanthus leaves of the capitals, this had been subsequently covered with a paint system, which has made this system ineffective.

Previously a product was known to have been used, several years ago, to prevent bird nesting, a typical product of the era was known as "Hot Foot".

Within these parameters it was hoped to identify a product which would allow effective removal of the paint layers, whilst causing minimal damage to the underlying substrate.



**South Elevation Capital prior to application.**

### 3.0 Application

Sample	Area	Component	Product	Notes
1	Pilaster Capital	Volute/fleuron	Tavec 201	Little effect after dwell time
2	Pilaster Capital	Lower leaf	Kling Strip	No effect after dwell time
3	Pilaster Capital	R H side upper leaf	PS Acrylic	No effect at all
4	Pilaster Capital	RH side lower leaf	PS Poly/alkyd	Slight effect after dwell time
5	Soffit	Rosette	RNB 710	Moderate affect after dwell time
6	Soffit	8 <sup>th</sup> Modillion	PS Poly/alkyd	Extremely effective after dwell time
7	Soffit	7 <sup>th</sup> Modillion	Tavec 201	Little effect after dwell time
8	Soffit	6 <sup>th</sup> Modillion	Strippers 4F	Little effect after dwell time

#### Sample 1



#### Sample 2

Sample 3



Sample 4

**Sample 5****Sample 6****Sample 7****Sample 8**

Application of chemical paint softeners

#### **4.0 Conclusion.**

The products were applied to the various components with a brush and covered with polythene for 4 hours so as to prevent moisture escaping too quickly.

Following which a variety of implements such as spatulas were used to remove the softened paint where possible. This was followed by rinsing off with cold water pressure washing.

It was noted that in the areas where the pigeon gel was used, there was no effect from the paint softener.

Most of the products used would be successful to a greater or lesser degree depending upon longer dwell times. The pigeon gel could be removed with the aid of super-heated water, (steam), the ease and effectiveness of the paint stripping products would also be enhanced by the use of steam.



**Most effective trial result sample 6**

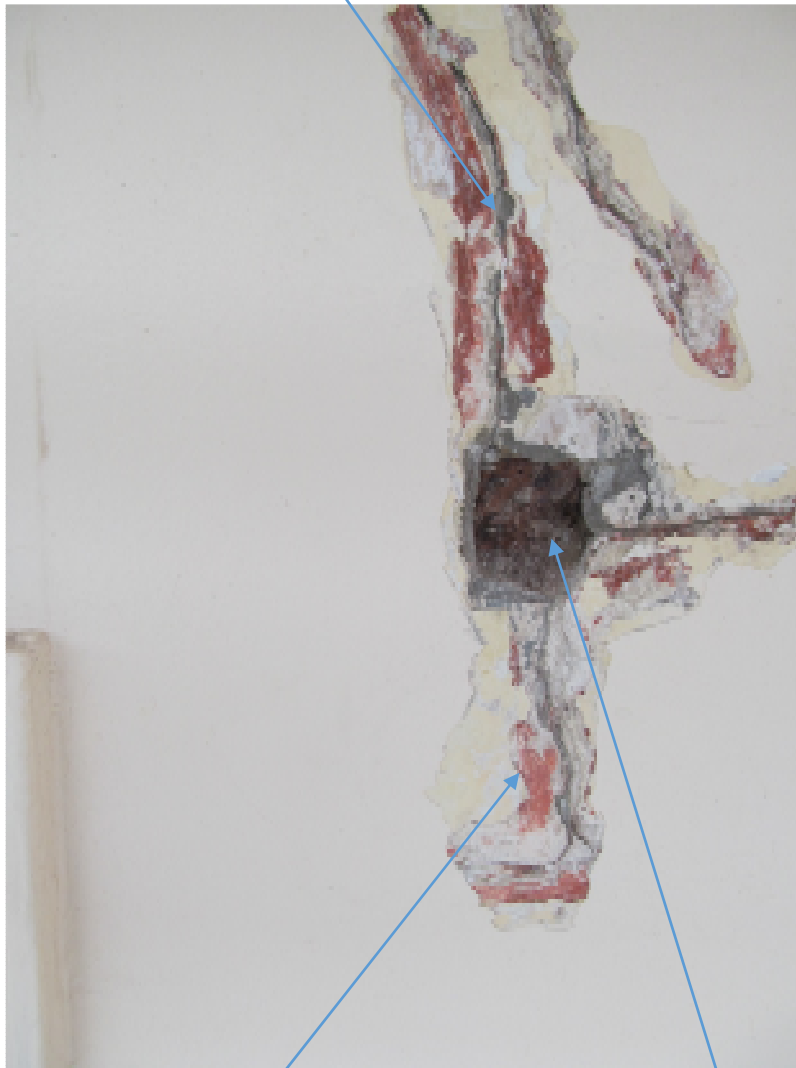
During this trial it was noted that the most effective paint stripping sample was carried out on the 8<sup>th</sup> Modillion bracket using PS Poly/Alkyd softener.

Other product had varying degrees of success, most notably the product used on the soffit rosette, RNB 710, which would have benefited from a longer dwell time and use of super-heated water.

A sample of stucco render was taken from the upper storey on the south elevation, where loose and cracking was evident.

This is to be sent for analysis for the future repairs.

**Cracking which had been over filled with proprietary filler**



**Evidence of previous paint colours**

**Sample of loose render removed for analysis**

**List of products used.**

<b>Product</b>	<b>Supplier</b>
Tavec 201	Tensid
Kling Strip	Strippers Ltd
Stripper 4F	Strippers Ltd
PS Acrylic	Restorative Techniques
PS Poy/Alkyd	Restorative Techniques
RNB 710	Stonehealths