

Residential Areas

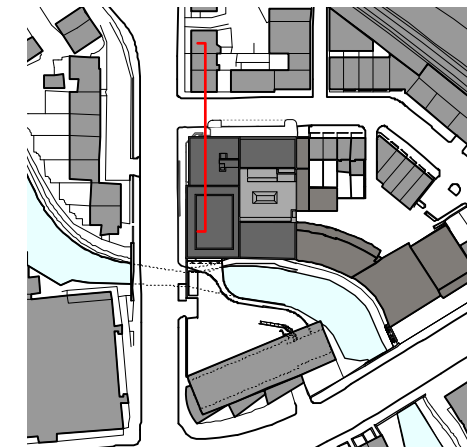
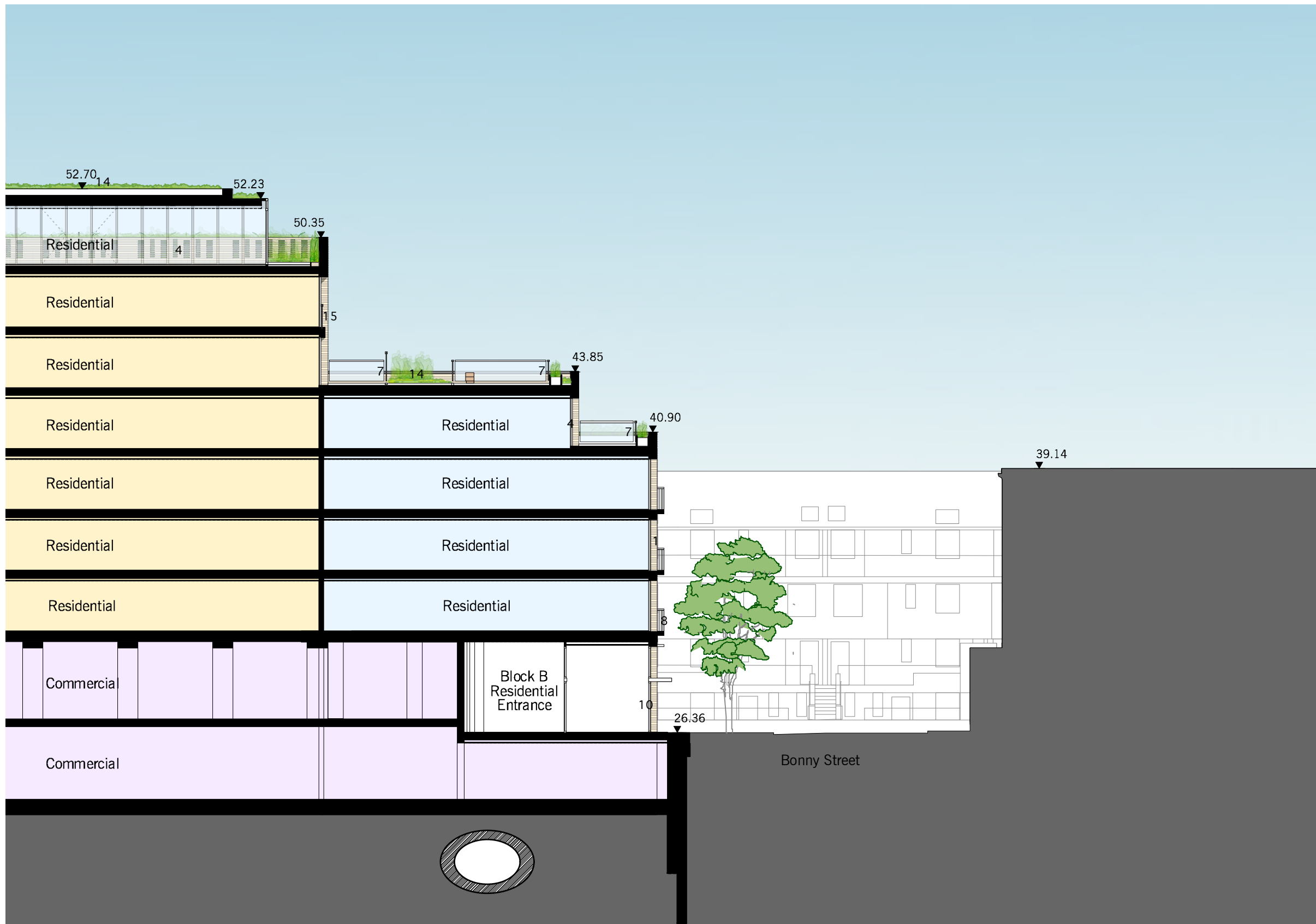
- Private Residential
- Intermediate Housing
- Social Rented

Commercial & Communal Area

- Commercial Area
- Communal Areas

- Rev.B 15/05/2015:
- 1) Block B frontage set back
 - 2) Block B set back from Bonny Street
 - 3) Internal alterations
 - 4) Unit removed on block B

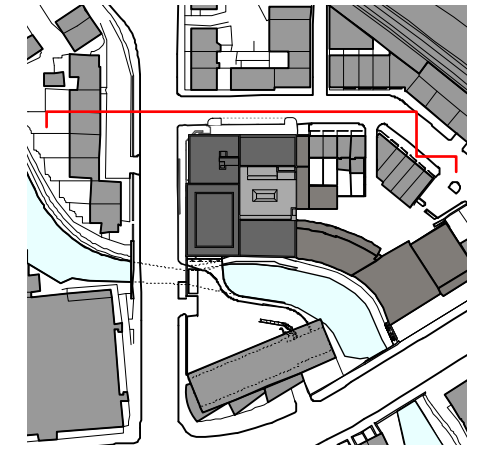
- Rev.D 22/06/2015:
- 1) Block B: Terrace revised
 - 2) Block B: Internal alterations



Materials:

- 1) Brick façade
- 2) Glazed terracotta panels
- 3) Rendered façade with external wall insulation system
- 4) Powder coated composite windows
- 5) Laser Cut metal gates.
- 6) Bronze coloured metal glazed screen
- 7) Translucent glass balustrade
- 8) Metal railing balustrade
- 9) Glazed roof access
- 10) Glass door (residential entrance)
- 11) Glazed double door (office entrance)
- 12) Metal facade cladding
- 13) Sliding metal screens
- 14) Biodiverse Green Roof
- 15) Juliet balcony
- 16) Green Wall

Proposed Section EE



Materials:

- 1) Brick façade
- 2) Glazed terracotta panels
- 3) Rendered façade with external wall insulation system
- 4) Powder coated composite windows
- 5) Laser Cut metal gates.
- 6) Bronze coloured metal glazed screen
- 7) Translucent glass balustrade
- 8) Metal railing balustrade
- 9) Glazed roof access
- 10) Glass door (residential entrance)
- 11) Glazed double door (office entrance)
- 12) Metal facade cladding
- 13) Sliding metal screens
- 14) Biodiverse Green Roof
- 15) Juliet balcony
- 16) Green Wall

Rev.C 15/05/2015:

- 1) Block B profile revised
- 2) Commercial main entrance revised
- 3) Colour of Block A & B changed
- 4) Set back top floor to Block A by 1.5m (internal parapet 1.1m)

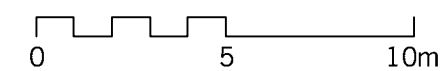
Rev.D 18/5/2015:

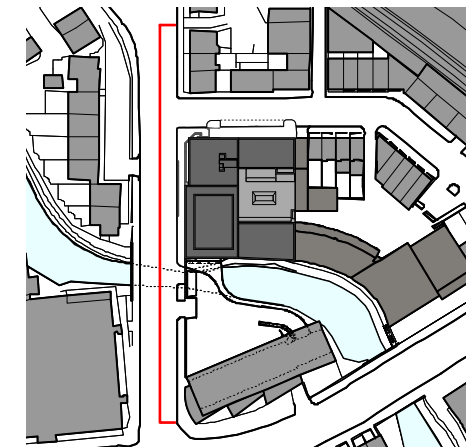
- 1) Facade detailing added to top floor of block A

Rev.D 22/06/2015:

- 1) Block B roof revised

Proposed North Elevation
(Bonny Street View)



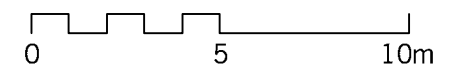


Materials:

- 1) Brick façade
- 2) Glazed terracotta panels
- 3) Rendered façade with external wall insulation system
- 4) Powder coated composite windows
- 5) Laser Cut metal gates.
- 6) Bronze coloured metal glazed screen
- 7) Translucent glass balustrade
- 8) Metal railing balustrade
- 9) Glazed roof access
- 10) Glass door (residential entrance)
- 11) Glazed double door (office entrance)
- 12) Metal facade cladding
- 13) Sliding metal screens
- 14) Biodiverse Green Roof
- 15) Juliet balcony
- 16) Green Wall

Rev.B 15/05/2015:

- 1) Block B profile revised
- 2) Commercial main entrance revised
- 3) Colour of Block B changed



Rev.C 22/06/2015:

- 1) Block B roof revised
- 2) Block C brick façade revised

Proposed West Elevation
(Camden Street View)