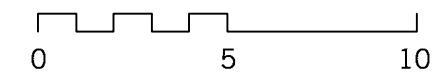
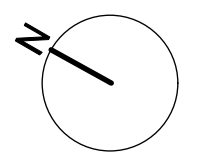
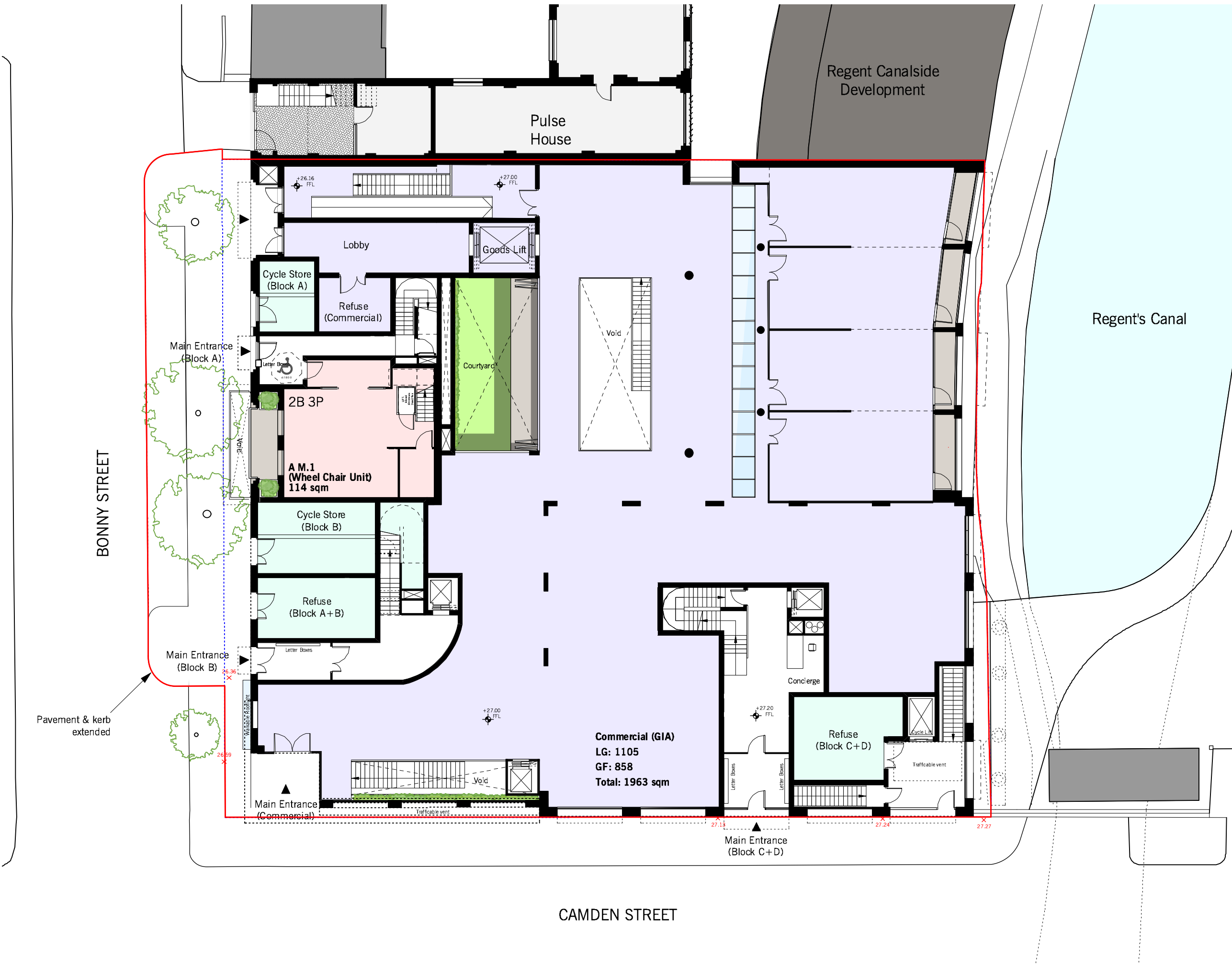


- Residential Areas**
- Private Residential
 - Intermediate Housing
 - Social Rented
- Commercial & Communal Area**
- Commercial Area
 - Communal Areas
 - Substation
- Site Boundary
- Red Line Boundary

Rev.B 15/05/2015:
 1) Lift and stair position revised



Rev.D 22/06/2015:
 1) Lift and stair position revised
 2) Goods lift revised
 3) Showers & Lockers enlarged



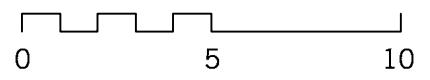
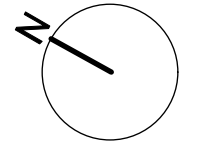
- Residential Areas**
- Private Residential
 - Intermediate Housing
 - Social Rented
- Commercial & Communal Area**
- Commercial Area
 - Communal Areas
- Site Boundary
 — Red Line Boundary

Rev.B 15/05/2015:

- 1) Lift and stair position revised
- 2) Commercial entrance revised

Rev.D 22/06/2015:

- 1) Lift and stair position revised
- 2) Goods lift revised
- 3) Commercial ramp added



Pavement & kerb extended

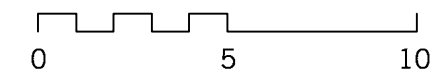
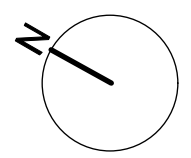


- Residential Areas**
- Private Residential
 - Intermediate Housing
 - Social Rented
- Commercial & Communal Area**
- Commercial Area
 - Communal Areas
- Site Boundary
 Red Line Boundary

Rev.B 15/05/2015:
 1) Block B frontage set back
 2) Internal alterations

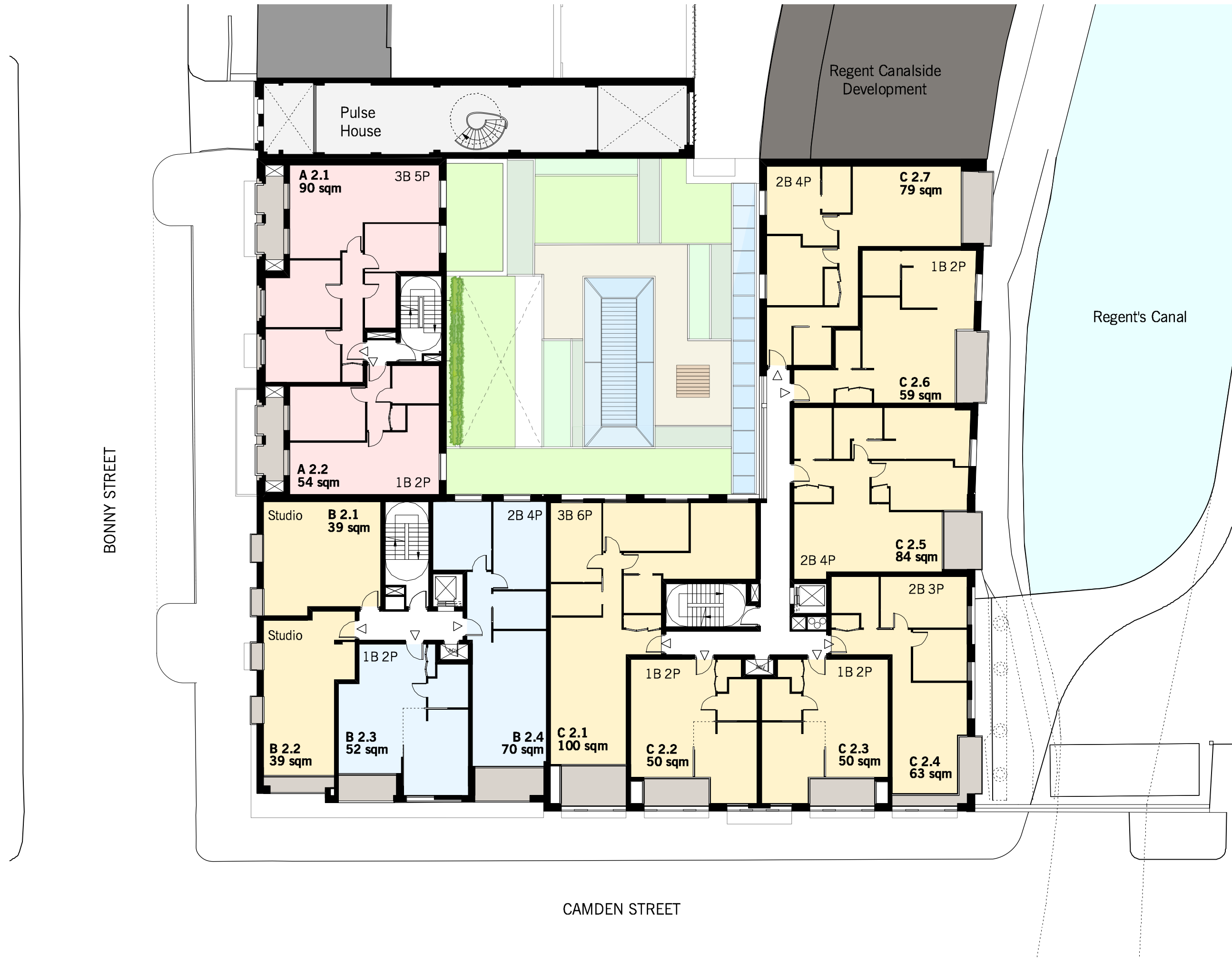
Rev.C 18/05/2015:
 1) Pier added

Rev.D 22/06/2015:
 1) Block A: vertical garden revised
 2) Block B: layout revised



BONNY STREET

CAMDEN STREET

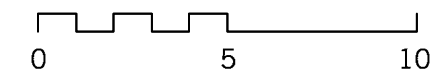
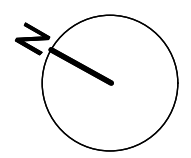


- Residential Areas**
- Private Residential
 - Intermediate Housing
 - Social Rented
- Commercial & Communal Area**
- Commercial Area
 - Communal Areas

Rev.B 15/05/2015:
 1) Block B frontage set back
 2) Internal alterations

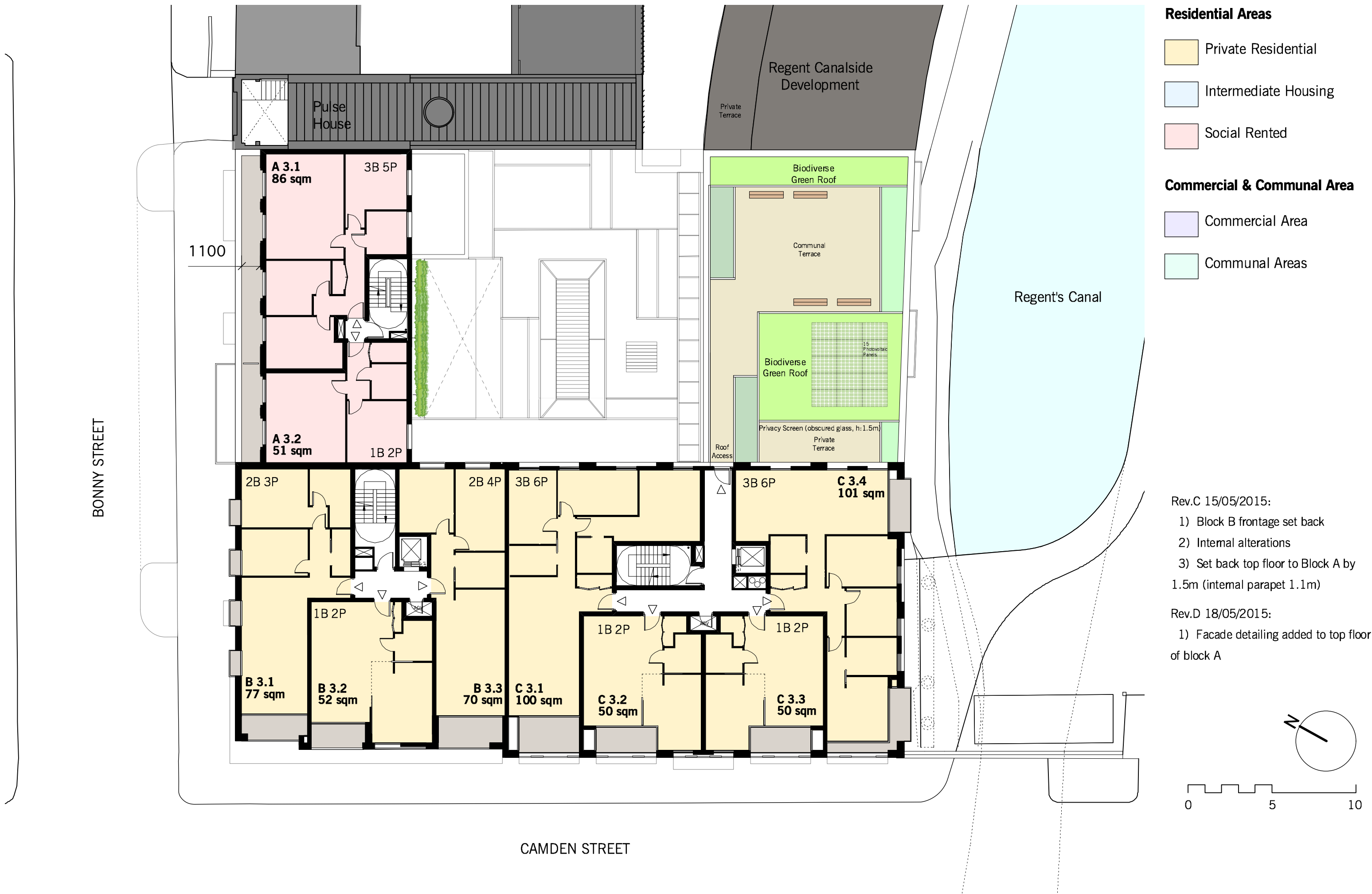
Rev.C 18/05/2015:
 1) Pier added

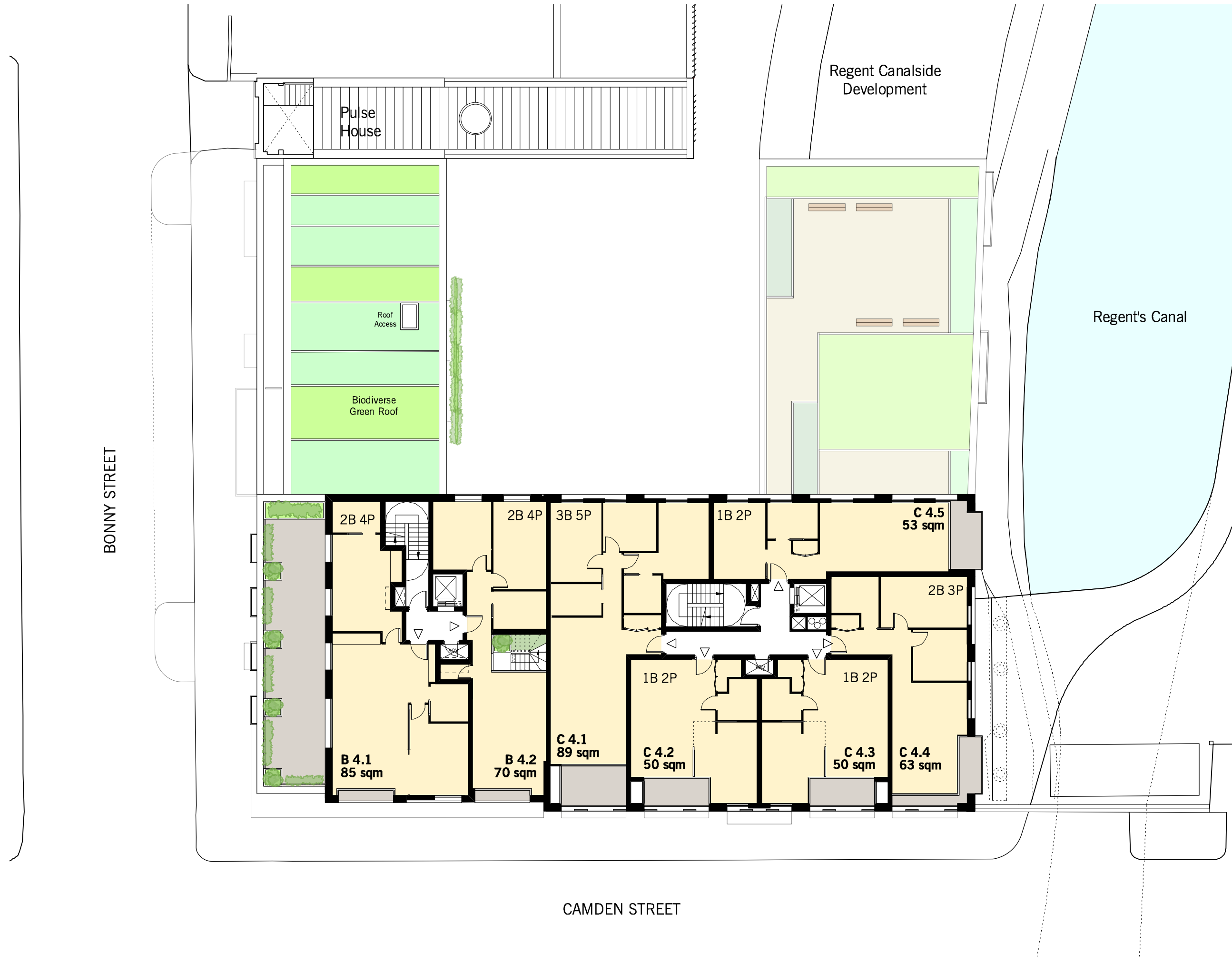
Rev.D 22/06/2015:
 1) Block A: vertical garden revised
 2) Block B: layout revised



BONNY STREET

CAMDEN STREET

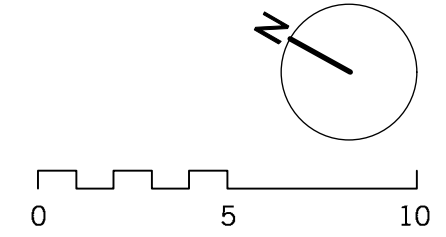


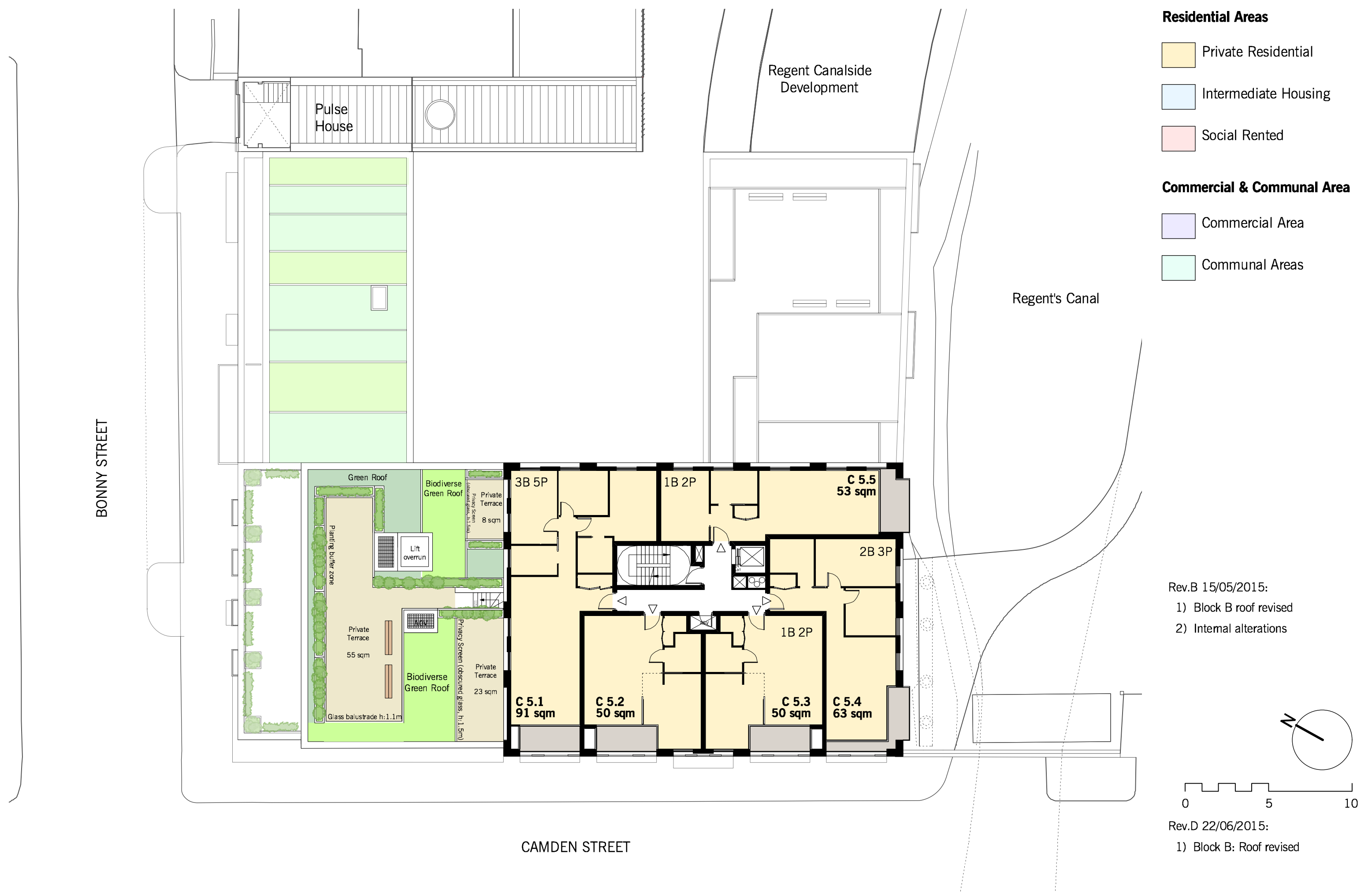


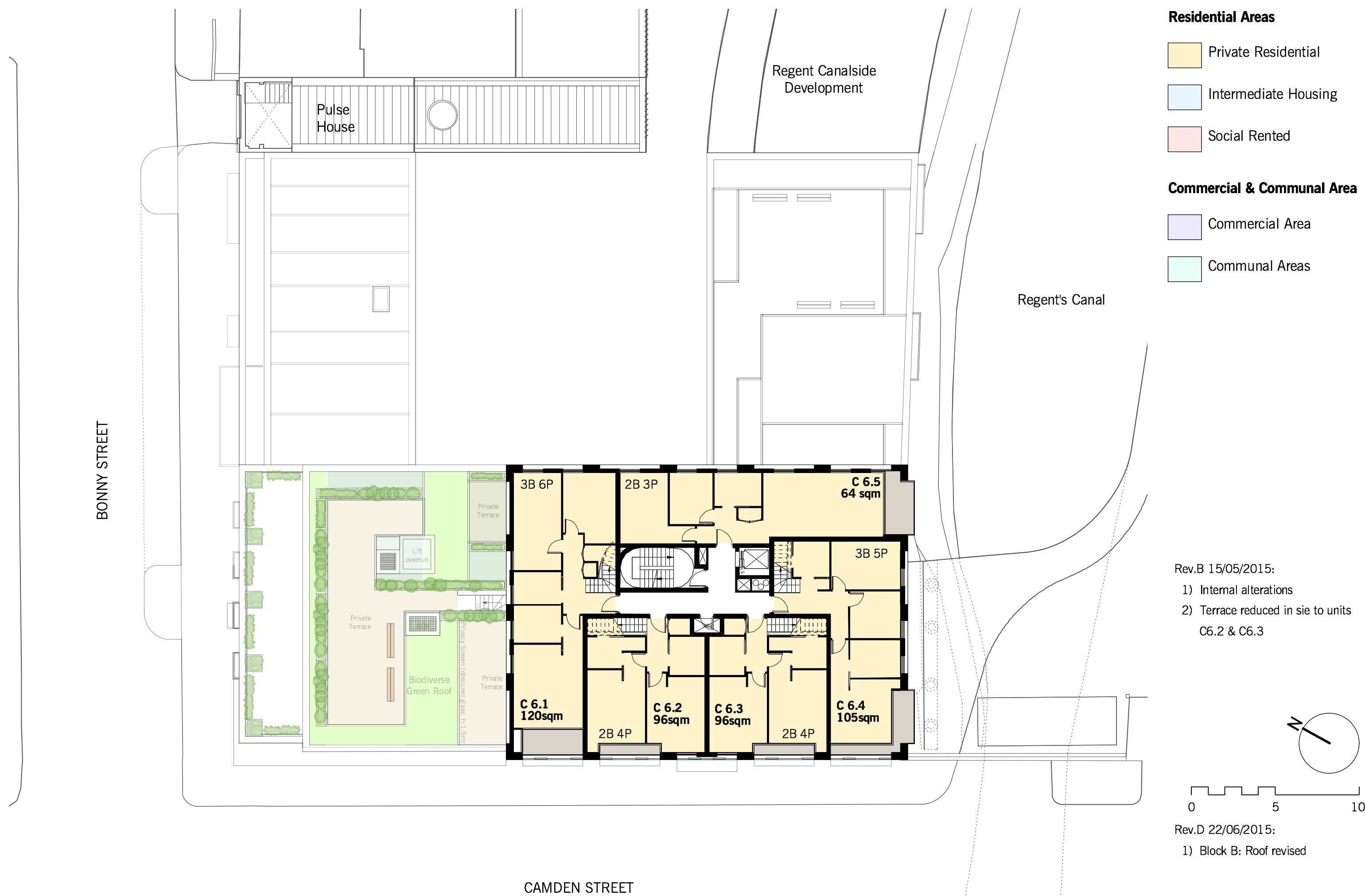
- Residential Areas**
- Private Residential
 - Intermediate Housing
 - Social Rented
- Commercial & Communal Area**
- Commercial Area
 - Communal Areas

- Rev.B 15/05/2015:
- 1) Block B frontage set back
 - 2) Block B set back from Bonny Street
 - 3) Internal alterations
 - 4) Unit removed on block B

- Rev.D 22/06/2015:
- 1) Block B: Terrace revised
 - 2) Block B: Internal alterations



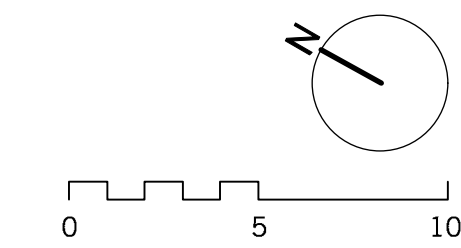




- Residential Areas**
- Private Residential
 - Intermediate Housing
 - Social Rented
- Commercial & Communal Area**
- Commercial Area
 - Communal Areas

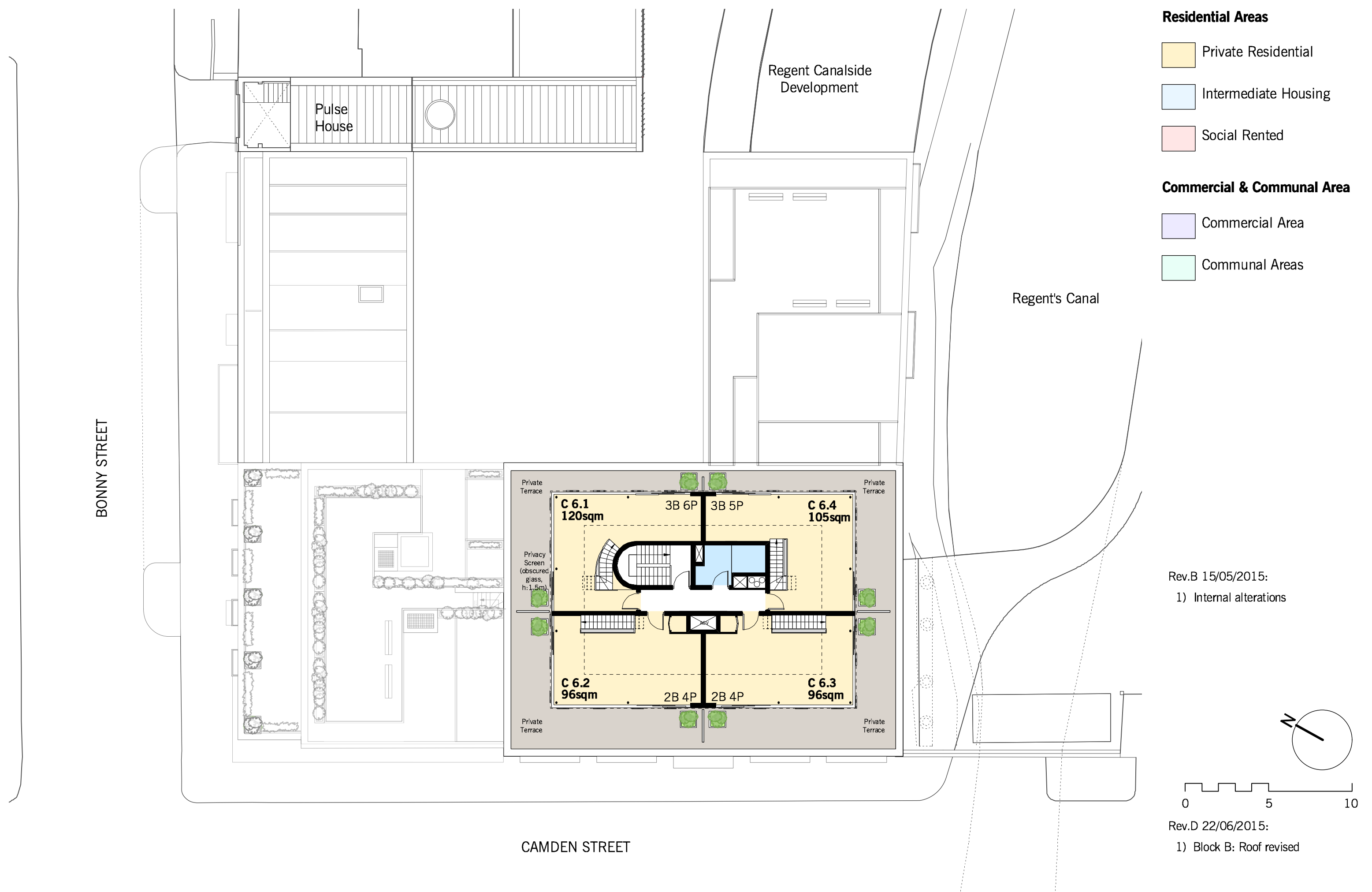
Rev.B 15/05/2015:

- 1) Internal alterations
- 2) Terrace reduced in size to units C6.2 & C6.3



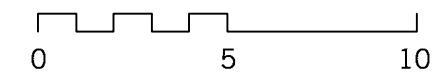
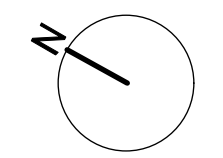
Rev.D 22/06/2015:

- 1) Block B: Roof revised



- Residential Areas**
- Private Residential
 - Intermediate Housing
 - Social Rented
- Commercial & Communal Area**
- Commercial Area
 - Communal Areas

Rev.B 15/05/2015:
1) Internal alterations



Rev.D 22/06/2015:
1) Block B: Roof revised



BONNY STREET

CAMDEN STREET

Regent Canalside Development

Regent's Canal

Rev.B 15/05/2015:
1) Block A & B roof revised

Rev.D 22/06/2015:
1) Block A & B: Roof revised

