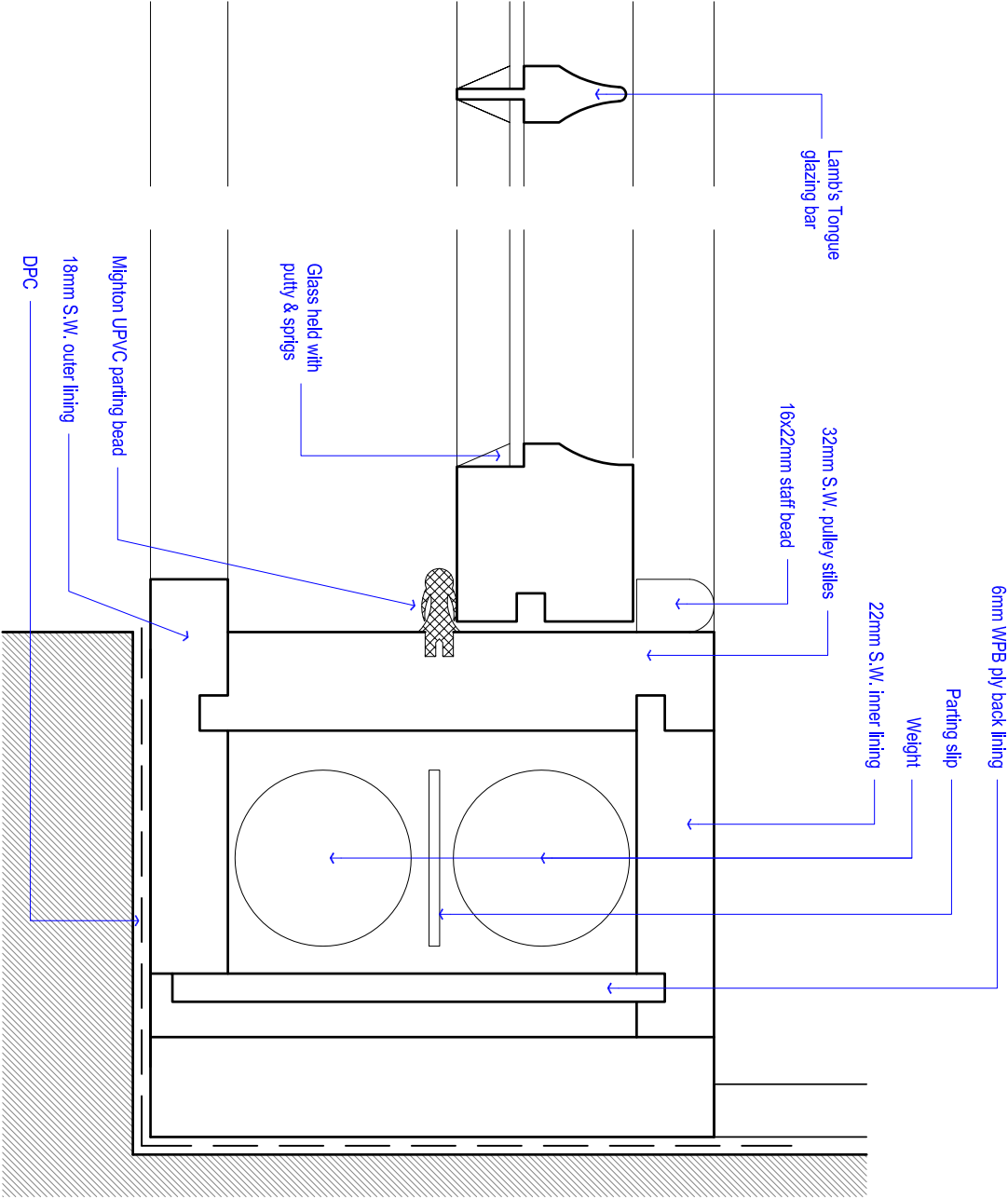
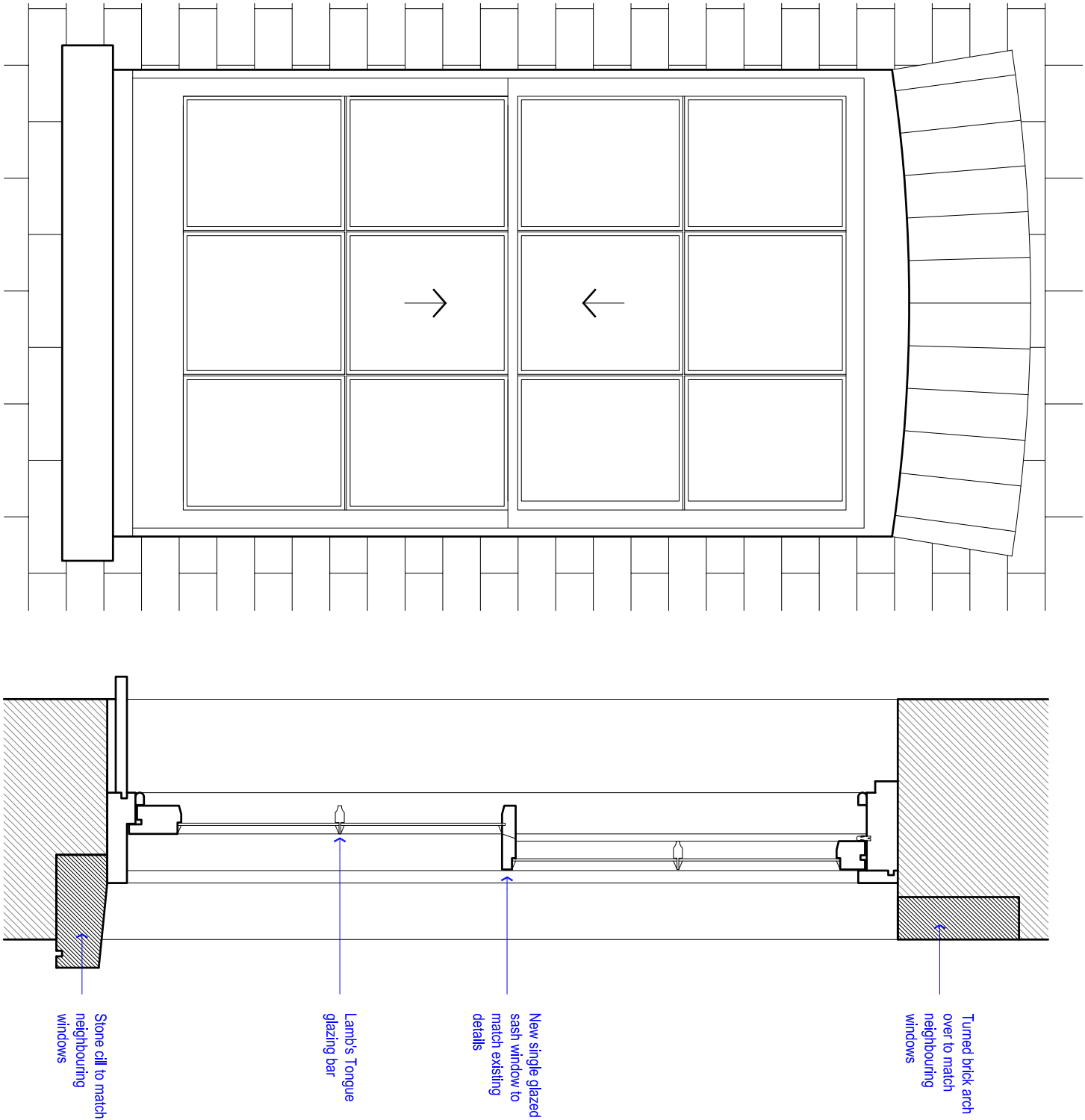
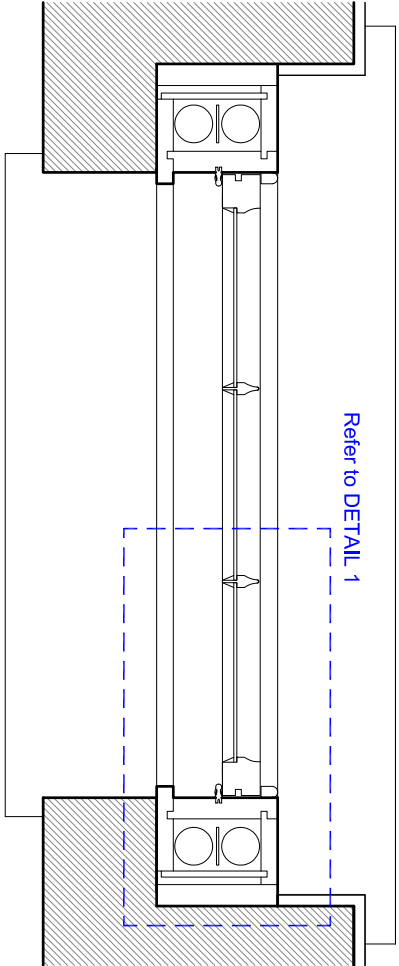


NOTE:
All new joinery, plasterwork etc. to be to correct historical detail. New work to be in accordance with the Building Regulation and to the approval of the Local Authority.



REVISIONS	

NEW SASHES & BARS TO TRADITIONAL DETAILS TO MATCH SASHES/ DETAILS AS RECENTLY APPROVED APPLICATIONS 2014/1798/L & 2014/1760/P (201 ALBANY STREET) ON HALF LANDING TO NEWLY FORMED OPENINGS WITH TURNED BRICK ARCHES.



KERR PARKER ASSOCIATES LTD

THE GRAMARY, COPPID HALL, NORTH STIFFORD, ESSEX RM16 5UE
TEL: 01375-977231

WINDOW DETAILS - REAR ELEVATION

DRAWING
201 Albany Street, London
NW1 4AB

SCALE VARIES @ A3 DATE 01/07/2015
DRAWN AH CHECKED GK
DRAWING NO. K-1530-105 REV. -