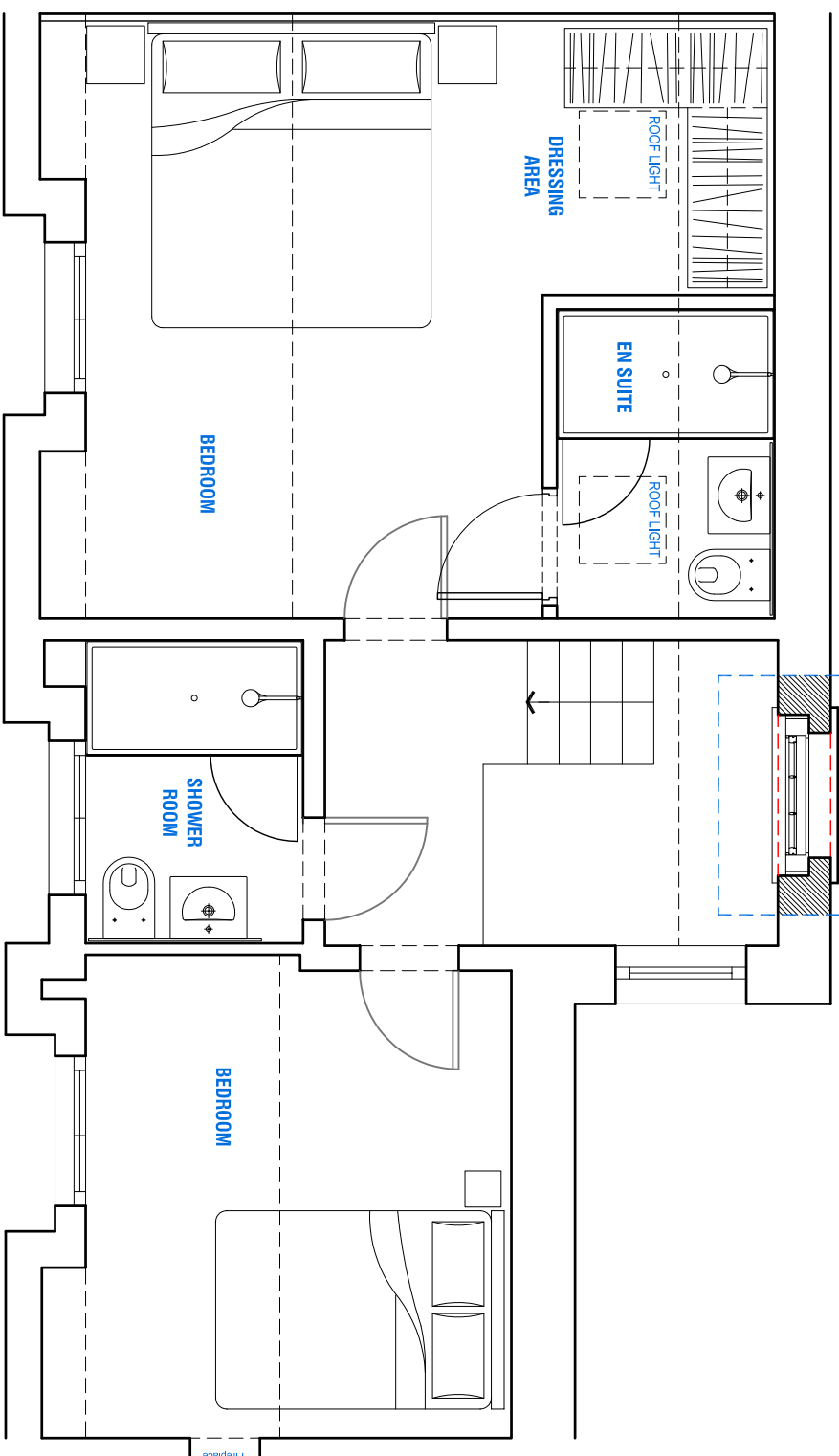
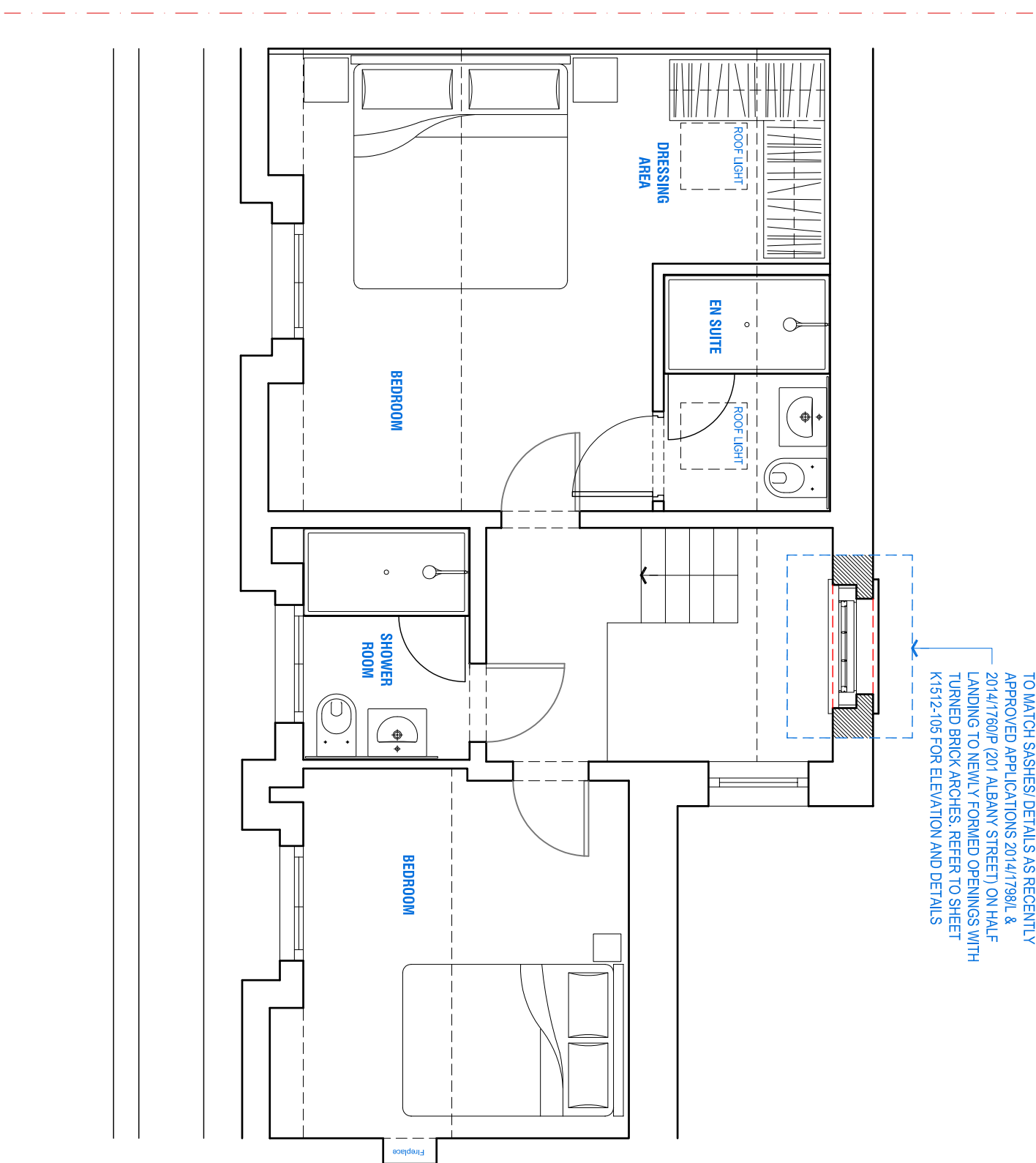
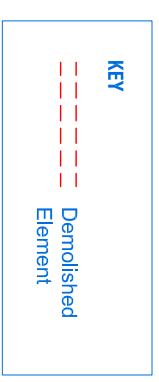


NEW SASHES & BARS TO TRADITIONAL DETAILS
 TO MATCH SASHES/ DETAILS AS RECENTLY
 APPROVED APPLICATIONS 2014/1798L &
 2014/1760P (201 ALBANY STREET) ON HALF
 LANDING TO NEWLY FORMED OPENINGS WITH
 TURNED BRICK ARCHES. REFER TO SHEET
 K1512-105 FOR ELEVATION AND DETAILS



NOTE:
 All new joinery, plasterwork etc. to be to correct historical
 detail. New work to be in accordance with the Building
 Regulation and to the approval of the Local Authority.



REVISIONS

KERR PARKER ASSOCIATES
LTD

THE GRANARY, COPPID HALL, NORTH STIFFORD, ESSEX RM16 5UE
 TEL: 01376-977231

Proposed Third Floor Plan

DRAWING
 201 Albany Street, London
 NW1 4AB

SCALE 1:50 @ A3 DATE 01/07/2015
 DRAWN AW CHECKED GK
 DRAWING NO. K-1530-103 REV.

--

