

Elevation Visuals

Contract No: C09724
 Drawing No: Planning - Rev 1
 (as per Signage Scheme - Rev 6)
 Site Name: Alan Day Volkswagen, Hampstead
 Site Address: 277 Finchley Road, London; NW3 6LT.

Brand:



Architect: John Rowe-Parr Architects
 Architect drawing No:
 PL11-745-011-Rev P4

Building/signage measurements are provided by the architect.

Drawing Scale: 1:200@A3

Standard unit in mm

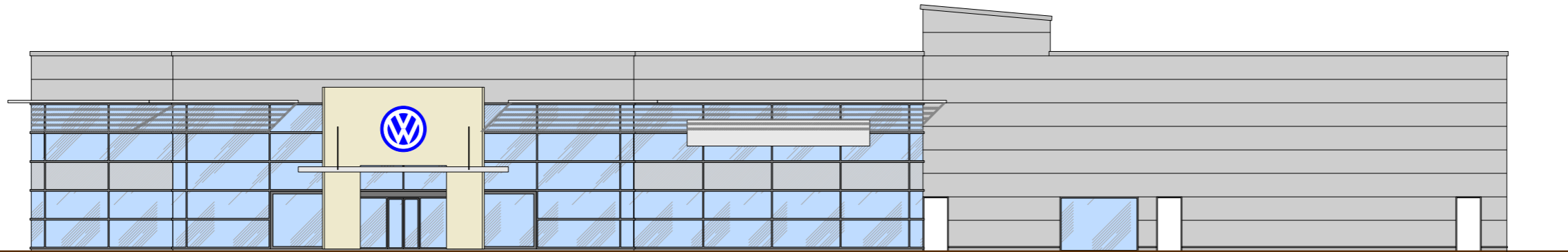
Clovemead contacts:
 Drawings - Ken Fong
 T : 01925 247 771; E : ken.fong@clovemead.co.uk
 Technical - Tony Bennett
 T : 01925 247 809; E : tony.bennett@clovemead.co.uk

Company web site:
 www.clovemead.co.uk

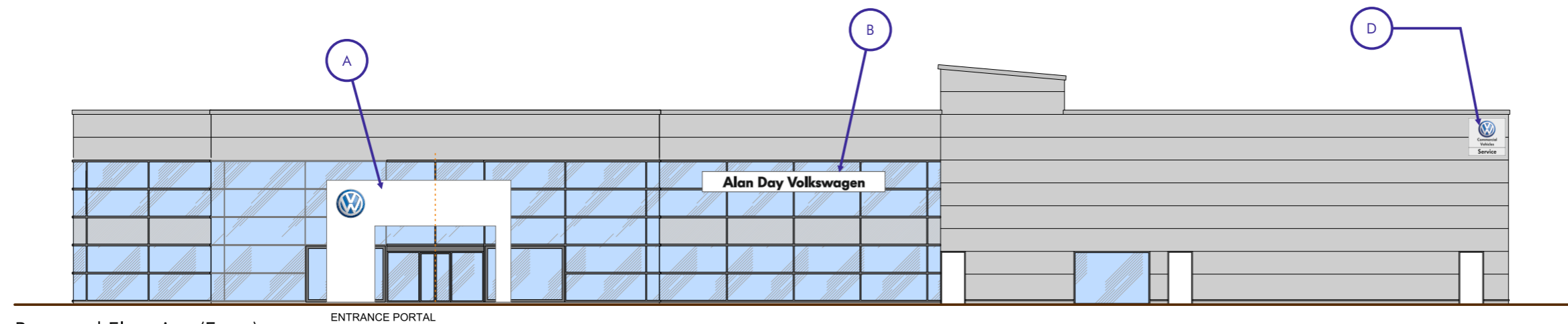


Office address:

Clovemead Limited
 Chapman House, Chester Road, Warrington WA4 6AR
 The details contained within this drawing/pack/design sheet(s) are confidential,
 and the exclusive property of Clovemead Limited. No use, copy or disclosure of
 this drawing(s) may be made without written permission, and is to be returned to
 Clovemead Limited upon request.



Existing Elevation (Front)



Proposed Elevation (Front)

ENTRANCE PORTAL

Alan Day Volkswagen



NOTES

1	11-06-15	As per DP Rev 6.	KF
REV	DATE	DESCRIPTION	BY

DRAWING REVISIONS