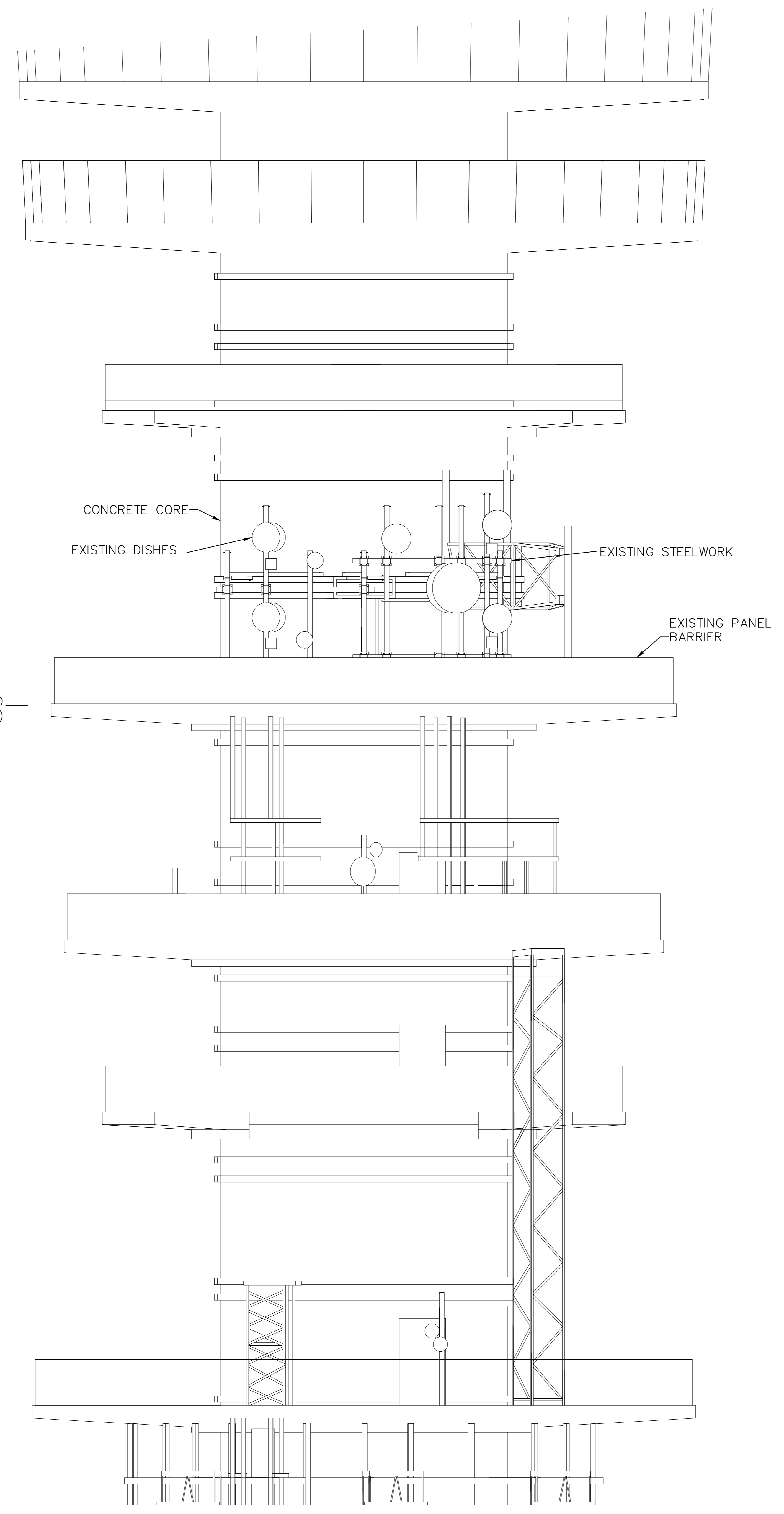
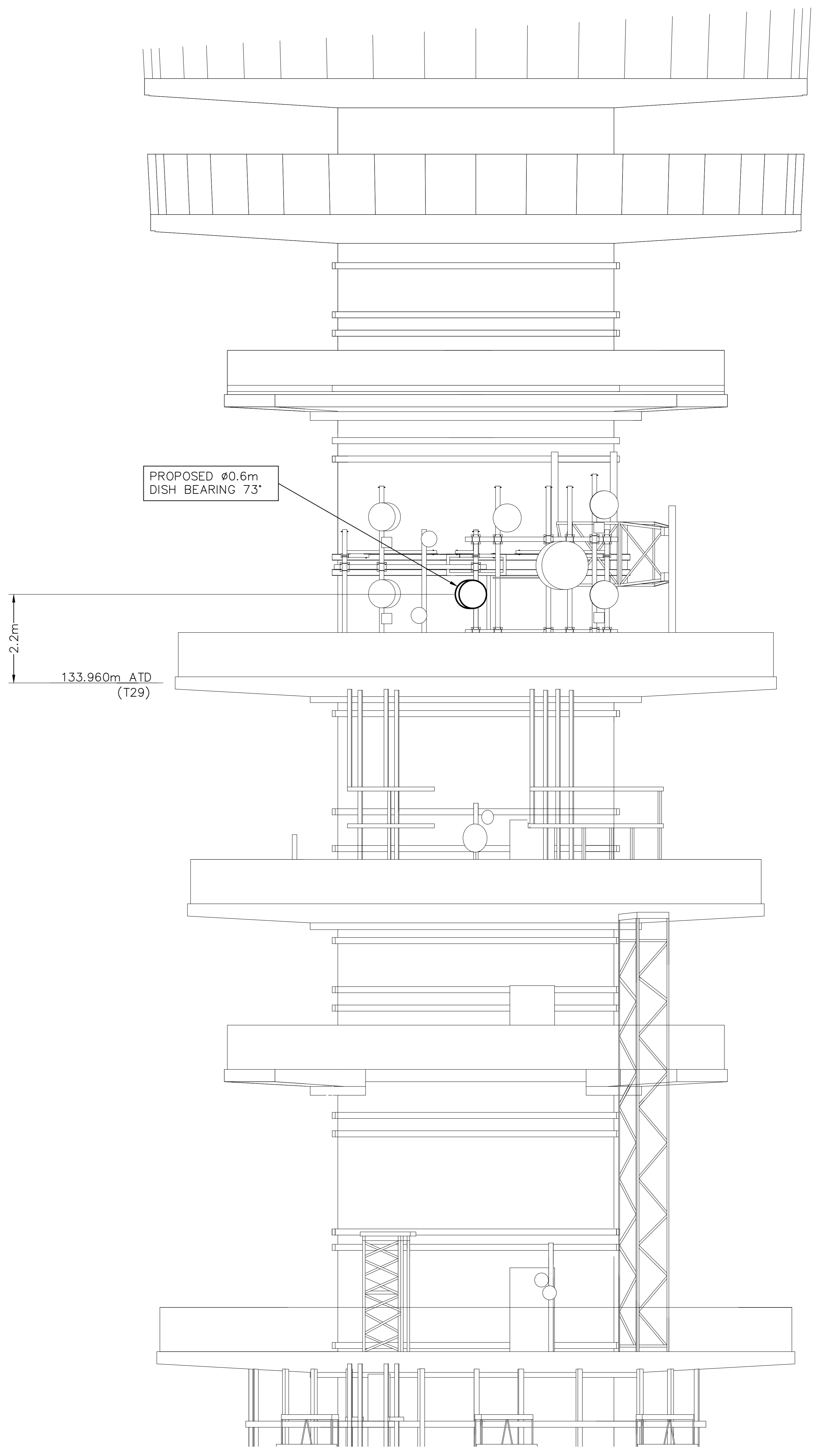


ELEVATION VIEW OF TOWER
FACING EAST
SCALE 1:300



ENLARGED PART ELEVATION VIEW OF TOWER FACING EAST
SHOWING EXISTING AERIALS
SCALE 1:50



PART ELEVATION VIEW OF TOWER FACING EAST
SHOWING PROPOSED AERIALS
SCALE 1:50

DIMENSIONS IN mm UNLESS OTHERWISE STATED © British Telecommunications plc 2015 DO NOT SCALE ORIGINAL SCALE AS SHOWN

| | | |
|----------|------------------------|--|
| AO A1 | DRN S.A.D CKD | ANY MODIFICATION TO THE DRAWING OR THE USE OF ALTERNATIVE ITEMS TO THOSE SPECIFIED MUST BE AGREED WITH THE DESIGNER. |
| | CERTIFICATION DESIGNER | |
| | CLIENT S.SMIQU | |
| | DATE 23/06/15 | |

| | | | | |
|----------|-----------|-------|--|---|
| MATERIAL | | A | LONDON TELECOM TOWER PROPOSAL FOR 2X 0.6M DIAMETER DISH AERIALS BEARING 73 AND 273 DEGREES AT 134M LEVEL | REFERENCES |
| FINISH | | | | S/A 2015/0375-0376 2X 0.6 DISHES T194 T193 |
| | AMENDMENT | ISSUE | BT TSO | UK RSDO |
| | | | WL 4004869 | SHT 03 OF 04 |