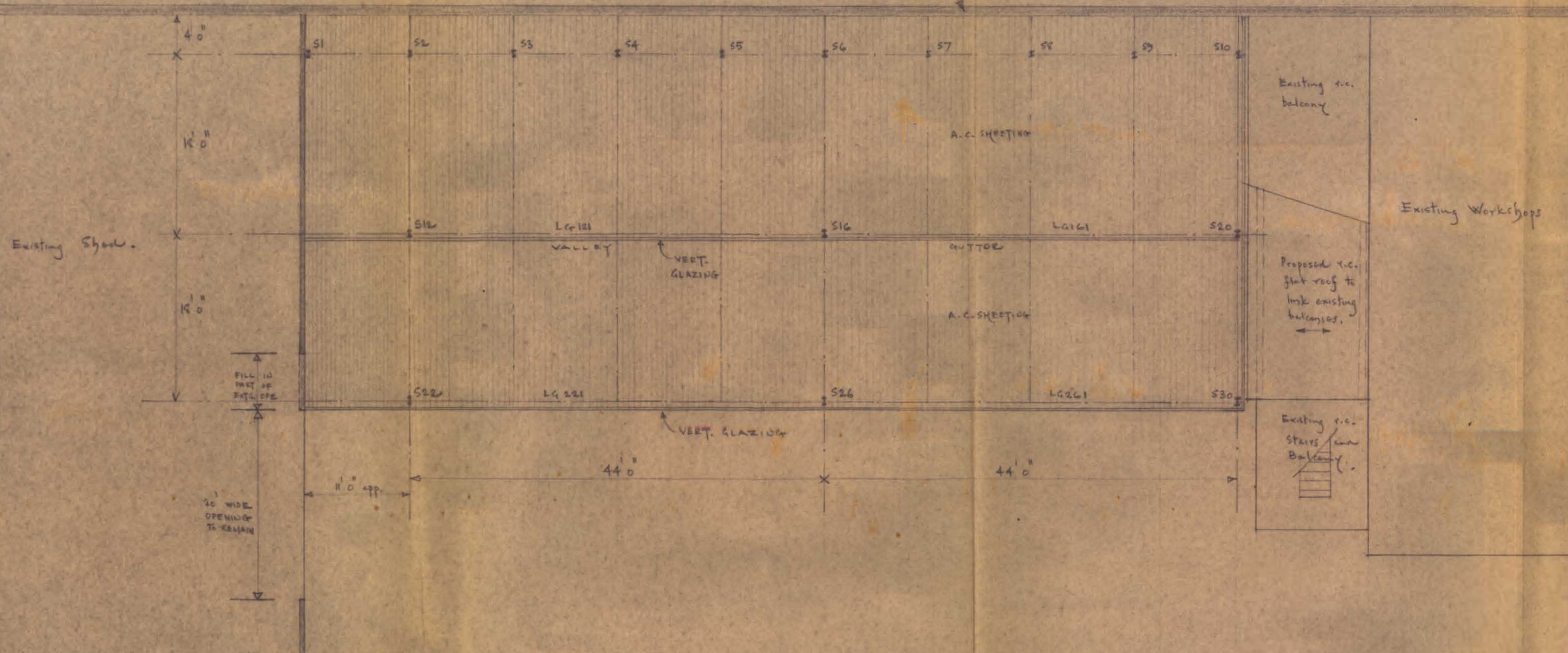


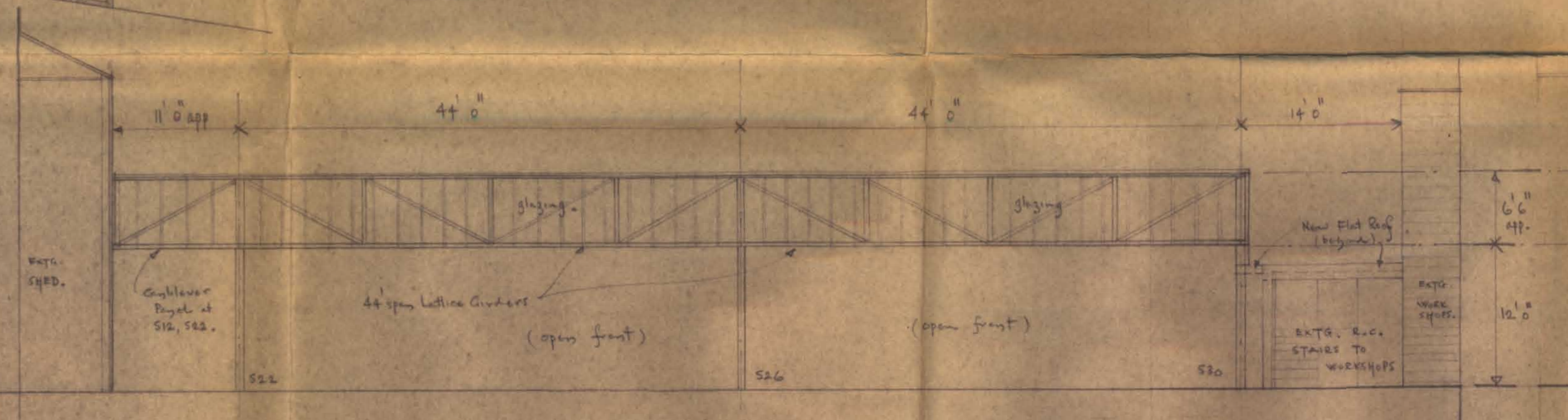
- British Rail Goods Depot -

Existing Wall

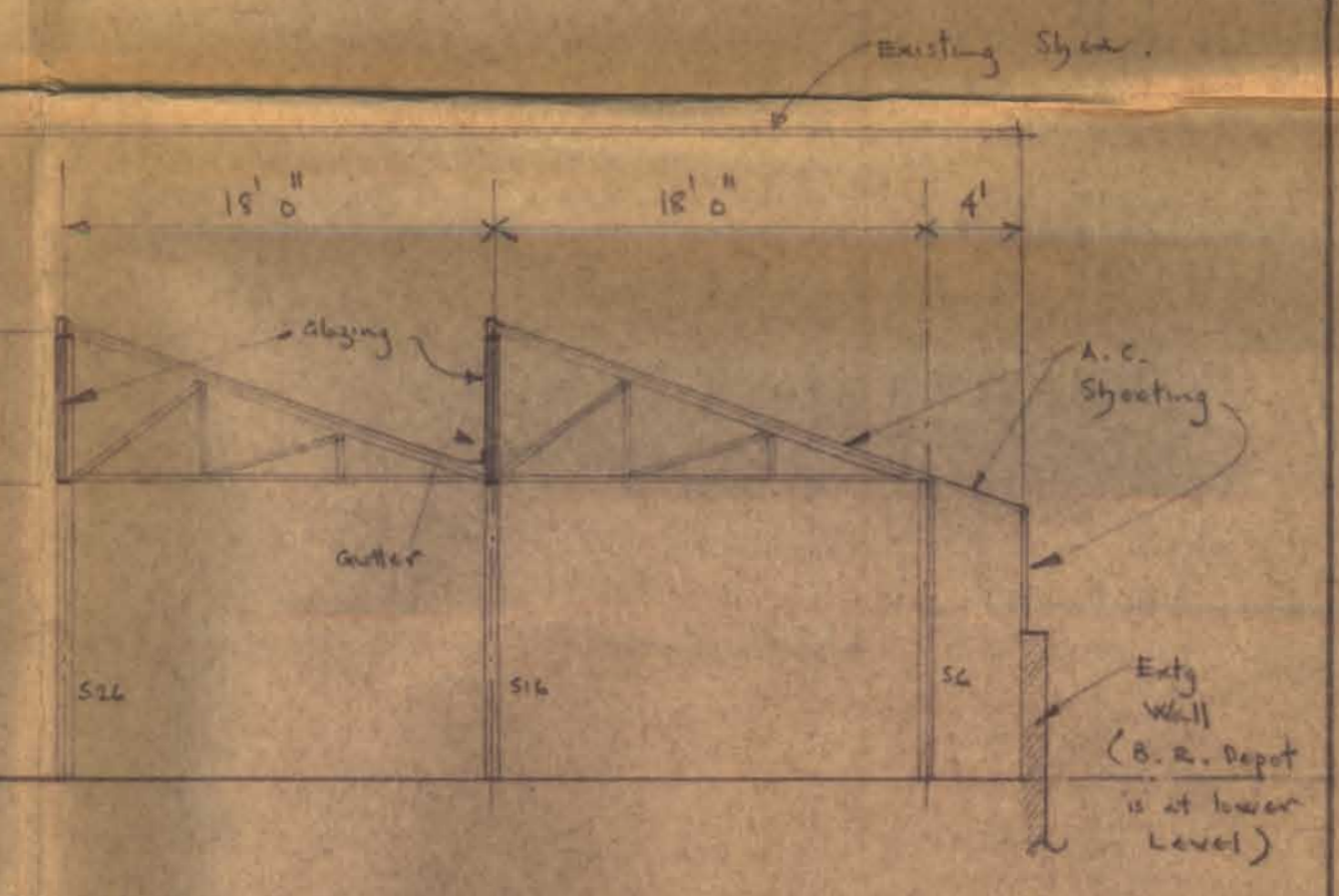
- NOTES.
1. Proposed Shed replaces Storage Shed with Scotch Derrick over, all recently demolished as obsolete.
  2. All work and details to District Surveyor's approval.
  3. All dimensions to be checked on SITE.



PLAN SHOWING PROPOSED MAINTENANCE/PARKING SHED.

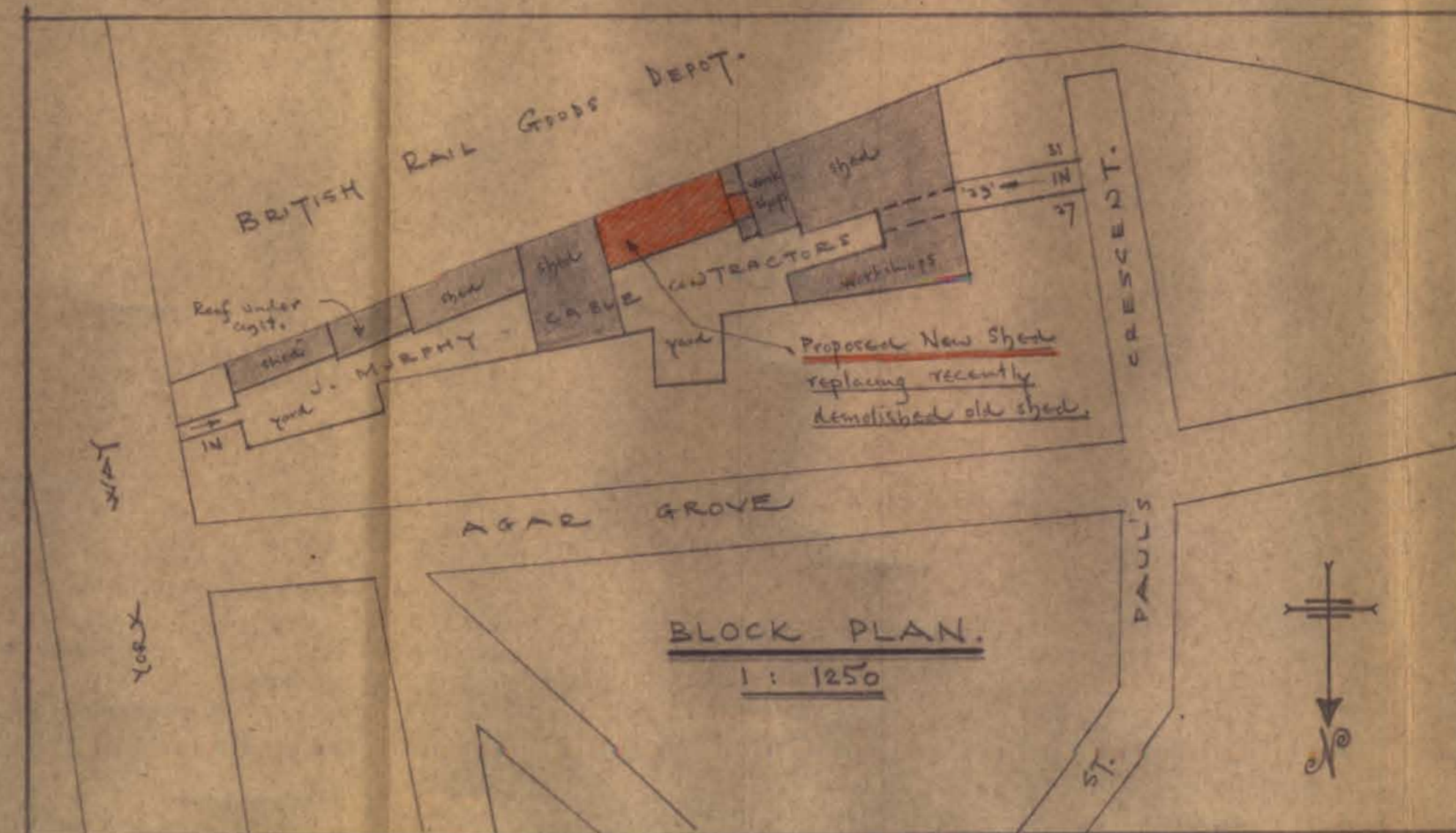


FRONT ELEVATION.



TYPICAL SECTION.

LONDON BOROUGH OF CAMDEN  
PRESENTED TO THE PLANNING AND  
DEVELOPMENT COMMITTEE APPLICATIONS  
SUB-COMMITTEE ON 2 NOV 1966



BLOCK PLAN.  
1:1250

CTP/H13/14/A/2572

REVISION	DATE	MD
J. MURPHY CABLE CONTRACTORS AND CIVIL ENGINEERS LTD.		
CAMDEN TOWN DEPOT 29 ST. PAUL'S CRESCENT, N.W.1.		
GENERAL LAYOUT OF MAINTENANCE/PARKING SHED.		
NOEL O'CONNELL, B.Eng., D.I.C., A.M.I.C.E., A.M.I. STRUCT. E. CONSULTING ENGINEER 1 ANHALT RD., S.W.11. TEL. BAT 5642		DRG. NO. <b>N161/1.</b> SCALE 1/8" TO A FOOT DATE AUG 1966.