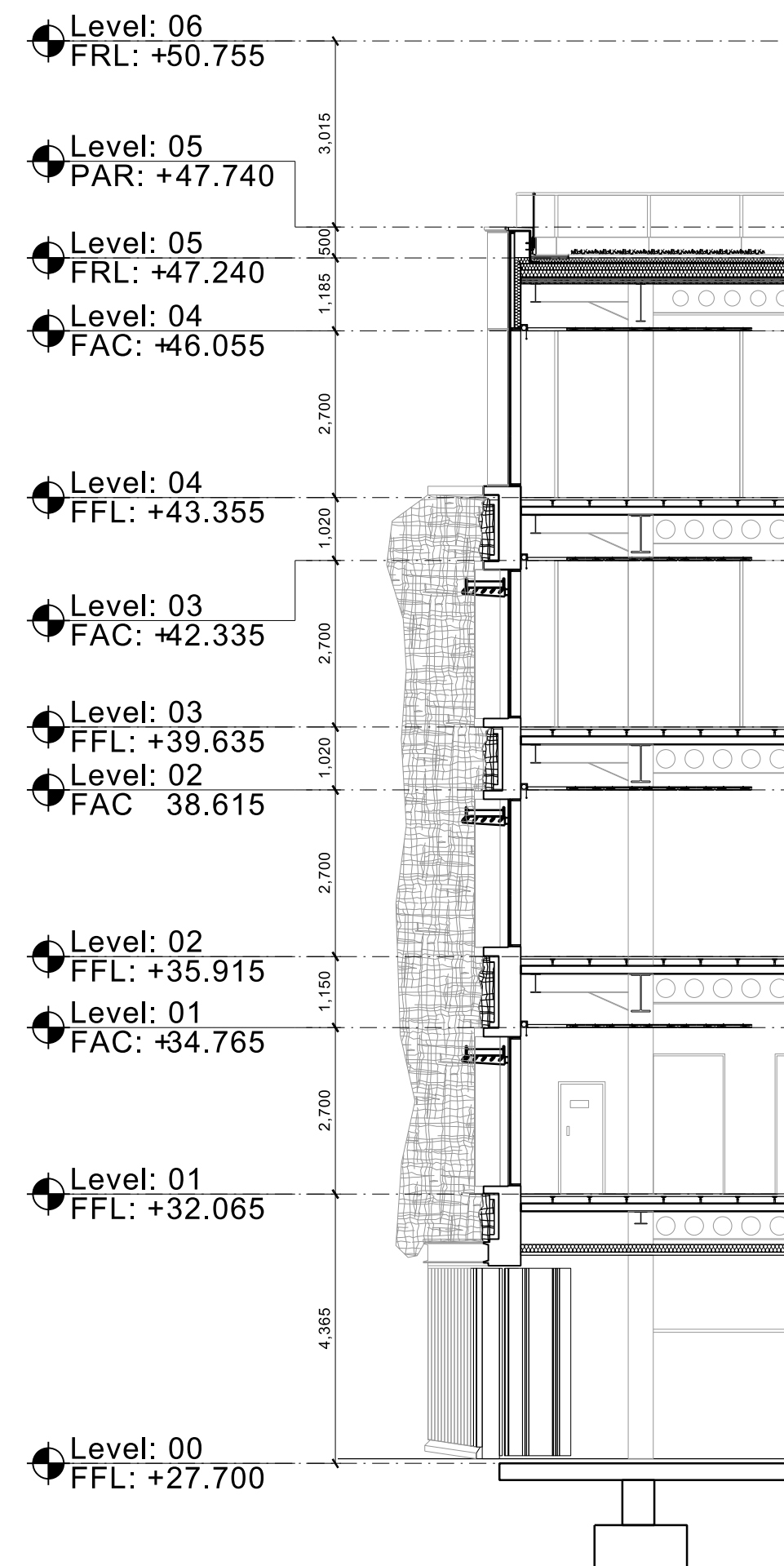
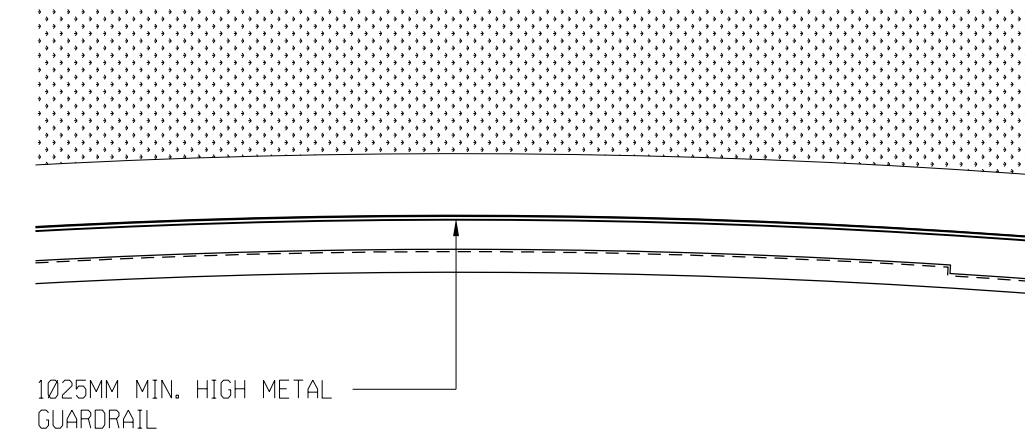


01 PARTIAL ELEVATION  
1 : 100



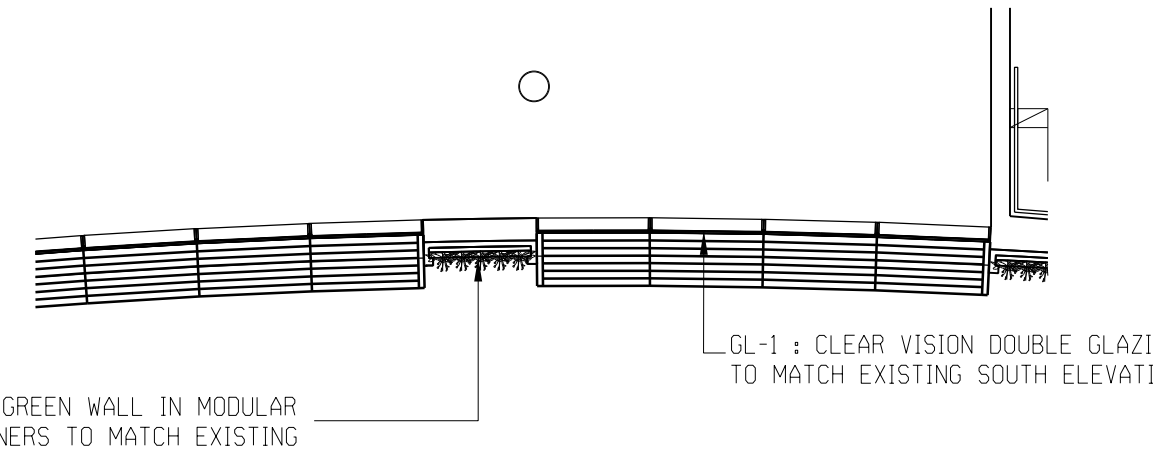
02 SECTION  
1 : 100



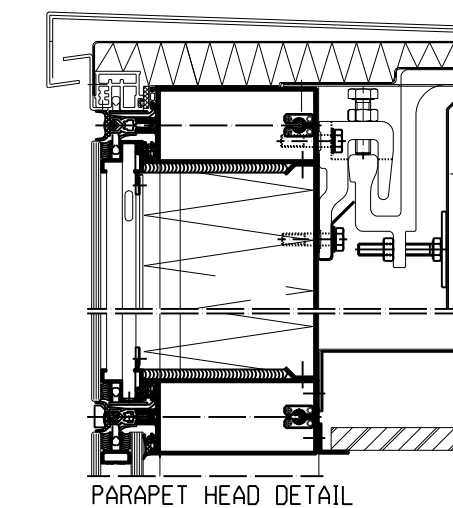
03 PART ROOF PARAPET LEVEL  
1 : 100



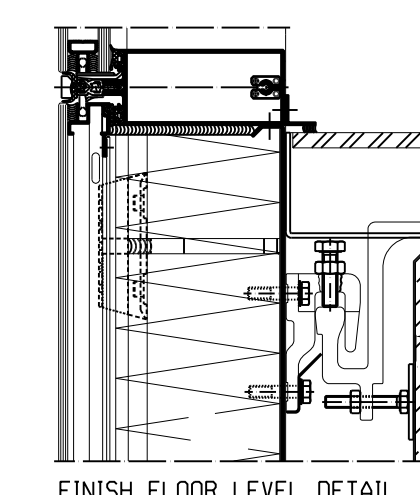
04 PART PLAN UPPER LEVEL  
1 : 100



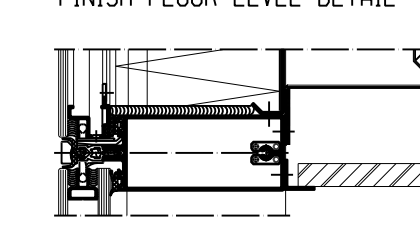
05 PART PLAN LOWER LEVEL  
1 : 100



PARAPET HEAD DETAIL

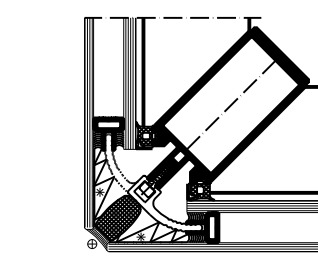


FINISH FLOOR LEVEL DETAIL

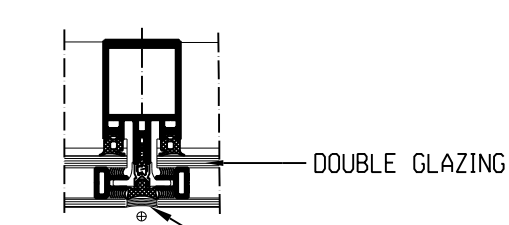


SUSP. CEILING LEVEL DETAIL

09 SECTION DETAILS - MULLIONS  
1 : 5



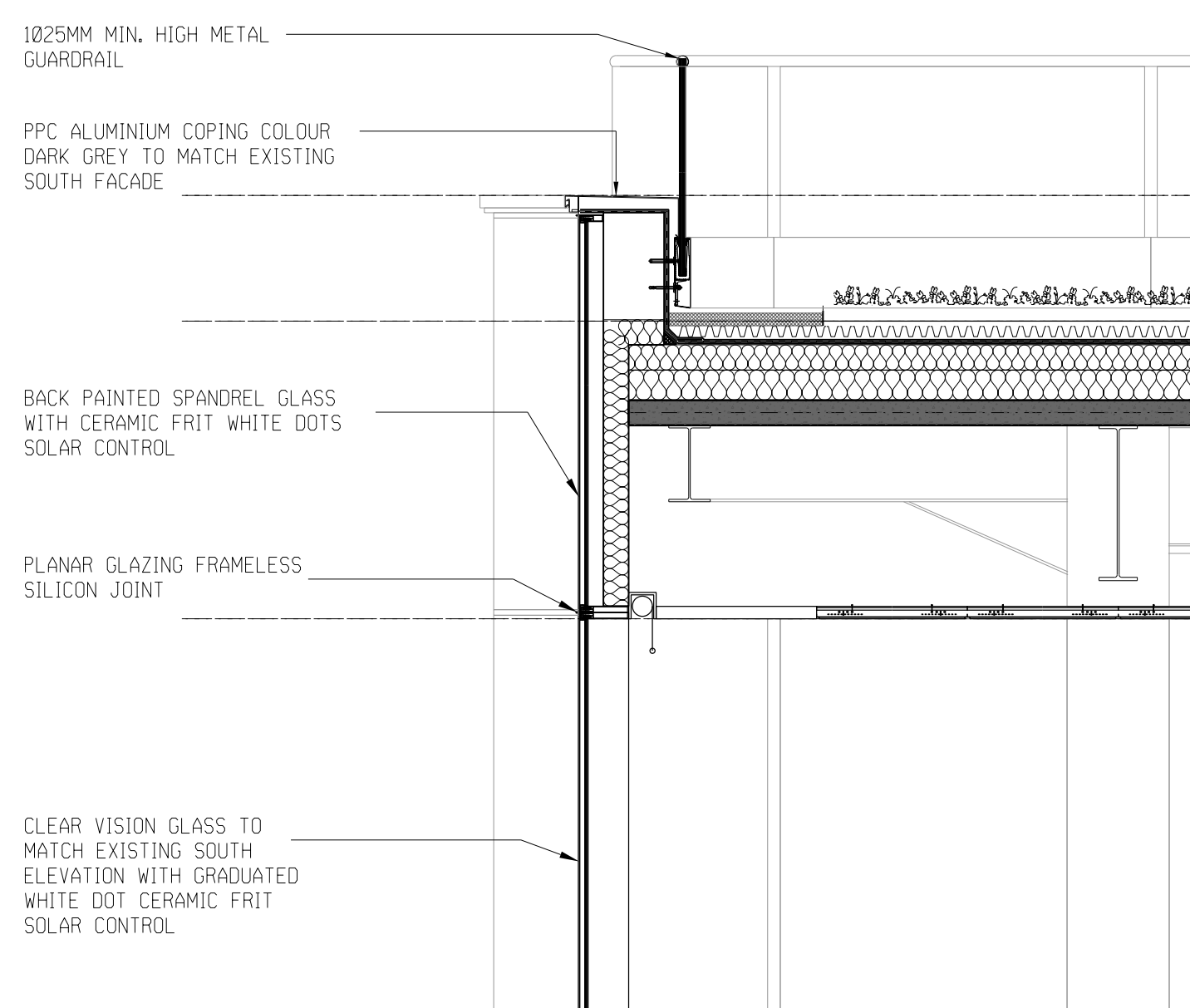
RETURN CORNER DETAIL



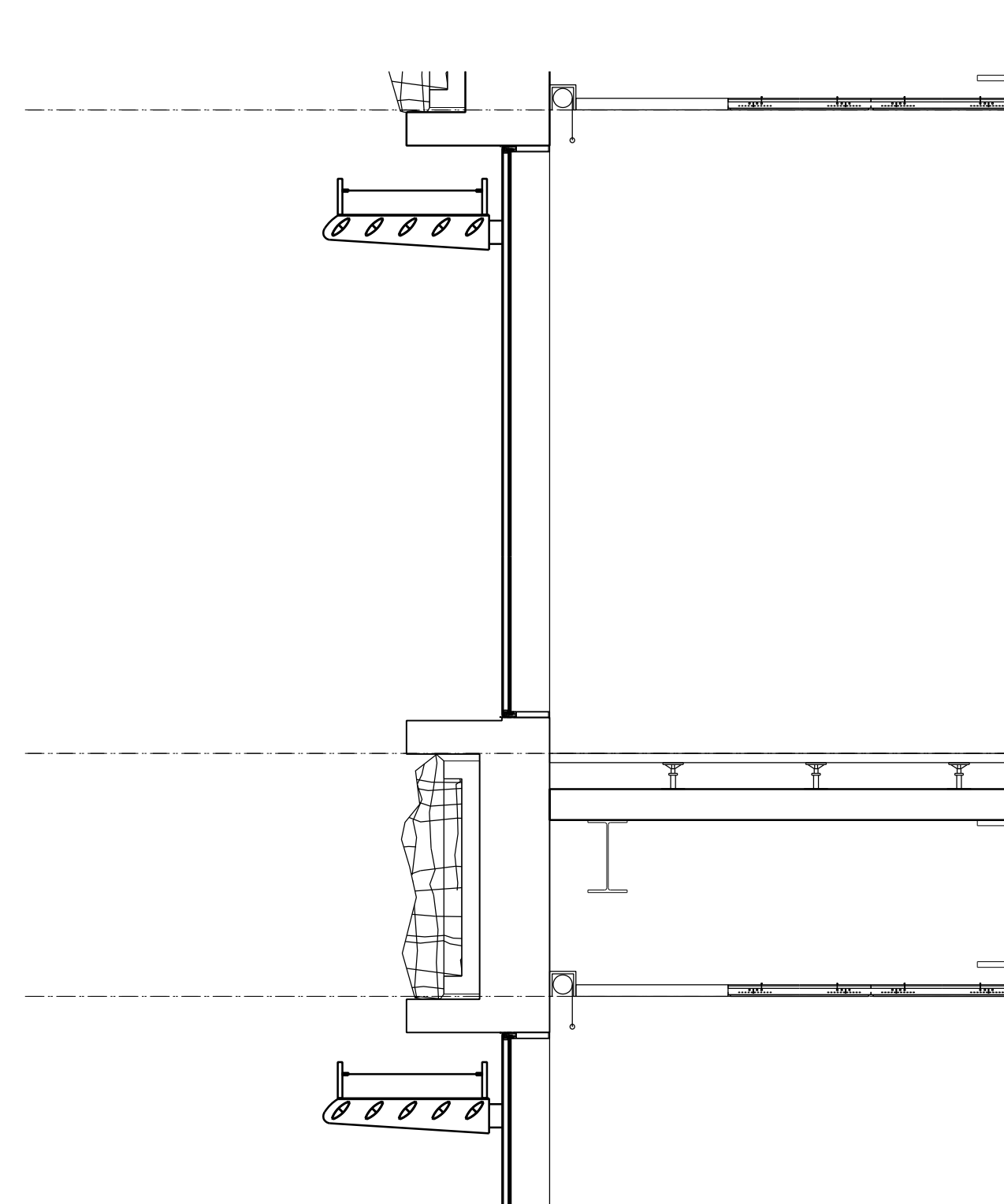
DOUBLE GLAZING

PLANAR GLAZING FRAMELESS SILICON JOINT

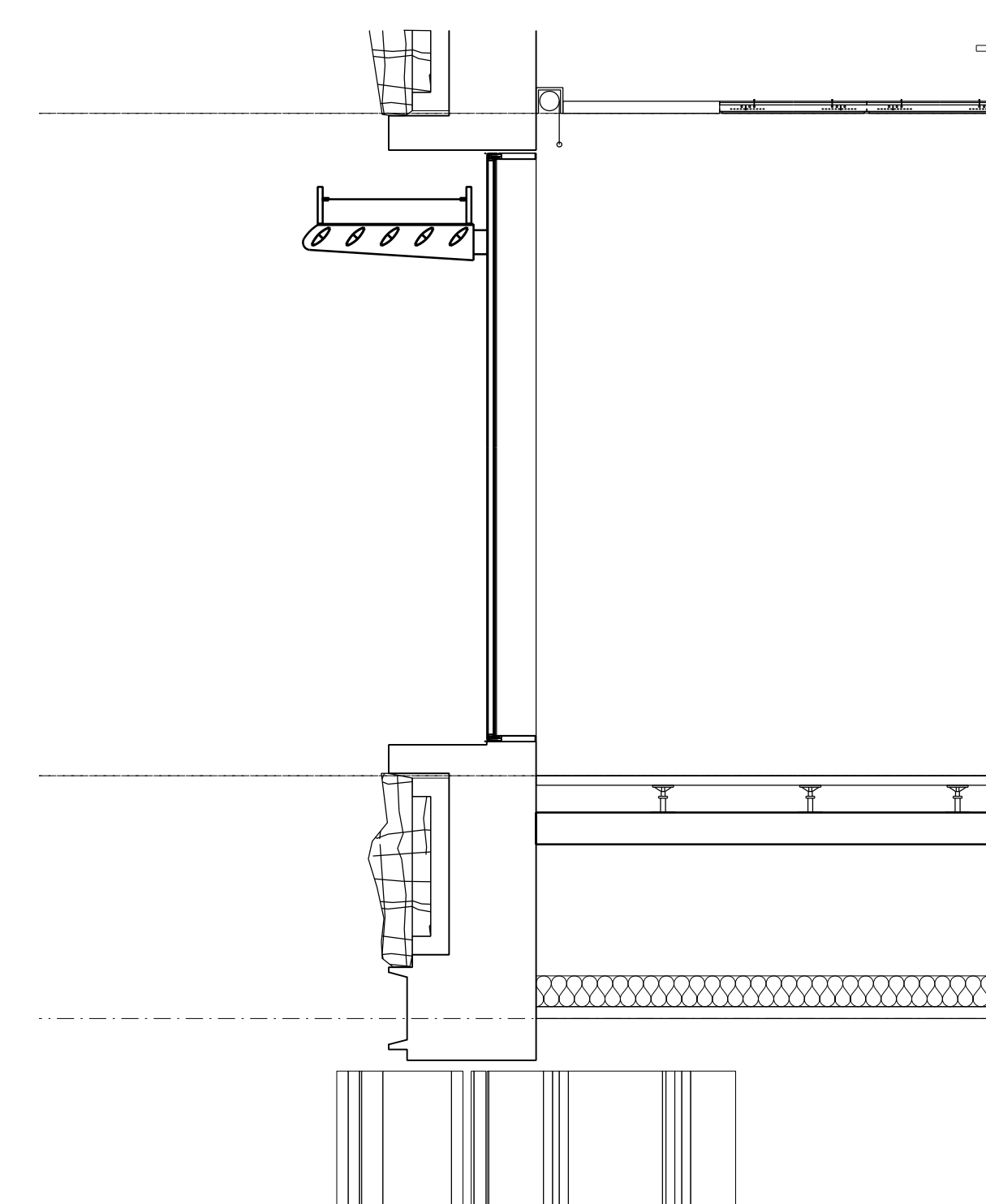
10 PLAN DETAILS - MULLIONS  
1 : 5



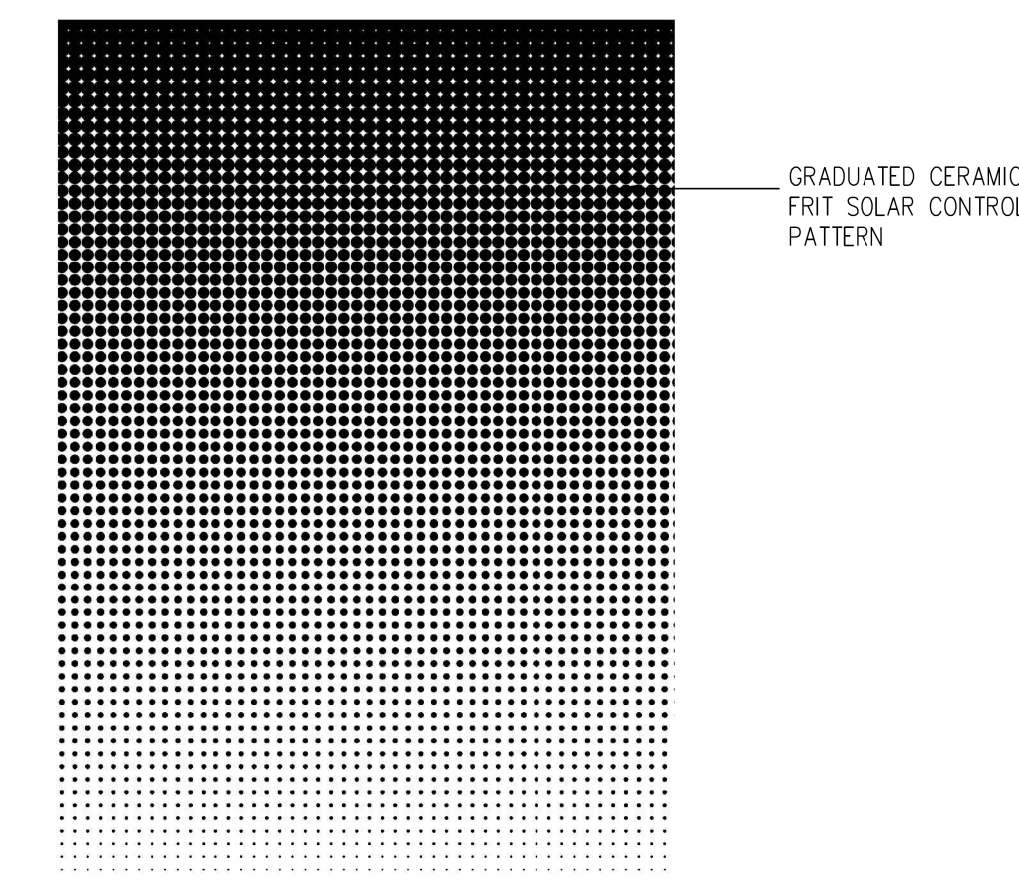
06 PARAPET DETAIL  
1 : 25



07 UPPER FLOOR LEVEL DETAIL  
1 : 25

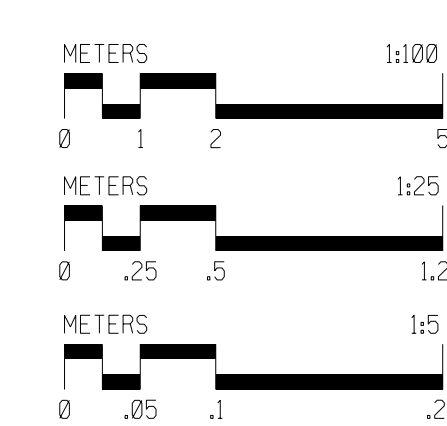


08 LOWER FLOOR LEVEL DETAIL  
1 : 25

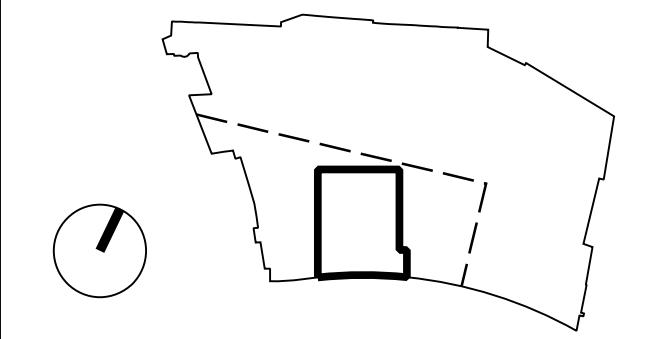


GRADUATED CERAMIC FRIT SOLAR CONTROL PATTERN

11 GRADUATED FRIT PATTERN  
NOT TO SCALE



Copyright of this drawing is vested in 5plus Architects and it must not be copied or reproduced without written consent. Figured dimensions only are to be taken from this drawing. DO NOT SCALE OFF THIS DRAWING. All dimensions are to be taken from the drawings and the conditions. All dimensions and levels should be read only from those values stated in text, on the drawings. This drawing should be read in conjunction with drawings & specifications from structural, mechanical & electrical engineers. KEY PLAN:



T2	10/06/15	Issued for Tender
T2	05/06/15	Issued for Tender
REV:	DATE:	DETAILS:

104-110 Goswell Road  
London  
EC1V 7DH  
t. +44 (0)207 253 7644  
www.5plusarchitects.com

PROJECT: VINN Courtyard Infill Camden  
TITLE: Architecture Details External Facade Details  
SCALE: Various  
ORIGIN DATE: 05/06/15  
DRAWN: OR  
CHECKED: AT  
STATUS: Tender  
PROJECT: 05445  
DRAWING NO: A9-DPA-016  
REV: T2  
Architecture | Masterplanning | Interiors | Graphics | Branding