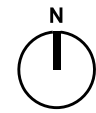
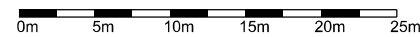




Key:  
— Extent of property boundary  
- - - Boundary to vaults below pavement level



Proposed Block Plan - 1:500



<table border="1"> <tr> <th>Rev/Date</th> <th>Revision description</th> <th>Initial</th> <th>Checked</th> </tr> <tr> <td>A</td> <td>06.05.15 Planning application submission</td> <td>MA</td> <td>HJ</td> </tr> <tr> <td>B</td> <td>14.05.15 Planning application submission</td> <td>MA</td> <td>HJ</td> </tr> </table>	Rev/Date	Revision description	Initial	Checked	A	06.05.15 Planning application submission	MA	HJ	B	14.05.15 Planning application submission	MA	HJ	<p><b>Notes</b></p> <p>This drawing is copyright and must not be reproduced or disclosed to third parties without the prior written permission of Rio architects Limited.</p> <p>Do not scale this drawing. Responsibility is not accepted by Rio architects limited for errors made by others in scaling from this drawing.</p> <p>Use only written dimensions. Contractor must verify all dimensions before commencing work and any discrepancies are to be notified in writing to Rio architects limited immediately.</p> <p>This drawing is to be read in conjunction with all relevant project drawings and specifications prepared by Rio architects limited and other relevant consultants, specialists etc.</p> <p>All survey information incorporated within this drawing cannot be guaranteed as accurate unless confirmed by a fixed dimension.</p> <p>All dimensions are in millimetres unless noted otherwise.</p> <p>CDM notes are provided to assist the contractor in managing residual hazards identified during the design stage. Any such notes do not relieve the contractor of his duties and he must provide a safe system of work of work based on method statements, risk assessments etc.</p>	<p><b>DRAWING TITLE</b> Proposed block plan</p> <hr/> <p><b>Job No:</b> 0235    <b>Drawing No:</b> AS.01    <b>Rev:</b> B</p> <hr/> <p><b>Scale:</b> 1:500@A3  <b>Drawn By:</b> MA    <b>Checked By:</b> HJ  <b>Drawn Date:</b> 15/04/15    <b>Checked Date:</b> 15/04/15</p> <hr/> <p><b>Drawing Status</b> <b>PLANNING</b></p>	<p><b>CLIENT</b> Endsleigh Street 4 Limited</p> <hr/> <p><b>PROJECT NAME</b> 4 Endsleigh Street London</p>
Rev/Date	Revision description	Initial	Checked												
A	06.05.15 Planning application submission	MA	HJ												
B	14.05.15 Planning application submission	MA	HJ												
<p><b>Notes</b></p> <p>This drawing is copyright and must not be reproduced or disclosed to third parties without the prior written permission of Rio architects Limited.</p> <p>Do not scale this drawing. Responsibility is not accepted by Rio architects limited for errors made by others in scaling from this drawing.</p> <p>Use only written dimensions. Contractor must verify all dimensions before commencing work and any discrepancies are to be notified in writing to Rio architects limited immediately.</p> <p>This drawing is to be read in conjunction with all relevant project drawings and specifications prepared by Rio architects limited and other relevant consultants, specialists etc.</p> <p>All survey information incorporated within this drawing cannot be guaranteed as accurate unless confirmed by a fixed dimension.</p> <p>All dimensions are in millimetres unless noted otherwise.</p> <p>CDM notes are provided to assist the contractor in managing residual hazards identified during the design stage. Any such notes do not relieve the contractor of his duties and he must provide a safe system of work of work based on method statements, risk assessments etc.</p>		<p><b>CLIENT</b> Endsleigh Street 4 Limited</p> <hr/> <p><b>PROJECT NAME</b> 4 Endsleigh Street London</p>													

**rio architects** [www.rioarchitects.com](http://www.rioarchitects.com)

Y Stwddio, 21a Allensbank Road, Cardiff, CF14 3PN  
 tel 44 (0) 2920 250066  
 email [studio@rioarchitects.com](mailto:studio@rioarchitects.com)  
 facebook [www.facebook.com/RioArchitectsLtd](http://www.facebook.com/RioArchitectsLtd)  
 linkedin [www.linkedin.com/company/rio-architects](http://www.linkedin.com/company/rio-architects)

