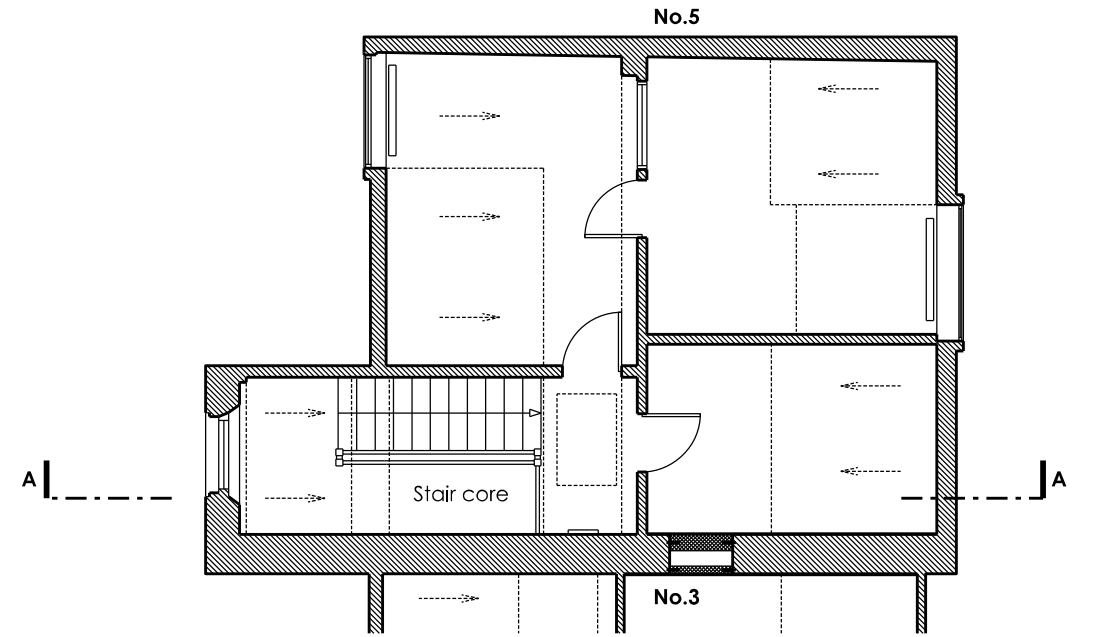
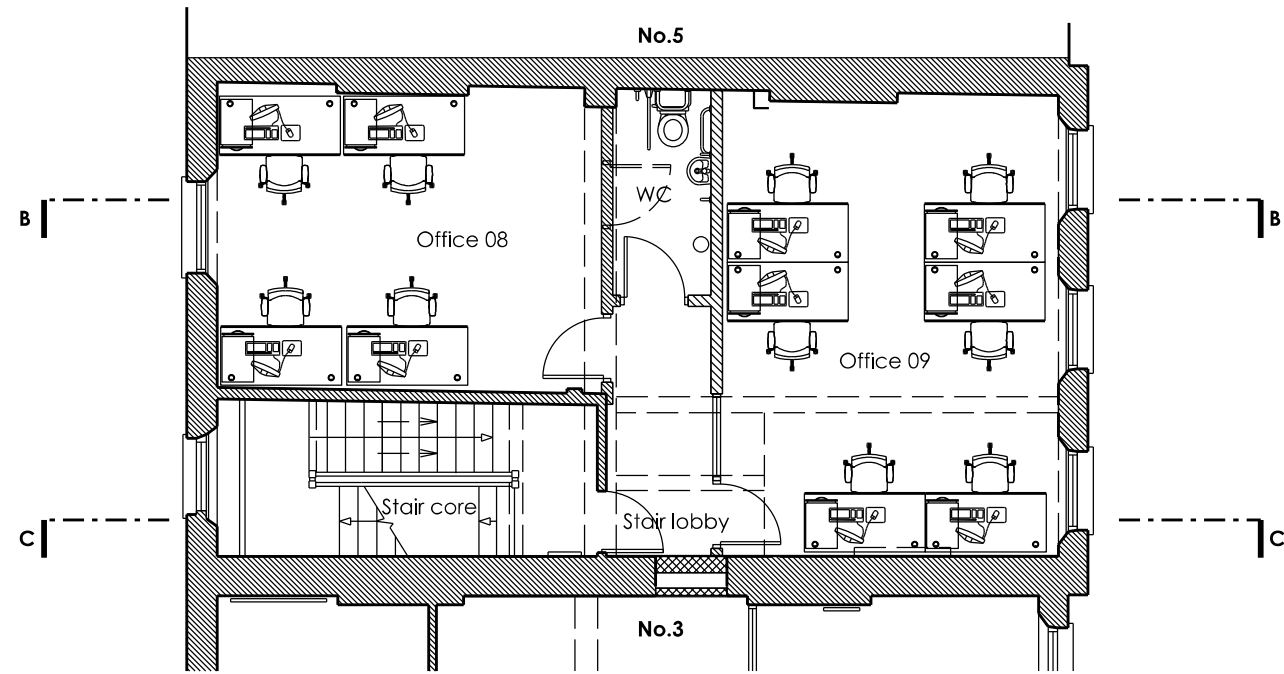


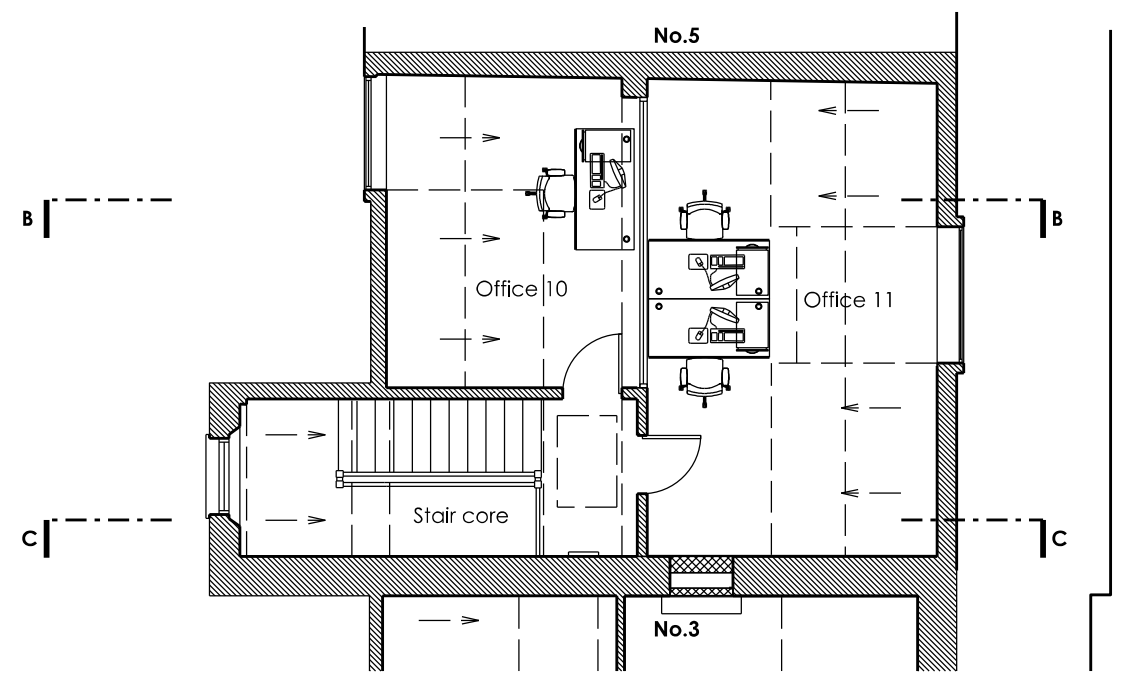
Existing Third Floor



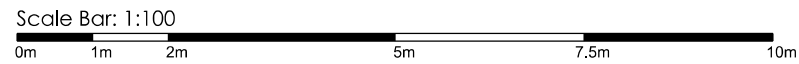
Existing Fourth Floor



Proposed Third Floor



Proposed Fourth Floor



Rev/Date	Revision description	Initial	Checked
A	26.03.15 Glazed partitions/screens and office furniture added.	MA	HJ
B	14.04.15 Section lines added.	MA	HJ
C	08.05.15 Planning application submission	MA	HJ
D	14.05.15 Planning application submission	MA	HJ

Notes

This drawing is copyright and must not be reproduced or disclosed to third parties without the prior written permission of Rio architects Limited.

Do not scale this drawing. Responsibility is not accepted by Rio architects limited for errors made by others in scaling from this drawing.

Use only written dimensions. Contractor must verify all dimensions before commencing work and any discrepancies are to be notified in writing to Rio architects limited immediately.

This drawing is to be read in conjunction with all relevant project drawings and specifications prepared by Rio architects limited and other relevant consultants, specialists etc.

All survey information incorporated within this drawing cannot be guaranteed as accurate unless confirmed by a fixed dimension.

All dimensions are in millimetres unless noted otherwise.

CDM notes are provided to assist the contractor in managing residual hazards identified during the design stage. Any such notes do not relieve the contractor of his duties and he must provide a safe system of work of work based on method statements, risk assessments etc.

DRAWING TITLE Third and Fourth Floor Plans Existing and Proposed		
Job No: 0235	Drawing No: AL_04	Rev: D
Scale: 1:100@A3	Drawn By: MA	Checked By: HJ
Drawn Date: 25/03/15	Checked Date: 25/03/15	
Drawing Status PLANNING		

CLIENT Endsleigh Street 4 Limited
PROJECT NAME 4 Endsleigh Street London

rio architects www.rioarchitects.com

Y Strydŵ, 21a Allensbank Road, Cardiff, CF14 3PN

tel 44 (0) 2920 250066
 email studio@rioarchitects.com
 facebook www.facebook.com/RioArchitectsLtd
 linkedIn www.linkedin.com/company/rio-architects

