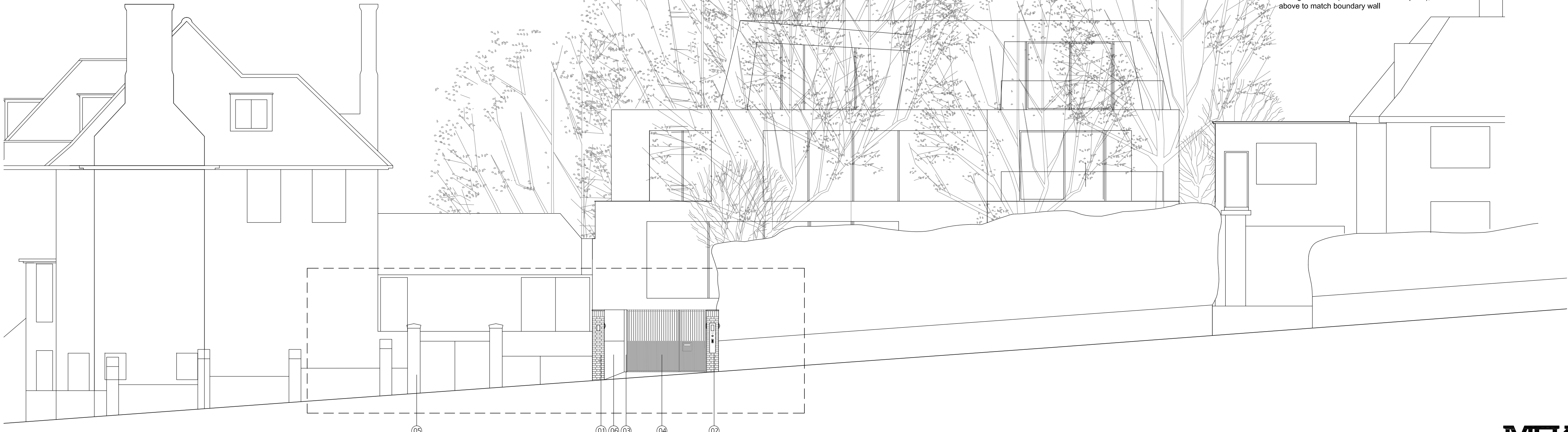




Photo of view from street

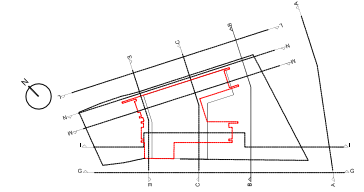


KEY

1. Existing brick pier replaced with new brick pier (to match main house facing brickwork with basalt coping stone)
2. New brick pier (to match main house facing brickwork with basalt coping stone with concealed gate post. Front elevation with PPC aluminium plate (PPC finish to match windows) and access control system)
3. Existing brick pier overclad with brick work (to match main house facing brickwork with basalt coping stone to conceal gate structure)
4. Gate set back into drive - 15 x 50mm PPC steel fins and dogposts (40mm centres, (painted black). 1.9m leaf and 1.0m leaf with separate operating feature to allow option of pedestrian access only)
5. Neighbour gate at 15 Templewood avenue in same configuration as proposed
6. Facing brick wall (to match house and piers), with new trellis above to match boundary wall

date	rev	revisions

key plan



notes

DMFK Architects Ltd take no responsibility for dimensions obtained by scaling from this drawing. If no dimension is shown the recipient must ascertain the dimension specifically from the architect or by site measurement and may not rely on the drawing. Supply of the drawing in digital form is solely for convenience and no reliance may be placed on any data in digital form. All data must be checked against hard copy. This drawing is issued for design intent only and should not be used for construction unless stated.

copyright
This drawing is the property of dMFK Architects Ltd. No disclosure or copy of it may be made without the written permission of dMFK Architects Ltd.



the old library 119 chokley gardens london nw6 1aa t 020 7435 1144 f 020 7435 0884 mail info@dmfk.co.uk		DE METZ FORBES KNIGHT ARCHITECTS	
project	drawing title		
17 Templewood Avenue	PROPOSED ELEVATION A-A		
NW3 7UY	FROM TEMPLEWOOD AVENUE		
client	scale at A1	scale at A3	drawn
-	1:50	1:100	JW
project no.	1794	drawing no.	revision
	A150		J
			date
			MAY 13