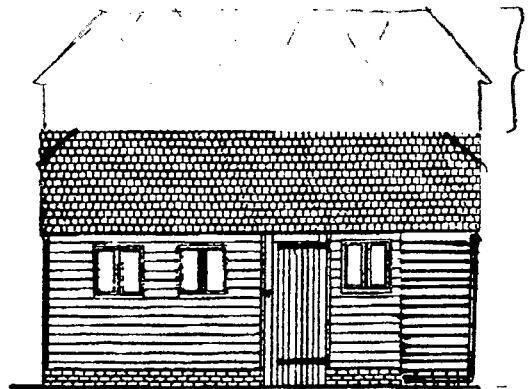
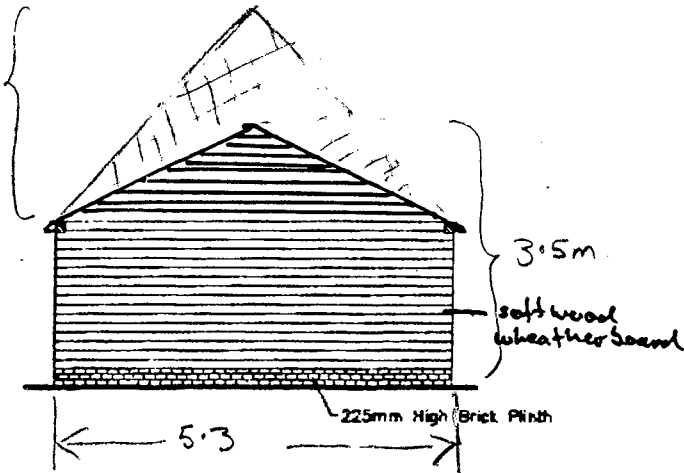
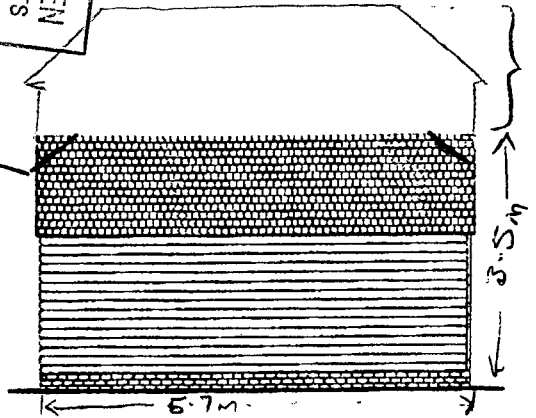
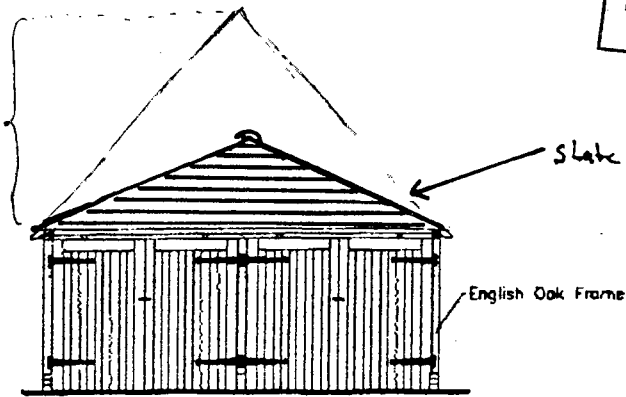
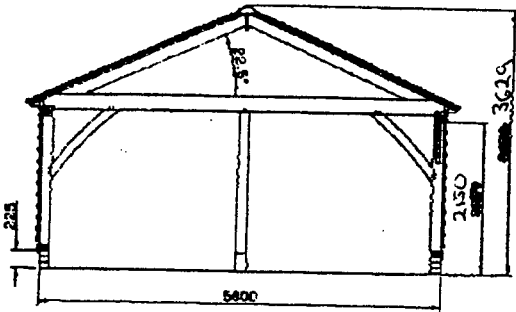


Appendix 1

Garage at the rear of  
62B Savernake Road  
London NW3

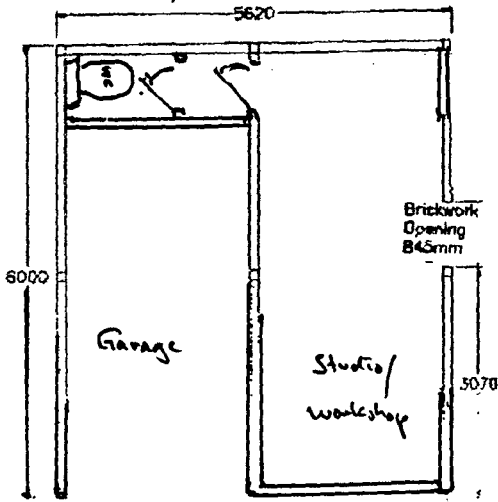
LONDON BOROUGH OF CAMDEN  
TOWN AND COUNTRY PLANNING ACTS  
15 FEB 1999  
PLANS APPROVED  
ON BEHALF OF THE COUNCIL



P9800624R1

LONDON BOROUGH OF CAMDEN  
TOWN AND COUNTRY PLANNING ACTS  
15 FEB 1999  
PLANS APPROVED  
ON BEHALF OF THE COUNCIL

Appendix 2



P9800624R1