

Sergison Bates architects^{Ltd}
Basement

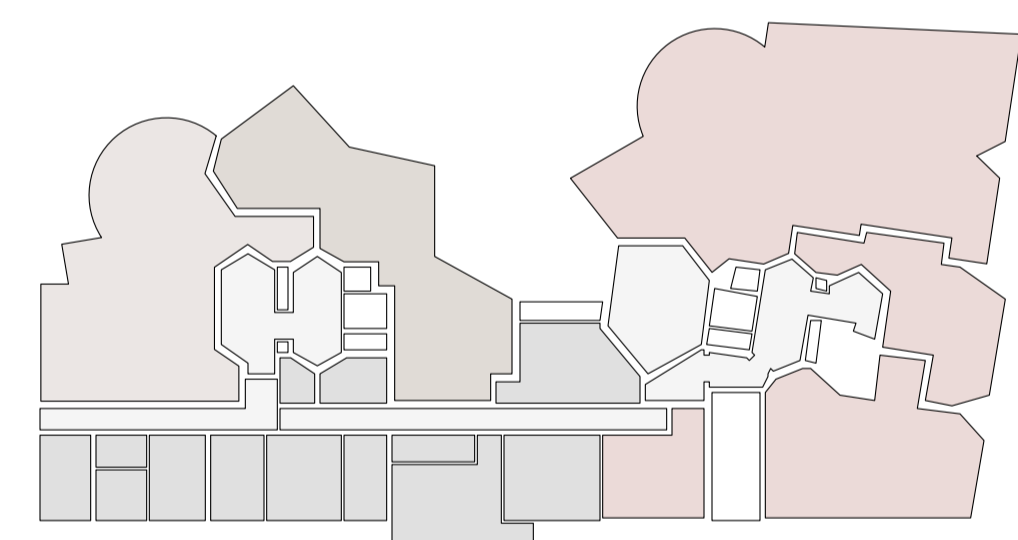
Fitzjohns Avenue, NW3
Planning Technical Documents

Architects	Date	Scale
Sergison Bates architects	28/01/15	1:100@A1
34 Clerkenwell Close		1:200@A3
London EC1R 0AU		
United Kingdom		
Tel +44 (0)20 7255 1564		
e-mail studio		
@sergisonbates.co.uk		

276/4221b

Revision	
A 24/03/15 General update	_____
B 23/06/15 General update	_____

Do not scale from this drawing
 All dimensions to be verified on site
 Limited Liability Partnership Registered in England & Wales
 No. OC317501 Registered office as above



Sergison Bates architects ^{Ltd}
 Lower ground Floor internal layout

Fitzjohns Avenue, NW3
 Planning Technical Documents

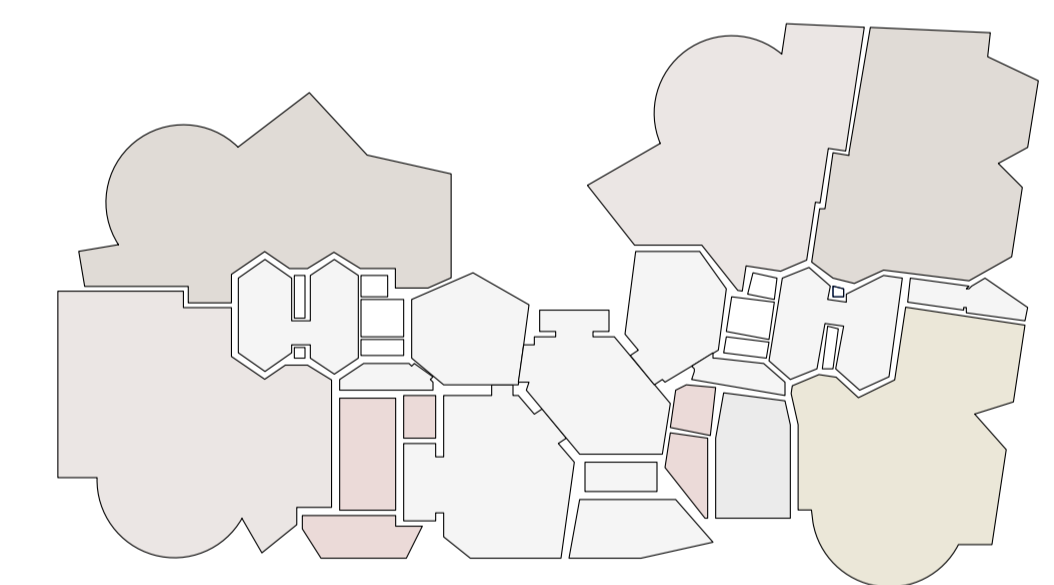
Architects	Date	Scale
Sergison Bates architects	28/01/15	1:100@A1
34 Clerkenwell Close		1:200@A3
London EC1R 0AU		
United Kingdom		

Tel +44 (0)20 7255 1564
 e-mail studio@sergisonbates.co.uk

276/4222b

Revision	
A 24/03/15 General update	
B 23/06/15 General update	

Do not scale from this drawing
 All dimensions to be verified on site
 Limited Liability Partnership Registered in England & Wales
 No. OC317501 Registered office as above
 Drawing may be scaled for planning purposes



Sergison Bates architects LLP
Ground Floor internal layout

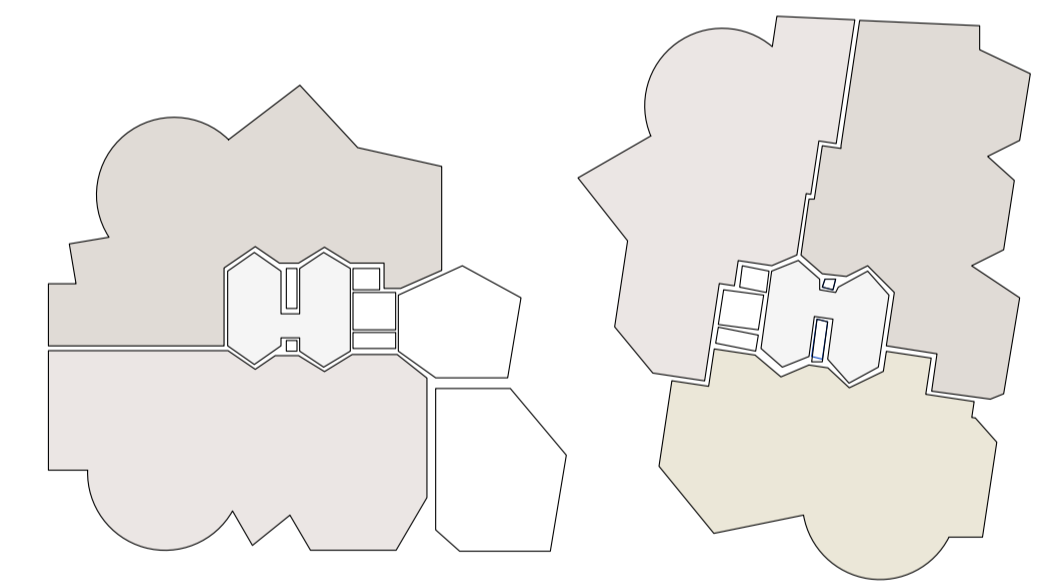
Fitzjohns Avenue, NW3
Planning Technical Documents

Architects	Date	Scale
Sergison Bates architects 34 Clerkenwell Close London EC1R 0AU United Kingdom	28/11/14	1:100@A1 1:200@A3
Tel +44 (0)20 7255 1564 e-mail studio @sergisonbates.co.uk		

276/4223d

Revision	
C 24/03/15 General update	
D 23/06/15 General update	

Do not scale from this drawing
All dimensions to be verified on site
Limited Liability Partnership Registered in England & Wales
No. OC317501 Registered office as above



Sergison Bates architects ^{Ltd}
Upper ground Floor internal layout

Fitzjohns Avenue, NW3
Planning Technical Documents

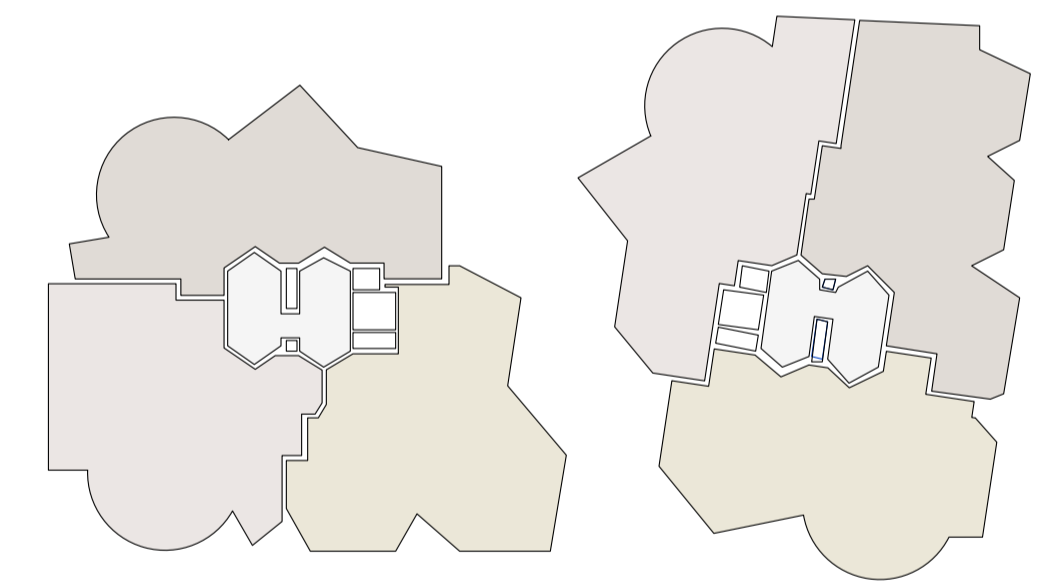
Architects	Date	Scale
Sergison Bates architects	28/01/15	1:100@A1
34 Clerkenwell Close		1:200@A3
London EC1R 0AU		
United Kingdom		

Tel +44 (0)20 7255 1564
e-mail studio@sergisonbates.co.uk

276/4224b

Revision	
A 24/03/15	General update
B 23/06/15	General update

Do not scale from this drawing
All dimensions to be verified on site
Limited Liability Partnership Registered in England & Wales
No. OC317501 Registered office as above
Drawing may be scaled for planning purposes



Sergison Bates architects LLP
First Floor internal layout

Fitzjohns Avenue, NW3
Planning Technical Documents

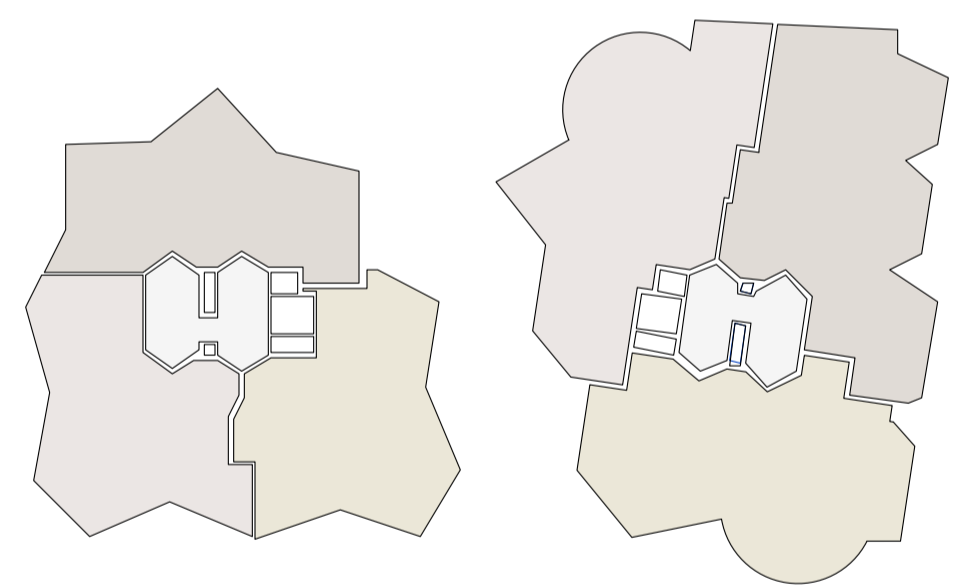
Architects	Date	Scale
Sergison Bates architects	28/01/15	1:100@A1
34 Clerkenwell Close		1:200@A3
London EC1R 0AU		
United Kingdom		

Tel +44 (0)20 7255 1564
 e-mail studio
 @sergisonbates.co.uk

276/4225e

Revision
D 24/03/15 General update
E 23/06/15 General update

Do not scale from this drawing
 All dimensions to be verified on site
 Limited Liability Partnership Registered in England & Wales
 No. OC317501 Registered office as above



Sergison Bates architects ^{Ltd}
 Second Floor internal layout

Fitzjohns Avenue, NW3
 Planning Technical Documents

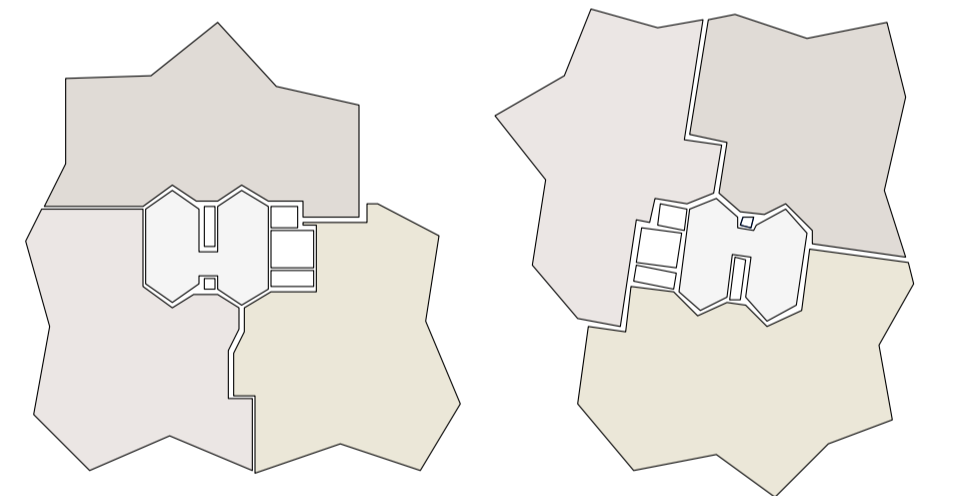
Architects	Date	Scale
Sergison Bates architects	28/01/15	1:100@A1
34 Clerkenwell Close		1:200@A3
London EC1R 0AU		
United Kingdom		

Tel +44 (0)20 7255 1564
 e-mail studio@sergisonbates.co.uk

276/4226b

Revision
A 24/03/15 General update
B 23/06/15 General update

Do not scale from this drawing
 All dimensions to be verified on site
 Limited Liability Partnership Registered in England & Wales
 No. OC317501 Registered office as above
 Drawing may be scaled for planning purposes



Sergison Bates architects LLP
Third floor internal layout

Fitzjohns Avenue, NW3
Planning Technical Documents

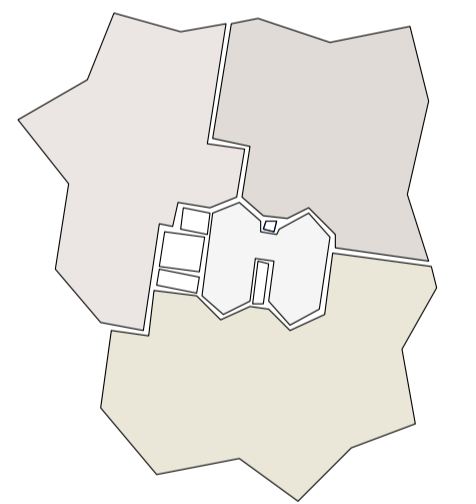
Architects	Date	Scale
Sergison Bates architects	28/01/15	1:100@A1
34 Clerkenwell Close		1:200@A3
London EC1R 0AU		
United Kingdom		

Tel +44 (0)20 7255 1564
 e-mail studio@sergisonbates.co.uk

276/4227b

Revision	
A 24/03/15	General update
B 23/06/15	General update

Do not scale from this drawing
 All dimensions to be verified on site
 Limited Liability Partnership Registered in England & Wales
 No. OC317501 Registered office as above
 Drawing may be scaled for planning purposes



Sergison Bates architects LLP
Fourth floor internal layout

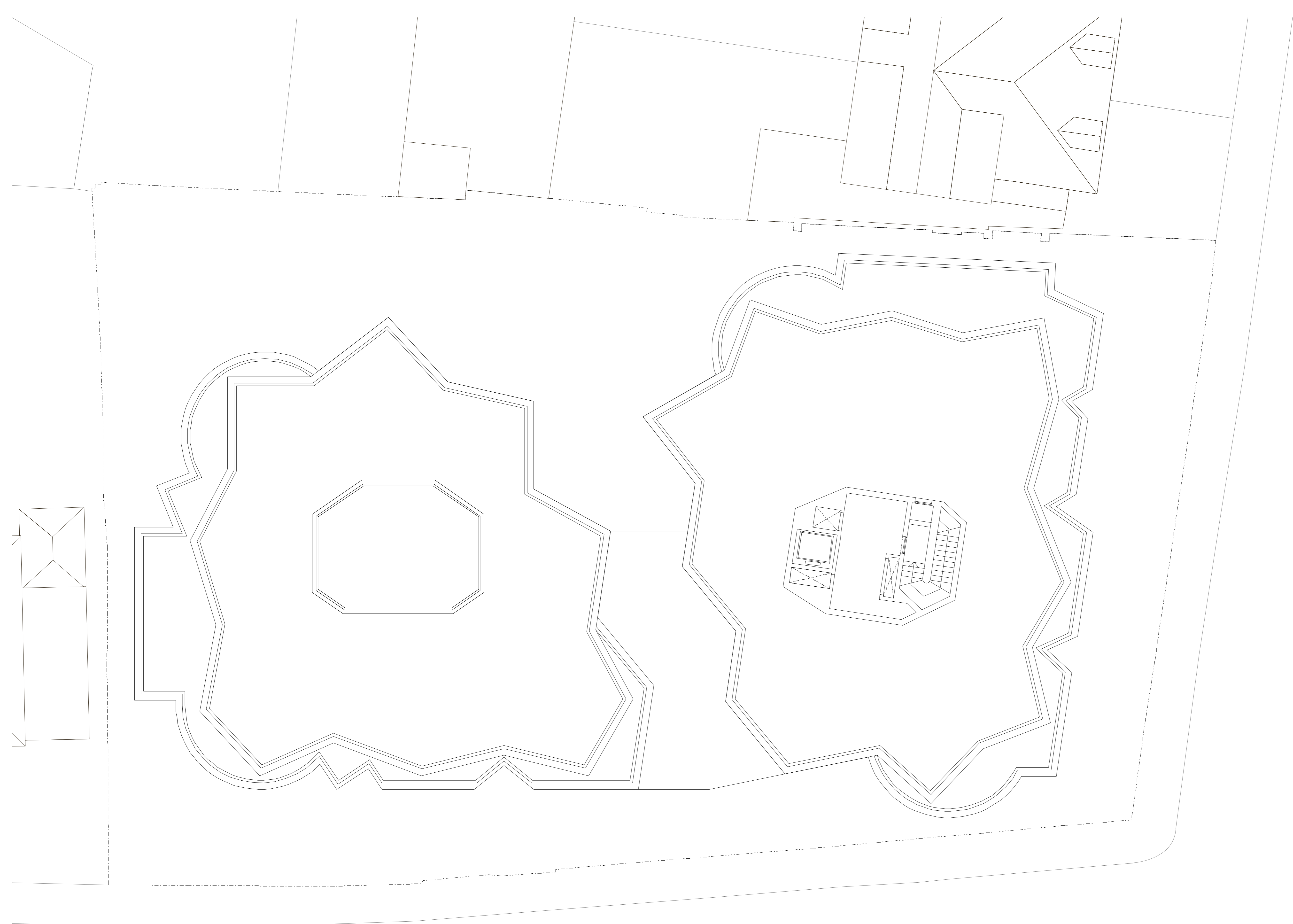
Fitzjohns Avenue, NW3
Planning Technical Documents

Architects	Date	Scale
Sergison Bates architects 34 Clerkenwell Close London EC1R 0AU United Kingdom	28/01/15	1:100@A1 1:200@A3
Tel +44 (0)20 7255 1564 e-mail studio@sergisonbates.co.uk		

276/4228d

Revision
C 24/03/15 General update
D 23/06/15 General update

Do not scale from this drawing
 All dimensions to be verified on site
 Limited Liability Partnership Registered in England & Wales
 No. OC317501 Registered office as above
 Drawing may be scaled for planning purposes



Sergison Bates architects^{LTD}
Roof plan

Fitzjohns Avenue, NW3
Planning Technical Documents

Architects	Date	Scale
Sergison Bates architects	28/01/15	1:100@A1
34 Clerkenwell Close		1:200@A3
London EC1R 0AU		
United Kingdom		

Tel +44 (0)20 7255 1564
e-mail studio
@sergisonbates.co.uk

276/4230c

Revision
A 24/03/15 General update
B 28/05/15 General update
C 23/06/15 General update

Do not scale from this drawing
All dimensions to be verified on site
Limited Liability Partnership Registered in England & Wales
No. OC317501 Registered office as above
Drawing may be scaled for planning purposes