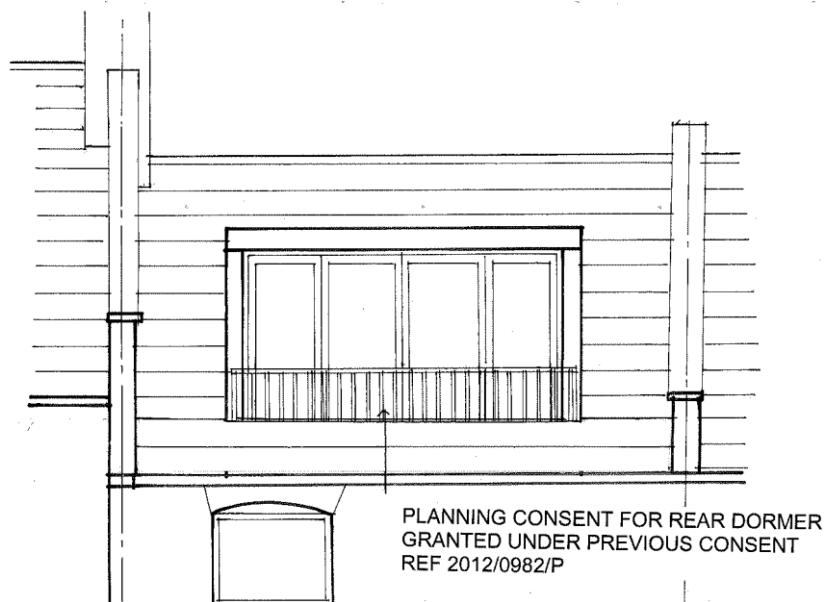


## **32 MONTPELIER GROVE**

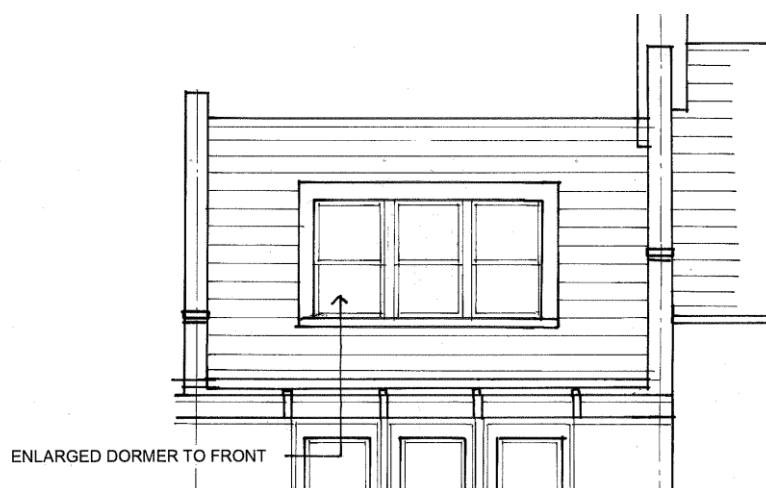
### **DESIGN AND ACCESS STATEMENT**

#### **BACKGROUND**

Planning consent was granted for a new rear dormer window under planning consent 2012/0982/P



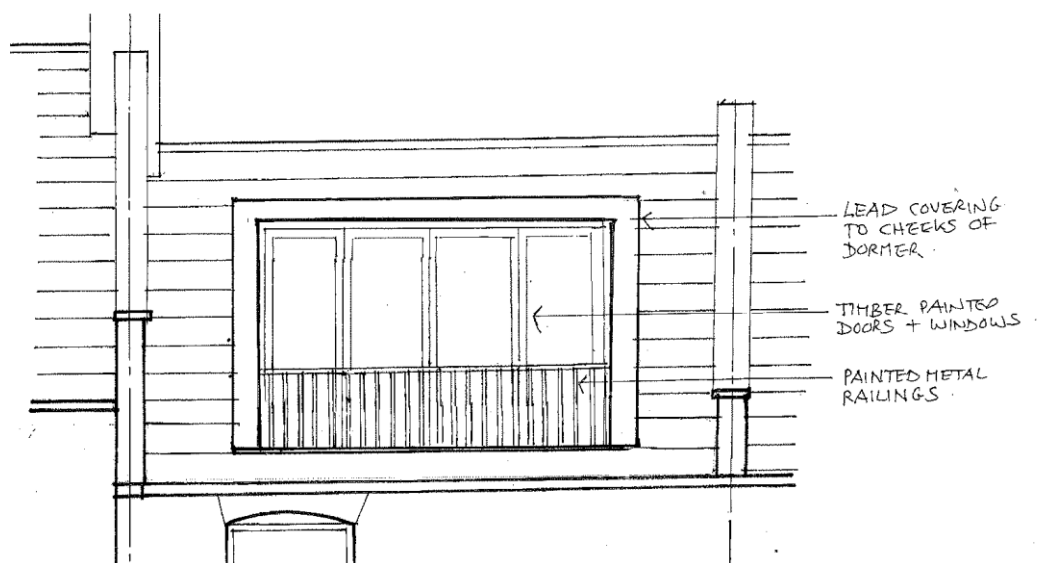
Planning consent was subsequently granted for an enlarged front dormer under consent 2012/2661/P



The rear dormer window was constructed, but unfortunately not in approved materials. Subsequently Camden enforcement officers have requested amendments be made to the rear dormer in order to regularise the construction.



The purpose of this application is to seek approval for a dormer window of the size as constructed, but of materials to match those first approved.



PROPOSED REAR DORMER WITH LEAD CLADDING AND TIMBER WINDOWS AND RAILINGS

## PRECEDENTS

Planning consent has been granted recently for a very similar dormer window of similar proportions at 41 Montpelier Square.



NEW WINDOWS PROPOSED AND BUILT ARE ALUMINIUM AT 41 MONTEPELIER GROVE

There are a number of similar rear dormer windows of similar proportions to the application proposed, including a number on Montpelier Grove.

