

Camden Core Strategy 2010-2025

Local Development Framework



**If you would like this document in large print
or Braille, or in another language, please
contact 020 7974 5615**

Find out more about this document and the LDF by visiting camden.gov.uk/ldf
or by calling the LDF hotline 020 7974 5615/2043.

Forward Planning
London Borough of Camden
Town Hall Extension
Argyle Street
London WC1H 8EQ

Published November 2010.

Camden's Local Development Framework. Core Strategy 2010.

CS5. Managing the impact of growth and development

- 5.1 The overall approach of the Core Strategy, as set out in policy CS1, is to manage Camden's growth to make sure that its opportunities and benefits are delivered and sustainable development is achieved, while continuing to conserve and enhance the features that make Camden such an attractive place to live, work and visit. This flows from the Camden Community Strategy theme of a sustainable Camden that adapts to a growing population. Policy CS5 provides more information on our approach to managing the impact of growth in the borough.

CS POLICY

CS5 – Managing the impact of growth and development

The Council will manage the impact of growth and development in Camden. We will ensure that development meets the full range of objectives of the Core Strategy and other Local Development Framework documents, with particular consideration given to:

- a) providing uses that meet the needs of Camden's population and contribute to the borough's London-wide role;
- b) providing the infrastructure and facilities needed to support Camden's population and those who work in and visit the borough;
- c) providing sustainable buildings and spaces of the highest quality; and
- d) protecting and enhancing our environment and heritage and the amenity and quality of life of local communities.

The Council will protect the amenity of Camden's residents and those working in and visiting the borough by:

- e) making sure that the impact of developments on their occupiers and neighbours is fully considered;
- f) seeking to ensure development contributes towards strong and successful communities by balancing the needs of development with the needs and characteristics of local areas and communities; and
- f) requiring mitigation measures where necessary.

Making sure development achieves the objectives of the Core Strategy

- 5.2 Central to managing Camden's future growth is the need to consider not just the scale and nature of that growth, but how it is provided and the effect on those who live in the area and the borough as a whole. All development in Camden, large or small, whether located in growth areas, highly accessible locations or in other parts of the borough, should take place in accordance with all relevant policies in the Core Strategy and the other documents that form part of Camden's Local Development Framework (see paragraph 4 in the Introduction) to ensure that the Council's vision for the borough is achieved. The Council will seek to ensure that the borough's growth brings benefits and opportunities to all.
- 5.3 The second section of this Core Strategy, *Meeting Camden's needs – Providing homes, jobs and facilities*, sets out our approach to providing the land uses, infrastructure and facilities that are needed to support Camden's communities, workers and visitors. This includes places to live, work and shop, community facilities and provision for walking, cycling and public transport. The section also sets out our approach to the unique issues faced in Central London, the home to many of the uses that contribute to London's role as a capital and major international city, as well as long-established residential communities.

- 5.4 One of the key elements of managing Camden's growth is securing the infrastructure and services needed to support Camden's growing numbers of residents, workers and visitors. To identify the infrastructure need in the borough in future years we commissioned the Camden Infrastructure Study 2009. This work formed the basis of the schedule in Appendix 1, which set out identified key infrastructure programmes and projects including transport, utilities, emergency services, education, health and other community facilities. It gives information on the nature of each infrastructure scheme, where it will be located, who will lead on its delivery and when it is expected to be provided. As the boundaries of the growth area are relatively tightly drawn, taking in the main development opportunities, the infrastructure to support a particular growth area may be provided outside its boundary. Please see section 19 – *Delivering and monitoring the Core Strategy* for more detail on our approach to infrastructure provision. In addition, the individual sections in the Core Strategy also contain details of infrastructure requirements and provision that are relevant to that section (for example, policy CS15 on open space and policy CS11 on transport.)
- 5.5 The third section of the Core Strategy, *A sustainable and attractive Camden – Tackling climate change and improving and protecting Camden's environment and quality of life*, focuses on making sure that growth is sustainable and properly takes into account the character of Camden and the aspects of the borough that make it such an attractive place to live, work and visit. It sets out how we intend to make Camden a low carbon, low waste borough; deal with climate change; and protect, and where possible enhance, our built environment, heritage and open spaces. It also sets out our approach to improving the safety and health of the community.
- 5.6 Our Camden Development Policies Local Development Framework document will be one of the main mechanisms by which we will seek to deliver to vision and objectives in the Core Strategy. It sets out planning policies that provide more detail of our approach to many of the matters covered in this Core Strategy. We will use Camden Development Policies alongside the Core Strategy when we determine applications for planning permission.

Protecting amenity

- 5.7 Camden's high level of amenity – the features of a place that contribute to its attractiveness and comfort – is a major factor in the quality of life of the borough's residents, workers and visitors and fundamental to Camden's attractiveness and success. However, Camden's inner London location, the close proximity of various uses and the presence of major roads and railways can mean that privacy, noise and light can be particular issues in the borough.
- 5.8 Protecting amenity is, therefore, a key part of successfully managing growth in Camden. We will expect development to avoid harmful effects on the amenity of existing and future occupiers and nearby properties or, where this is not possible, to take appropriate measures to minimise potential negative impacts. More detail and guidance on our approach to amenity is contained in Camden Development Policies policy DP26 – and our Camden Planning Guidance supplementary document. Other policies in Camden Development Policies also contribute to protecting amenity in the borough by setting out our detailed approach to specific issues, such as the impact of food, drink and entertainment uses (policy DP12), noise and vibration (policy DP28) and air quality (policy DP32)

Promoting successful communities

- 5.9 A key element to our overall strategy of managing Camden's future growth is to ensure that the opportunities and benefits of this growth are delivered in a way that meets the needs of Camden's residents and promotes strong and successful communities. In assessing development proposals, the Council will take into account the needs and benefits of the development alongside the individual characteristics and needs of the local area and community, and will seek to strike a balance between them. Where relevant, we will take into account the cumulative impacts of developments, or particular types of development, on local areas and communities.

Key evidence and references

- Camden Together – Camden's Sustainable Community Strategy; 2007-2012
- The London Plan (consolidated with alterations since 2004); Mayor of London; 2008





Section 3

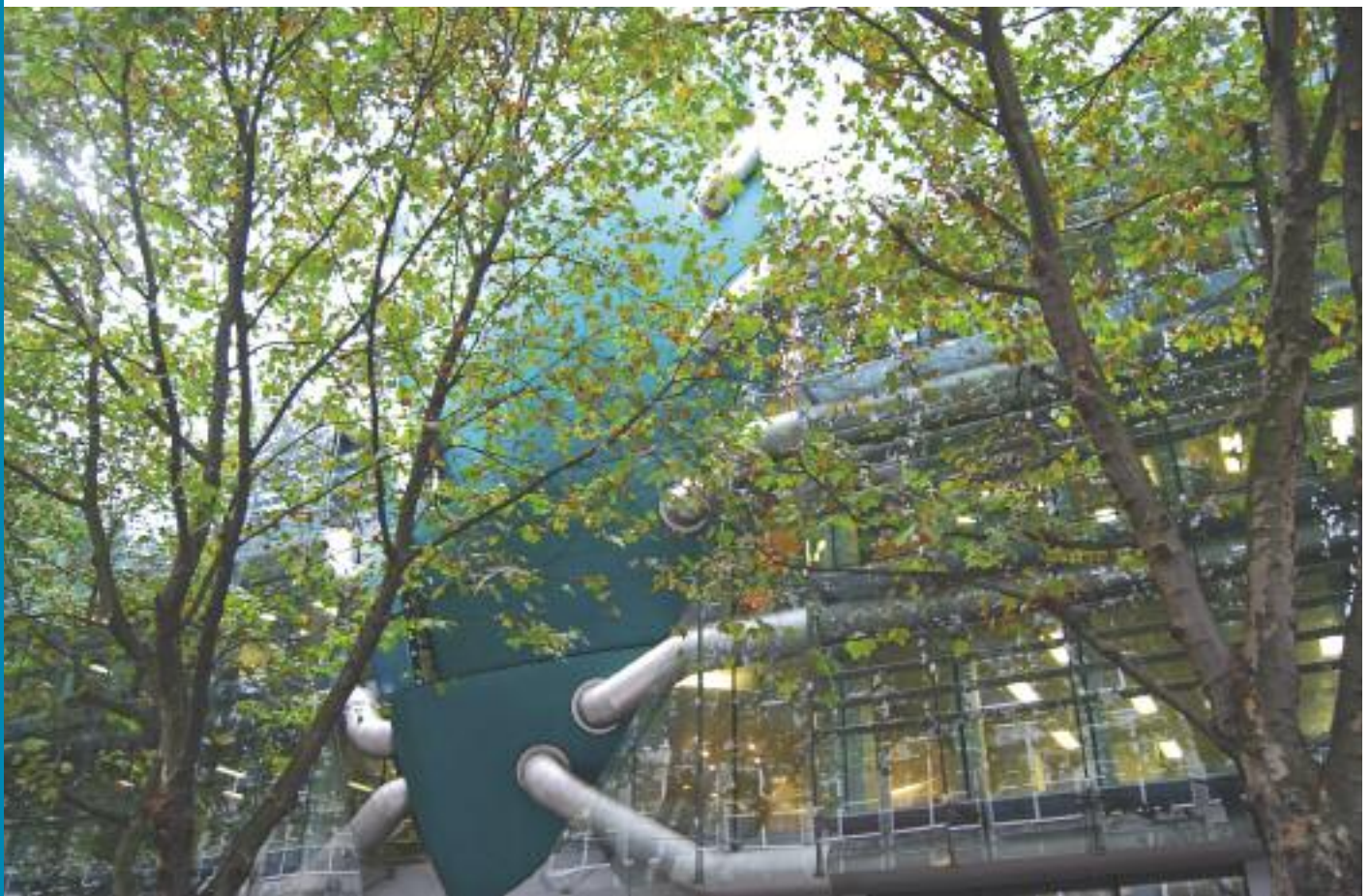
A sustainable and attractive Camden – Tackling climate change and improving and protecting Camden's environment and quality of life

- 13.1 The Core Strategy sets out the Council's approach to managing Camden's growth so that it is sustainable, meets our needs for homes, jobs and services, and protects and enhances quality of life and the borough's many valued and high quality places. This section focuses on delivering the key elements of our strategy relating to:
- making Camden more sustainable and tackling climate change, in particular improving the environmental performance of buildings, providing decentralised energy and heating networks, and reducing and managing our water use;
 - promoting a more attractive local environment through securing high quality places, conserving our heritage, providing parks and open spaces, and encouraging biodiversity;
 - improving health and well-being;
 - making Camden a safer place while retaining its vibrancy; and
 - dealing with our waste and increasing recycling.
- 13.2 The implications of our actions on the environment are increasingly clear and action is needed at global, national and local levels. The Core Strategy has an important role in reducing Camden's environmental impact and achieving sustainable development – meeting our social, environmental and economic needs in ways that protect the environment and do not harm our ability to meet our needs in the future. *A Sustainable Camden that adapts to a growing population* is one of the elements in the vision in Camden's Community Strategy.



CS13. Tackling climate change through promoting higher environmental standards

- 13.3 Camden's Community Strategy commits the Council and our partners to reduce Camden's carbon dioxide emissions in line with the national target of 80% by 2050. To help deliver this, the Council commissioned a study to investigate how we can best cut our carbon dioxide emissions. *Delivering a Low Carbon Camden* (SEA-Renue) found that 30% of Camden's current emissions come from domestic buildings, 58% from non-domestic buildings and 12% from transport. Growth in the borough is expected to increase emissions if they are allowed to grow unconstrained, with emissions from transport expected to see the greatest growth. However, the study found that a 60% reduction can be met through technological means in a financially viable way, with local, decentralised heating systems served by combined heat and power (CHP) being the most cost-effective way for Camden to reduce carbon use. Achieving the 80% target will rely either on alternative technologies and fuels becoming available or on significant behavioural change to reduce energy demand.
- 13.4 Although climate change is not specific to Camden, the borough's highly built-up, inner urban environment means that we face specific environmental issues such as poor air quality and surface water flooding. The measures we can take to minimise the impacts of climate change and adapt to its effects need to consider and be appropriate to the borough's dense and historic character and sensitive environments. Where demonstrated, the Council will have regard to the costs and feasibility of measures to tackle climate change within developments. We will also take into account the cumulative costs of not responding to the need to mitigate and adapt to climate change as well as the long term cost savings such as in energy and water bills to the future occupiers. Measures to tackle climate change are integral in the development process and are a priority of the Council. They should not be seen as 'add-ons'.
- 13.5 The Council can influence environmental performance in the borough through its role in land use and transport planning and also through its own actions and community leadership. *Towards a Sustainable Camden – Camden's Environmental Sustainability Delivery Plan 2008-2012* sets out how we will reduce carbon emissions and improve the environmental performance of activities across the borough to meet national and local targets.



CS POLICY

CS13 – Tackling climate change through promoting higher environmental standards

Reducing the effects of and adapting to climate change

The Council will require all development to take measures to minimise the effects of, and adapt to, climate change and encourage all development to meet the highest feasible environmental standards that are financially viable during construction and occupation by:

- a) ensuring patterns of land use that minimise the need to travel by car and help support local energy networks;
- b) promoting the efficient use of land and buildings;
- c) minimising carbon emissions from the redevelopment, construction and occupation of buildings by implementing, in order, all of the elements of the following energy hierarchy:
 1. ensuring developments use less energy,
 2. making use of energy from efficient sources, such as the King's Cross, Gower Street, Bloomsbury and proposed Euston Road decentralised energy networks;
 3. generating renewable energy on-site; and
- d) ensuring buildings and spaces are designed to cope with, and minimise the effects of, climate change.

The Council will have regard to the cost of installing measures to tackle climate change as well as the cumulative future costs of delaying reductions in carbon dioxide emissions

Local energy generation

The Council will promote local energy generation and networks by:

- e) working with our partners and developers to implement local energy networks in the parts of Camden most likely to support them, i.e. in the vicinity of:
 - housing estates with community heating or the potential for community heating and other uses with large heating loads;
 - the growth areas of King's Cross;

Euston; Tottenham Court Road; West Hampstead Interchange and Holborn;

- schools to be redeveloped as part of Building Schools for the Future programme;
- existing or approved combined heat and power/local energy networks (see Map 4);

and other locations where land ownership would facilitate their implementation.

- f) protecting existing local energy networks where possible (e.g. at Gower Street and Bloomsbury) and safeguarding potential network routes (e.g. Euston Road);

Water and surface water flooding

We will make Camden a water efficient borough and minimise the potential for surface water flooding by:

- g) protecting our existing drinking water and foul water infrastructure, including Barrow Hill Reservoir, Hampstead Heath Reservoir, Highgate Reservoir and Kidderpore Reservoir;
- h) making sure development incorporates efficient water and foul water infrastructure;
- i) requiring development to avoid harm to the water environment, water quality or drainage systems and prevents or mitigates local surface water and downstream flooding, especially in areas up-hill from, and in, areas known to be at risk from surface water flooding such as South and West Hampstead, Gospel Oak and King's Cross (see Map 5).

Camden's carbon reduction measures

The Council will take a lead in tackling climate change by:

- j) taking measures to reduce its own carbon emissions;
- k) trialling new energy efficient technologies, where feasible; and
- l) raising awareness on mitigation and adaptation measures.

Reducing the effects of, and adapting to, climate change

Sustainable patterns of development

- 13.6 The location of development and mix of land uses have a significant influence on the amount of energy we use for transport, as well as whether we can generate or supply local energy efficiently. We will make the most efficient use of Camden's limited land and steer growth and uses that will generate a large number of journeys to the most accessible parts of the borough. We will also encourage an appropriate mix of uses to support sustainable modes of travel such as walking and cycling as well as local energy networks. Development will be focussed in Camden's growth areas, with other highly accessible locations, such as central London and most of our town centres, also considered suitable for development that significantly increases travel demand (please see policy CS1 – *Distribution of growth* and the Key Diagram – Map 1).

Efficient use of land and buildings

- 13.7 The efficient use of land and buildings will reduce pressure to develop undeveloped, 'greenfield' sites. Camden's historic and built up nature means most of our greenfield sites are designated open spaces. The Council will encourage higher densities in line with policy CS1 – *Distribution of growth*. To enable buildings to last longer it is important that they are designed and built to a high standard and to accommodate the changing requirements of occupants over time. Buildings can be designed to be adaptable in the future if consideration is given to:
- the design of the structure, to enable expansion;
 - the layout of the internal space;
 - mechanical services, to allow for expansion or changing expectations and technologies; and
 - enabling 'retro-fitting', for example for renewable energy generation.

Energy hierarchy

Ensuring developments use less energy

- 13.8 A building's use, design, choice of materials and other measures can minimise its energy needs during both construction and occupation. The Council will encourage all developments to meet the highest feasible environmental standards taking into account the mix of uses, the possibility of re-using buildings and materials and the size and location of the development. In addition to design and materials, a building's internal heating and cooling design, lighting and source of energy can further reduce energy use. Policy DP22 – *Promoting sustainable design and construction* in Camden Development Policies provides further guidance on what measures can be implemented to achieve an environmentally sustainable building. The Building Research Establishment's Environmental Assessment Method (BREEAM) and the Code for Sustainable Homes provide helpful assessment tools for general sustainability. Further details on these assessment tools can be found in Development Policy DP22 and our Camden Planning Guidance supplementary document.
- 13.9 Camden's existing dense built form with many conservation areas and other heritage assets means that there are often limits to the contribution that orientation, height and footprint can make towards the energy efficiency of a building. This dense character, along with the varying heights of buildings in central London, can also make the installation of various technologies, including renewable energy technologies more difficult. For example, the efficient use of photovoltaics in Central London can be constrained by overshadowing from taller buildings. We will expect high quality and innovative design to help combat these constraints. Energy efficiency measures relating to heritage assets will be welcomed provided that they do not cause harm to the significance of the heritage asset and its setting. The refurbishment of some existing properties in the borough, such as Camden's EcoHouse in Camden Town and a home in Chester Road in Highgate have demonstrated how Victorian properties can be upgraded to meet Level 4 of the Code for Sustainable Homes energy performance standards. Given the large proportion of development in the borough that relates to existing buildings, we will expect proportionate measures to be taken to improve their environmental sustainability, where possible. Further details on this can be found in our Camden Planning Guidance supplementary document.



Making use of energy from efficient sources

- 13.10 Once a development has been designed to minimise its energy consumption in line with the approach above, the development should assess its remaining energy needs and the availability of any local energy networks or its potential to generate its own energy from low carbon technology. The Council's full approach to local energy generation and local energy networks is set out below (paragraphs 13.16 – 13.22).

Generating renewable energy on-site

- 13.11 Buildings can also generate energy, for example, by using photovoltaic panels to produce electricity, or solar thermal panels, which produce hot water. Once a building and its services have been designed to make sure energy consumption will be as low as possible and the use of energy efficient sources has been considered, the Council will expect developments to achieve a reduction in carbon dioxide emissions of 20% from on-site renewable energy generation (which can include sources of site-related decentralised renewable energy) unless it can be demonstrated that such provision is not feasible. Details on ways to generate renewable energy can be found in our Camden Planning Guidance supplementary document.

Adapting to climate change

- 13.12 It is predicted that in the future we will experience warmer, wetter winters and hotter, drier summers. In addition, Camden is likely to experience more intense rainfall and local flooding, more days with especially poor air quality, increased demand for its open spaces and outdoor pools and increased summer demand for electricity for cooling. To minimise the future need for summer cooling we will expect the design of developments to consider anticipated changes to the climate. For further details on what measures should be considered see policy DP22 – *Promoting sustainable design and construction* in Camden Development Policies. The Council is in discussions with the National Grid regarding future infrastructure improvements including, potentially, a new electricity grid supply point. To help ensure there is adequate water in the future we will require developments to be water efficient. Our overall approach to water conservation and run-off is detailed below.
- 13.13 Camden is fortunate that it contains Hampstead Heath, Primrose Hill and a part of Regent's Park which help reduce long term heating of the city, known as the urban heat island effect, and provide cool space in hot weather. We will continue to protect our open spaces and other green spaces, where possible, and seek to create additional open spaces. We will also continue to protect the borough's trees and encourage the creation of green and brown roofs and green walls, which help to keep local air temperatures lower. For more detail on how we are protecting and improving our open spaces and other green spaces please see policy CS15 – *Protecting and improving our parks and open spaces and encouraging biodiversity*. Policy DP24 – *Securing high quality design* in Camden Development Policies sets out how we will protect gardens, where possible.

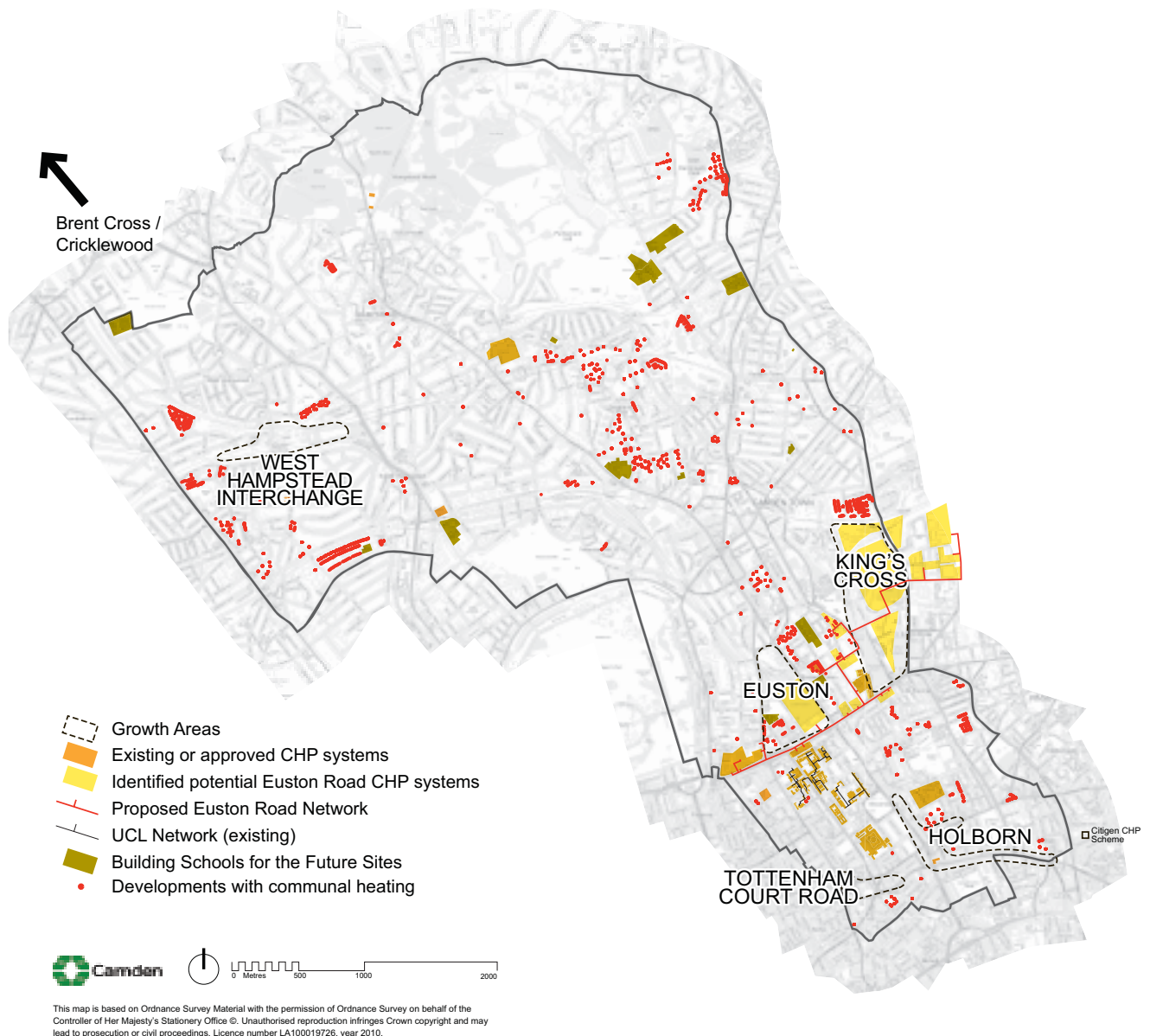
- 13.14 Climatic changes will affect which plant and animal species thrive or decline. The City of London, which is responsible for Hampstead Heath, has identified potential threats to open spaces and biodiversity in its Climate Adaptation Strategy. It will therefore be important for the Council, other owners of open space and developers to consider the adaptation needs of plants and wildlife. The Council is trialling lower maintenance plant species at Waterlow Park and Cumberland Market. For more detail on our approach to biodiversity please see policy CS15.
- 13.15 We will also continue our strong efforts to reduce air pollution through mitigation and reducing traffic. Please see policy CS11 – *Promoting sustainable and efficient travel*. Detail on how we will expect development to take into account climate change is set out in policy DP22 – *Promoting sustainable design and construction* in Camden Development Policies.

Local energy generation and networks

- 13.16 The *Delivering a Low Carbon Camden* report concludes that the most cost-effective way for Camden to meet its carbon reduction targets is through a local energy generation and distribution system served by combined heat and power (CHP). CHP systems typically supply buildings with heat and power (usually electricity) generated on-site or nearby, therefore avoiding the losses which occur in transmitting electricity from plants outside London. CHP is highly efficient and can therefore make a significant contribution to goals to minimise carbon emissions. Cooling can also be incorporated in such systems where there is appropriate demand (known as combined cooling, heating and power or CCHP).
- 13.17 New decentralised energy networks negotiated through the planning system are most likely to begin in, and expand out from, the growth areas of King's Cross, Euston, Tottenham Court Road, West Hampstead Interchange and Holborn due to the expected scale and mix of development. A local energy network fuelled by gas-fired combined heat and power, a fuel cell and renewable sources has been approved as part of the King's Cross redevelopment. There are possibilities to expand this network beyond the border of the site, including into Islington. Camden is also working with the London Development Agency (LDA) and land owners to establish a decentralised energy network along Euston Road and into Islington. Map 4 shows the areas considered most likely to provide development-led decentralised energy networks.
- 13.18 Providing a decentralised energy network in an already built up area is difficult. Although there is currently no extended CHP network in the borough, numerous Council housing estates are already on a community heating system, which can provide a starting point for a wider energy network serviced by CHP. There are also three successful local energy networks in the borough fed by CHP (two serving University College London buildings, one serving two housing developments on Eversholt Street) as well as individual systems at the Swiss Cottage Leisure Centre and the Royal Free Hospital in Gospel Oak and approved schemes at King's Cross, Regent's Place Estate, Southampton Row and Great Ormond Street Hospital. Where decentralised energy networks already exist, development in the area will be required to connect to them, unless it is proven not to be technically feasible or commercially viable.
- 13.19 The Council will require the developers of any large scheme within proximity of a Council housing estate to speak to us about the possibilities of exporting heat to the existing homes. We will also expect developments to export heat to any willing user, where feasible and viable. The largest possible decentralised energy system fed by CHP should be implemented. Where developments in the vicinity of an existing local energy network do not connect to that network or do not include their own CHP system due to feasibility and viability, we will require them to provide the on-site infrastructure for future connection and, where reasonable, a contribution towards laying future connections. The Council is investigating setting up a local energy network fed by CHP for Camden Town Hall, Argyle Street Primary School and two existing housing developments.
- 13.20 We will work with adjoining boroughs to promote connections to new or existing decentralised energy networks and with the Greater London Authority and London Development Agency to provide advice on funding and linking developments and systems. It will be important to provide for future links to decentralised energy networks within developments or across roads and sites where they are likely to be needed, as providing connections later is difficult in built up places like

Camden. See *Community Energy: Urban Planning for a Low Carbon Future* by the Combined Heat and Power Association and the Town and Country Association for more information on community heating, renewable energy and CHP.

Map 4: Combined Heat and Power Network



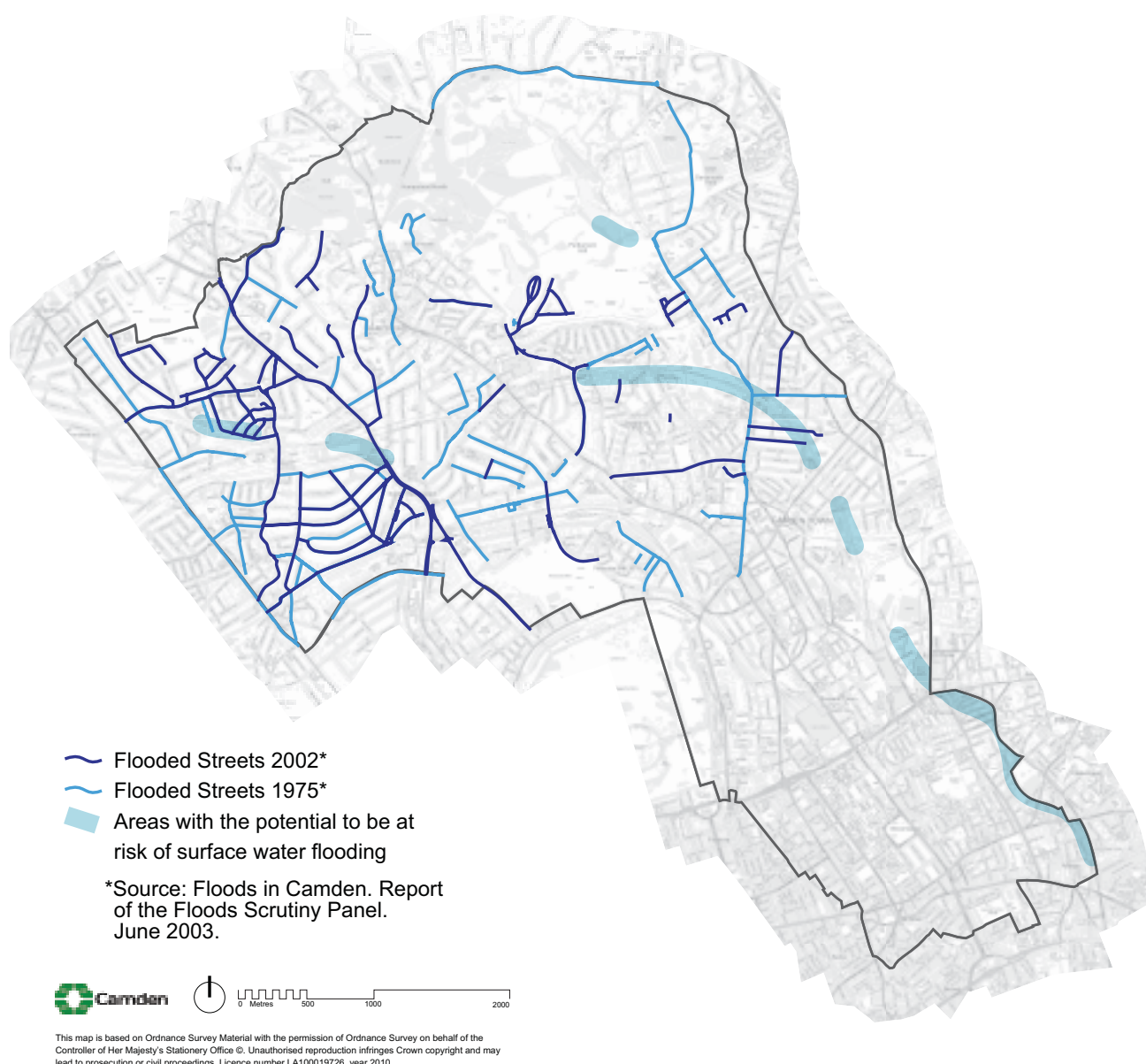
- 13.21 There is growing technical potential to generate heat from waste. The North London Waste Plan will identify future sites for waste facilities in the area (see policy CS18). Given the environmental benefits of using waste for heat, such as less waste going to landfill and turning waste into a resource, the Council will welcome proposals for energy from waste schemes in suitable locations, where they do not cause harm to the amenity of local occupiers.
- 13.22 The Camden Sites Allocations document will identify any areas or sites where we consider zero carbon development can successfully be promoted. These are likely to be areas or sites near one of the likely CHP locations shown on Map 4.



Water and surface water flooding

- 13.23 Water is an important resource which requires energy to clean it to drinking standard and to pump it to every building. Population growth and increased levels of water consumption per person mean that the availability of this resource is under pressure. Our growing population and an increase in hard surfaces also mean there is more foul water and rain water to be dealt with. These issues are predicted to become more important with hotter, drier summers reducing the amount of water available, and wetter winters putting additional pressure on the combined sewer and run-off network. Therefore, the Council will protect the borough's existing water infrastructure to ensure there is adequate water supply, water storage and foul water capability. Camden has five reservoirs, of which four are currently in use for storing drinking water. Thames Water has stated that these sites are likely to require future development and expansion to meet their operational requirements.
- 13.24 Thames Water identified that there will be a shortfall in the water supply for London within the next 30 years if measures are not taken. However, it will seek to ensure an adequate supply through education and metering to reduce consumption, continuing to repair water pipes, the construction of a desalination plant at Beckton and providing a new reservoir, if required (see Appendix 1 – *Key infrastructure programmes and projects* – item 60). To promote responsible consumption, the Council is working with Thames Water to install water meters in homes in Council ownership, as well as requiring all new development to install water efficient devices through the requirements in the Code for Sustainable Homes and BREEAM assessments.
- 13.25 Although Camden has very low risk from flooding from waterways, the North London Strategic Flood Risk Assessment identified several areas in the borough, in particular West Hampstead, that have experienced surface water flooding when existing water infrastructure has not been able to cope with surface and foul water at the same time as the result of heavy rain. The Environment Agency has developed a map showing areas with the potential to flood given the topography and depth of the site. Map 5 shows the parts of the borough that have experienced significant sewer or surface water flooding and the places that are considered to have the potential to be at risk of surface water flooding. The Council will require major developments or development that increases the amount of impervious surfacing to adequately manage the increases in surface water or sewage discharge and take account of known sewer flooding problems by including appropriate mitigation measures to avoid increased drainage problems and flood risk downstream. Our approach to basement/underground development is contained in Camden Development Policies (see policy DP27 – *Basements and lightwells*).

Map 5: Surface Water Flood Risk Potential



- 13.26 Thames Water's initial modelling indicates that local infrastructure improvements are likely to be required for Camden's growth areas, specifically King's Cross and Euston. As the combined sewer across the borough is a network, it will be important that all developments release as little foul and grey water (water from sinks, showers and washing machines) into the combined sewer system as possible by minimising the amount of water used on site and maximising re-use of grey water. British Waterways has identified the Regent's Canal as a source of grey water. Larger developments in areas already suffering from surface water flooding can provide the opportunity for improvements to be made to local infrastructure. Thames Water has advised the Council that the existing strategic, 'trunk' infrastructure is likely to be able to accommodate growth levels. In addition, it is building the Thames Tideway Scheme to improve the capacity of London's combined sewer network. Further information on planned sewerage/waste water infrastructure and sustainable urban drainage systems is provided in Appendix 1 – *Key infrastructure programmes and projects* (items 60 and 61).
- 13.27 The Council's detailed approach to water use and management within developments is set out in Camden Development Policies (policy DP23 – *Water*).



The Council's carbon reduction measures

13.28 The Council is undertaking a range of measures to reduce its own energy use and energy use throughout the borough. These include:

- fuelling 50% of the Council vehicle fleet by liquefied petroleum gas (LPG), electricity or hybrid means;
- installing energy efficiency measures in Council houses;
- using sustainable timber as standard in housing refurbishment;
- investing in cavity wall and roof insulation for Council homes and private sector housing (over 2,000 dwellings have received cavity wall insulation);
- making 'eco-grants' available for various measures, including the installation of solar panels and green roofs;
- our Small steps, Big difference campaign to raise awareness of climate change and encourage changes to behaviour to reduce the borough's environmental impact; and
- supporting the introduction of energy efficient and carbon saving technology. For example, by investing in our own hydrogen fuel cell which is also used as an education tool and by trialling biomethane in our vehicle fleet.

Further Council initiatives are set out in our Climate Change and Environmental Sustainability Delivery Plan 2008-2012.

Key evidence and references

- Delivering a Low Carbon Camden – Carbon Reduction Scenarios to 2050; SEA-Renue; 2007
- Towards a Sustainable Camden. Camden's Environmental Sustainability Delivery Plan 2008-2012
- Camden Sustainability Task Force Report on Energy and Energy Efficiency; 2007
- Camden Together – Camden's Sustainable Community Strategy; 2007 – 2012
- North London Strategic Flood Risk Assessment, Mouchel; 2008
- The London Plan (consolidated with Alterations since 2004); Mayor of London; 2008
- Action Today to Protect Tomorrow – Mayor's Climate Change Action Plan; 2007
- Planning Policy Statement: Planning and Climate Change – Supplement to Planning Policy Statement 1; CLG; 2007
- Planning Policy Statement (PPS) 22: Renewable energy; ODPM; 2004
- Planning Policy Statement 25: Development and Flood Risk, CLG, 2006
- Community Energy: Urban Planning for a Low Carbon Future; The Combined Heat and Power Association and the Town and Country Association 2008
- Hampstead Heath Management Plan Part 1. Towards a Plan for the Heath 2007-2017; City of London & Land Use consultants; 2007

CS14. Promoting high quality places and conserving our heritage

- 14.1 Camden does not have a single built character but is made up of many diverse areas, each with their own identity. The southern part of the borough, which forms part of Central London, is characterised by a high density built environment and complex mix of uses. The central part of the borough contains several town centres surrounded by areas of medium-density housing and some employment uses. The north of the borough is predominantly residential of a lower density with substantial open space at Hampstead Heath. Throughout the borough there are examples of Camden's unique architectural heritage, with many high quality buildings and places, old and new. This is reflected in our large number of conservation areas and listed buildings, which have been recognised for their special architectural or historic interest.
- 14.2 Our overall strategy is to sustainably manage growth in Camden so it meets our needs for homes, jobs and services in a way that conserves and enhances the features that make the borough such an attractive place to live, work and visit. Policy CS14 plays a key part in achieving this by setting out our approach to conserving and, where possible, enhancing our heritage and valued places, and to ensuring that development is of the highest standard and reflects, and where possible improves, its local area. Policy CS13 above and policy DP22 in Camden Development Policies set out our approach to ensuring that design in the borough is sustainable and that schemes include measures to minimise the effects of, and adapt to, climate change.

CS POLICY

CS14 – Promoting high quality places and conserving our heritage

The Council will ensure that Camden's places and buildings are attractive, safe and easy to use by:

- a) requiring development of the highest standard of design that respects local context and character;
- b) preserving and enhancing Camden's rich and diverse heritage assets and their settings, including conservation areas, listed buildings, archaeological remains, scheduled ancient monuments and historic parks and gardens;
- c) promoting high quality landscaping and works to streets and public spaces;
- d) seeking the highest standards of access in all buildings and places and requiring schemes to be designed to be inclusive and accessible;
- e) protecting important views of St Paul's Cathedral and the Palace of Westminster from sites inside and outside the borough and protecting important local views.

Excellence in design

- 14.3 Camden has many special and unique places and historic and modern buildings of the highest quality. As well as preserving this rich heritage, we should also be contributing to it by making sure that we create buildings of equally high quality that will be appreciated by future generations. The design of the places and buildings that make up our local environment affects us all and our quality of life. High quality design is visually interesting and attractive but it is not just about what things look like. Good design makes places that put people first, are welcoming, feel safe and are enjoyable and easy to use for everyone, whether they are living in, working in or just passing through the borough.

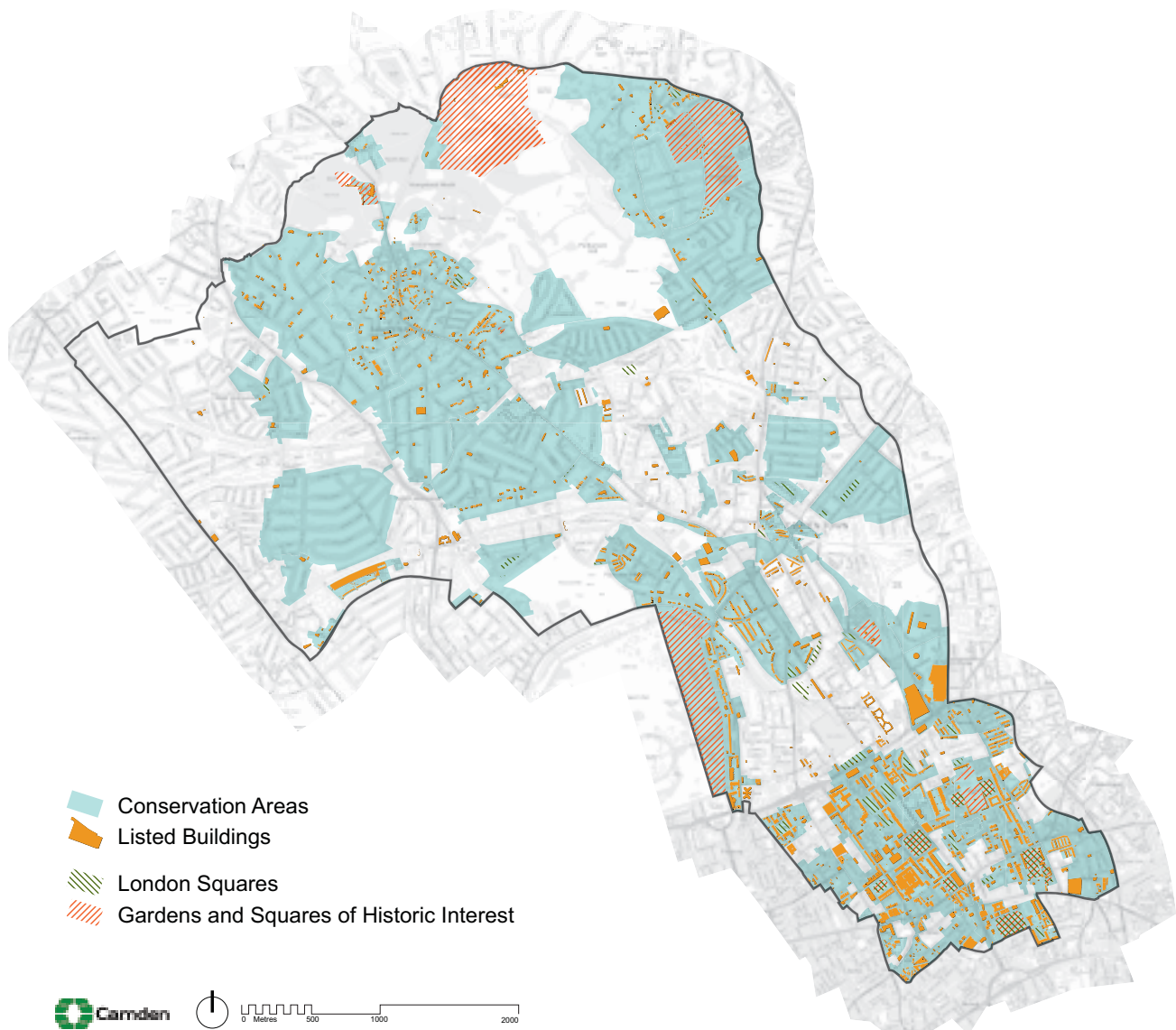


- 14.4 Development schemes should improve the quality of buildings, landscaping and the street environment and, through this, improve the experience of the borough for residents and visitors. The Council will therefore insist on high quality design throughout the borough. In accordance with government guidance in Planning Policy Statement (PPS) 1 – *Delivering Sustainable Development* we will not accept design that is considered inappropriate to its context or which fails to take opportunities to improve the character and quality of an area and the way it functions. Please see Camden Development Policies (policy DP24) for more detailed guidance on our approach to the design of new development and alterations and extensions. When assessing design, we will also take into account government/CABE guidance *By Design – Urban Design in the planning system: towards better practice* and our own Camden Planning Guidance supplementary document.
- 14.5 The Council is working with its partners to promote and celebrate excellence in design and improve public buildings, landscaping and the street environment; for example through the Camden Design Initiative, which seeks to improve public space and the built environment and encourage involvement, awareness and understanding of good design, including the bi-annual Camden Design Awards, which recognise high quality and innovative designs.
- 14.6 Good design is safe and accessible, and responds flexibly to the needs of its users. It creates buildings that have minimal negative impact on the environment, during construction and beyond. The construction and use of buildings currently accounts for around half of national carbon emissions and it is therefore vital that new and redeveloped buildings are designed to have a beneficial impact on their environment. See CS13 – *Tackling climate change through promoting higher environmental standards* and CS17 – *Making Camden a safer place* for our approach to these matters.
- 14.7 High quality design also takes account of its surroundings and what is distinctive and valued about the local area. Camden is made up of a diversity of areas, each with their own distinctive character, created by many elements such as architectural style and layout, social and economic history, landscaping and mix of uses – as summarised in the description of Camden’s character below. As Camden is a densely built-up borough where most development involves the replacement, extension or conversion of existing buildings, taking account of context and local character is particularly important. The Council will therefore expect the design of buildings and places to respond to the local area and its defining characteristics and reinforce or, if appropriate, create local distinctiveness.
- 14.8 While tall buildings offer the opportunity for intensive use, their siting and design should be carefully considered in order to not detract from the nature of surrounding places and the quality of life for those living and working around them. Applications for tall buildings will be assessed against policy CS14 and policies DP24 – *Securing high quality design* and DP25 – *Conserving Camden’s heritage* in Camden Development Policies, along with the full range of policies on mixed use, sustainability, amenity and microclimate. and other relevant policies. Effect on views, impact on local microclimate and provision of communal and private amenity space will also be important considerations.

Camden's heritage

- 14.9 Camden has a rich architectural heritage with many special places and buildings from throughout Camden's history (see map 6). 39 areas, covering much of the borough, are designated as conservation areas, recognising their special architectural or historic interest and their character and appearance. We have prepared conservation area statements, appraisals and management strategies that provide further guidance on the character of these areas. We will take these documents into account as material considerations when we assess applications for planning permission and conservation area consent in these areas.
- 14.10 Over 5,600 buildings and structures in Camden are nationally listed for their special historical or architectural interest, and 53 of the borough's squares are protected by the London Squares Preservation Act 1931. In addition, 14 open spaces in Camden are on English Heritage's Register of Parks and Gardens of Special Historic Interest. The Council will consult with English Heritage over proposals affecting these parks and gardens. We also encourage the restoration and management of Parks and Gardens of Special Historic Interest and London Squares to enhance their value. Camden also has a generally well-preserved archaeological heritage, with 13 identified archaeological priority areas, although this can be vulnerable to modern development and land use.

Map 6: Heritage



- 14.11 We have a responsibility to preserve and, where possible, enhance our heritage of important areas and buildings. Policy DP25 in Camden Development Policies provides more detailed guidance on the Council's approach to protecting and enriching the range of features that make up our built heritage.
- 14.12 Architectural detail, materials, colour and structures such as walls can make a significant contribution to the appearance of an area, but can often be altered without the need for planning permission. Cumulatively, many minor building works can gradually erode the quality of an area and undermine the quality of conservation areas. We will therefore make use of 'Article 4 Directions' in appropriate locations to bring some minor works under planning control. We are intending to introduce such measures in the conservation areas of Belsize, Hampstead, and Swiss Cottage, where loss of historic character through cumulative change is apparent. Primrose Hill conservation area already benefits from a comprehensive Article 4 Direction, which has helped to retain its high quality historic character.

Landscaping and public realm

- 14.13 The quality of our streets and public spaces affects the quality of all our lives. We enjoy being in and passing through attractive, clean and well-maintained places, but are discouraged from walking in and through areas with a poor environment. An enhanced public realm should integrate transport and land use, contribute to improved walking and cycling environments, respect and reinforce local identity and character, attract people to the area and encourage the use of streets and public spaces to create diverse, vibrant and lively places.
- 14.14 The Council is committed to improving Camden's streets and public spaces and has carried out many improvement schemes with many more ongoing and planned. We have produced a Camden Streetscape Design Manual to raise the standard of street works throughout the borough. This sets standards for our own works and provides guidance for other agencies. It encourages respect for local character and promotes high quality, clutter-free design to make streets and public places that are safe and easy to use for all.
- 14.15 A number of studies on streets and spaces have been produced, particularly for the south of the borough (e.g. Bloomsbury, King's Cross and St Giles/Tottenham Court Road). These have been commissioned and funded by a range of organisations (including TfL, LDA, Design for London and UCL) sometimes in partnership with the Council. It is procedurally difficult for the Council to adopt these non-statutory documents as formal planning or other guidance. We will therefore look to draw on the best of this work to create a long-term vision for these areas, emphasising local character and providing a high quality environment for walking, which is formally agreed by the Council.
- 14.16 In order to improve the environment for walking in the borough, Camden is committed to the 'Legible London' concept which aims to improve how easily pedestrians can understand the layout of the capital and find their way around by introducing clear and consistent signage and maps. The programme has begun in Covent Garden and Bloomsbury, and future schemes are anticipated around the borough. Camden has also established a 'Place Shaping Board' to consider the most appropriate ways to shape the services, facilities, infrastructure and public realm to meet the needs of current and future populations (see section 4 – *Delivering and Monitoring the Core Strategy*).
- 14.17 Further information on measures being taken by the Council and its partners to improve the quality of our streets and public places is included in CS2 – *Growth areas*, CS8 – *Promoting Camden's centres and shops*, CS11 – *Promoting sustainable and efficient travel*, CS15 – *Protecting and improving our parks and open spaces and encouraging biodiversity*, and CS17 – *Making Camden a safer place*.
- 14.18 High quality landscaping plays an important role in the attractiveness and character of our surroundings. It can improve the setting of buildings, bring trees and other greenery into built-up areas to relieve the hard landscaping and provide shade, and provide habitats for wildlife. The Council will expect development schemes to provide a high standard of landscaping and boundary features, such as walls and fences. We will encourage appropriate use of landscaping in the form of 'green roofs', 'brown roofs' and 'green walls' which have a number of environmental benefits (e.g. in providing wildlife habitats, in helping to cool and insulate buildings and in retaining water, helping to

reduce flooding), as well as being visually attractive. More detail on our approach to landscaping is set out in the Council's Camden Planning Guidance supplementary document and policy DP22 in Camden Development Policies.

Access

- 14.19 Good access benefits everyone. However, many people are disadvantaged by poor access to facilities and vulnerable and disadvantaged groups, such as the elderly and disabled people, can be particularly affected. Poor access can be caused by difficulties in reaching facilities or by difficulties in using the facilities themselves. The Council requires new buildings and spaces to be inclusive and accessible to all. As accessibility is influenced by perceptions as well as physical factors, buildings should also be designed to appear, as well as be, fully accessible. The Council will require Design and Access Statements for developments to show how the principles of inclusive design, ensuring access for all, have been integrated into the proposed development, and how inclusion will be maintained and managed.
- 14.20 Making roads and pavements and the spaces between buildings fully accessible is as important as making the buildings themselves accessible. The Council will seek improvements for all pedestrians to ensure good quality access and circulation arrangements, including improvement to existing routes and footways. The Camden Streetscape Design Manual and our Camden Planning Guidance supplementary document provide more detailed guidance on this issue.

Views

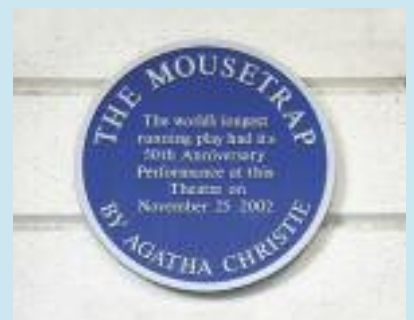
- 14.21 A number of London's most famous and valued views originate in, or extend into, Camden. These are:
- views of St Paul's Cathedral from Kenwood, Parliament Hill and Primrose Hill;
 - views of the Palace of Westminster from Primrose and Parliament Hills; and
 - background views of St Paul's from Greenwich and Blackheath.
- 14.22 The Council will protect these views in accordance with London-wide policy and will resist proposals that would harm them. Where existing buildings that affect a view are redeveloped it is expected that any replacement building will be of a height that does not harm the view. The current framework for protecting these views is set by the London Plan (policies 4B.16 – 4B.18) and the Mayor's London View Management Framework supplementary planning guidance.
- 14.23 The Council will also consider the impact of a scheme, in terms of the townscape, landscape and skyline, on the whole extent of a view ('panorama'), not just the area in the view corridor. Developments should not detract from the panorama as a whole and should fit in with the prevailing pattern of buildings and spaces. They should seek to avoid buildings that tightly define the edges of the viewing corridors and not create a crowding effect around the landmark.
- 14.24 The Council will also seek to protect locally important views that contribute to the interest and character of the borough. These may include:
- views of and from large public parks and open spaces, such as Hampstead Heath, Kenwood Estate, Primrose Hill and Regent's Park, including panoramic views, as well as views of London Squares and historic parks and gardens;
 - views relating to Regent's Canal;
 - views into and from conservation areas; and
 - views of listed and landmark buildings and monuments and statutes (for example, Centrepont, St Stephen's, Rosslyn Hill and St George's, Bloomsbury).
- 14.25 We will seek to ensure that development is compatible with such views in terms of setting, scale and massing and will resist proposals that we consider would cause harm to them. Development will not generally be acceptable if it obstructs important views or skylines, appears too close or too high in relation to a landmark or impairs outlines that form part of the view. Further guidance on important local views is set out in our supplementary planning documents, for example in individual conservation area statements, appraisals and management strategies and the Planning Framework for the Tottenham Court Road Station and St Giles High Street Area.

Camden's character

Camden is characterised by a great richness and variety in its built and natural environment, with a valuable heritage of local, national and international significance. The following section describes the places, buildings and features that give Camden its distinctive character.

The southern part of the borough is where most of Camden's future growth will take place. It forms part of Central London and has a richly varied and dense character. The planned Georgian streets and squares (e.g. Bedford, Russell, Fitzroy) of Bloomsbury are evidence of the early expansion of London in a form that was architecturally groundbreaking. Modest mews developments to the rear of the terraces contrast in scale and are a particularly characteristic type here and elsewhere in the borough. Regents Park and Nash's 1820s residential development sit at the south western boundary of the borough, contrasting with the earlier Georgian developments in the area.

King's Cross and Euston are parts of the borough that are expected to experience the most change and development over the next fifteen years. Railways have had a significant impact on the appearance of the borough from the 19th century to the present day. These brought monumental architecture and inward migration to the borough and their viaducts, cuttings, tunnels and buildings still affect the shape of development in many parts of Camden, in particular to the north of Euston Road. King's Cross was the largest station in England when it opened and is the earliest great London terminus still intact in its original form. St Pancras (by George Gilbert Scott), now the new London terminus for Eurostar, can claim to be Britain's most impressive station in terms of both architecture and engineering and the station's dramatic roof line forms an important local landmark. Euston station, its ancillary accommodation and railway lines have a major impact on the nature of its surroundings and its future redevelopment will create opportunities to improve the local environment and links between neighbouring areas.





The Inns of Court were some of the earliest establishments in the southern part of the borough. The historic buildings, courtyards and squares of Lincoln's Inn and Gray's Inn give a distinctive atmosphere to this part of Camden, and create oases away from surrounding busy roads. Camden's Central London area also contains Seven Dials with its unusual star-shaped street layout and sundial pillar and the brick, semi-industrial buildings and intimate spaces of Hatton Garden, which were developed in the 19th century to house the workshops and offices of the jewellery trade. The area remains an internationally significant jewellery quarter.

Camden is home to a large number of further education establishments and most are located in the southern part of the borough, including the University of London, London School of Tropical Medicine, Central St Martin's College of Art and Design and the Royal Academy of Dramatic Art. These play a significant role in shaping the character and appearance of this part of the borough. The south of the borough also houses a number of nationally important hospitals and medical research institutions, including Great Ormond Street Hospital, the National Hospital for Neurology and Neurosurgery and the Wellcome Trust.



The town centres of Camden Town, Kentish Town and Kilburn High Road are key elements in **the central part of the borough**. These centres developed in a piecemeal fashion along historic routes into London. They are now marked by continuous, close grained development with commercial units at ground floor level on either side of the road, with terraced housing of a similar density on the streets to the east and west, and little open space. Buildings types are generally consistent in appearance, and public houses are frequent landmarks, which echo the original inns and travellers rests along the historic routes. There is a narrow range of scale and height, and dwellings usually have small gardens to front and rear. Camden Town is strongly characterised by its markets and entertainment. These create a strong draw for tourists and influence the style and appearance of development, which is in many cases colourful and individual.

The areas between these major roads and town centres are characterised by speculative, residential development from the mid to late 19th century for the then new middle classes. These show a variety of distinctive architectural forms and scales, with detached and semi-detached houses in classical Italianate form in Belsize and an eclectic variety of styles including neo-Gothic, Queen Anne, Domestic Revival, Arts & Crafts in Fitzjohns/Netherhall, Redington/Frognaal and South Hampstead/Swiss Cottage. Gospel Oak, West Hampstead and the southern parts of Dartmouth Park were developed to a higher density with terraced houses, smaller gardens and have a more urban feel than Camden's other residential areas.

Social housing schemes are also an important element in the borough's built environment. St Andrews House on Saffron Hill is the oldest surviving public housing block in London whilst early 20th century examples include the London County Council's Bourne Estate on Leather Lane. The LLC's Ossulston Estate is considered the most important inner-city estate of the inter-war period. Post-war examples illustrate an architecturally ambitious programme of housing schemes by Camden Council following its creation in 1965, many of which are listed. The characteristic form was a megastructure of stepped terraces. This low rise, high density approach reflected traditional terraced housing, but provided light, privacy and private open space for all levels of accommodation. Examples are Brunswick Centre, and the estates of Fleet Road, Alexandra Road, Maiden Lane and Highgate New Town.

The Regent's Canal runs through the centre of the borough. Although it is often hidden from surrounding areas, it provides an area of nature conservation interest and amenity space along its course through King's Cross and Camden Town to Regent's Park.

The northern part of the borough benefits from the presence of the large open space of Hampstead Heath, which provides amenity and leisure space, a verdant setting to the surrounding development and famous views across London. Hampstead and Highgate are derived from medieval hamlets and have clearly defined village centres which reflect their origins. They have a variety of building types from cottages and terraces to detached houses and grand residences, with a generally densely packed, high quality urban grain of a range of styles, scales and ages. Both areas contain many high quality, architect-designed houses from the 19th and 20th centuries, many of which have become important parts of the local heritage and are listed for their national significance.



Key evidence and references

- Conservation Area Statements/Appraisals/Management Strategies; London Borough of Camden; various dates
- Camden Walking Plan Second Edition 2006
- Camden Streetscape Design Manual 2005
- Planning Policy Guidance 16 – Archaeology and planning; DETR; 1990
- Conservation Principles, Policies and Guidance, English Heritage, 2008
- By Design: Urban Design in the Planning System – Towards Better Practice; DETR/CABE; 2000
- Planning Policy Statement 1 – Delivering Sustainable Development; ODPM; 2005
- Planning Policy Statement 5 – Planning for the Historic Environment; CLG; 2010
- Planning Policy Guidance 15 – Planning and the Historic Environment; DoE; 1994
- The London Plan (consolidated with Alterations since 2004); Mayor of London; 2008
- London View Management Framework Supplementary Planning Guidance; Mayor of London; 2007
- Sustainable design, climate change and the built environment; CABE Briefing; 2007
- Easy Access to Historic Buildings, English Heritage, 2004
- Easy Access to Historic Landscapes, English Heritage, 2005
- Seeing History in the View: Methodology for assessing the heritage value within views, English Heritage, 2008
- Guidance on Tall Buildings, English Heritage/CABE, 2007

