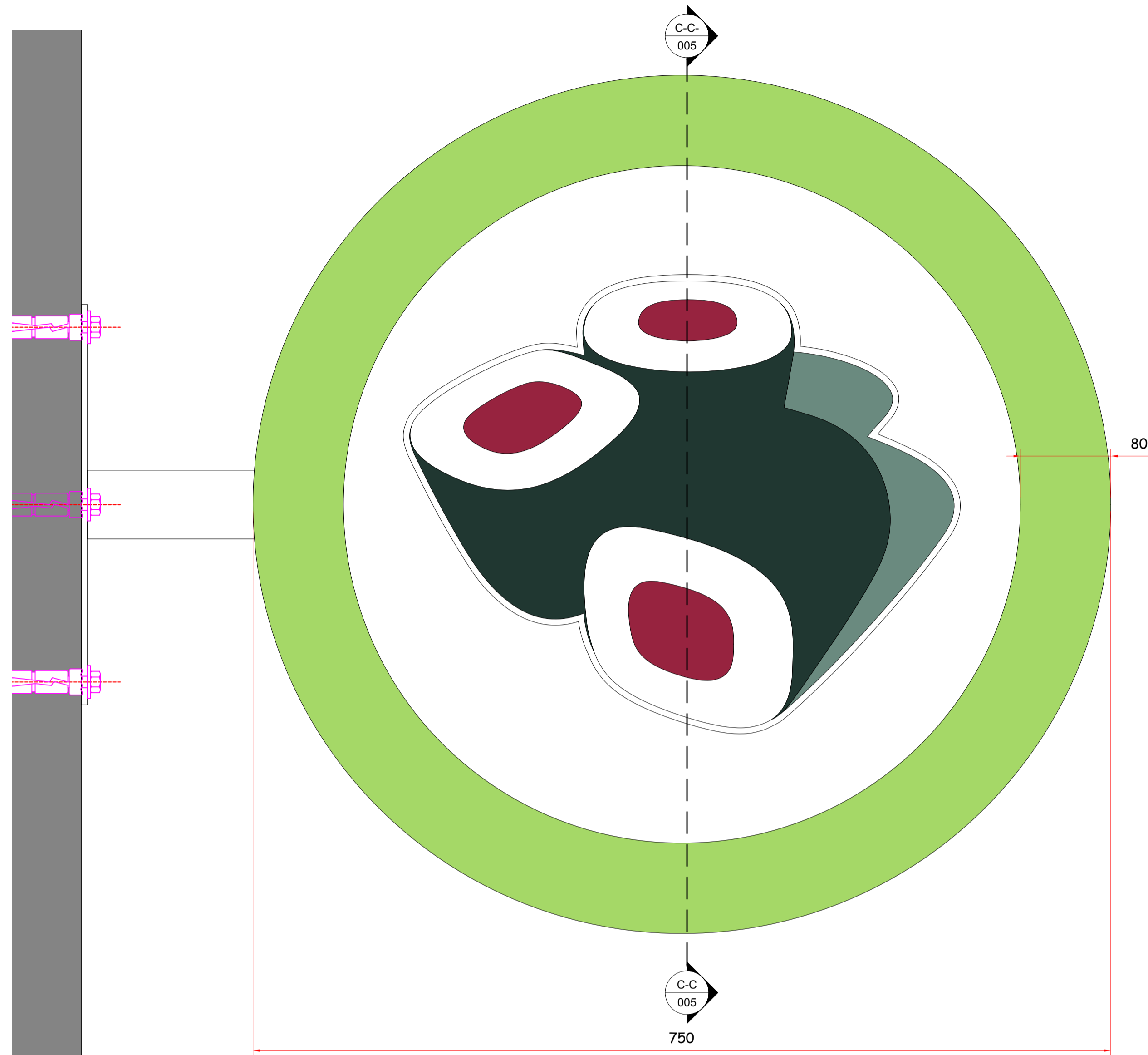
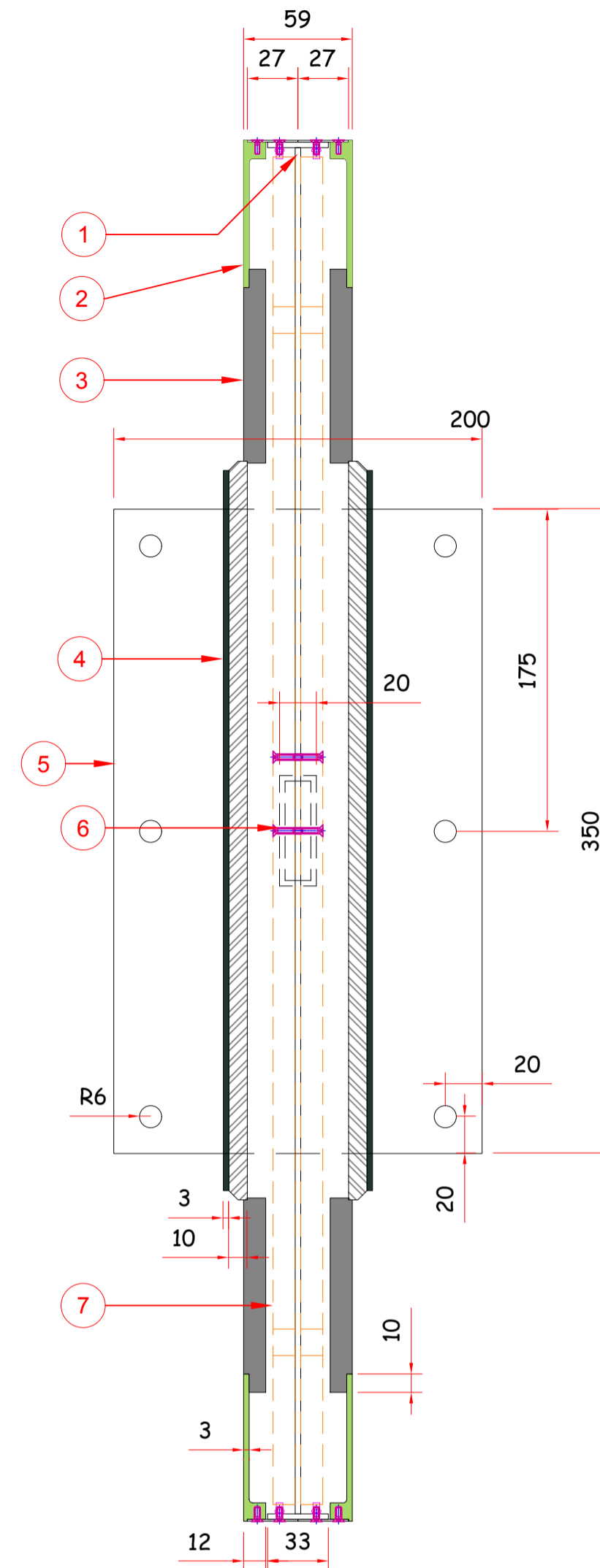


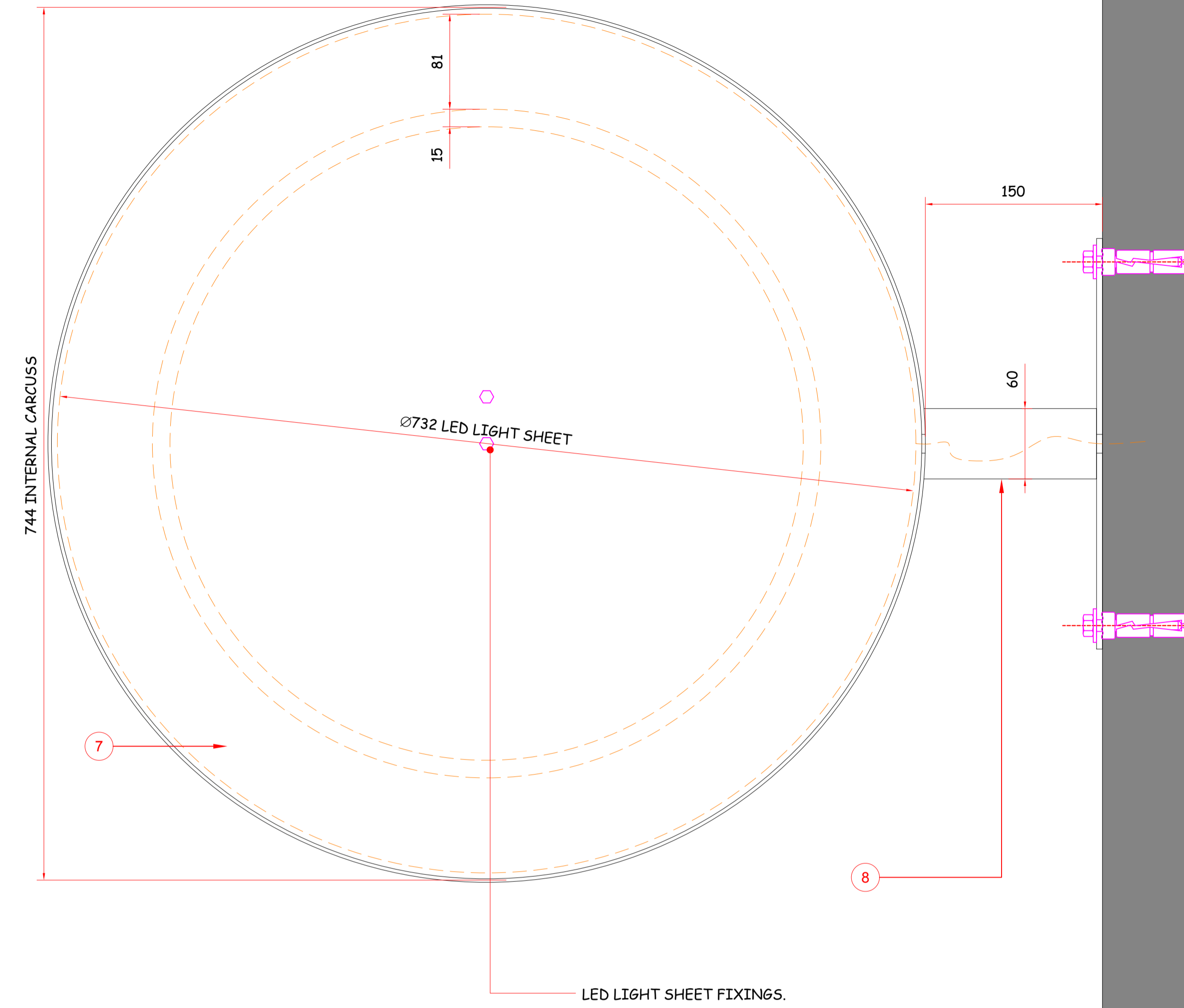
6 PROJECTOR SIDE ELEV.
Scale: 1:3 @ A1



7 SEC. C-C
Scale: 1:3 @ A1



8 INNER FRAME SIDE ELEV.
Scale: 1:3 @ A1




COLOUR REF:

-  PANTONE 5535CVC
-  PANTONE 5555CVC
-  LIGHT GREEN S212 HI-MAC
-  PANTONE 194CVC

PROJECTING SIGN.	
1.	INNER CARCASS FROM 3mm THICK MILD STEEL SPRAYED TO MATCH PANTONE 584 SEMI-GLOSS FINISH EXTERNALLY AND MATT WHITE INTERNALLY. A 1mm THICK MILD STEEL CENTRE PANEL WELDED TO CARCASS SPRAYED MATT WHITE TO HOUSE LED LIGHT SHEETS.
2.	12mm THICK LIGHT GREEN S212 HI-MAC REBATED TO 3mm THICK TO ILLUMINATE & REBATED TO TAKE 1mm THICK MILD STEEL RETURNS SPRAYED SEMI GLOSS PANTONE 584.
3.	12mm THICK S28 ALPINE WHITE HI-MAC NOT TO ILLUMINATE AND STENCIL CUT FOR SUSHI LOGO.
4.	'SUSHI' LOGO FROM 10mm THICK O30 OPAL ACRYLIC WITH A 5mm BEVELLED EDGE ALL ROUND AND FACED WITH 3mm CLEAR ACRYLIC BACKSPRAYED BLOCKOUT IN CORPORATE COLOURS AND BONDED TO OPAL WITH V.H.B. d/S TAPE.
5.	FIXING PLATE FROM 3mm THICK MILD STEEL SPRAYED TO RAL 9003 MATT WHITE.
6.	LED LIGHT SHEET FIXINGS.
7.	2 LED LIGHT SHEETS FIXED TO BOTH SIDES OF CENTRAL PANEL WITH POWER FEED TO COME THROUGH PROJECTING ARM TO TRANSFORMER NOT MORE THAN 2 METRES FROM PROJECTOR.
8.	PROJECTING ARM BRACKET MANUFACTURED FROM 3mm THICK MILD STEEL WALL PLATE 350mm X 200mm WITH A 150mm X 60mm X 20mm BOX SECTION AND 4 X 11mmØ HOLES, TO BE SPRAYED RAL 9003 MATT WHITE, TO BE WELDED TO INNER CARCASS.

COLOURS AND DESIGN
SUBJECT TO FIRST PROTOTYPE.

Survey. Client App. Manufacture.		Rev Description Date	DATE: 03/06/2015 CLIENT: BEDFORD PROJECT: WASABI @ PANCRAS SQUARE SUBJECT: PROJECTING SIGN.	SCALE: as shown @ A1.
	P.J. SIGNS LIMITED, 25th FLOOR, 100 MARKET STREET, BEDFORD, BEDFORDSHIRE MK43 0JF TEL: 01235 834511 FAX: 01235 834512 WEBSITE: WWW.PJSIGNS.COM EMAIL: DRAWING@PJSIGNS.COM	Allow ± 1mm on all measurements unless otherwise stated	DRAWN BY: FRANK.	DRWG. NO. 005/15300
	DWG. SIZE A1.	REVISION: 0	REVISION: 0	REVISION: 0
	REVISION: 0	REVISION: 0	REVISION: 0	REVISION: 0