

101 Existing Third Floor
1: 100

* Current consented scheme has been implemented.



Disclaimer

These drawings, images, plans, photos and/or computer generated images have been prepared in good faith but should not be relied on as a statement of fact and no representation, warranty or undertaking, express or implied, is made by Candy & Candy Limited or its associates, directors, officers, employees or agents as to any of the contents of these drawings, images, plans, photos and/or computer generated images, and neither Candy & Candy Limited nor any of its associates, directors, officers, employees or agents accepts any liability for any reliance upon them, whether under the Property Misdescriptions Act 1991 or otherwise. They are not intended to constitute part of an offer or contract or to create any contractual relationship. The details contained herein, including any quantities, calculations, areas, measurements or distances given, are approximate and indicative only and not to scale. The contents of this document cannot be guaranteed to represent complete information of a scheme. The details may be subject to variations or change without notice. Any reference to alterations to or use of any part of the project is not a statement that any necessary planning, building regulations or other consent has been obtained. These matters must be verified by any buyer/lessee. Any buyer/lessee must satisfy himself by inspection or otherwise as to the correctness of any information given. The copyright, together with all other intellectual property rights, in these drawings, images, plans, photos and/or computer generated images belongs to Candy and Candy Limited or its third party licensor and may not be copied, altered, published, transmitted, sold, distributed or in any way used or exploited either in whole or in part.

Notes

Rev	Date	Name	Revision Notes

Project Title

7 CAMBRIDGE GATE

Drawing Description

Existing Third Floor General Arrangement

Drawing Number

PL101

Scale

A3

Date Drawn

31/10/14

Drawn By

CW

Checked By

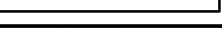
SP

Purpose Of Issue

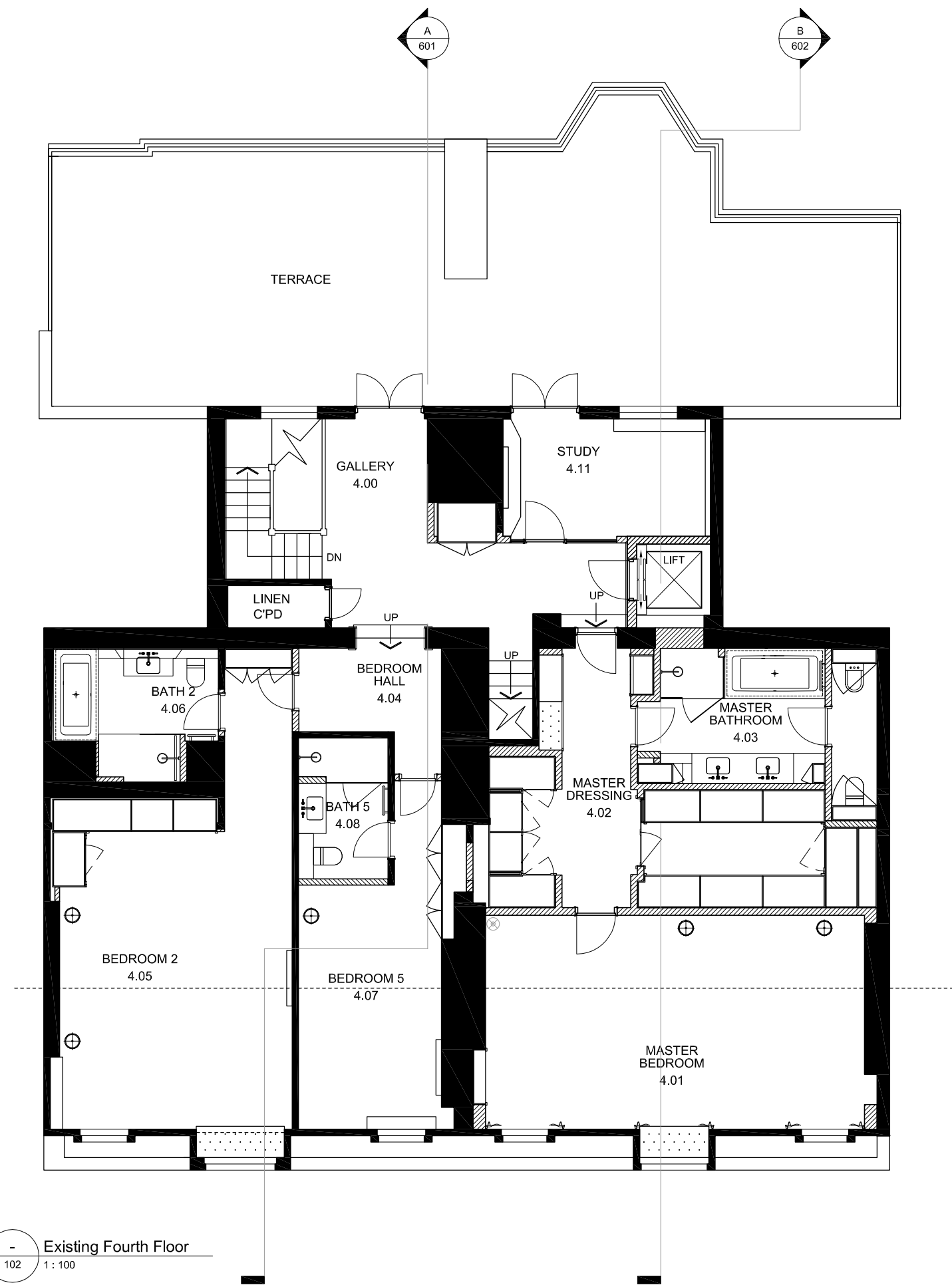
Planning

Revision

Global Headquarters
Candy & Candy Limited
23 Hanover Square
London W1S 1JB
Tel: +44 (0)20 7590 1900
Fax: +44 (0)20 7590 1901
Web: www.candyandcandy.com
E-mail: info@candyandcandy.com

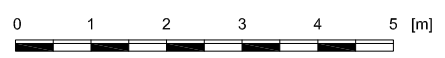


M:\Property Drawings & Details\1000 - C&C Projects\1007 - Cambridge Gate\07 - Planning\Resubmission\Fabbing Drawings\15_0050.dwg



- Existing Fourth Floor
102 1:100

* Current consented scheme has been implemented.



Disclaimer
These drawings, images, plans, photos and/or computer generated images have been prepared in good faith but should not be relied on as a statement of fact and no representation, warranty or undertaking, express or implied, is made by Candy & Candy Limited or its associates, directors, officers, employees or agents as to any of the contents of these drawings, images, plans, photos and/or computer generated images, and neither Candy & Candy Limited nor any of its associates, directors, officers, employees or agents accepts any liability for any reliance upon them, whether under the Property Misdescriptions Act 1991 or otherwise. They are not intended to constitute part of an offer or contract or to create any contractual relationship. The details contained herein, including any quantities, calculations, areas, measurements or distances given, are approximate and indicative only and not to scale. The contents of this document cannot be guaranteed to represent complete intentions/descriptions of a scheme. The details may be subject to variations or change without notice. Any reference to alterations to or use of any part of the project is not a statement that any necessary planning, building regulations or other consent has been obtained. These matters must be verified by any buyer/lessee. Any buyer/lessee must satisfy himself by inspection or otherwise as to the correctness of any information given. The copyright, together with all other intellectual property rights, in these drawings, images, plans, photos and/or computer generated images belongs to Candy and Candy Limited or its third party licensor and may not be copied, altered, published, transmitted, sold, distributed or in any way used or exploited either in whole or in part.

Notes

Rev	Date	Name	Revision Notes

Project Title
7 CAMBRIDGE GATE

Drawing Description
Existing
Fourth Floor
General Arrangement

Drawing Number
PL102

Scale
A3

Date Drawn
31/10/14

Drawn By
CW

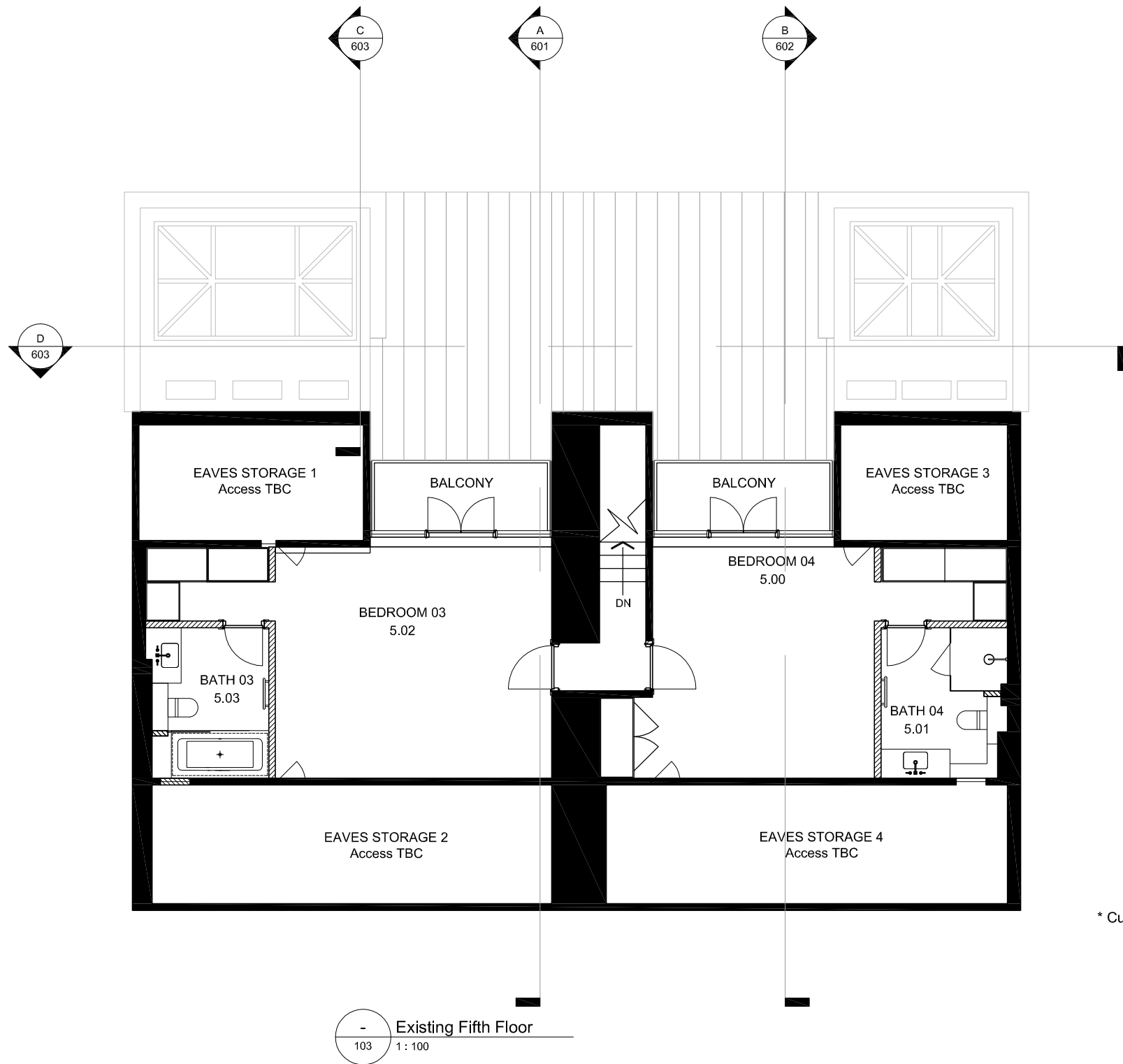
Checked By
SP

Purpose Of Issue	Revision
Planning	

Global Headquarters
Candy & Candy Limited
23 Hanover Square
London W1S 1JB
Tel: +44 (0)20 7590 1900
Fax: +44 (0)20 7590 1901
Web: www.candyandcandy.com
E-mail: info@candyandcandy.com



M:\Projects\Drawings & Details\1000 - C&C Projects\1007-7 Cambridge Gate\15_0508 Planning\Resubmission\Fabing Drawings\15_0508.dwg



* Current consented scheme has been implemented.

Disclaimer
 These drawings, images, plans, photos and/or computer generated images have been prepared in good faith but should not be relied on as a statement of fact and no representation, warranty or undertaking, express or implied, is made by Candy & Candy Limited or its associates, directors, officers, employees or agents as to any of the contents of these drawings, images, plans, photos and/or computer generated images, and neither Candy & Candy Limited nor any of its associates, directors, officers, employees or agents accepts any liability for any reliance upon them, whether under the Property Misdescriptions Act 1991 or otherwise. They are not intended to constitute part of an offer or contract or to create any contractual relationship. The details contained herein, including any quantities, calculations, areas, measurements or distances given, are approximate and indicative only and not to scale. The contents of this document cannot be guaranteed to represent complete information of a scheme. The details may be subject to variations or change without notice. Any reference to alterations to or use of any part of the project is not a statement that any necessary planning, building regulations or other consent has been obtained. These matters must be verified by any buyer/lessee. Any buyer/lessee must satisfy himself by inspection or otherwise as to the correctness of any information given. The copyright, together with all other intellectual property rights, in these drawings, images, plans, photos and/or computer generated images belongs to Candy and Candy Limited or its third party licensor and may not be copied, altered, published, transmitted, sold, distributed or in any way used or exploited either in whole or in part.

Notes

Rev	Date	Name	Revision Notes

Project Title
 7 CAMBRIDGE GATE

Drawing Description
 Existing
 Fifth Floor
 General Arrangement

Drawing Number
 PL103

Scale
 A3

Date Drawn
 31/10/14

Drawn By
 CW

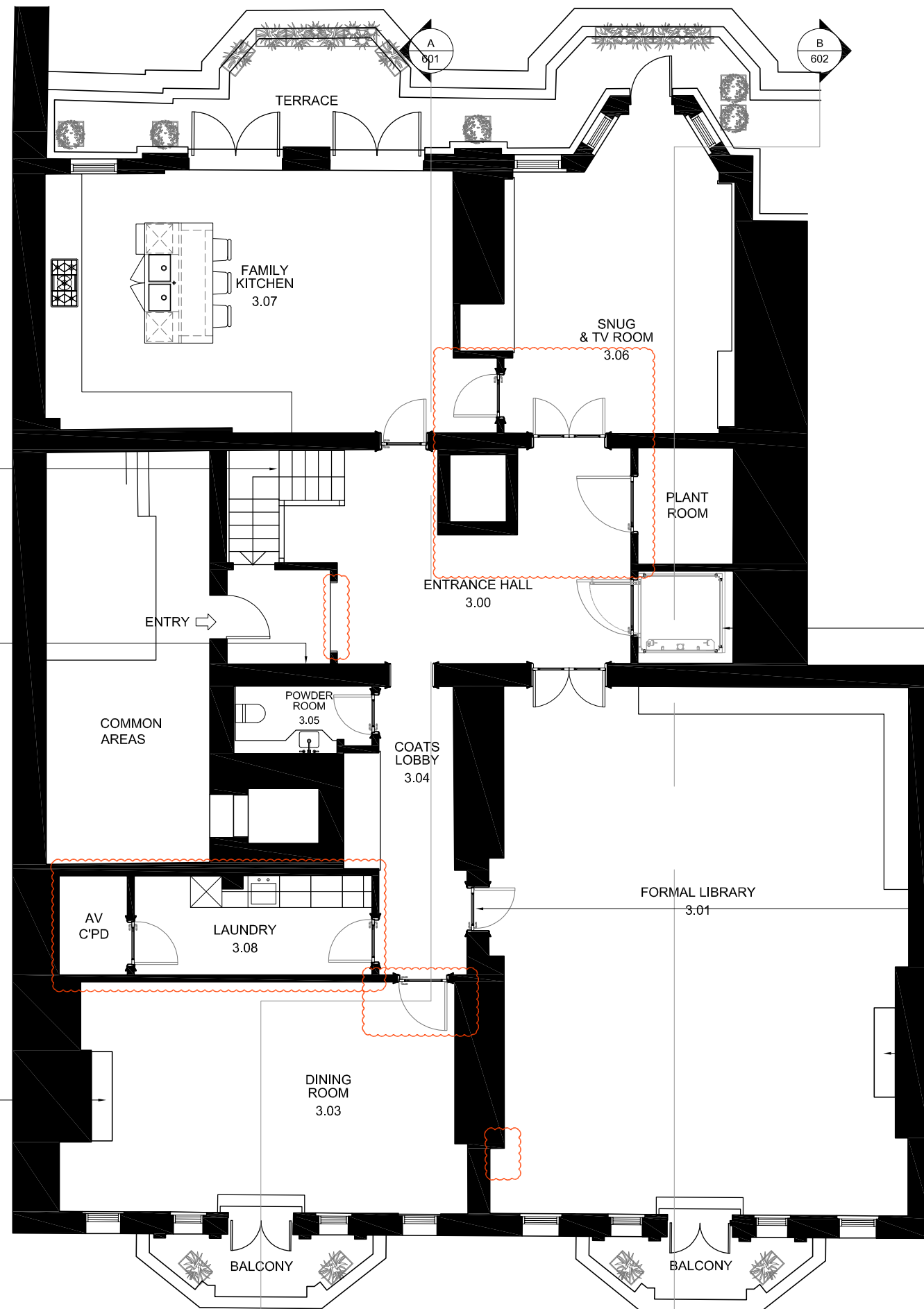
Checked By
 SP

Purpose Of Issue	Revision
Planning	

Global Headquarters
 Candy & Candy Limited
 23 Hanover Square
 London W1S 1JB
 Tel: +44 (0)20 7590 1900
 Fax: +44 (0)20 7590 1901
 Web: www.candyandcandy.com
 E-mail: info@candyandcandy.com



M:\Projects\Drawings & Details\1000 - CAC Projects\10077 - Cambridge Gate\10_0008 Planning\Rebuild\10077-Proposed Drawings\10_0008.dwg



Existing main stairwell to be refurbished with new handrail and balustrade spindles - to replace non-original existing.

Existing doorway to be filled in

New fireplace to replace existing; Style to be within keeping with period of property.

New platform lift between levels 3 & 4.

New opening between Formal Library & Coats Lobby

New fireplace to Formal Reception. Style to be in keeping with period of property.

Highlighted changes from existing scheme

Proposed Third Floor
301
1: 100



Disclaimer
These drawings, images, plans, photos and/or computer generated images have been prepared in good faith but should not be relied on as a statement of fact and no representation, warranty or undertaking, express or implied, is made by Candy & Candy Limited or its associates, directors, officers, employees or agents as to any of the contents of these drawings, images, plans, photos and/or computer generated images, and neither Candy & Candy Limited nor any of its associates, directors, officers, employees or agents accepts any liability for any reliance upon them, whether under the Property Misdescriptions Act 1991 or otherwise. They are not intended to constitute part of an offer or contract or to create any contractual relationship. The details contained herein, including any quantities, calculations, areas, measurements or distances given, are approximate and indicative only and not to scale. The contents of this document cannot be guaranteed to represent complete information of a scheme. The details may be subject to variations or change without notice. Any reference to alterations to or use of any part of the project is not a statement that any necessary planning, building regulations or other consent has been obtained. These matters must be verified by any buyer/lessee. Any buyer/lessee must satisfy himself by inspection or otherwise as to the correctness of any information given. The copyright, together with all other intellectual property rights, in these drawings, images, plans, photos and/or computer generated images belongs to Candy & Candy Limited or its third party licensor and may not be copied, altered, published, transmitted, sold, distributed or in any way used or exploited either in whole or in part.

Notes

Rev	Date	Name	Revision Notes

Project Title
7 CAMBRIDGE GATE

Drawing Description
Proposed
Third Floor
General Arrangement

Drawing Number
PL301

Scale
A3

Date Drawn
05/05/15

Drawn By
MT

Checked By
SP

Purpose Of Issue	Revision
Planning	

Global Headquarters
Candy & Candy Limited
23 Hanover Square
London W1S 1JB
Tel: +44 (0)20 7590 1900
Fax: +44 (0)20 7590 1901
Web: www.candyandcandy.com
E-mail: info@candyandcandy.com





Existing main stairwell to be refurbished with new handrail and balustrade spindles - to replace non-original existing.

Glazed partition to study, to allow natural light into the Gallery

New platform lift between levels 3 & 4.

Highlighted changes from existing scheme

Dashed Line indicates existing bulkhead; ceiling steps up by 512mm (varies to 493mm)

- Proposed Fourth Floor
401 1: 100



Disclaimer
These drawings, images, plans, photos and/or computer generated images have been prepared in good faith but should not be relied on as a statement of fact and no representation, warranty or undertaking, express or implied, is made by Candy & Candy Limited or its associates, directors, officers, employees or agents as to any of the contents of these drawings, images, plans, photos and/or computer generated images, and neither Candy & Candy Limited nor any of its associates, directors, officers, employees or agents accepts any liability for any reliance upon them, whether under the Property Misdescriptions Act 1991 or otherwise. They are not intended to constitute part of an offer or contract or to create any contractual relationship. The details contained herein, including any quantities, calculations, areas, measurements or distances given, are approximate and indicative only and not to scale. The contents of this document cannot be guaranteed to represent complete information of a scheme. The details may be subject to variations or change without notice. Any reference to alterations to or use of any part of the project is not a statement that any necessary planning, building regulations or other consent has been obtained. These matters must be verified by any buyer/lessee. Any buyer/lessee must satisfy himself by inspection or otherwise as to the correctness of any information given. The copyright, together with all other intellectual property rights, in these drawings, images, plans, photos and/or computer generated images belongs to Candy and Candy Limited or its third party licensor and may not be copied, altered, published, transmitted, sold, distributed or in any way used or exploited either in whole or in part.

Notes

Rev	Date	Name	Revision Notes

Project Title
7 CAMBRIDGE GATE

Drawing Description
Proposed
Fourth Floor
General Arrangement

Drawing Number
PL401

Scale
A3

Date Drawn
05/05/15

Drawn By
MT

Checked By
SP

Purpose Of Issue	Revision
Planning	

Global Headquarters
Candy & Candy Limited
23 Hanover Square
London W1S 1JB
Tel: +44 (0)20 7590 1900
Fax: +44 (0)20 7590 1901
Web: www.candyandcandy.com
E-mail: info@candyandcandy.com

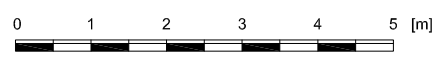


M:\Projects\Drawings & Details\000 - CAD\Projects\007-7 Cambridge Gate\07-008 Planning\Resubmission\Proposed Drawings\14_0505_15.dwg

M:\Projects\Drawings & Details\1000 - C&C Projects\1007-7 Cambridge Gate\15-0508 Planning Resubmission\Proposed Drawings\15_0508.dwg



- Proposed Fifth Floor
501 1 : 100



Disclaimer
These drawings, images, plans, photos and/or computer generated images have been prepared in good faith but should not be relied on as a statement of fact and no representation, warranty or undertaking, express or implied, is made by Candy & Candy Limited or its associates, directors, officers, employees or agents as to any of the contents of these drawings, images, plans, photos and/or computer generated images, and neither Candy & Candy Limited nor any of its associates, directors, officers, employees or agents accepts any liability for any reliance upon them, whether under the Property Misdescriptions Act 1991 or otherwise. They are not intended to constitute part of an offer or contract or to create any contractual relationship. The details contained herein, including any quantities, calculations, areas, measurements or distances given, are approximate and indicative only and not to scale. The contents of this document cannot be guaranteed to represent complete information of a scheme. The details may be subject to variations or change without notice. Any reference to alterations to or use of any part of the project is not a statement that any necessary planning, building regulations or other consent has been obtained. These matters must be verified by any buyer/lessee. Any buyer/lessee must satisfy himself by inspection or otherwise as to the correctness of any information given. The copyright, together with all other intellectual property rights, in these drawings, images, plans, photos and/or computer generated images belongs to Candy and Candy Limited or its third party licensor and may not be copied, altered, published, transmitted, sold, distributed or in any way used or exploited either in whole or in part.

Notes

Rev	Date	Name	Revision Notes

Project Title
7 CAMBRIDGE GATE

Drawing Description
Proposed
Fifth Floor
General Arrangement

Drawing Number
PL501

Scale
A3

Date Drawn
05/05/15

Drawn By
MT

Checked By
SP

Purpose Of Issue	Revision
Planning	

Global Headquarters
Candy & Candy Limited
23 Hanover Square
London W1S 1JB
Tel: +44 (0)20 7590 1900
Fax: +44 (0)20 7590 1901
Web: www.candyandcandy.com
E-mail: info@candyandcandy.com

