

7 Cambridge Gate
Design Document to Support Listed Building Application

Issue Date: 05 June 2015

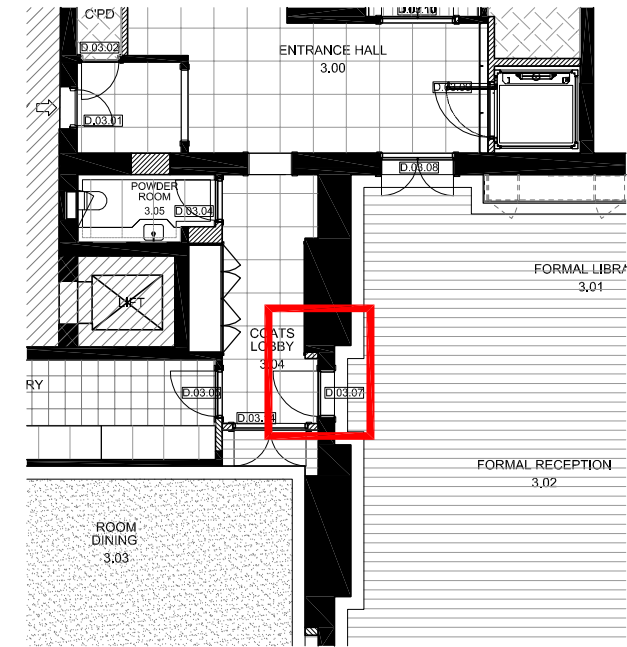
7 Cambridge Gate
Design Document to Support Listed Building Application

Issue Date: 05 June 2015

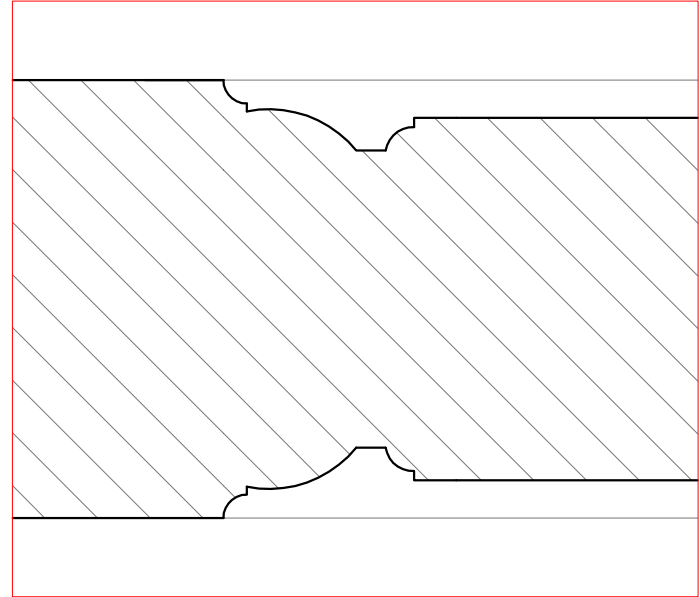
New Doorway to Reception

DISCLAIMER:
In accordance with our duties under the Misrepresentation Act 1967 and the Mis-description Act 1991, these details have been prepared in good faith but are not intended to constitute part of an offer of contract or create any contractual relationship. No description or information of any kind provided by Candy and Candy or its Agents, whether written or verbal, contained in these Particulars or elsewhere ("Information") may be relied upon as a statement of representation, warranty or fact. Neither Candy & Candy nor its Agents have any authority to make any representation or warranty and accordingly any information is given entirely without responsibility on the part of Candy & Candy, its Agents or the seller. Any plans, photos, and computer generated images shown are indicative and cannot be guaranteed to represent the complete interiors/exterior of a scheme. Any Areas, measurements or distances given are approximate only. Any products and materials shown or indicated are indicative only and may be subject to variations or change. It is not possible to scale from these drawings. Any reference to alterations to or use of any part of the property is not a statement that any necessary planning, building regulations or other consent has been obtained. These matters must be verified by any buyer/lessee. Any buyer/lessee must satisfy himself by inspection or otherwise as to the correctness of any information given.
© All rights reserved to Candy & Candy.

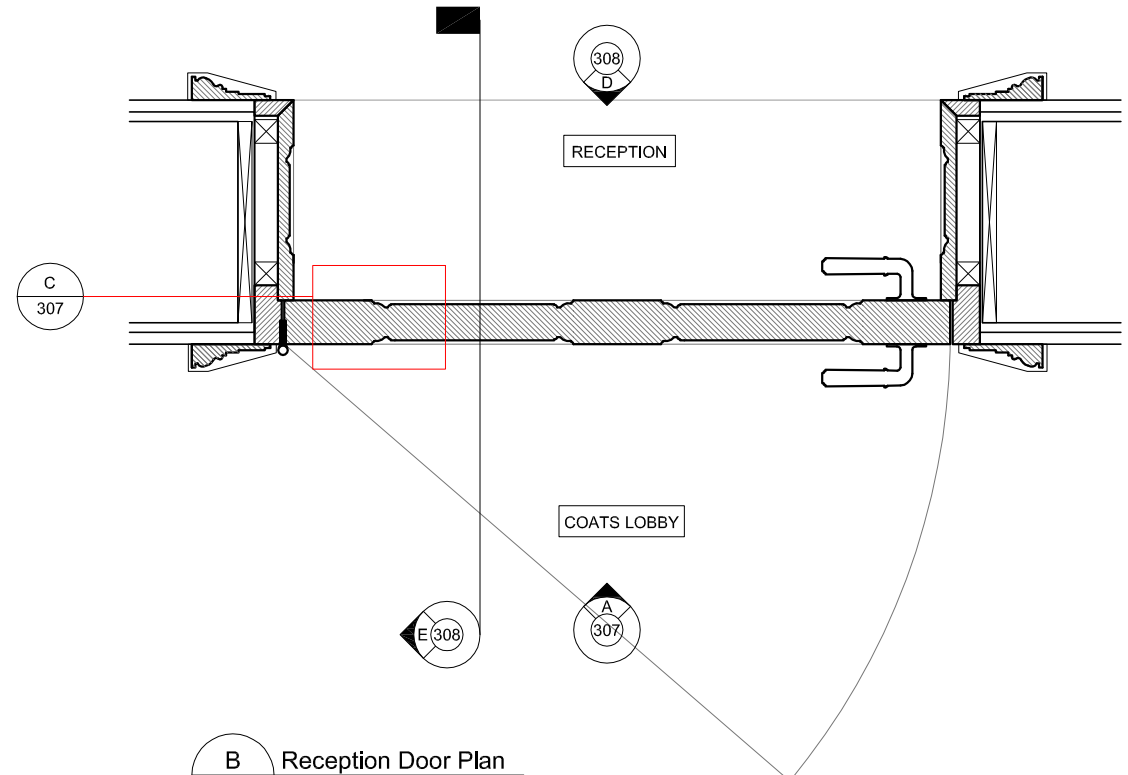
NOTES:



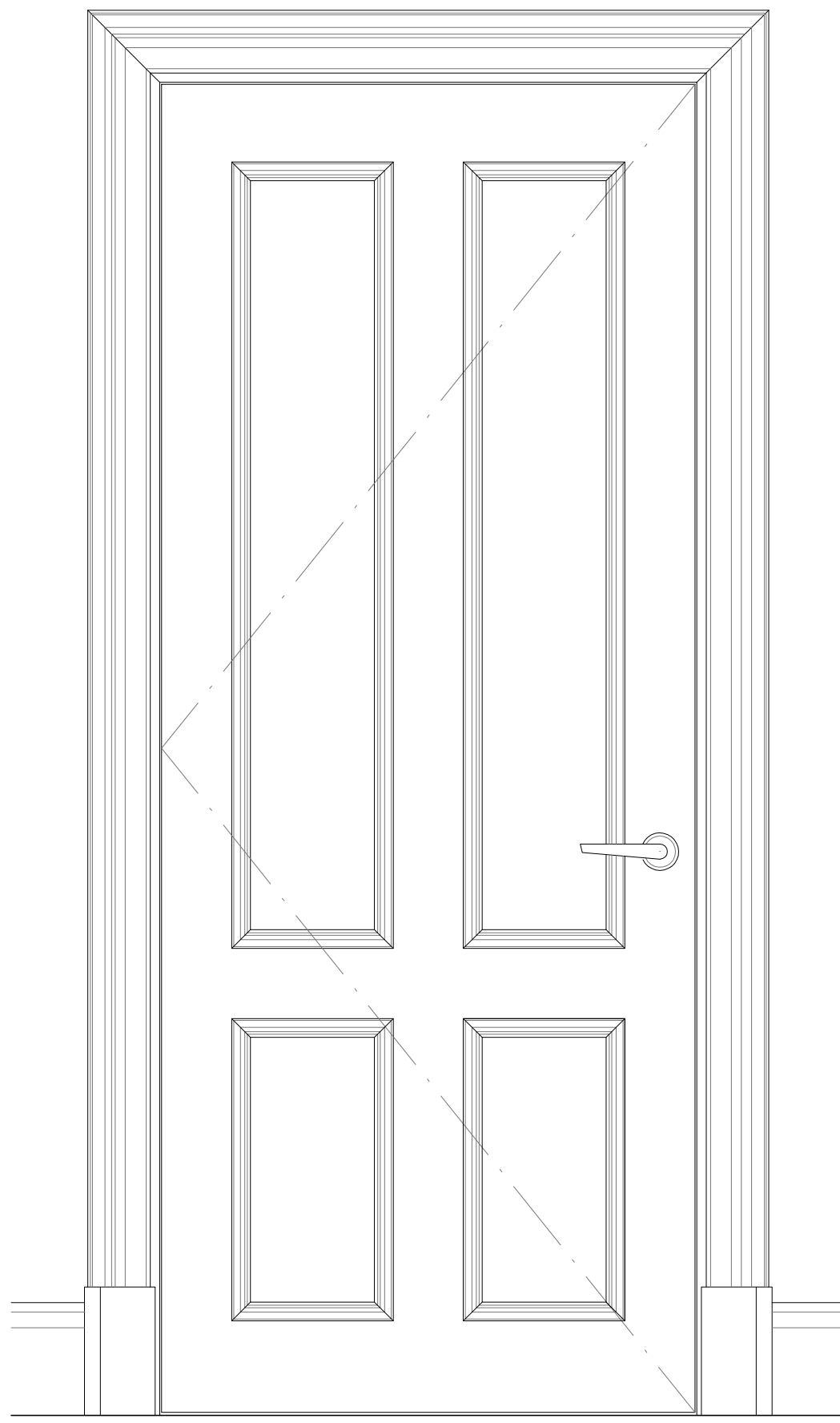
KP Reception Door Key Plan
PL307 1: 150



C Reception Door Moulding Detail
PL307 1: 1



B Reception Door Plan
PL307 1: 10



A Reception Door Elevation (Lobby side)
PL307 1: 10

REV: BY: DATE: DESCRIPTION:

PROJECT CODE:

PROJECT TITLE:
Flat 4, 7 Cambridge Gate

DRAWING TITLE:
Reception Door Elevations & Details

DRAWN BY: **CW** CHECKED BY: **SP**

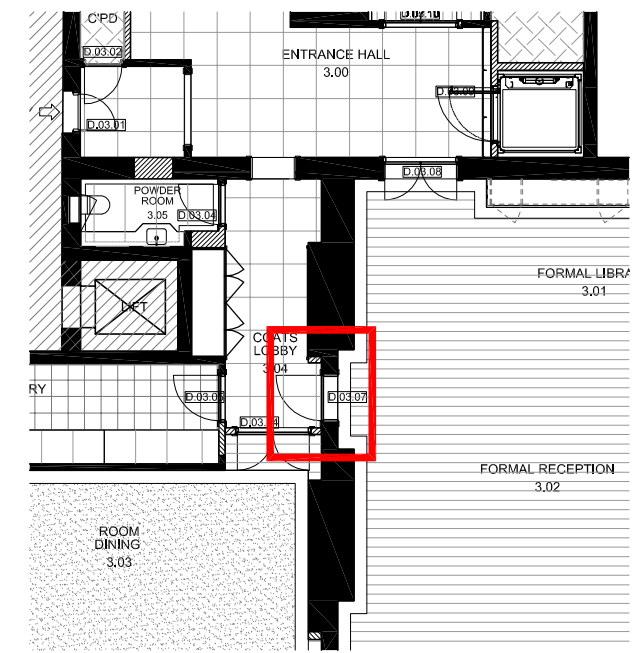
ISSUED FOR:
Planning

SCALE: **A3** DATE: **19/01/15**

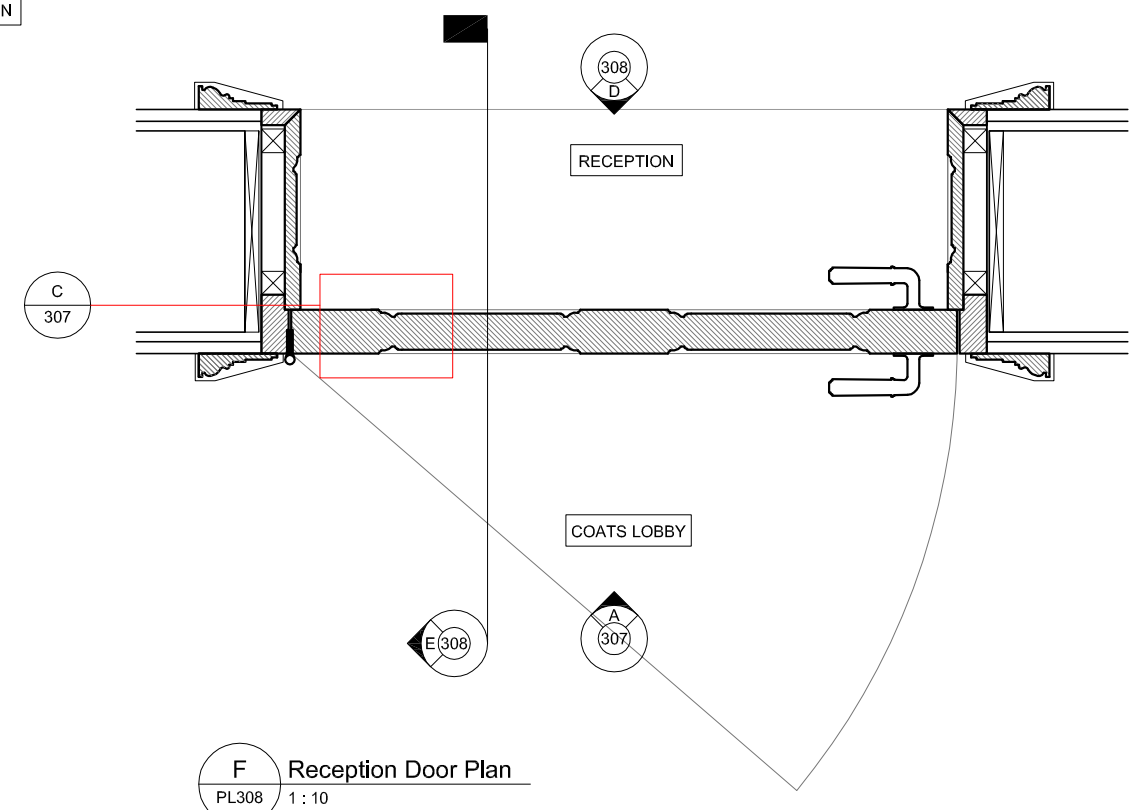
DRAWING NO: **PL 307** REVISION: **-**

DISCLAIMER:
In accordance with our duties under the Misrepresentation Act 1967 and the Mis-description Act 1991, these details have been prepared in good faith but are not intended to constitute part of an offer of contract or create any contractual relationship. No description or information of any kind provided by Candy and Candy or its Agents, whether written or verbal, contained in these Particulars or elsewhere ("Information") may be relied upon as a statement of representation, warranty or fact. Neither Candy & Candy nor its Agents have any authority to make any representation or warranty and accordingly any information is given entirely without responsibility on the part of Candy & Candy, its Agents or the seller. Any plans, photos, and computer generated images shown are indicative and cannot be guaranteed to represent the complete interiors/exterior of a scheme. Any Areas, measurements or distances given are approximate only. Any products and materials shown or indicated are indicative only and may be subject to variations or change. It is not possible to scale from these drawings. Any reference to alterations to or use of any part of the property is not a statement that any necessary planning, building regulations or other consent has been obtained. These matters must be verified by any buyer/lessee. Any buyer/lessee must satisfy himself by inspection or otherwise as to the correctness of any information given. © All rights reserved to Candy & Candy.

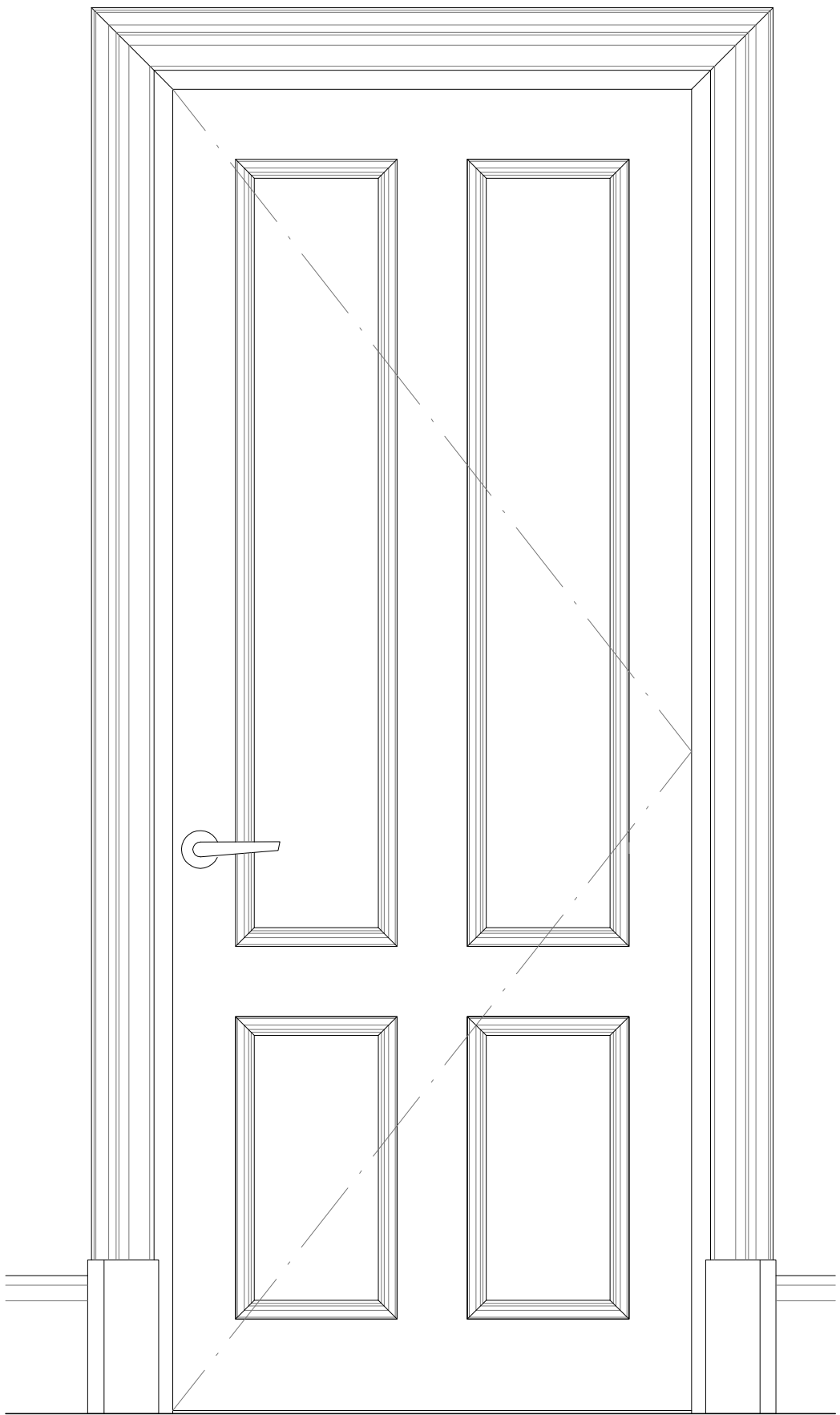
NOTES:



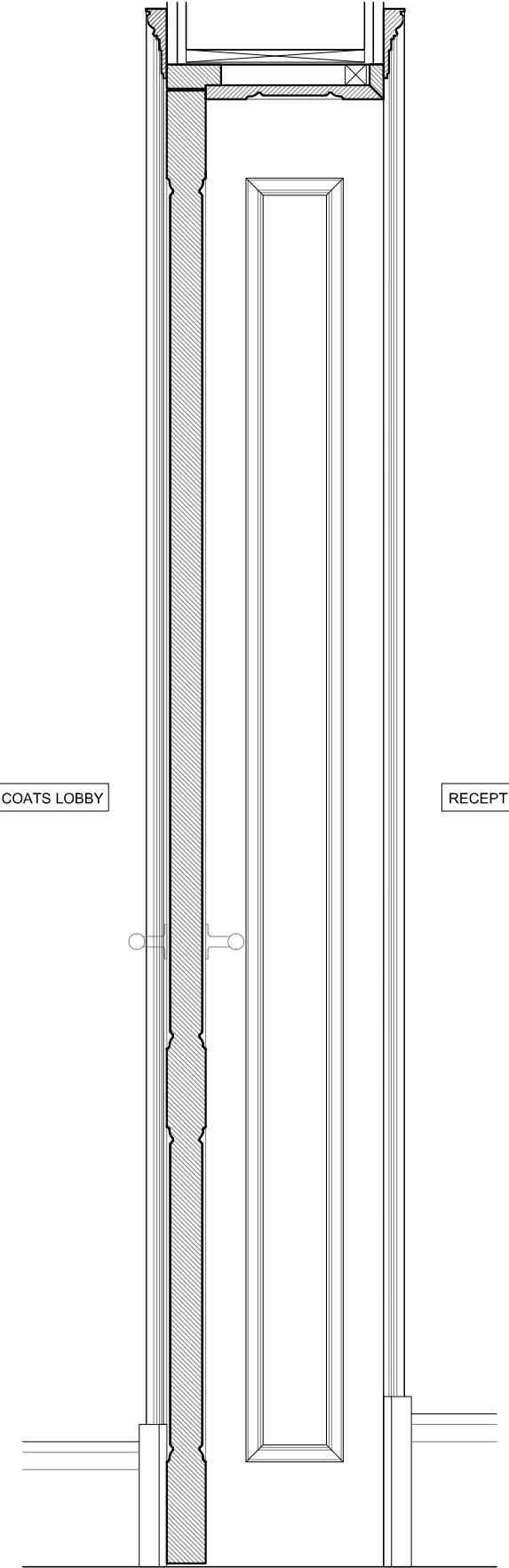
KP Reception Door Key Plan
PL307 1: 150



F Reception Door Plan
PL308 1: 10



D Reception Door Elevation (Reception side)
PL308 1: 10



E Reception Door Reveal Detail
PL308 1: 10

REV:	BY:	DATE:	DESCRIPTION:

PROJECT CODE:
PROJECT TITLE:
Flat 4, 7 Cambridge Gate

DRAWING TITLE:
Reception Door Elevations & Details

DRAWN BY: CW	CHECKED BY: SP
ISSUED FOR: Planning	
SCALE: A3	DATE: 19/01/15
DRAWING NO: PL 308	REVISION: -

7 Cambridge Gate
Design Document: Architectural Profiles

Revision B (P) 06.05.2015

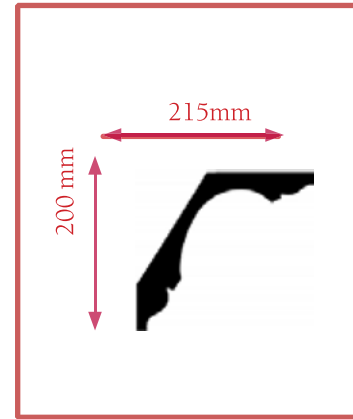
7 Cambridge Gate Design Document: Architectural Profiles

Revision B (P) 06.05.2015

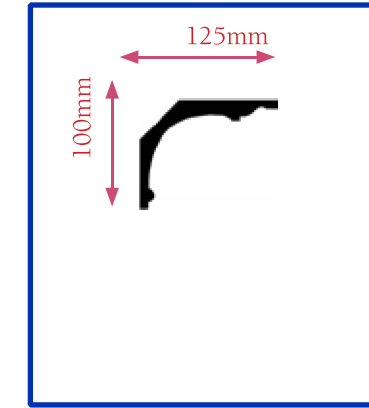
Cornices



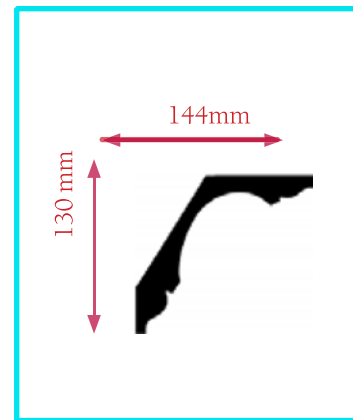
Type 1



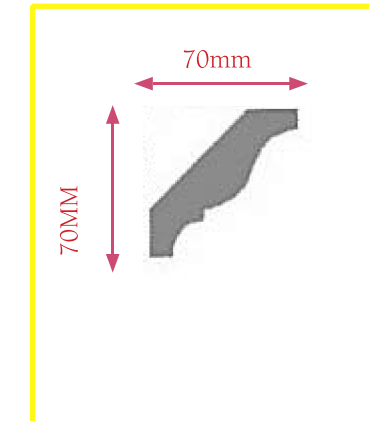
Type 2



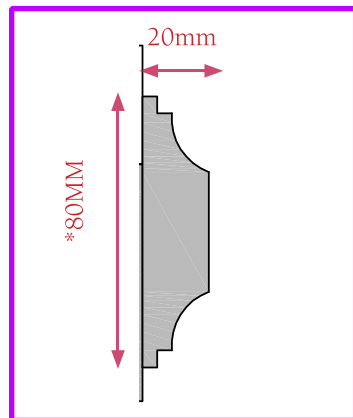
Type 3



Type 4



Type 5



7 Cambridge Gate Design Document: Architectural Profiles

Revision B (P) 06.05.2015

Ceiling Profiles:

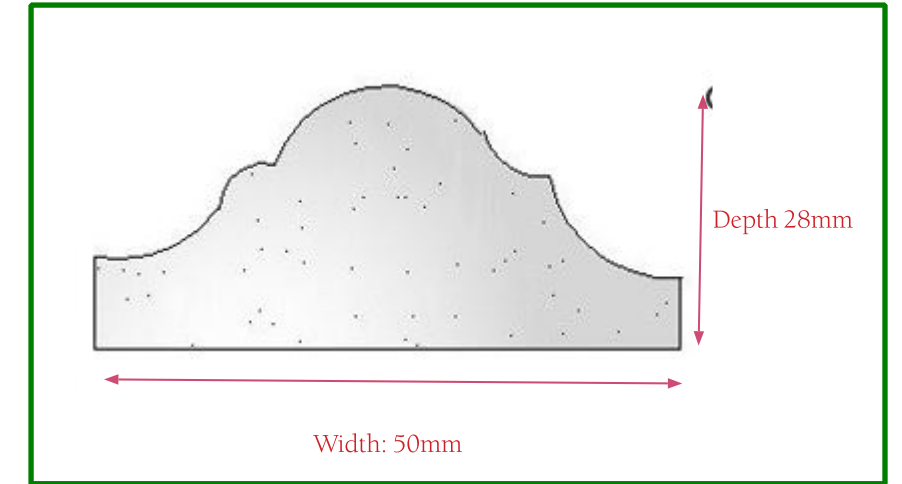
TYPE 6

Celing Rose
3rd Floor
Formal Reception , Formal Library &
Dining Room
Miles & Wilde
MWCR6
Diametre 905mm



TYPE 7

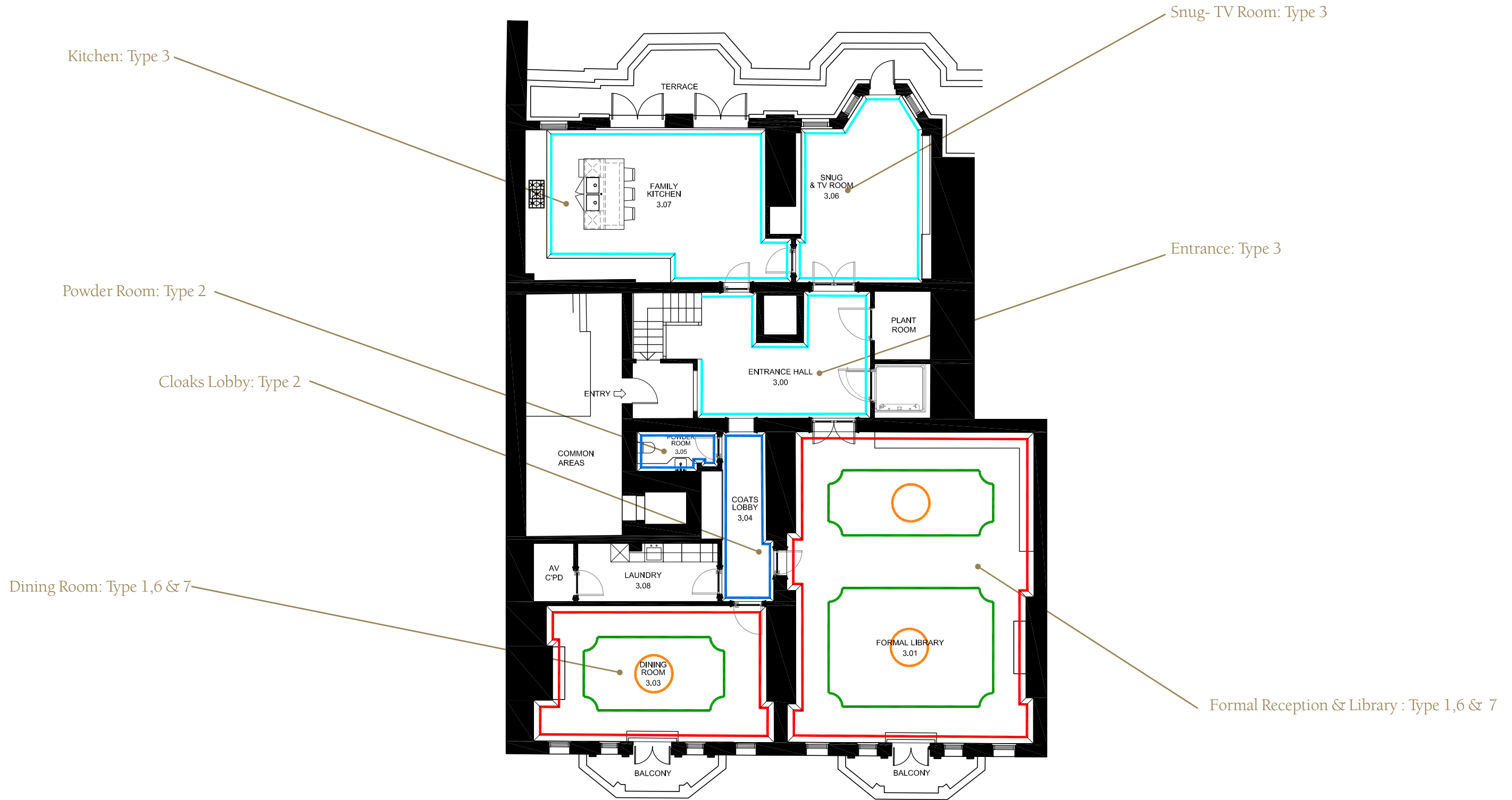
Celing Moulding
3rd Floor
Formal Reception , Formal Library &
Dining Room
ukplaster.com
Panel Mould Small Palin Runn P11
NB: Bespoke Dims



7 Cambridge Gate Design Document: Architectural Profiles

Revision B (P) 06.05.2015

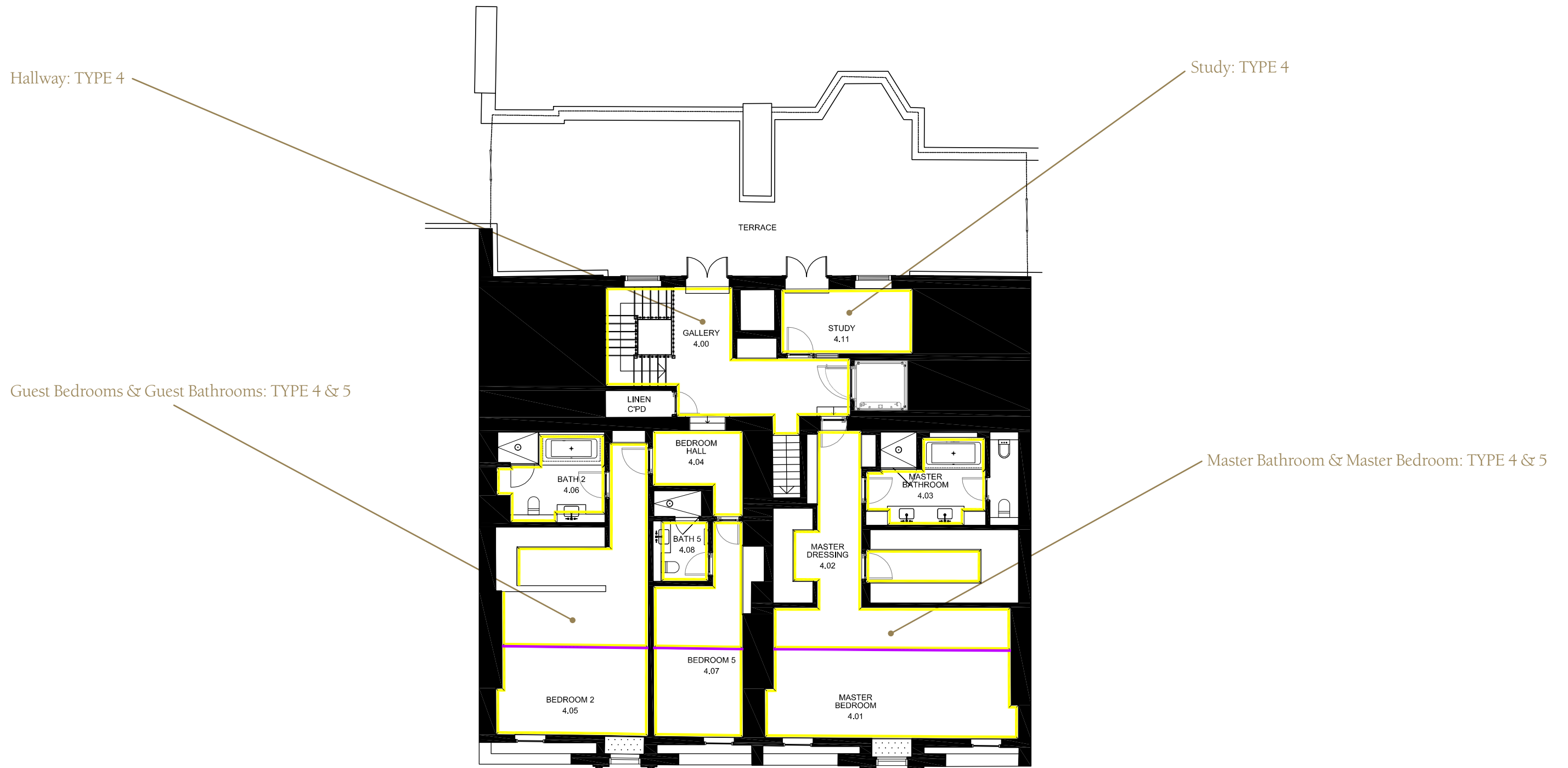
Cornices: First Floor



7 Cambridge Gate Design Document: Architectural Profiles

Revision B (P) 06.05.2015

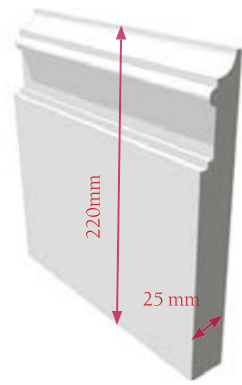
Cornices: 2nd Floor



7 Cambridge Gate Design Document: Architectural Profiles

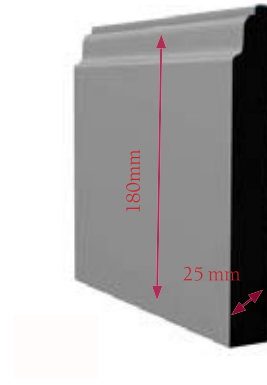
Revision B (P) 06.05.2015

Skirting & Architrave Profiles:



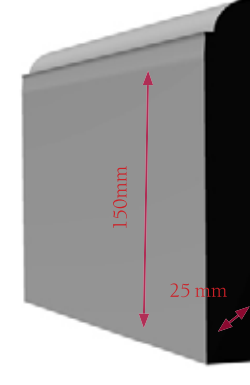
Skirting Type 1

3rd Floor
Formal Reception & Dining Room,
Hallway



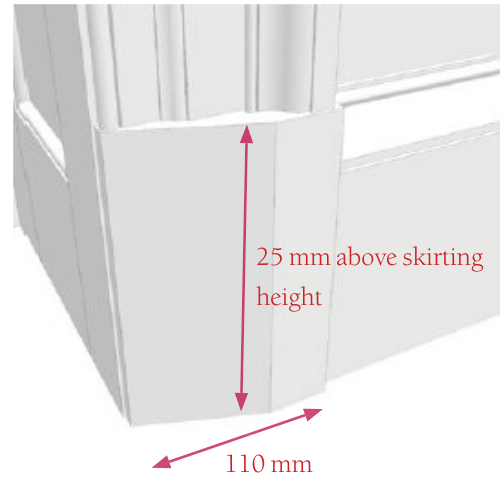
Skirting Type 2

3rd Floor : Entrance Hall, Staircase, Snug,

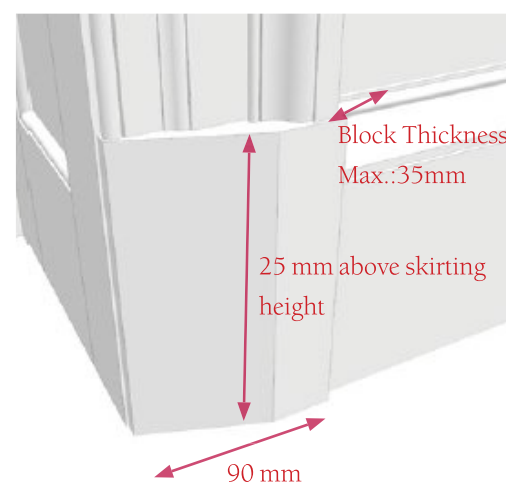


Skirting Type 3

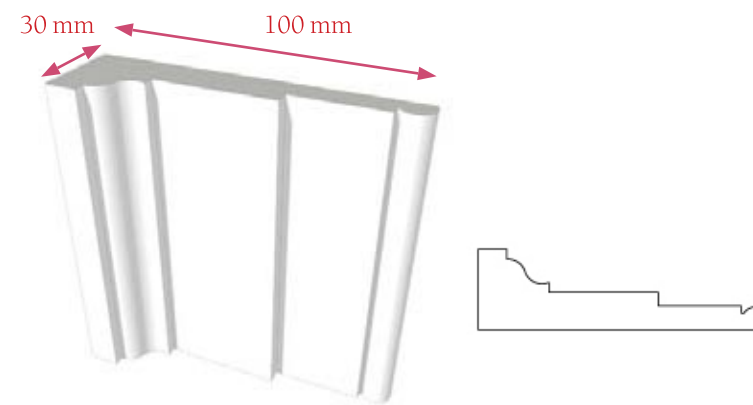
4th Floor & 5th Floor :
Master Bedroom, Guest Bedroom, Bedroom
3 & 4



Plinth Block
3rd Floor : All doors

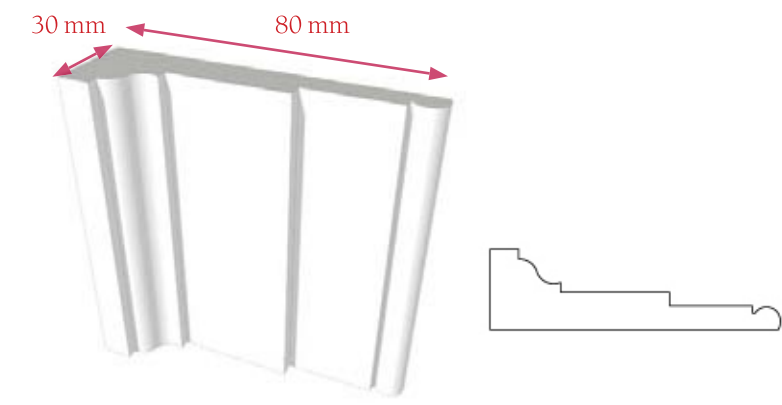


Plinth Block
4th & 5th Floors : All door



Door Architrave

3rd Floor : All Doors
NB: please square off edges to door frame for paint to look clean & sharp



Door Architrave

4th & 5th Floors : All doors
NB: please square off edges to door frame for paint to look clean & sharp

7 Cambridge Gate
Design Document to Support Listed Building Application

Issue Date: 05 June 2015

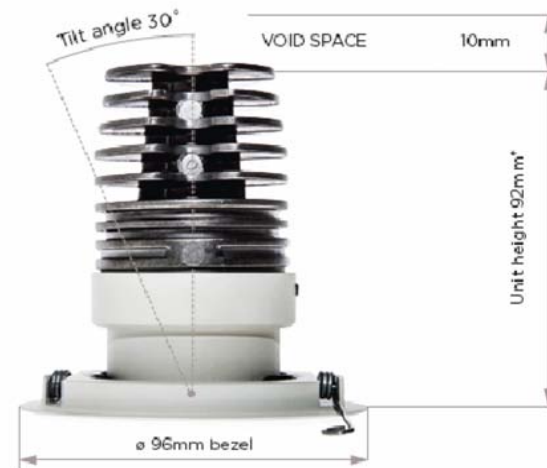
Details of New Lights & Light Switches



Downlight bezel is white, light textured powder coated

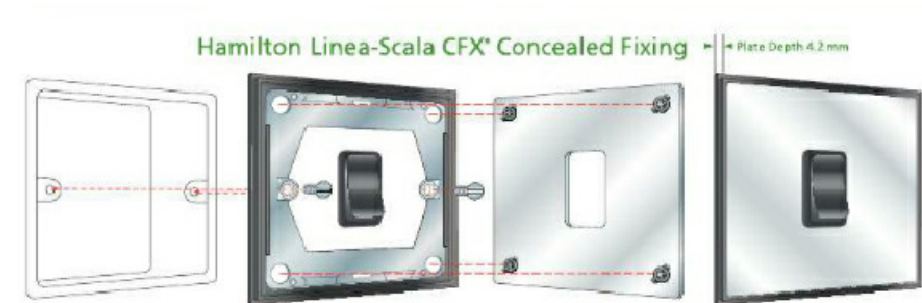


Hamilton Linea-Scala CFX Richmond Bronze range



*Low void option available to give a unit height of 78mm.
ø 83mm cut out.

A Proposed Downlight Details
306 NTS



B Proposed Light Switch Details
306 NTS

Disclaimer

These drawings, images, plans, photos and/or computer generated images have been prepared in good faith but should not be relied on as a statement of fact and no representation, warranty or undertaking, express or implied, is made by Candy & Candy Limited or its associates, directors, officers, employees or agents as to any of the contents of these drawings, images, plans, photos and/or computer generated images, and neither Candy & Candy Limited nor any of its associates, directors, officers, employees or agents accepts any liability for any reliance upon them, whether under the Property Misdescriptions Act 1991 or otherwise. They are not intended to constitute part of an offer or contract or to create any contractual relationship. The details contained herein, including any quantities, calculations, areas, measurements or distances given, are approximate and indicative only and not to scale. The contents of this document cannot be guaranteed to represent complete information of a scheme. The details may be subject to variations or change without notice. Any reference to alterations to or use of any part of the project is not a statement that any necessary planning, building regulations or other consent has been obtained. These matters must be verified by any buyer/lessee. Any buyer/lessee must satisfy himself by inspection or otherwise as to the correctness of any information given. The copyright, together with all other intellectual property rights, in these drawings, images, plans, photos and/or computer generated images belongs to Candy and Candy Limited or its third party licensor and may not be copied, altered, published, transmitted, sold, distributed or in any way used or exploited either in whole or in part.

Notes

Rev	Date	Name	Revision Notes

Project Title
7 CAMBRIDGE GATE

Drawing Description
Details and Specification
Light Switch and Downlights

Drawing Number
PL306

Scale
A3

Date Drawn
05/05/15

Drawn By
MT

Checked By
SP

Purpose Of Issue	Revision
Planning	

Global Headquarters
Candy & Candy Limited
23 Hanover Square
London W1S 1JB
Tel: +44 (0)20 7590 1900
Fax: +44 (0)20 7590 1901
Web: www.candyandcandy.com
E-mail: info@candyandcandy.com



7 Cambridge Gate
Design Document to Support Listed Building Application

Issue Date: 05 June 2015

Floor Finishes Layouts



All external refurbishment finishes works to match existing

Timber stairs with carpet runner.

New stone hearth to fireplace

Inset carpet in timber border

All external refurbishment finishes works to match existing

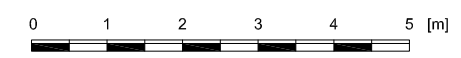
METAL FLOOR THRESHOLDS

- TH-01 Stone/Timber
- TH-02 Timber/Carpet
- TH-03 Carpet/Stone, Tile
- TH-04 Timber/Vinyl

- TILE - Ceramic Tile
- SS - Stone Slab
- ST - Stone Tile
- Floor Paint
- CPT - Fitted Carpet
- INS - Inset Carpet
- RUG - Rug Carpet
- TI - Timber
- VINYL - Vinyl

New stone hearth to fireplace.

- Third Floor Finishes Plan
311 1:100



Disclaimer
These drawings, images, plans, photos and/or computer generated images have been prepared in good faith but should not be relied on as a statement of fact and no representation, warranty or undertaking, express or implied, is made by Candy & Candy Limited or its associates, directors, officers, employees or agents as to any of the contents of these drawings, images, plans, photos and/or computer generated images, and neither Candy & Candy Limited nor any of its associates, directors, officers, employees or agents accepts any liability for any reliance upon them, whether under the Property Misdescriptions Act 1991 or otherwise. They are not intended to constitute part of an offer or contract or to create any contractual relationship. The details contained herein, including any quantities, calculations, areas, measurements or distances given, are approximate and indicative only and not to scale. The contents of this document cannot be guaranteed to represent complete information of a scheme. The details may be subject to variations or change without notice. Any reference to alterations to or use of any part of the project is not a statement that any necessary planning, building regulations or other consent has been obtained. These matters must be verified by any buyer/lessee. Any buyer/lessee must satisfy himself by inspection or otherwise as to the correctness of any information given. The copyright, together with all other intellectual property rights, in these drawings, images, plans, photos and/or computer generated images belongs to Candy & Candy Limited or its third party licensor and may not be copied, altered, published, transmitted, sold, distributed or in any way used or exploited either in whole or in part.

Notes

Rev	Date	Name	Revision Notes

Project Title
7 CAMBRIDGE GATE

Drawing Description
Floor Finishes Plan
Third Floor

Drawing Number
PL311

Scale
A3

Date Drawn
05/05/15

Drawn By
MT

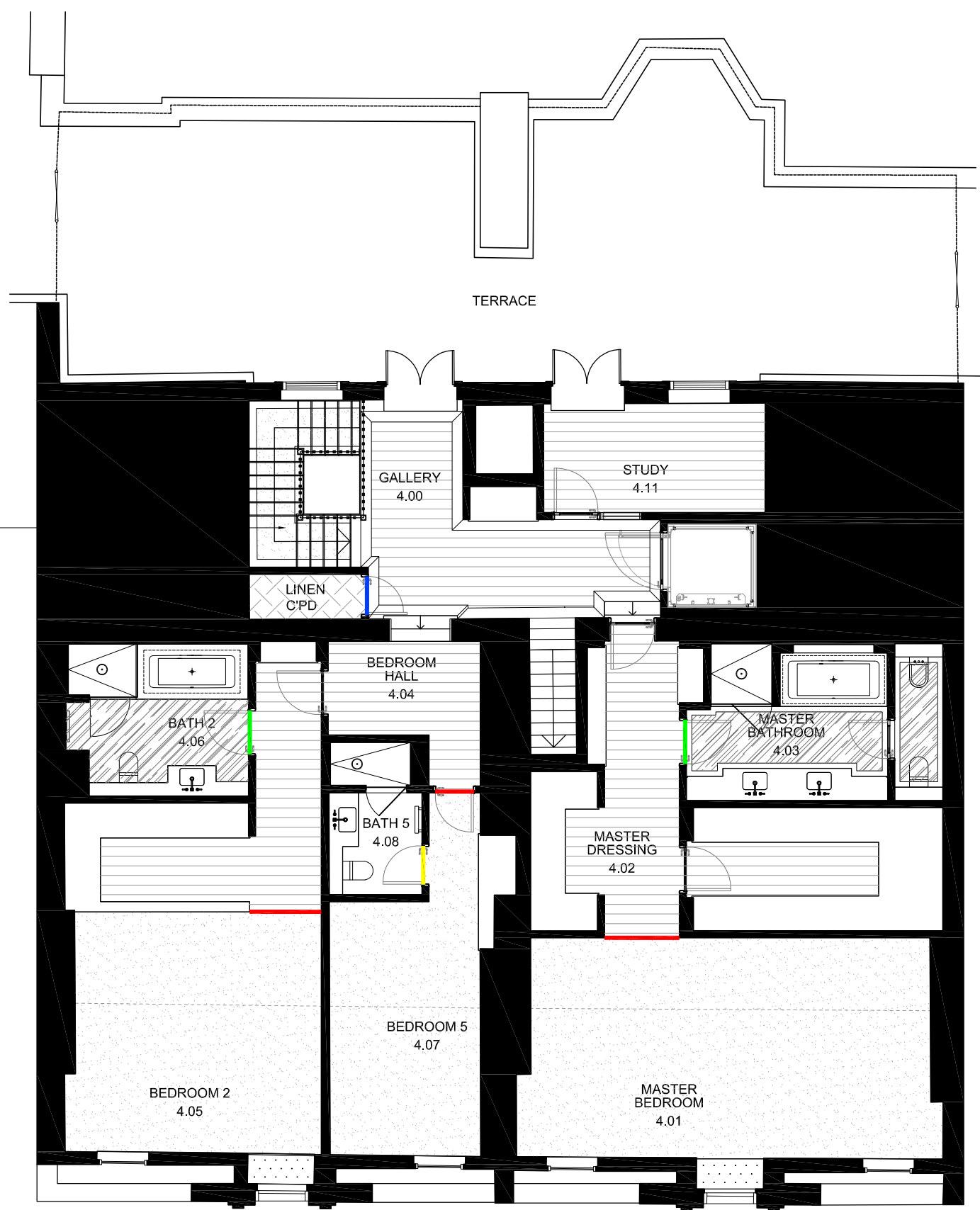
Checked By
SP

Purpose Of Issue	Revision
Planning	

Global Headquarters
Candy & Candy Limited
23 Hanover Square
London W1S 1JB
Tel: +44 (0)20 7590 1900
Fax: +44 (0)20 7590 1901
Web: www.candyandcandy.com
E-mail: info@candyandcandy.com



All Property, Drawings & Documents - C&C Projects - 0207 7590 1901 - Cambridge Gate - 0508 Planning - Resubmission/Planning Version 15 - 050515.dwg



METAL FLOOR THRESHOLDS

- TH-01 Stone/Timber
- TH-02 Timber/Carpet
- TH-03 Carpet/Stone, Tile
- TH-04 Timber/Vinyl

- TILE - Ceramic Tile
- SS - Stone Slab
- ST - Stone Tile
- Floor Paint
- CPT - Fitted Carpet
- INS - Inset Carpet
- RUG - Rug Carpet
- TI - Timber
- VINYL - Vinyl

Disclaimer
 These drawings, images, plans, photos and/or computer generated images have been prepared in good faith but should not be relied on as a statement of fact and no representation, warranty or undertaking, express or implied, is made by Candy & Candy Limited or its associates, directors, officers, employees or agents as to any of the contents of these drawings, images, plans, photos and/or computer generated images, and neither Candy & Candy Limited nor any of its associates, directors, officers, employees or agents accepts any liability for any reliance upon them, whether under the Property Misdescriptions Act 1991 or otherwise. They are not intended to constitute part of an offer or contract or to create any contractual relationship. The details contained herein, including any quantities, calculations, areas, measurements or distances given, are approximate and indicative only and not to scale. The contents of this document cannot be guaranteed to represent complete information/decisions of a scheme. The details may be subject to variations or change without notice. Any reference to alterations to or use of any part of the project is not a statement that any necessary planning, building regulations or other consent has been obtained. These matters must be verified by any buyer/lessee. Any buyer/lessee must satisfy himself by inspection or otherwise as to the correctness of any information given. The copyright, together with all other intellectual property rights, in these drawings, images, plans, photos and/or computer generated images belongs to Candy and Candy Limited or its third party licensor and may not be copied, altered, published, transmitted, sold, distributed or in any way used or exploited either in whole or in part.

Notes

Rev	Date	Name	Revision Notes

Project Title
 7 CAMBRIDGE GATE

Drawing Description
 Floor Finishes Plan
 Fourth Floor

Drawing Number
 PL411

Scale
 A3

Date Drawn
 31/10/14

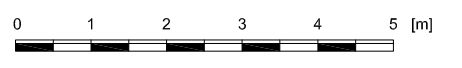
Drawn By
 CW

Checked By
 SP

Purpose Of Issue	Revision
Planning	

Global Headquarters
 Candy & Candy Limited
 23 Hanover Square
 London W1S 1JB
 Tel: +44 (0)20 7590 1900
 Fax: +44 (0)20 7590 1901
 Web: www.candyandcandy.com
 E-mail: info@candyandcandy.com

411 - Fourth Floor Finishes Plan
 1:100



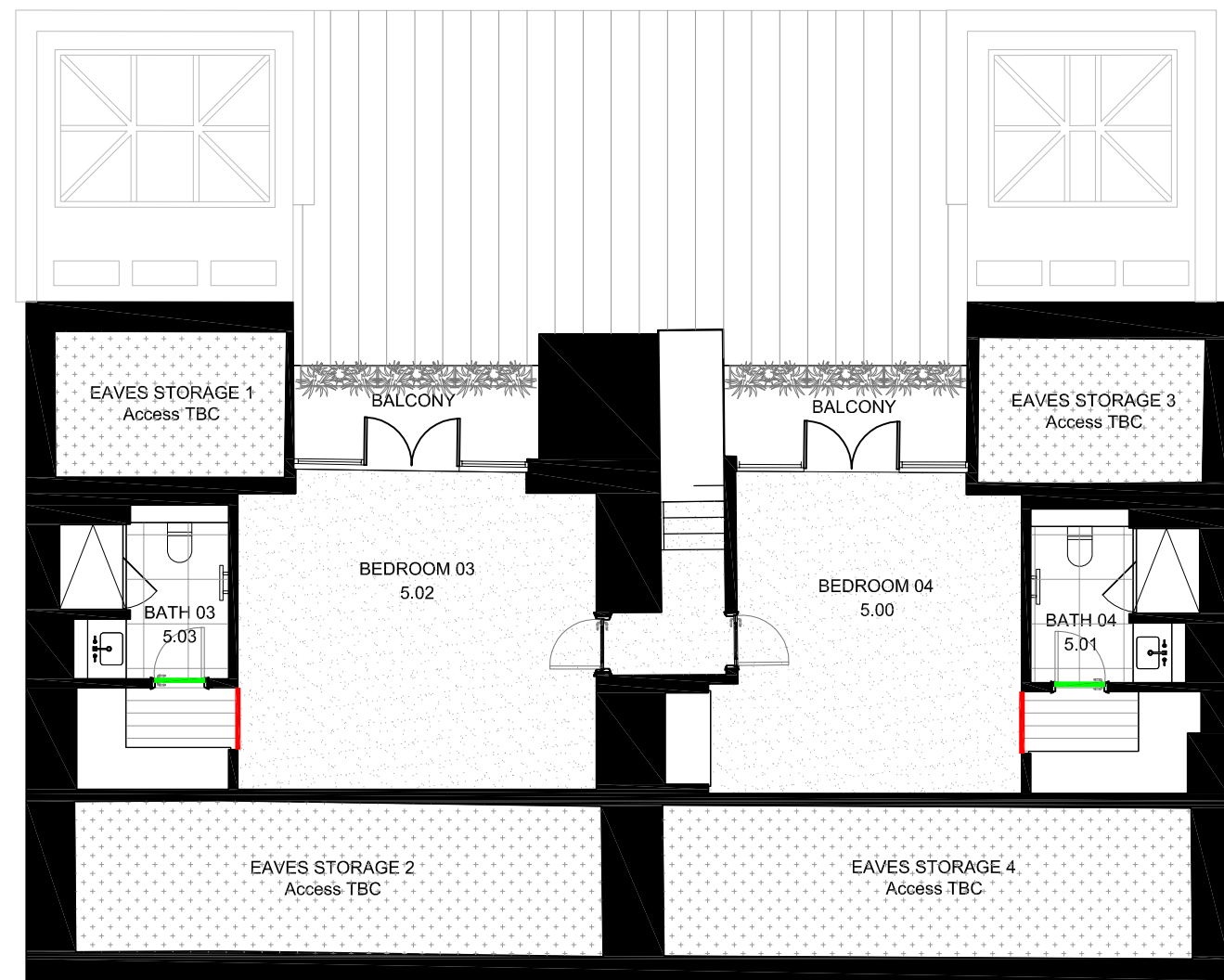
All Property, Drawings & Documents - C&C Projects 100777 - Cambridge Gate - 0908 Planning Resubmission Proposed Drawings 14. 0909.14

At Property Direction & Design/0000 - C&C Projects/0027 - Cambridge Gate/01 Planning/Resubmission/Planning Version 15 - 050514.dwg

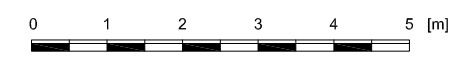
METAL FLOOR THRESHOLDS

- TH-01 Stone/Timber
- TH-02 Timber/Carpet
- TH-03 Carpet/Stone, Tile
- TH-04 Timber/Vinyl

- TILE - Ceramic Tile
- SS - Stone Slab
- ST - Stone Tile
- Floor Paint
- CPT - Fitted Carpet
- INS - Inset Carpet
- RUG - Rug Carpet
- TI - Timber
- VINYL - Vinyl



- Fifth Floor Finishes Plan
511 1:100



Disclaimer
 These drawings, images, plans, photos and/or computer generated images have been prepared in good faith but should not be relied upon as a statement of fact and no representation, warranty or undertaking, express or implied, is made by Candy & Candy Limited or its associates, directors, officers, employees or agents as to any of the contents of these drawings, images, plans, photos and/or computer generated images, and neither Candy & Candy Limited nor any of its associates, directors, officers, employees or agents accepts any liability for any reliance upon them, whether under the Property Misdescriptions Act 1991 or otherwise. They are not intended to constitute part of an offer or contract or to create any contractual relationship. The details contained herein, including any quantities, calculations, areas, measurements or distances given, are approximate and indicative only and not to scale. The contents of this document cannot be guaranteed to represent complete information of a scheme. The details may be subject to variations or change without notice. Any reference to alterations to or use of any part of the project is not a statement that any necessary planning, building regulations or other consent has been obtained. These matters must be verified by any buyer/lessee. Any buyer/lessee must satisfy himself by inspection or otherwise as to the correctness of any information given. The copyright, together with all other intellectual property rights, in these drawings, images, plans, photos and/or computer generated images belongs to Candy and Candy Limited or its third party licensor and may not be copied, altered, published, transmitted, sold, distributed or in any way used or exploited either in whole or in part.

Notes

Rev	Date	Name	Revision Notes

Rev	Date	Name	Revision Notes

Project Title
7 CAMBRIDGE GATE

Drawing Description
Finishes Plan
Fifth Floor

Drawing Number
PL511

Scale
A3

Date Drawn
31/10/14

Drawn By
CW

Checked By
SP

Purpose Of Issue	Revision
Planning	

Global Headquarters
 Candy & Candy Limited
 23 Hanover Square
 London W1S 1JB
 Tel: +44 (0)20 7590 1900
 Fax: +44 (0)20 7590 1901
 Web: www.candyandcandy.com
 E-mail: info@candyandcandy.com

