



**05 - DEMOLITION PLAN**  
 STREET ELEVATION

NW63HP@Camden16042015

RCB

DRAWN :

A2

SHEET :

24/05/15

DATED :



DEMOLITION AND REMOVAL

1/50

SCALE :

NW63HP

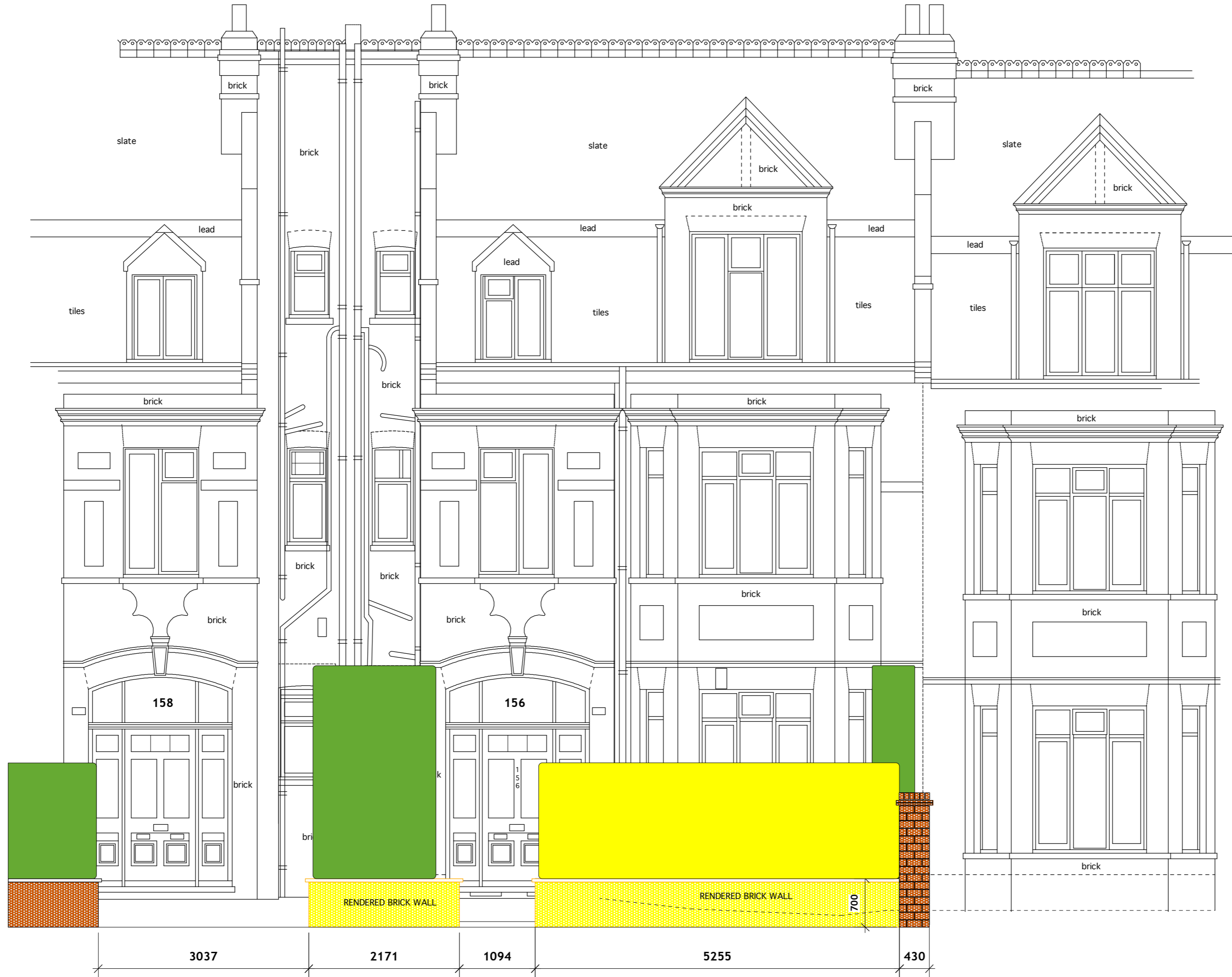
PROJ No.

00

REV. No.

PROJECT

**156 GOLDHURST TERRACE**  
**LONDON NW6 3HP**



A.O.D. 37.00m