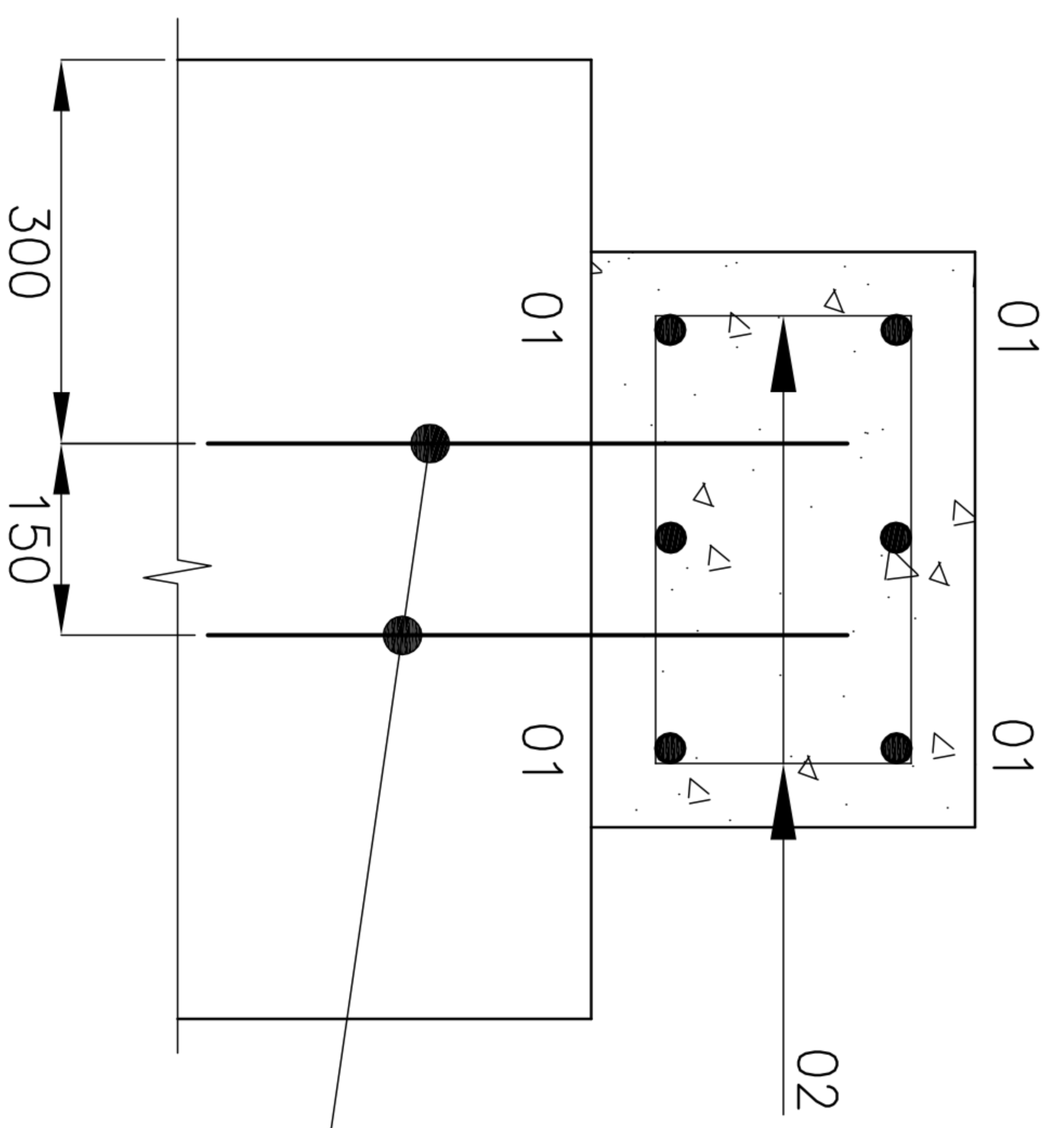


ELEVATION OF 300X400 RC GROUND BEAM (1:10)



SECTION 1 - 1 (1:10)

- NOTES:-
1. Setting out to be done from Architect's drawings
 2. Engineer's drawings to be read in conjunction with specification and all Architect's drawings and specifications
 3. Insulation to Architect's Specification.
 4. Do not scale from Engineer's drawings
 5. All steel to Grade S275
 6. Cover to reinforcement to be 50mm UNO
 7. Reinforcement shown on this drawing is listed on Schedule Sheet No 14/0192/40/01

Rev	Date	Drawn	Eng	Approved	Construction
-	06/05/15	AL	ML		

LAWSON MARTIN LONG
Consulting Engineers
28 Nottingham Road
London, SE9 4QW
Tel: 020 8 857 7071 Mob: 07830 195 682
E-mail: mlong@lmce.com

M PHILLIPS
FLAT 2 LADYWELL COURT
LONDON NW3
RC DETAILS OF 300X400
GROUND BEAM

Scales at A1 1:10 at A3
Drawing No. 14/00192/40 Rev.