

KXC: Building P1 Discharge of Conditions 2c and 2d Playground

Contents Sheet

04/06/2015

Condition 2 (c)

Condition 2 (c) Details of playground screens enclosing the southern and western boundaries.

Please find enclosed information to illustrate materials proposed to be installed on the south western edge of Plot P1, to the south and west of the school playground, at ground level.

Each material is referenced on the attached David Morley Architects drawings, which are listed here, along with the relevant material sample photos and specifications, listed below:

Number	Name
476 12-005 A	School Fence – Elevations and Cross Section
476 12-006 A	School Fence – Setting Out
476 12-010 A	School Fence – Typical Details
476 12-011 A	School Play Fence Louvre Panels
476 12-013 A	Main Entrance Gate General Arrangement (and Elevations)

Specifications:

Expended Metal Company – pattern is 'New York' Anodised aluminium mesh. Gauge of metal is 3mm.

Photos:

- Photo 01 – Playscreen Mesh 1
- Photo 02 – Playscreen Mesh 2

Photo 01

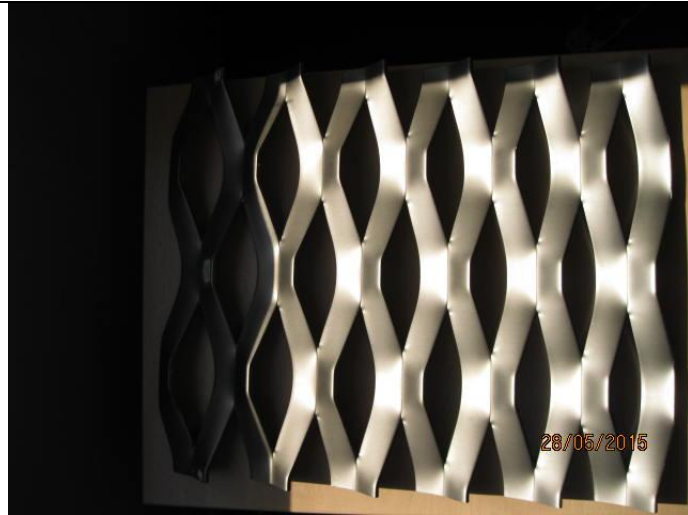
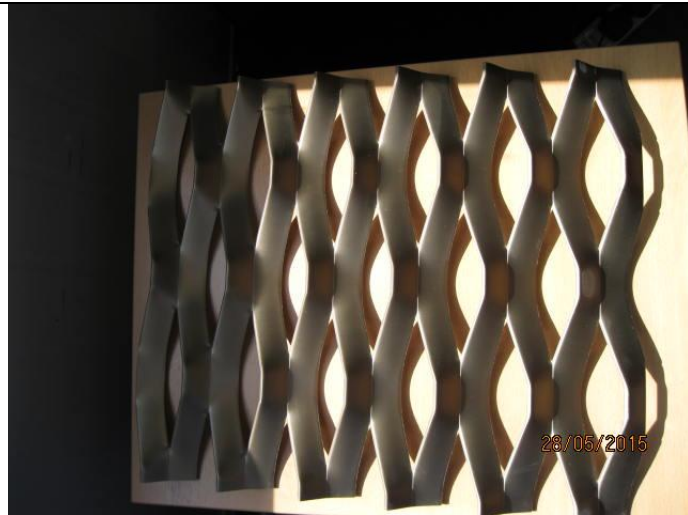


Photo 02



Condition 2 (d)

Condition 2 (d) Details, including layout, specification and finishes, or the school playground.

Please find enclosed information to illustrate the layout, specification and finishes of the school playground.

This includes two drawings by David Morley Architects, as listed here:

Drawing Number	Name
540 12-100 G	External Playground – Level 0
540 12-101	External Playground – Level 1

Specifications:

Silver Green colour Decking for Playdeck from UPM ProFi Deck; Technical Specification submitted with this application.

Resin Bound Gravel (Permeable Surfacing) from Addagrip; specification submitted with this application.

Photos:

- Photo 01 - Silver Green colour Decking (open rib)
- Photo 02 - Silver Green colour Decking (section showing open and closed rib)
- Photo 03 – Resin Bound Gravel
- Photo 04 – External Barrier Matting

Photo 01



Photo 02



Photo 03



Photo 04



END.