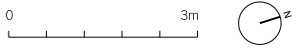
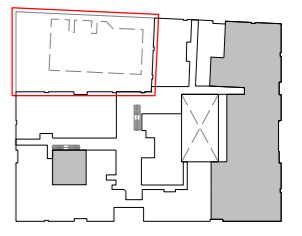


Notes
 © David Morley Architects
 Do not scale off drawing.
 Check all dimensions on site and advise any discrepancies before commencing work.
 All dimensions in millimetres unless otherwise noted.
 Refer to 540-00-000 for general graphic key information.



Key Plan

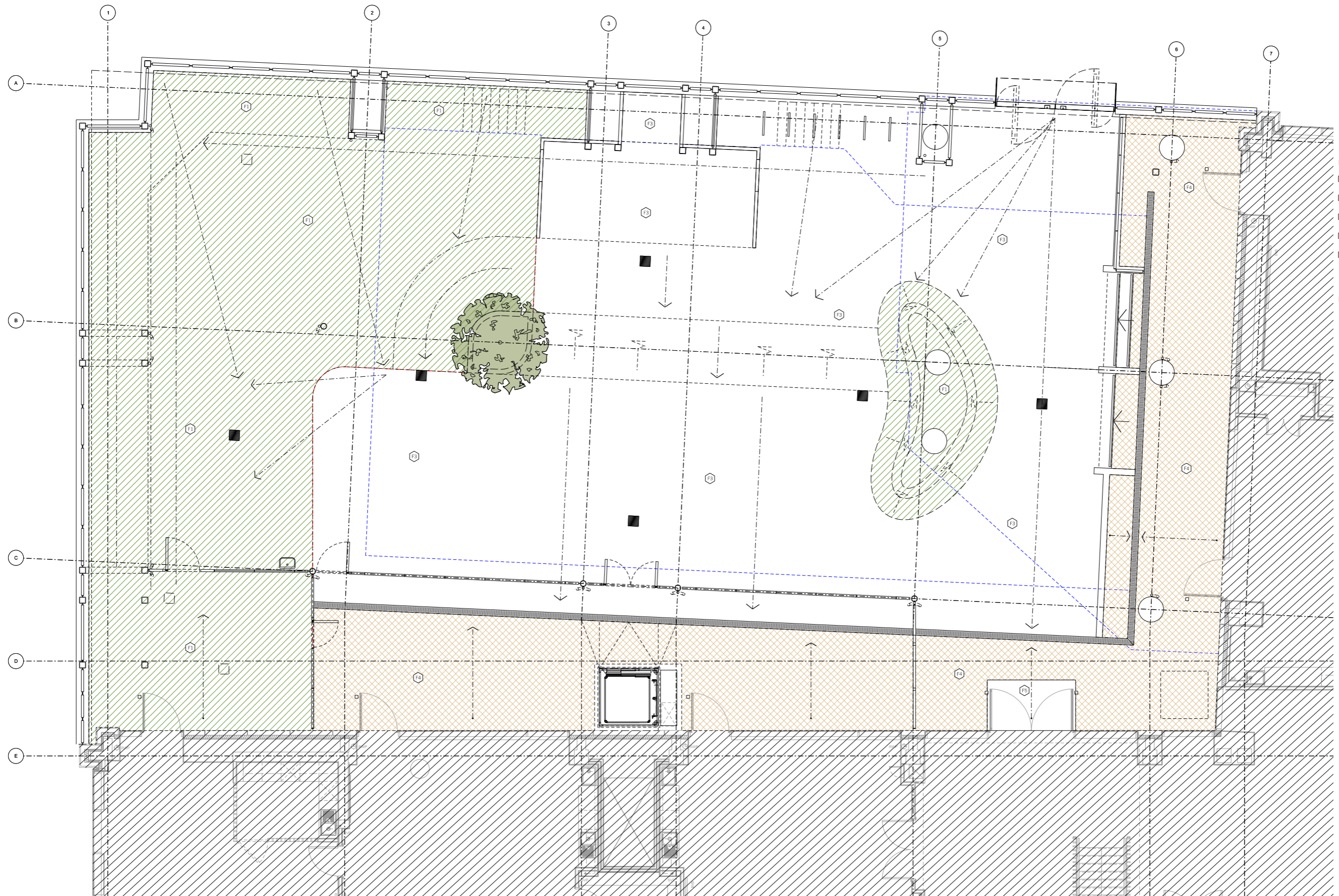


Key - Finishes

- F1 Q22/140 Wet Pour EPDM Surface
Colour: Maygreen
- F2 Q22/140 Wet Pour EPDM Surface
Colour: Fireblend
- F3 Q22/141 Permeable Resin Bound Surface
Colour: Chocolate Buff
- F4 Q22/142 Resin Bound Surface
Colour: Chocolate Buff
- F5 N10/302 External Barrier Matting

Key

- + [26.155m] Spot Level
- ☐ Rainwater outlet access cover
Covers to be filled with surface finish
- Door Posts
- Surface Fall Indicator
- Transition Strip - Detail 4, 540-12-001



1 Level 0
 GENERAL ARRANGEMENT PLAN

Rev.	Description
G	Final Contract Issue

DAVID MORLEY ARCHITECTS
 18 Hatton Place London EC1N 8RU
 Tel: 020 7430 2444 Fax: 020 7430 2443
 davidmorleyarchitects.co.uk

Client
 Cavillion Construction Limited

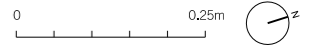
Project
 King's Cross New Schools

Drawing
 External Playground - Level 0

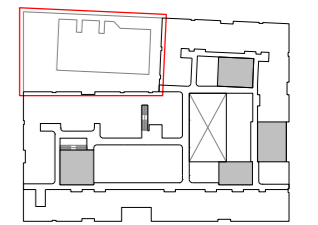
Job No.	Drawing No.	Revision
540	12-100	G

Date of First Issue	Scale @ A1	Revision Date
17/03/2015	1:50	26/05/2015

Notes
 © David Morley Architects
 Do not scale off drawing
 Check all dimensions on site and advise any discrepancies before commencing work.
 All dimensions in millimetres unless otherwise noted.
 Refer to S40-00-000 for general graphic key information.



Key Plan

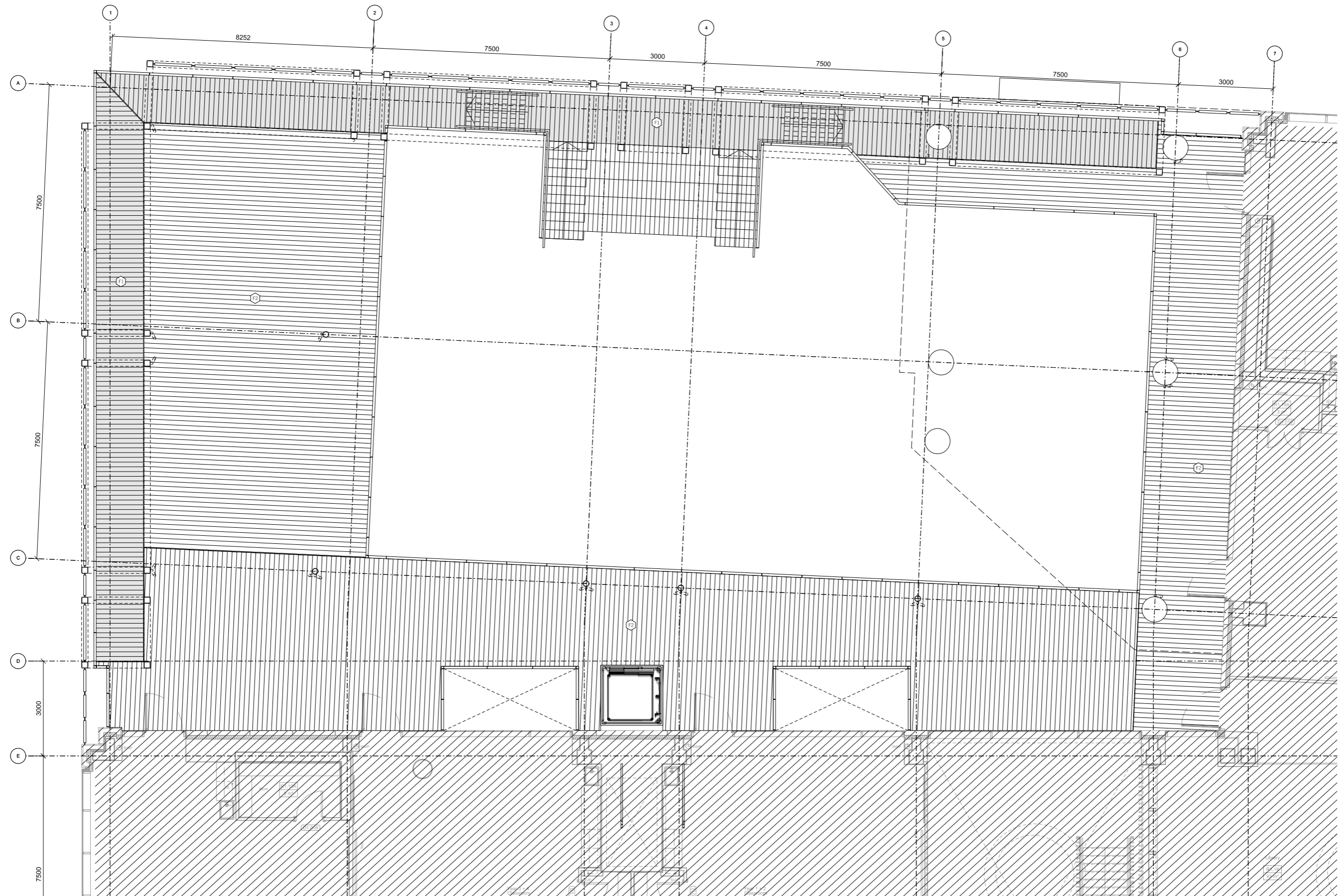


Key - Finishes

- F1 UPM 'Proff' Deck - Profile A (open rib)
Colour: Silver Green
- F2 UPM 'Proff' Deck - Profile B (close rib)
Colour: Silver Green

Key

- + 28.155m Spot Level
- Rainwater outlet access cover
Covers to be filled with surface finish
- Door Posts
- Surface Fall Indicator
- Transition Strip - Detail 4, S40-12-001



1 Level 1
 GENERAL ARRANGEMENT PLAN

Rev.	Description
<p>DAVID MORLEY ARCHITECTS 18 Hutton Place London EC1N 8RU Tel: 020 7430 2444 Fax: 020 7430 2443 davidmorleyarchitects.co.uk</p>	
<p>Client Carillion Construction Limited</p>	
<p>Project King's Cross New Schools</p>	
<p>Drawing External Playground - Level 1</p>	
Job No. 540	Drawing No. 12-101
Date of First Issue 01/06/2015	Revision First Issue
Scale @ A1 1:60	Revision Date -