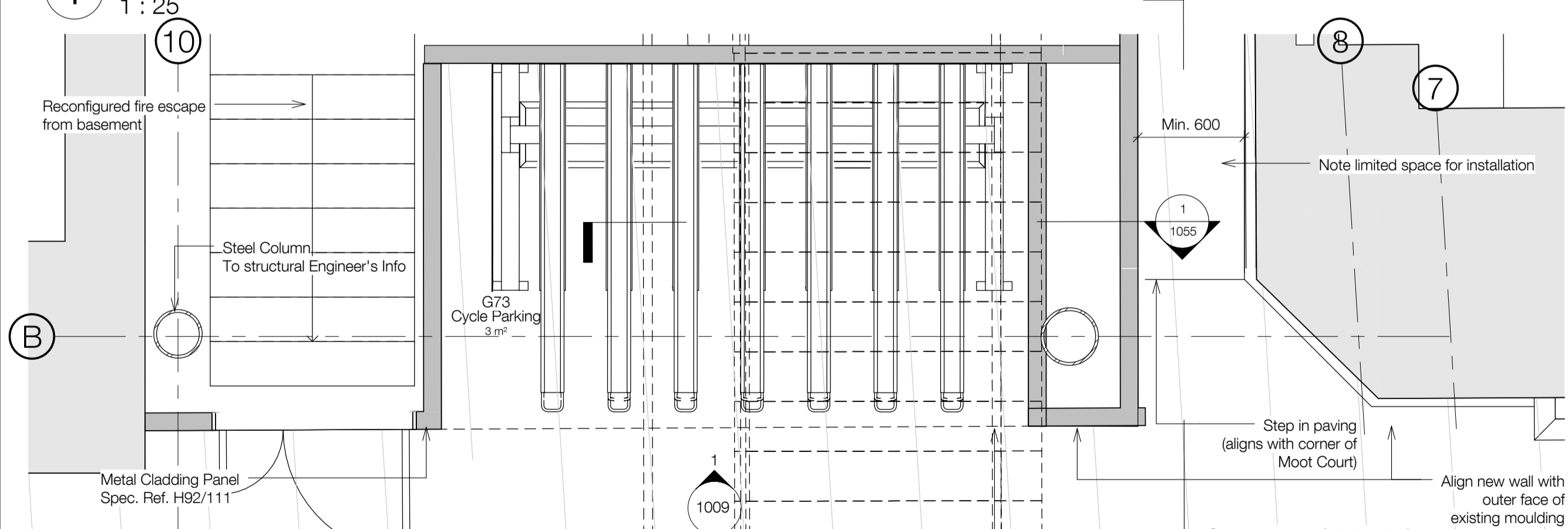
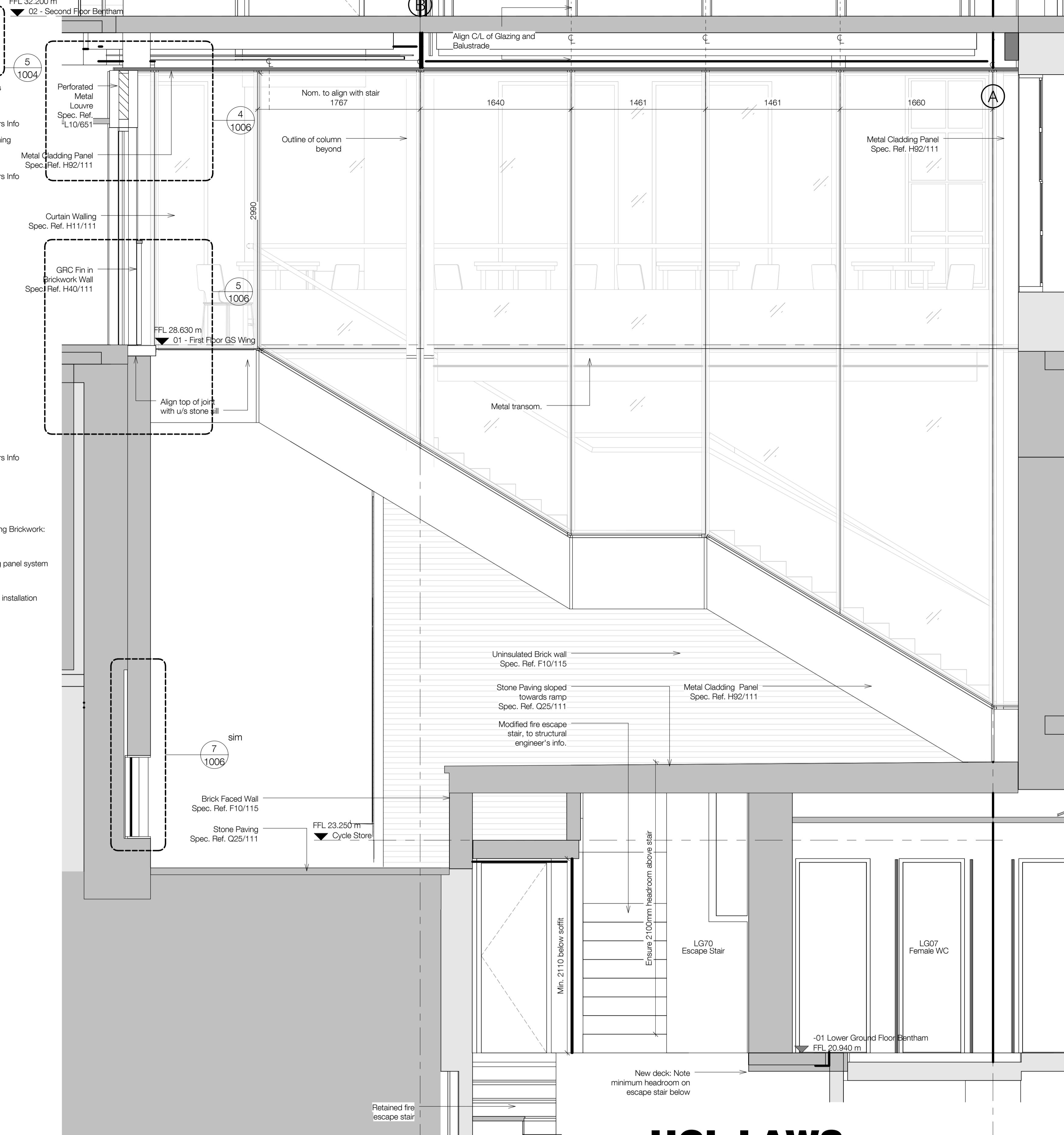


1 Cycle store and stair - Elevation from ramp



2 Cycle store and stair - Ground Floor plan



3 Cycle store and stair - Elevation from Moot Court

standard notes

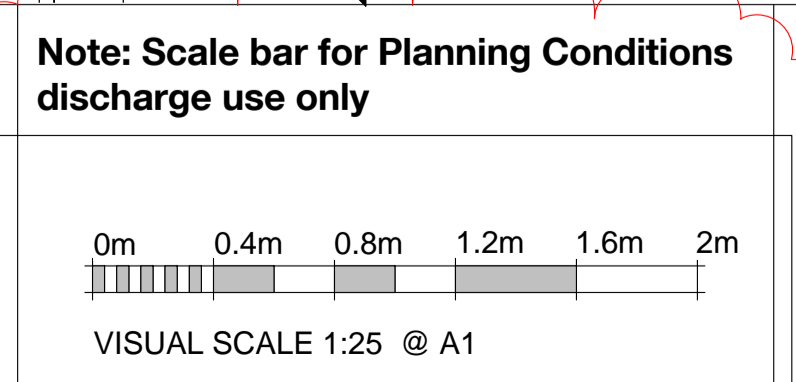
1. Do not scale this drawing.
2. All dimensions must be checked on site and any discrepancies verified with the architect.
3. Unless shown otherwise, all dimensions are to structural surfaces.

THIS IS NOT A CONSTRUCTION DRAWING, IT IS UNSUITABLE FOR THE PURPOSE OF CONSTRUCTION AND MUST ON NO ACCOUNT BE USED AS SUCH.

drawing notes

DESIGN INTENT: These are design intent drawings and do not show full construction information. The Contractor must develop the details, without changing the visual, spatial or other performances, to provide a fully developed scheme including all concealed components such as wind posts, vapour barriers and cavity barriers. All dimensions on this drawing are taken to finished surfaces unless specifically indicated on the dimensions itself.

KEY: Existing building (assumed)
 Proposed building



revisions

P1	22.10.14	First issue
P2	14.11.14	Issued for information
P3	27.02.15	Issued for Pre-Tender Estimate
T1	25.03.15	Issued for Tender
P4	31.03.15	Planning Conditions Issue

P5 18.05.15 Planning Conditions Re-issue

UCL LAWS Bentham House

date 06.08.14
client UCL
scale As indicated
drawing Cycle store and stair
drawn AF **checked** TG **drawing number** 3000 - A - 1009 **rev** P5

Levitt Bernstein
 1 Kingsland Passage
 London E8 2BB
 t: 020 7275 7676
 f: 020 7275 9348
 w: levittbernstein.co.uk
 e: post@levittbernstein.co.uk
Levitt Bernstein

C:\Revit Local\Project Path\3000_UCL LAWS CENTRAL_jonathan.mann.rvt