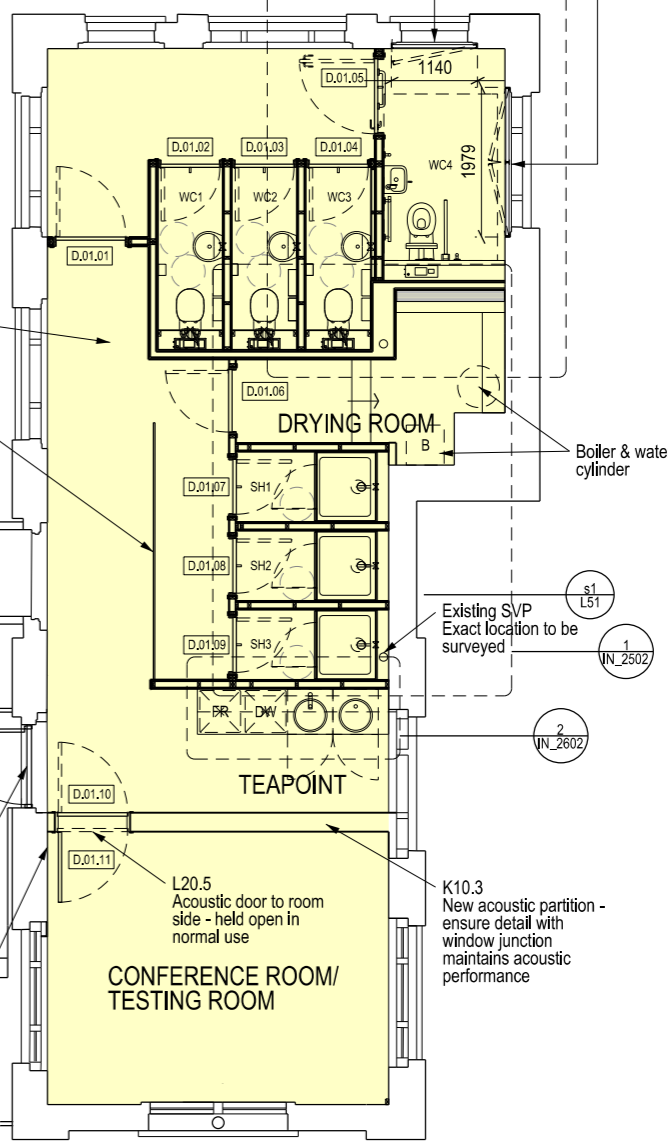


**KEY**

- D.02.06 Door number - refer to Schedule of Works for door schedule
- (A) Z10.3a and Z10.3b Long Desk Type - refer to drawing IN2701
- (B) Z10.3a and Z10.3b Short Desk Type - refer to drawing IN2703
- (C) Column aluminium service containment 'halo' - refer to drawing IN2210
- (D) Z10.4 Storage unit - refer to drawing IN2711

M50.4 White translucent insulated polycarbonate panel within aluminium frame set within existing window opening. Hinged on one side, with discreet locking mechanism to provide access to window. Site measure.



Rev	Date	Revision	Checked by	Drawn by
C1	15.10.14	Issued to reflect client agreed layout	LM	LM
C2	10.03.15	Amend plan amended	TW	KR
T1	07.05.15	Issued for Tender	KG	KR

DATE	15.10.14
STATUS	TENDER
SCALE	@A1 1:50 @A3 1:100
DRAWN	LM
CHECKED	JW

PROJECT TITLE  
**MAX FORDHAM'S OFFICE REFURBISHMENT PHASE 2**

DRAWING TITLE  
**PROPOSED FIRST FLOOR PLAN**

DRAWING NUMBER  
**MFP\_L04**

REVISION  
**T1**

**CULLINAN STUDIO**  
 5 BALDWIN TERRACE LONDON N1 7RU TEL: 020 7704 1975  
 EMAIL: [mfp@cullinanstudio.com](mailto:mfp@cullinanstudio.com)

© EDWARD CULLINAN ARCHITECTS LTD 2012