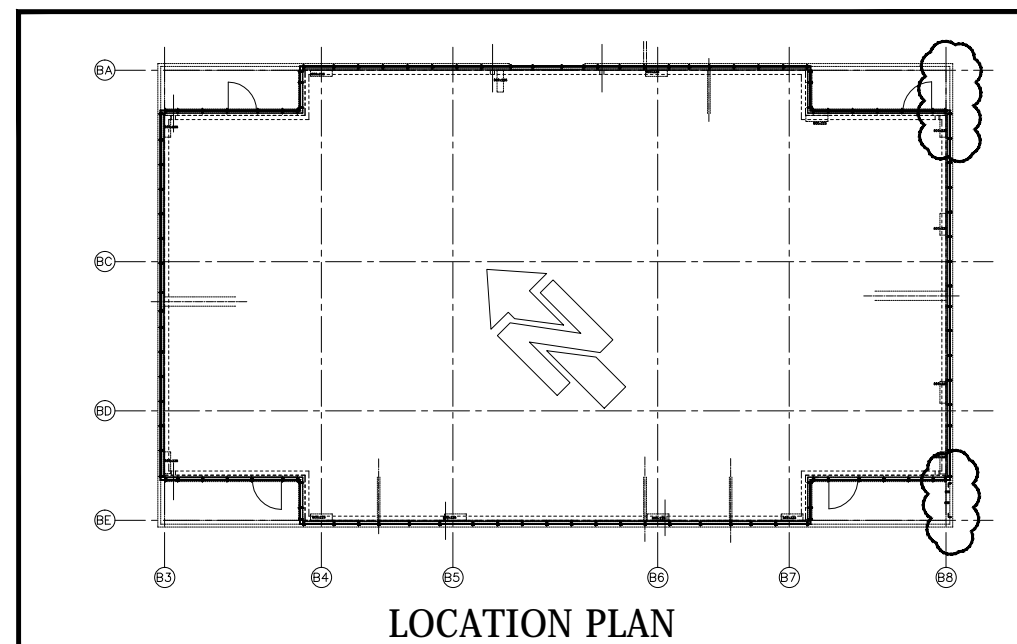


**PLAN DETAIL ON SOUTH BALCONY FIXED SCREEN
EAST BALCONY IS MIRROR OPPOSITE**



- Notes:
- All orthographic projections are in third angle
 - Stainless steel fixings cannot be painted due to lack of adhesion.
 - All set screws to be hex head c/w nyloc nuts U.N.O.
 - Anodised components from different sources/alloys may exhibit colour variation.
 - PPC finish to be 40 microns U.N.O.
 - Penetrations in building envelope to be weathered by others.
 - All architectural pointing by others
 - Tolerance is $\pm 1\text{mm}$ U.N.O.
 - Maximum tolerance of other trades:
Brick/Block & Steel $\pm 10\text{mm}$
Concrete $\pm 15\text{mm}$

This drawing and copyright belongs to Maple Sunscreening Ltd. Do not copy, reproduce or supply any information without prior written permission.

A	NK	Up-issue to comments & site survey
	14.05.15	Construction Issue
R:	Init/Date:	Revision:

maple
sunscreening

Progress House, Newby Road Ind. Estate, Hazel Grove, Stockport, Cheshire, SK7 5DA
Tel: 0161 456 6644
www.maplesunscreening.co.uk

Project Title:
St. Edmunds Terrace

Client:
Galliford Try

Site Address:
**Guinness Court
St. Edmunds Terrace
London
NW8 7QE**

Finish:
PPC to RAL 7022

Drawing Title:
**Fixed Screen Timber Louvre Screen
South Balcony
Plan Detail**

Drawn:	Checked:	Date:
NK	NL	05.05.2015

Scale:	Paper Size:
DO NOT SCALE	A3 LANDSCAPE

Status:
For Construction

Job No:	Drawing No:	Rev:
3245	FS-B-PL-001	A

NOTE:
- FOR SECTION & ELEVATION DETAIL SEE DRAWING N° 3245-FS-B-SE-001