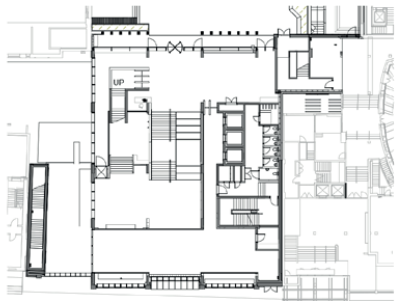


- 1 Light grey reconstituted stone structural and non structural elements
- 2 Buff facing brickwork with lime mortar
- 3 Structural glazing curtain wall/ window system, clear double glazing
- 4 Bronze anodised aluminium rainscreen cladding
- 5 Light bronze anodised aluminium rainscreen cladding/ plant screen
- 6 Photovoltaic arrays on waterproof roof membrane
- 7 Natural silver anodised aluminium rainscreen cladding



- NSC- Roof
47950
- NSC - 4th floor
44800
- NSC - 3rd floor
40900
- NSC - 2nd Floor
37000
- NSC - 1st floor
33100
- Gordon Street
25300



← 26 Gordon Square → ← New Student Centre → ← Bloomsbury Theatre →

GORDON STREET ELEVATION LOOKING WEST

Rev. Date Description
00 08/06/15 First issue: planning application

Nicholas Hare Architects
3 Barnsbury Square London N1 1JL
telephone +44 (0)20 7619 1670
fax +44 (0)20 7619 1671
e-mail 689ux2@nicholas-hare.co.uk

status For planning
To be read in conjunction with all relevant information - do not scale

project UCL New Student Centre
for University College London
site East Elevation - AS PROPOSED

scale 1:100 size A1 drawing number 689-NHA-PL-111 rev 00

