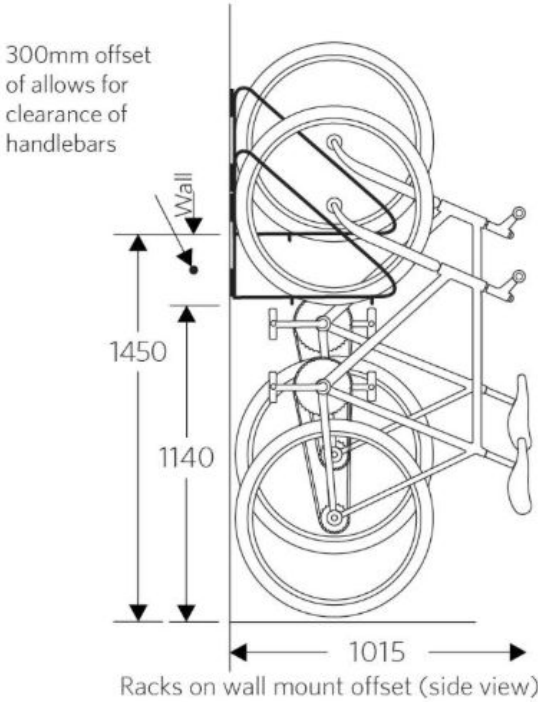


Private housing = 59no. x 2 bikes per rack = **118no. cycles**
Affordable housing = 12no. x 2 bikes per rack = **24no. cycles**
Non-residential = 18no. x 2 bikes per rack = **36no. cycles**
= 178no. cycles



Private housing = 10no. racks
= 10no. cycles

CYCLE RACK TYPE 02

Core C

10 No vertical Storage (Type 2)
20 No Double storage system (Type 1)

Total Bicycles = 50

Core A

39 No Double storage system (Type 1)
Total Bicycles = 78

Office

18 No Double storage system (Type 1)
Total Bicycles = 36

RSL

12 No Double storage system (Type 1)
Total Bicycles = 24

Mews houses

14no Type 3 Cycle storage (2 spaces per house)

Total Bicycles = 14

Grand Total
202 spaces

1
100

CYCLE RACK TYPE 01
'Josta' two tier cycle rack or similar.
Diagram not to scale. Sspacing and ceiling heights provided as per manufacturer's recommendations.

1
100

PROPOSED NON-RESIDENTIAL BIKE STORE
'Josta' wall hung cycle rack or similar
Diagram not to scale. Sspacing and ceiling heights provided as per manufacturer's recommendations.

Type description and dimenions

This drawing is prepared for the purposes of a planning application and to show design intent only. The information contained herein must not be used for costing, construction, engineering or any other purposes without agreement in writing from Waugh Thistleton Architects Ltd.

NOTES

REV	NOTES	DATE	CHK
1	Issued for Stage D	20.05.15	DW

Waugh Thistleton Architects Ltd
74 Paul Street
London EC2A 4NA
U.K.

T: +44 (0)20 7613 5727
F: +44 (0)20 7613 5749

email/web
waughthistleton.com

architects **Waugh Thistleton**

STATUS	
PRELIMINARY	
Job	Grays Inn Road Regal Homes
Title	Cycle Storage Types
Date	May 2015
Scale	As scale bar
Drawn	

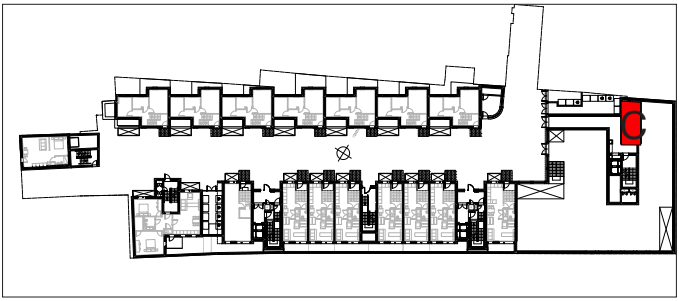


Basement Floor Level

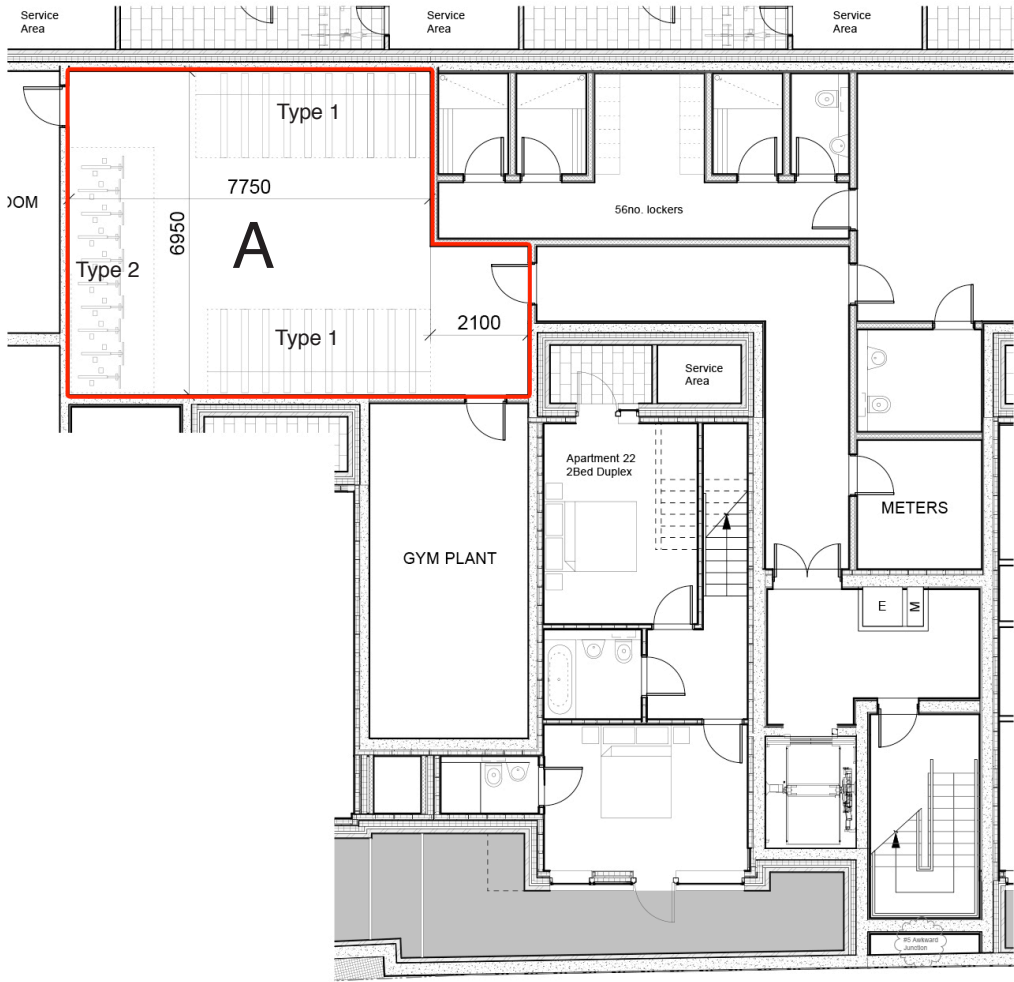
Storage Spec

Type 1 - 2-tier High Capacity Rack
Pre-galvanised and mild steel rack as Josta 2-tier High Capacity Rack Or similar

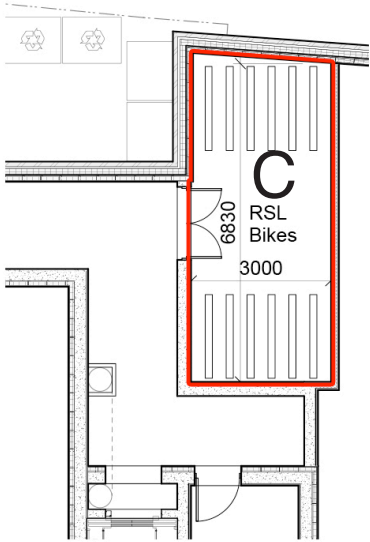
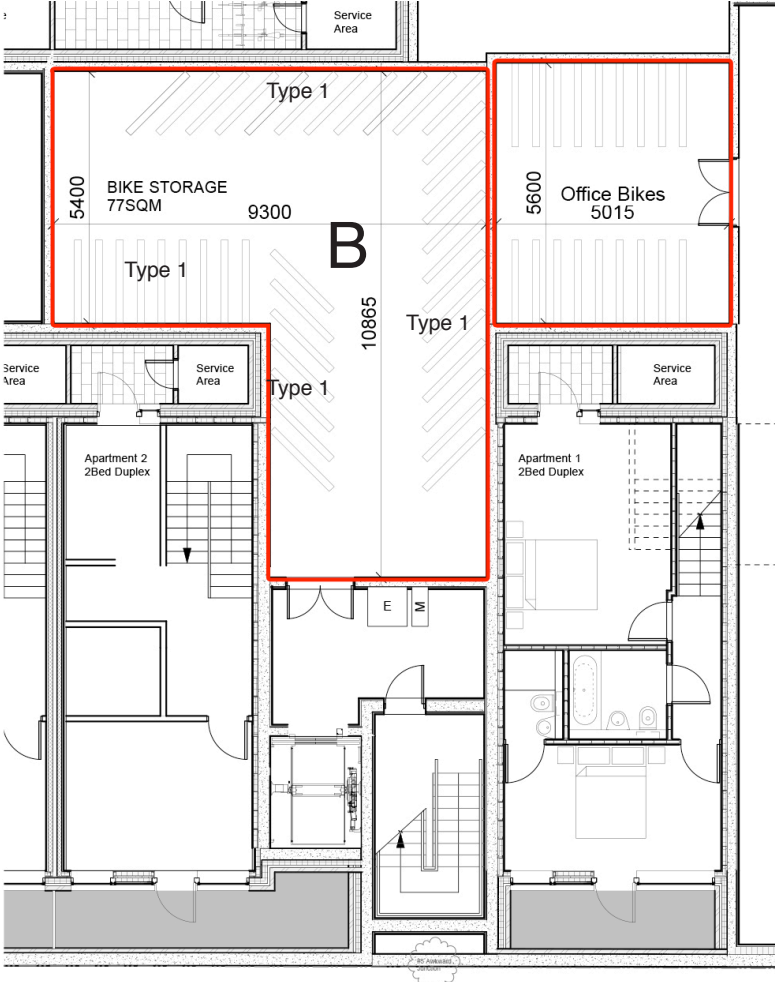
Type 2- Vertical Hanging rack system
Pre-galvanised and mild steel rack as Josta Wall Hook (Vertical)



Ground Floor Level



Plans Layouts Basement



Plans Layouts Ground floor

Core C - Bike Storage

Core C

- 10 No vertical Storage (Type 2)
- 20 No Double storage system (Type 1)

Total Bicycles = 50

Core A and Office - Bike Storage

Core A

- 39 No Double storage system (Type 1)
- Total Bicycles = 78

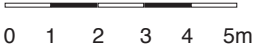
Office

- 18 No Double storage system (Type 1)
- Total Bicycles = 36

RSL - Bike Storage

RSL

- 12 No Double storage system (Type 1)
- Total Bicycles = 24



This drawing is prepared for the purposes of a planning application and to show design intent only. The information contained herein must not be used for costing, construction, engineering or any other purposes without agreement in writing from Waugh Thistleton Architects Ltd.

REV 1 NOTES Issued for Stage D

DATE 20.05.15

CHK DW

Waugh Thistleton Architects Ltd
74 Paul Street
London EC2A 4NA
U.K.

T: +44 (0)20 7613 5727
F: +44 (0)20 7613 5749

email/web
waughthistleton.com

architects **Waugh Thistleton**

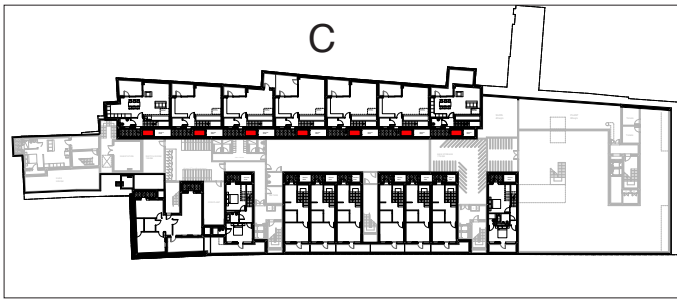
STATUS

PRELIMINARY

Job Grays Inn Road Regal Homes
Title Cycle Storage Layouts

Date May 2015
Scale As scale bar
Drawn

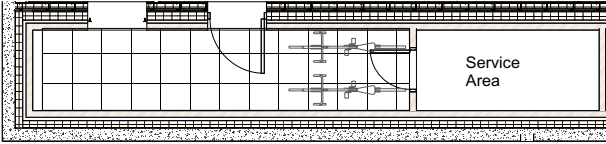
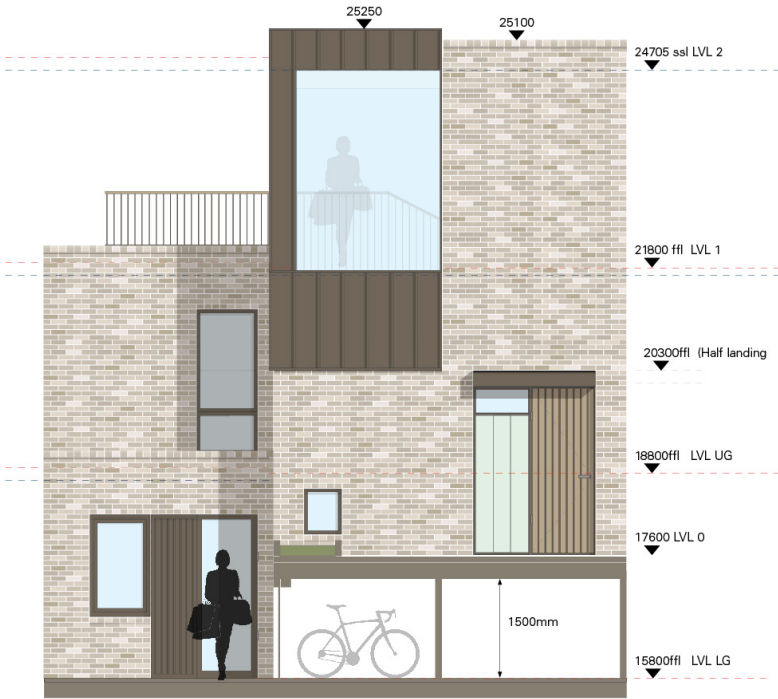
16
1_529-A-00-87-101.



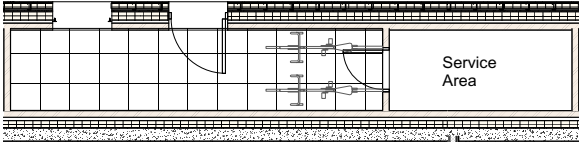
Lower ground Floor Level

Storage Spec

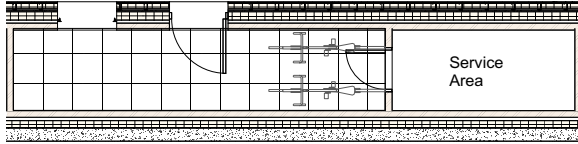
Type 3 - Secure Spaces for 2 bicycles located at lower ground floor level.



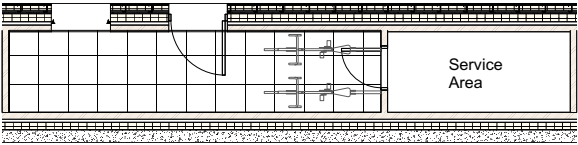
1
100
RESIDENTIAL BIKE STORAGE AREA - STORAGE TYPE 3
Lower Ground, Townhouse no. 1.



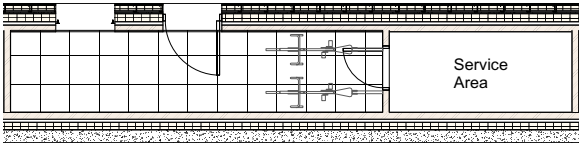
1
100
RESIDENTIAL BIKE STORAGE AREA - STORAGE TYPE 3
Lower Ground, Townhouse no. 2.



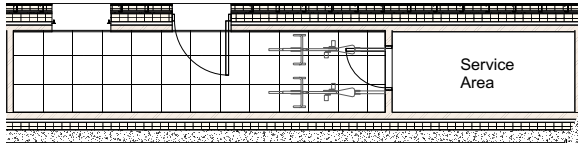
1
100
RESIDENTIAL BIKE STORAGE AREA - STORAGE TYPE 3
Lower Ground, Townhouse no. 3.



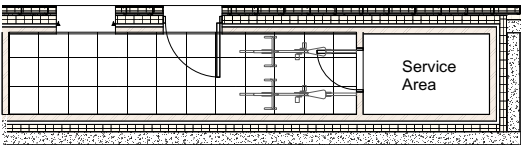
1
100
RESIDENTIAL BIKE STORAGE AREA - STORAGE TYPE 3
Lower Ground, Townhouse no. 4.



1
100
RESIDENTIAL BIKE STORAGE AREA - STORAGE TYPE 3
Lower Ground, Townhouse no. 5.



1
100
RESIDENTIAL BIKE STORAGE AREA - STORAGE TYPE 3
Lower Ground, Townhouse no. 6.



1
100
RESIDENTIAL BIKE STORAGE AREA - STORAGE TYPE 3
Lower Ground, Townhouse no. 7.

Plans Layouts Lower Ground Floor

Mews houses

14no Type 3 Cycle storage (2 spaces per house)

Total Bicycles = 14



This drawing is prepared for the purposes of a planning application and to show design intent only. The information contained herein must not be used for costing, construction, engineering or any other purposes without agreement in writing from Waugh Thistleton Architects Ltd.

NOTES

REV 1
NOTES Issued for Stage D

DATE 20.05.15

CHK DW

Waugh Thistleton Architects Ltd
74 Paul Street
London EC2A 4NA
U.K.

T: +44 (0)20 7613 5727
F: +44 (0)20 7613 5749

email/web
waughthistleton.com

architects **Waugh Thistleton**

STATUS

PRELIMINARY

Job Grays Inn Road Regal Homes
Title Cycle Storage Layouts - Mews Housing

Date May 2015
Scale As scale bar
Drawn