

Rolfe Judd

Architecture Planning Interiors

Old Church Court, Claylands Road, The Oval, London SW8 1NZ

T 020 7556 1500

www.rolfe-judd.co.uk

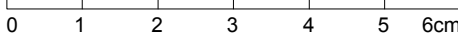
NOTES

Copyright Rolfe Judd Ltd

- 1 The Contractor must check and confirm all dimensions
- 2 All discrepancies must be reported and resolved by the Architect before works commence
- 3 This drawing is not to be scaled
- 4 All work and materials to be in accordance with current applicable Statutory Legislation and to comply with all relevant Codes of Practice and British Standards

Scale

This scale is 6cm in length when printed at the size shown in the title



North Point

Rev continued

Date

Revision

Date

Client

Shaftesbury Covent Garden Ltd

Project

Thomas Neals Centre
London W1

Drawing

Proposed General Arrangement Plan

Scale

1:200 (A3)

Date

May 15

Status

Job Number

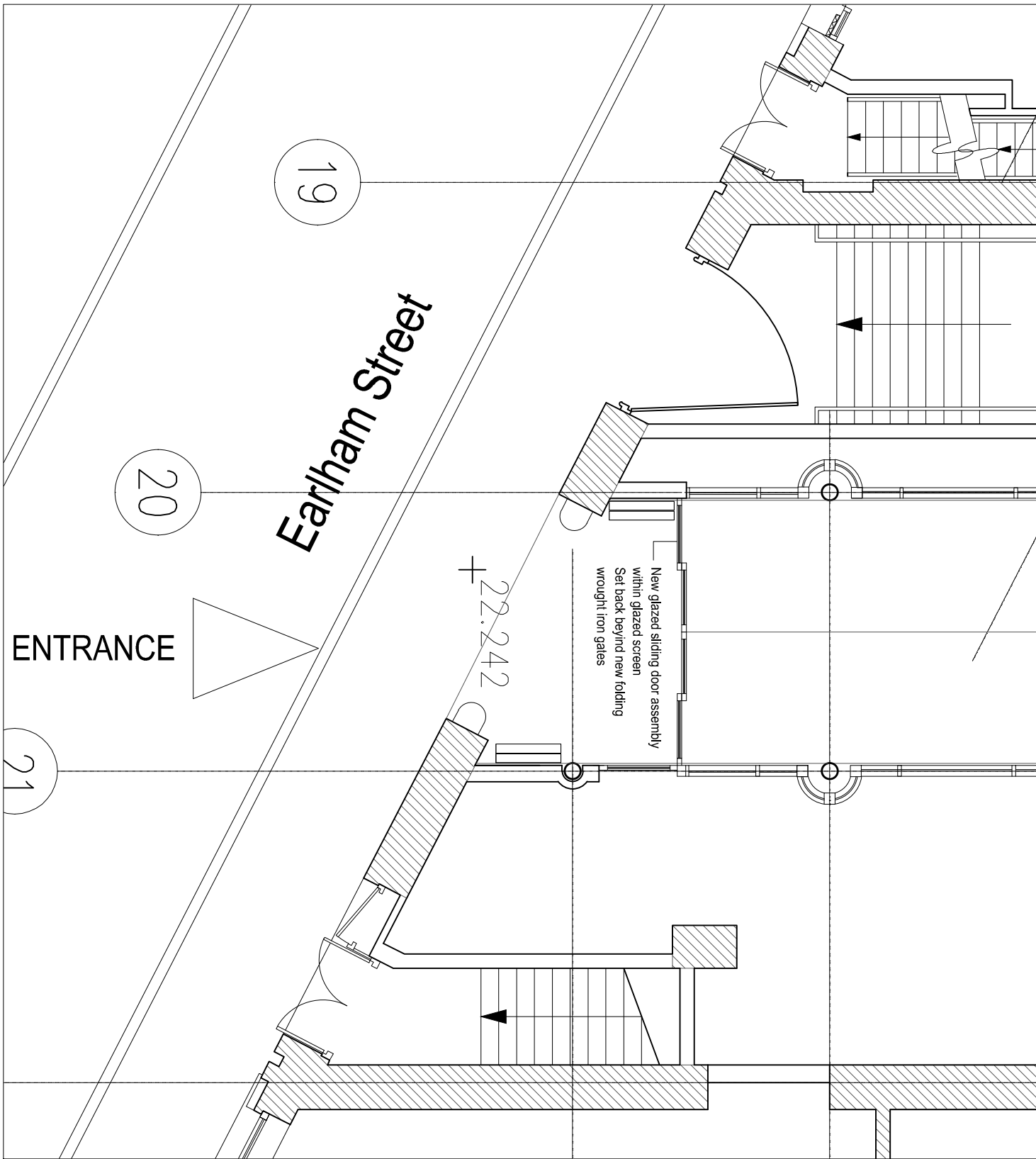
5644

Drawing Number

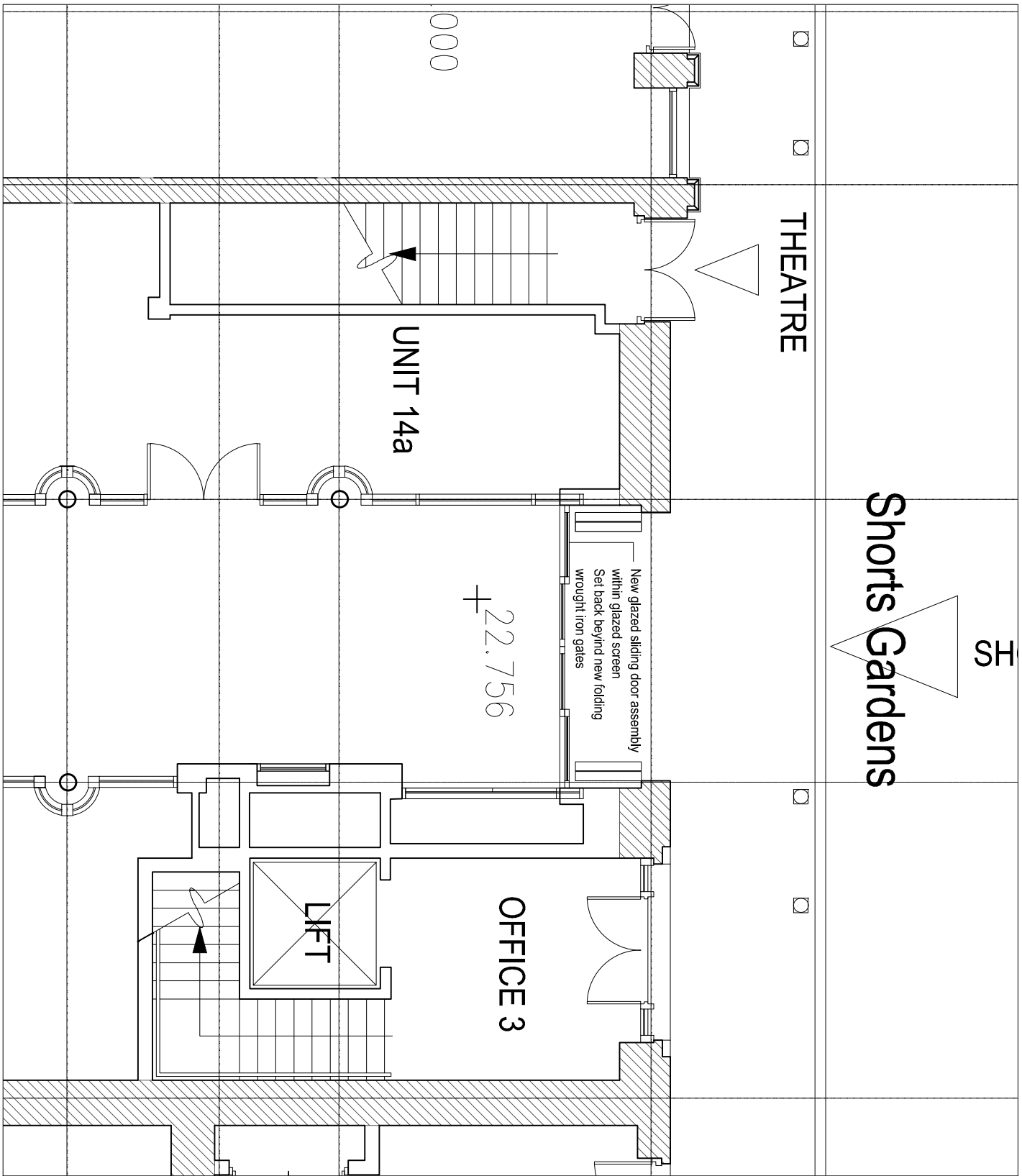
T(20) P00

Revision

G:\5644\T_Series\May 2015 Planning application\T(20) Series\T(20)P00



Proposed Detail Plan
Earlham Street Entrance



Proposed Detail Plan
Shorts Gardens Entrance

Rolfe Judd

Architecture Planning Interiors

Old Church Court, Claylands Road, The Oval, London SW8 1NZ

T 020 7556 1500

www.rolfe-judd.co.uk

- NOTES
- Copyright Rolfe Judd Ltd
- 1 The Contractor must check and confirm all dimensions
 - 2 All discrepancies must be reported and resolved by the Architect before works commence
 - 3 This drawing is not to be scaled
 - 4 All work and materials to be in accordance with current applicable Statutory Legislation and to comply with all relevant Codes of Practice and British Standards

Scale

This scale is 6cm in length when printed at the size shown in the title

0 1 2 3 4 5 6cm

North Point

Rev continued

Date

Revision

Date

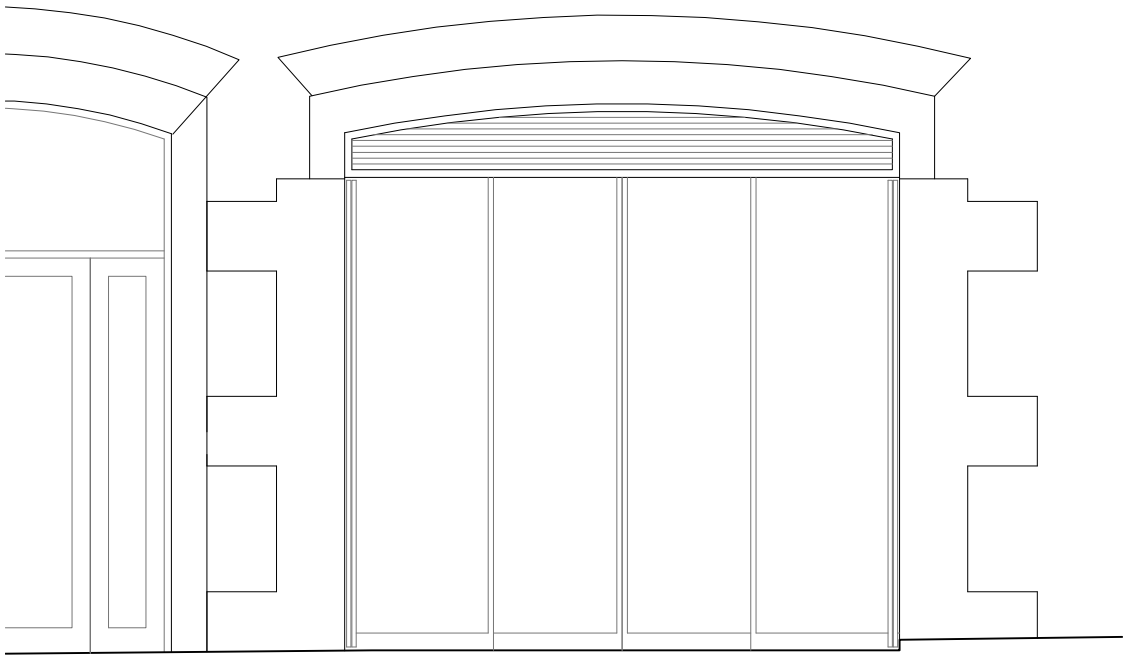
Client
Shaftesbury Covent Garden Ltd

Project
Thomas Neals Centre
London W1

Drawing
Proposed Detail Plan

Scale 1:75 (A3) Date May 15 Status
Job Number 5644 Drawing Number T(20) DP00 Revision

G:\5644\T_Series\May 2015 Planning application\T(20) Series\T(20)DP00



External Gates - Open condition

Note:
Original opening remains unaffected
Existing non original external gates replaced with new simple wrought ir
New glazed sliding doors added.

Detailed elevation
External gates open
Scale 1:50



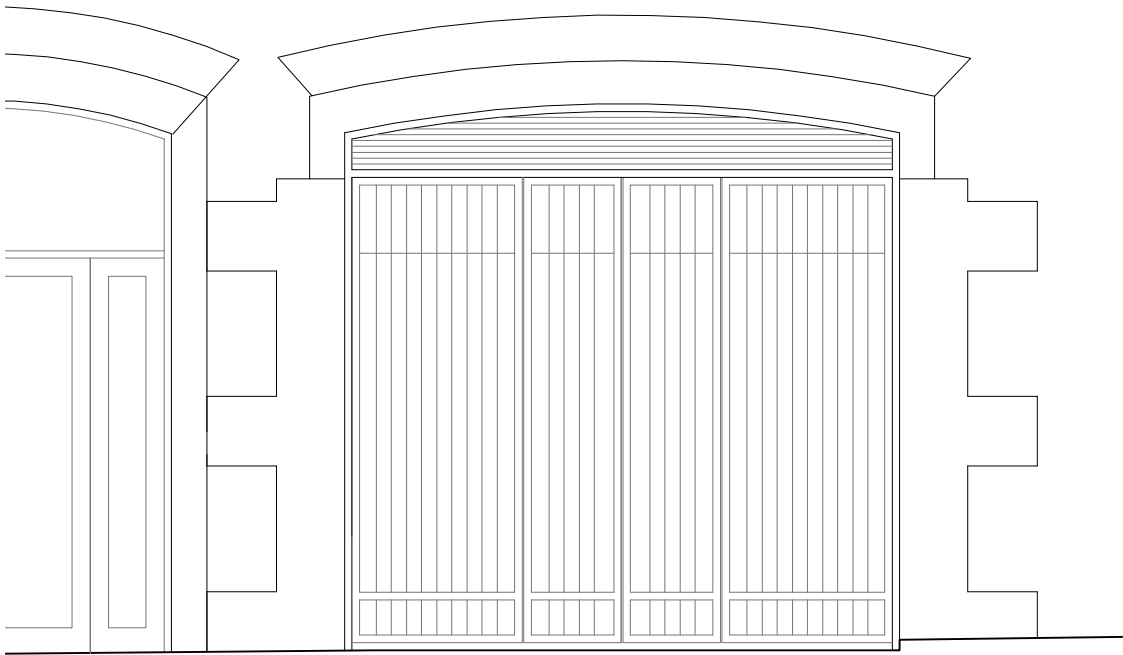
External Gates - Open condition
Note:
Original opening remains unaffected
Existing non original external gates replaced with new simple wrought iron
New glazed sliding doors added.

Proposed Shorts Gardens Elevation

Rolfe Judd

Architecture Planning Interiors
Old Church Court, Claylands Road, The Oval, London SW8 1NZ
T 020 7556 1500
www.rolfe-judd.co.uk

| | | | | | | | |
|---|--|---------------|------|----------|------|---|---|
| NOTES Copyright Rolfe Judd Ltd 1 The Contractor must check and confirm all dimensions 2 All discrepancies must be reported and resolved by the Architect before works commence 3 This drawing is not to be scaled 4 All work and materials to be in accordance with current applicable Statutory Legislation and to comply with all relevant Codes of Practice and British Standards | Scale This scale is 6cm in length when printed at the size shown in the title 0 1 2 3 4 5 6cm North Point | Rev continued | Date | Revision | Date | Client Shaftesbury Covent Garden Ltd | Drawing Proposed Shorts Gardens Elevation External Gates Open |
| | | | | | | | |
| | | | | | | | |
| | | | | | | | |
| | | | | | | Project Thomas Neals Centre London W1 | Scale 1:200 & 50 Job Number 5644 |
| | | | | | | | |
| | | | | | | | |
| | | | | | | | |
| | | | | | | | Date May 15 Drawing Number T(20) E00 |
| | | | | | | | |
| | | | | | | | |
| | | | | | | | |
| | | | | | | | Status Revision |
| | | | | | | | |
| | | | | | | | |
| | | | | | | | |



External Gates - Closed condition

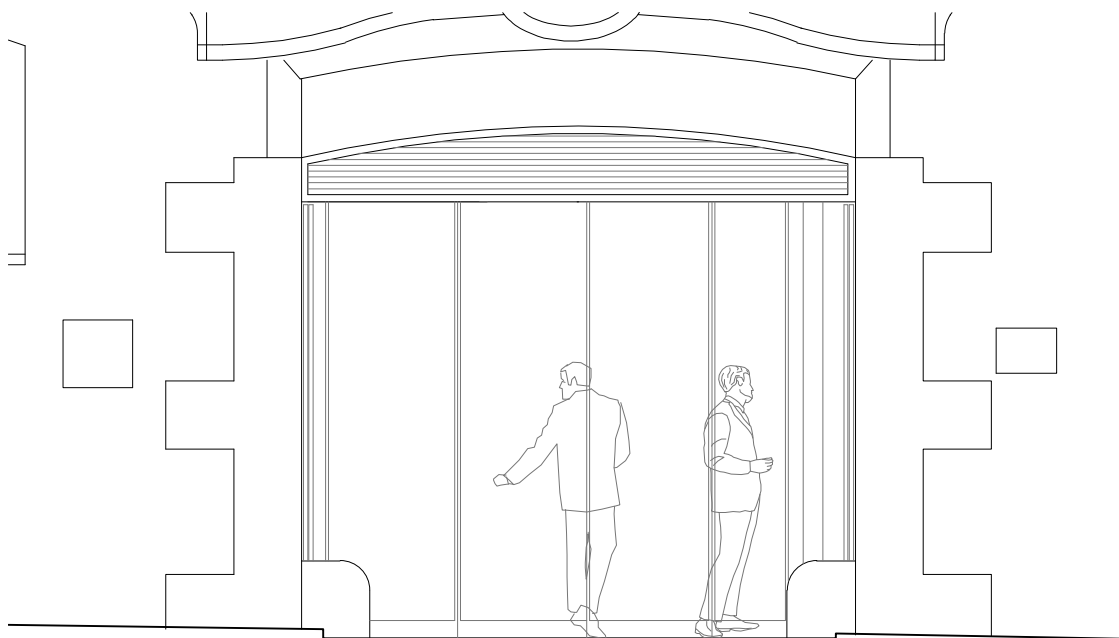
Note:
Original opening remains unaffected
Existing non original external gates replaced with new simple wrought ir
New glazed sliding doors added.

Detailed elevation
External gates closed
Scale 1:50



Rolfe Judd
Architecture Planning Interiors
Old Church Court, Claylands Road, The Oval, London SW8 1NZ
T 020 7556 1500
www.rolfe-judd.co.uk

| | | | | | | | | | | | |
|--|-------------------------------------|---|--------------------------|-----------------|---------------------|-----------------|--|--|---|--|---------------------|
| <div>NOTES</div> <div>1 The Contractor must check and confirm all dimensions</div> <div>2 All discrepancies must be reported and resolved by the Architect before works commence</div> <div>3 This drawing is not to be scaled</div> <div>4 All work and materials to be in accordance with current applicable Statutory Legislation and to comply with all relevant Codes of Practice and British Standards</div> | <div>Copyright Rolfe Judd Ltd</div> | <div>Scale</div> <div>This scale is 6cm in length when printed at the size shown in the title</div> <div><div><div>0</div><div>1</div><div>2</div><div>3</div><div>4</div><div>5</div><div>6cm</div></div></div> <div>North Point</div> | <div>Rev continued</div> | <div>Date</div> | <div>Revision</div> | <div>Date</div> | <div>Client</div> <div>Shaftesbury Covent Garden Ltd</div> | <div>Drawing</div> <div>Proposed Shorts Gardens Elevation</div> <div>External Gates Closed</div> | | | |
| | | | | | | | | <div>Project</div> <div>Thomas Neals Centre</div> <div>London W1</div> | <div>Scale</div> <div>1:200 & 50</div> | <div>Date</div> <div>May 15</div> | <div>Status</div> |
| | | | | | | | | | <div>Job Number</div> <div>5644</div> | <div>Drawing Number</div> <div>T(20) E01</div> | <div>Revision</div> |
| | | | | | | | | | <div>G:\5644\T_Series\May 2015 Planning application\T(20) Series\T(20)E01</div> | | |



External Gates - Open condition

Note:

Original opening remains unaffected

Existing non original external gates replaced with new simple wrought iron

New glazed sliding doors added.

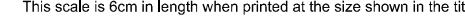


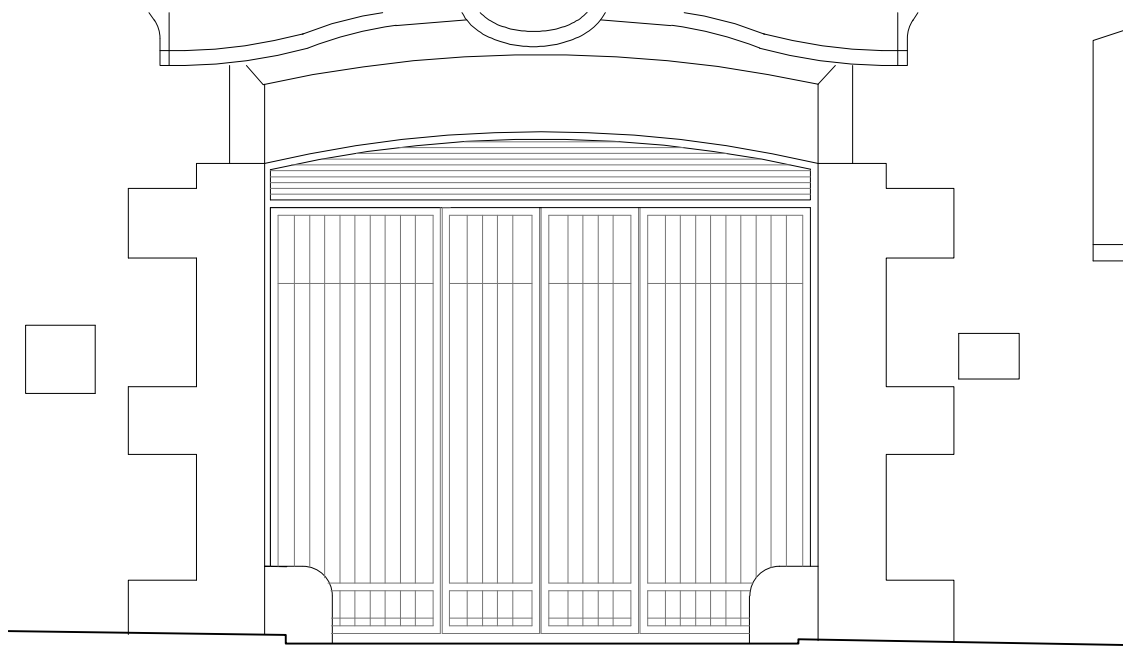
Rolfe Judd
Architecture Planning Interiors

Old Church Court, Claylands Road, The Oval, London SW8 1NZ

020 7556 1500

www.rolfe-judd.co.uk

| | | | | | | | |
|---|--|----------------------|-------------|-----------------|-------------|--|--|
| <p>NOTES</p> <p>Copyright Rolfe Judd Ltd</p> <p>1 The Contractor must check and confirm all dimensions</p> <p>2 All discrepancies must be reported and resolved by the Architect before works commence</p> <p>3 This drawing is not to be scaled</p> <p>4 All work and materials to be in accordance with current applicable Statutory Legislation and to comply with all relevant Codes of Practice and British Standards</p> | <p>Scale</p> <p>This scale is 6cm in length when printed at the size shown in the title</p>  <p>0 1 2 3 4 5 6cm</p> <p>North Point</p> | <p>Rev continued</p> | <p>Date</p> | <p>Revision</p> | <p>Date</p> | <p>Client</p> <p>Shaftesbury Covent Garden Ltd</p> | <p>Drawing</p> <p>Proposed Earlham Street Elevation</p> <p>External Gates Open</p> |
| | | | | | | <p>Project</p> <p>Thomas Neals Centre</p> <p>London W1</p> | <p>Scale</p> <p>1:200 & 50</p> <p>Job Number 5644</p> <p>Drawing Number T(20)</p> <p>Status</p> <p>E02</p> <p>Revision</p> |
| <p>G:\5644\T Series\May 2015 Planning application\T(20) Series\T(20)\E02</p> | | | | | | | |



External Gates - Closed condition

Note:

Original opening remains unaffected

Existing non original external gates replaced with new simple wrought iron

New glazed sliding doors added.



Rolfe Judd

Architecture Planning Interiors

Old Church Court, Claylands Road, The Oval, London SW8 1NZ

T 020 7556 1500

www.rolfe-judd.co.uk

| | | | | | | | | |
|--|--|---|--------------------------|-----------------|---------------------|-----------------|--|---|
| <div>NOTES</div> <div>Copyright Rolfe Judd Ltd</div> <div><div>1</div><div>The Contractor must check and confirm all dimensions</div></div> <div><div>2</div><div>All discrepancies must be reported and resolved by the Architect before works commence</div></div> <div><div>3</div><div>This drawing is not to be scaled</div></div> <div><div>4</div><div>All work and materials to be in accordance with current applicable Statutory Legislation and to comply with all relevant Codes of Practice and British Standards</div></div> | | <div>Scale</div> <div>This scale is 6cm in length when printed at the size shown in the title</div> <div><div><div>0</div><div>1</div><div>2</div><div>3</div><div>4</div><div>5</div><div>6cm</div></div></div> <div>North Point</div> | <div>Rev continued</div> | <div>Date</div> | <div>Revision</div> | <div>Date</div> | <div>Client</div> <div>Shaftesbury Covent Garden Ltd</div> <div><div>Project</div><div>Thomas Neals Centre</div><div>London W1</div></div> | <div>Drawing</div> <div>Proposed Earlham Street Elevation</div> <div>External Gates Closed</div> <div><div><div>Scale</div><div>1:200 & 50</div></div><div><div>Date</div><div>May 15</div></div><div><div>Status</div></div></div> <div><div><div>Job Number</div><div>5644</div></div><div><div>Drawing Number</div><div>T(20)</div></div><div><div>Revision</div><div>E03</div></div></div> <div>G:\5644\IT Series\May 2015 Planning application\T(20) Series\T(20)E03</div> |
|--|--|---|--------------------------|-----------------|---------------------|-----------------|--|---|