

75 Parliament Hill - Planning Clarifications

Mr Kester Scott
Designer: Lewis Bailie

May 2015

Original Planning Application Number: 2014/2774/P
Approved: 5th November 2014

Revision 1: Enlargement of Rooflight windows at front

Currently one rooflight window is shown on the approved drawings but we would like to enlarge it and add another to the front of the property. The before and after photos below show that the proposed rooflights will be barely visible from street level. The larger one will also be mostly hidden behind the large front gable. Also, the attached aerial photo below shows the neighbouring property, no 73 having large rooflights on the front elevation.



Indicative image of proposed rooflight.



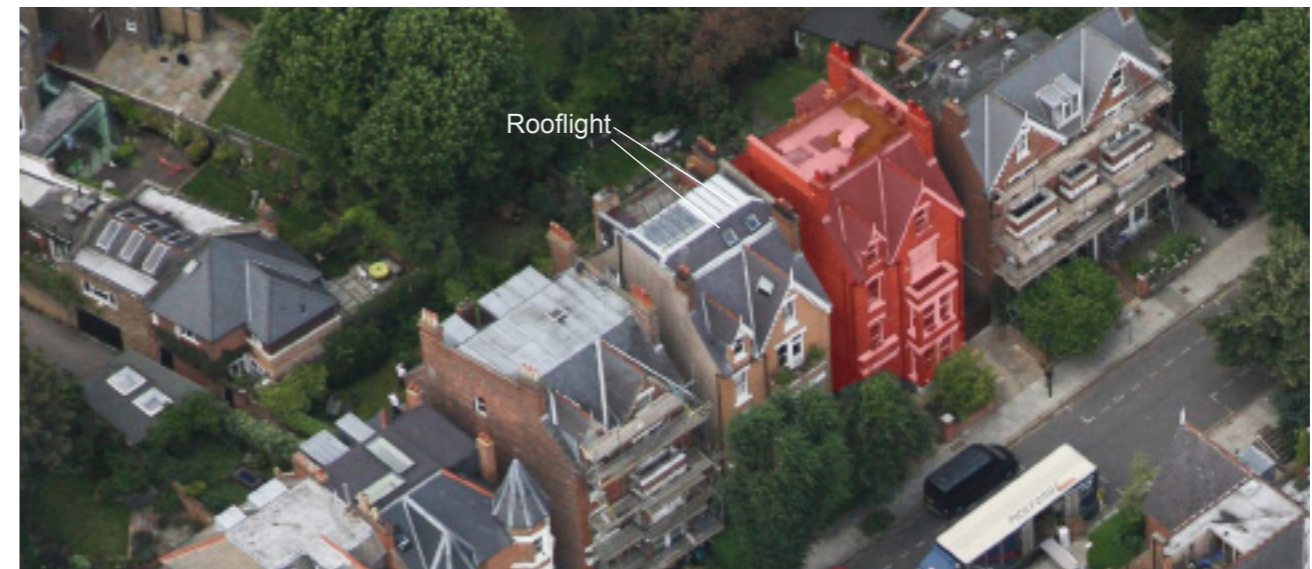
Existing view from street.



Proposed view from street showing enlarged rooflight at front. It would be largely hidden behind the two front gable dormers.



Proposed front elevation showing the new and enlarged rooflights.



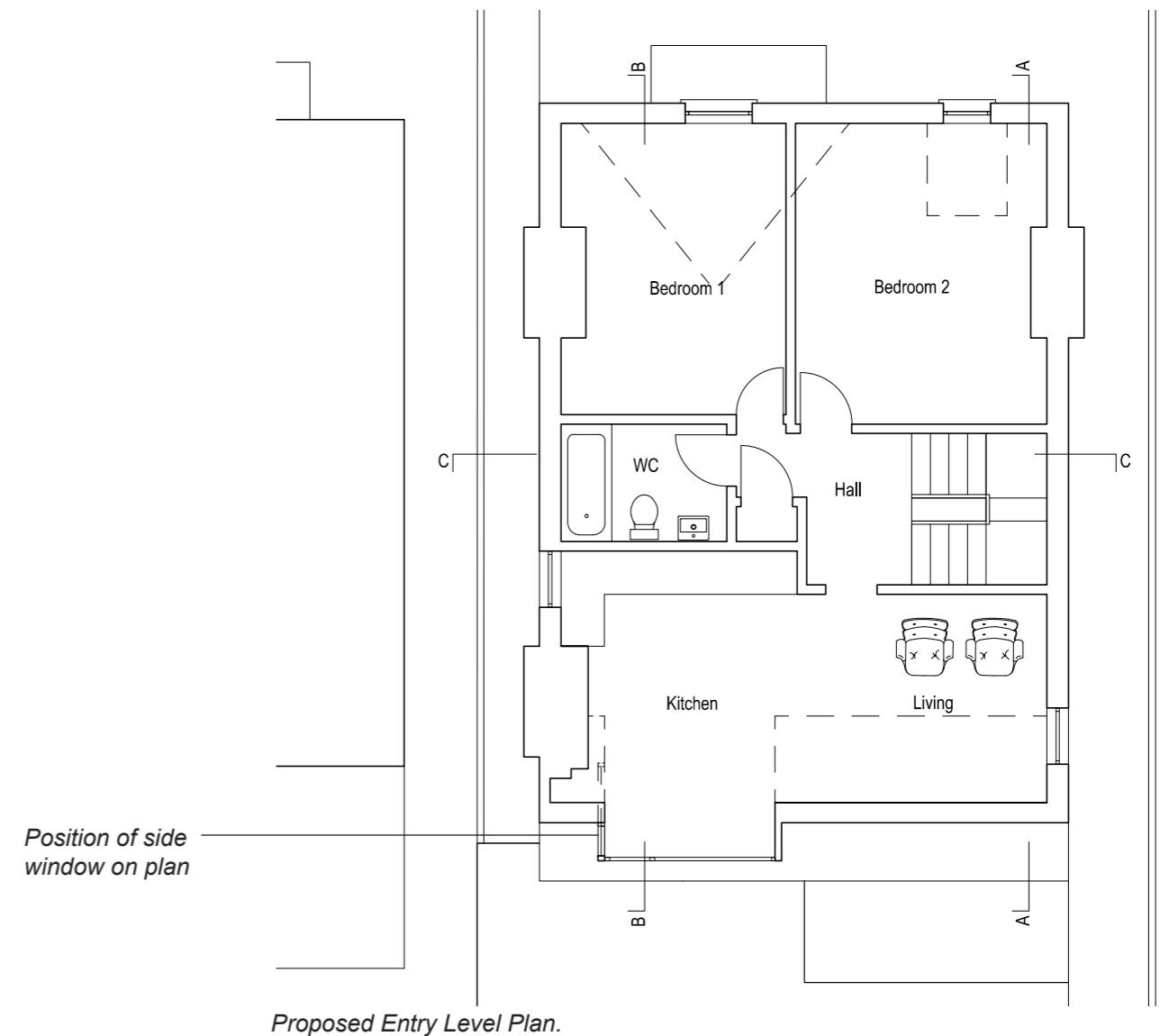
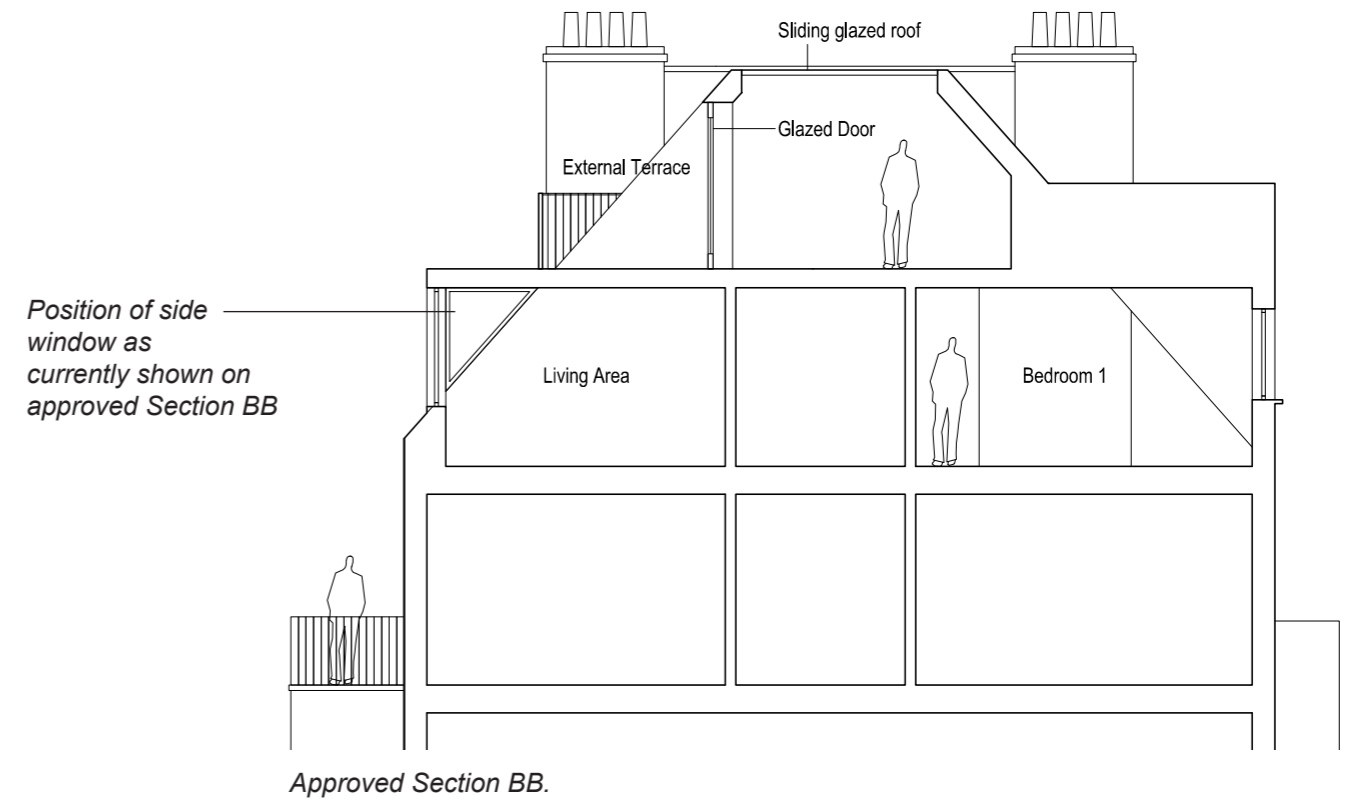
Aerial view from 'Google Earth' showing the rooflights on the neighbouring properties. No. 75 is highlighted in red.

Revision 2: Side window to proposed dormer

As seen in the photograph below, the property currently has a side dormer window facing towards Hampstead Heath. A side window on the proposed dormer window is shown on the approved section drawing BB but not on the plan. The amended drawings now show this on the plan.

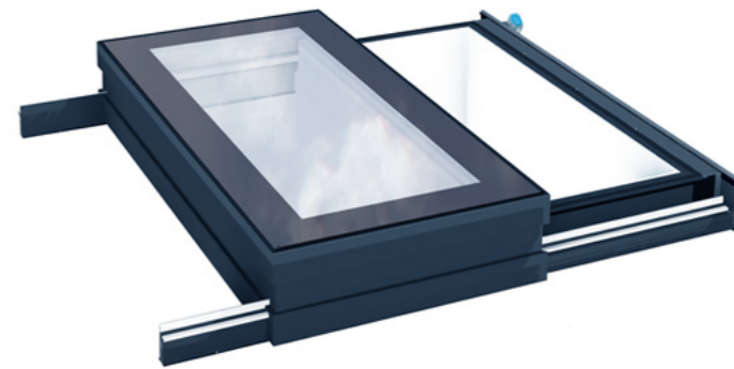


Interior view showing existing dormer window arrangement with window facing towards the Hampstead Heath. This arrangement has existed for the past 30 years.



Revision 3: Sliding Rooflight Upstand

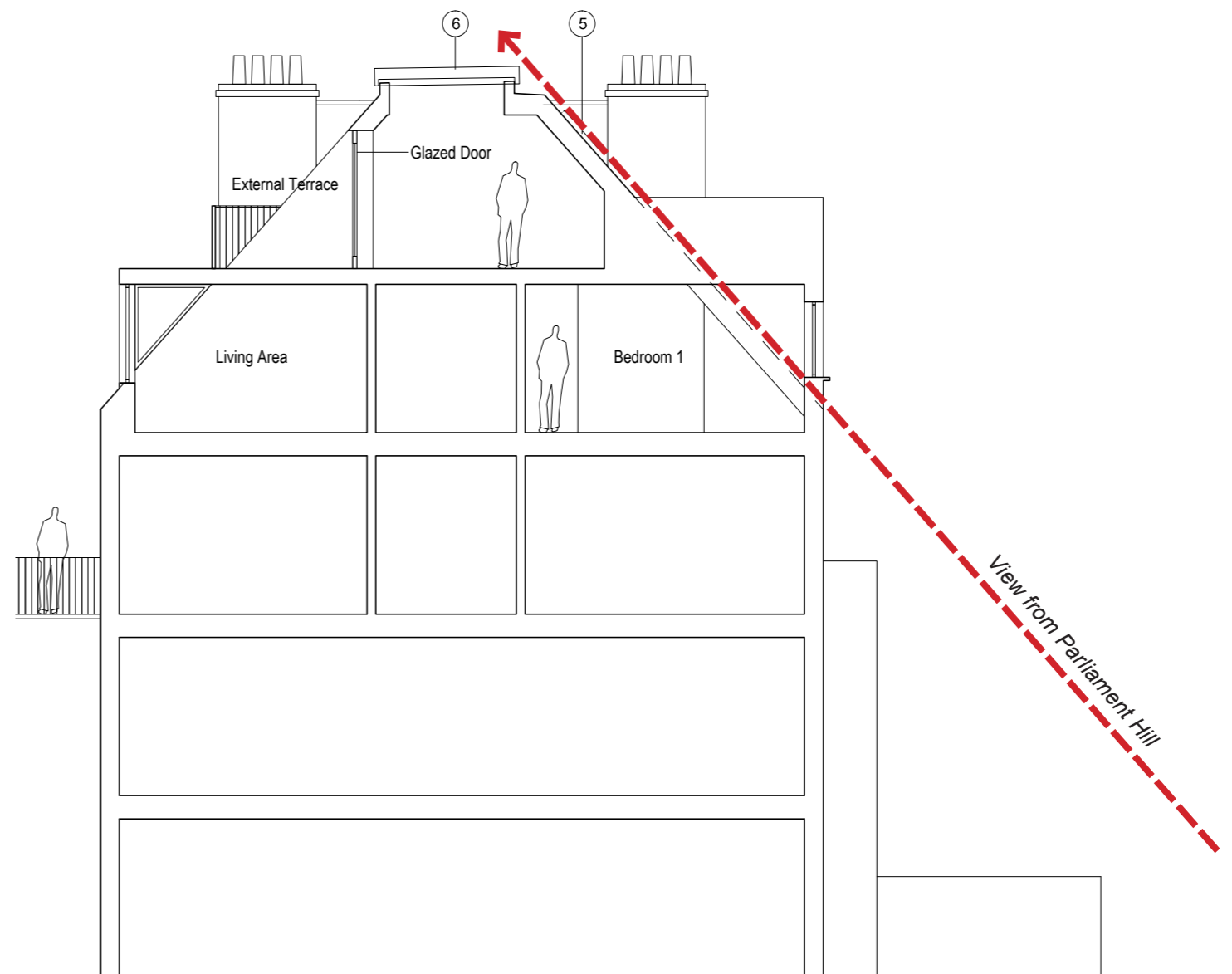
The proposed sliding rooflight will require an upstand which will sit up above the roof level and which has now been shown on the elevation and section drawings. As seen in the amended Section BB below, we have stepped this back slightly from the front elevation so that the sliding rooflight will not be visible from the street.



Indicative image showing proposed sliding rooflight



Proposed Rear Elevation showing position of sliding rooflight when closed



Proposed Section Drawing BB showing sliding rooflight set back out of the line of view from the street