

tasou
 associates

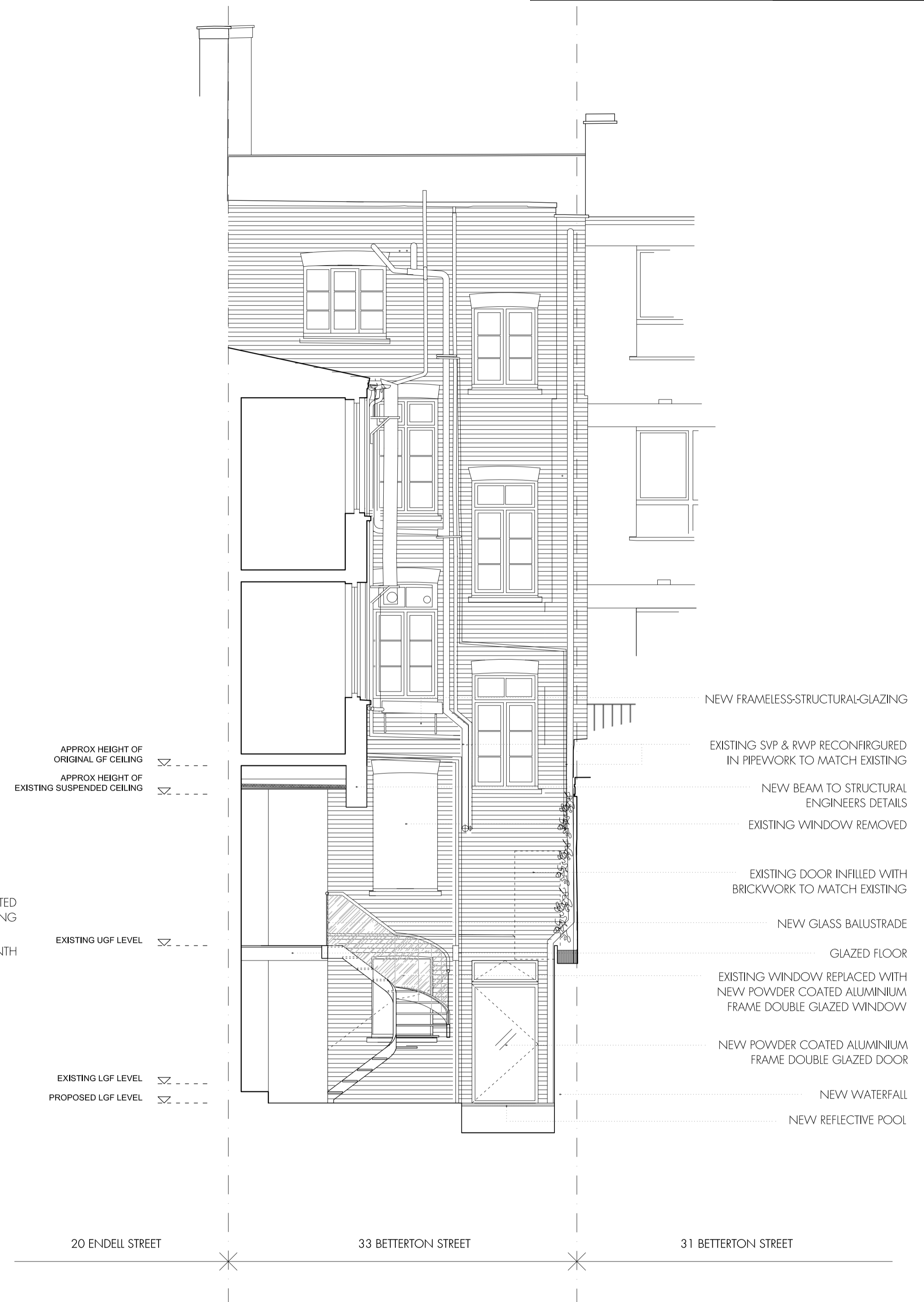
architects + structural engineers

4 Amwell Street, London. EC1R 1UQ T:020 7713 7070 F:020 7713 7071 E:tasou@tasou.co.uk

project	33 BETTERTON STREET, WC2H 9BQ, LONDON		
dwg title	PROPOSED UPPER & LOWER GROUND FLOOR PLANS		
job no.	1569	dwg no.	PP01
date	MAY 2015	scale @ A1	1:50



FRONT ELEVATION A-A



SECTION-ELEVATION B-B

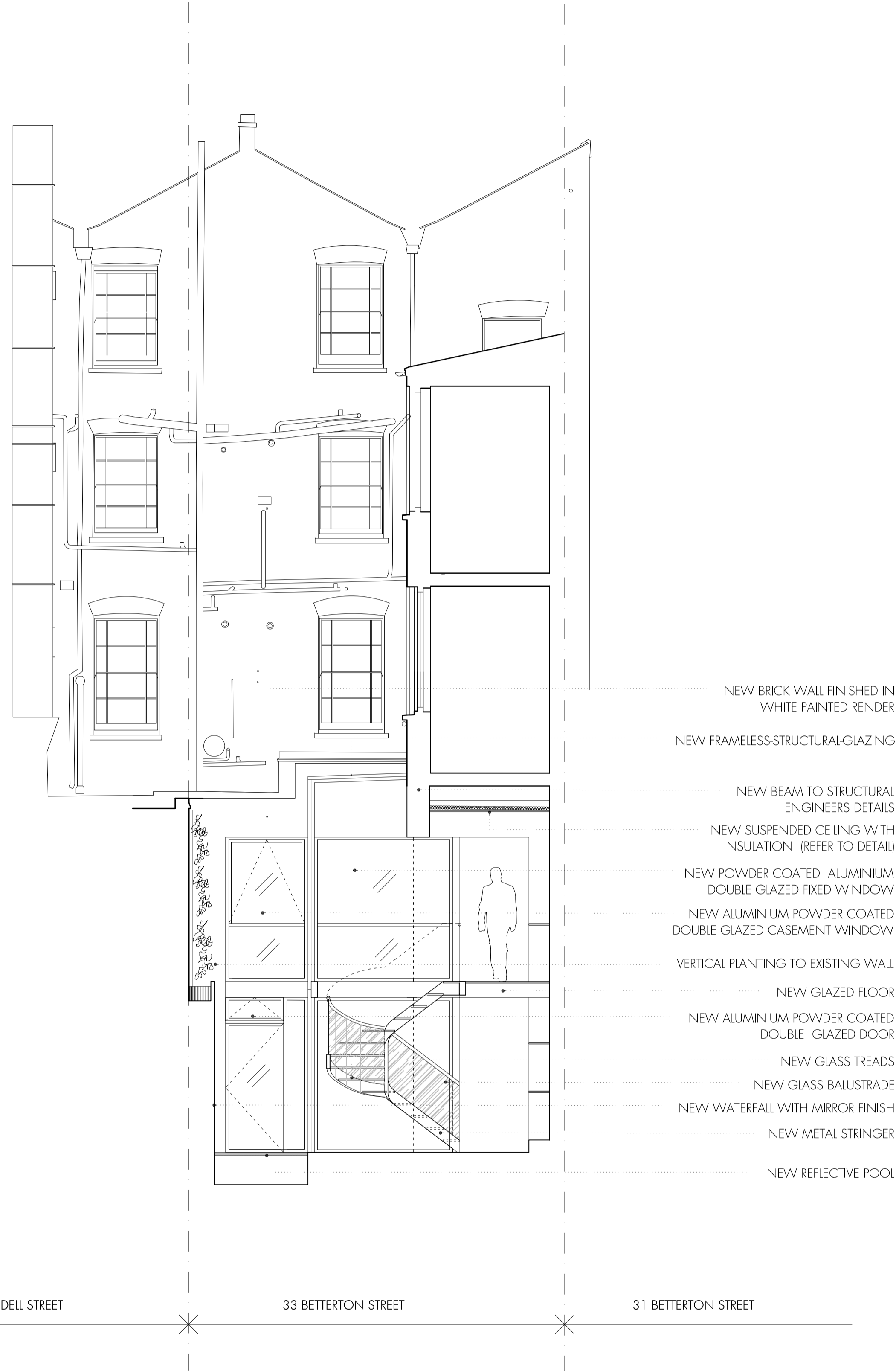
tasou
 associates

architects + structural engineers

4 Amwell Street, London. EC1R 1UQ T:020 7713 7070 F:020 7713 7071 E:tasou@tasou.co.uk

project	33 BETTERTON STREET, WC2H 9BQ, LONDON		
dwg title	SECTION A-A & B-B		
job no.	1569	dwg no.	PP02
date	MAY 2015	scale @ A1	1:50

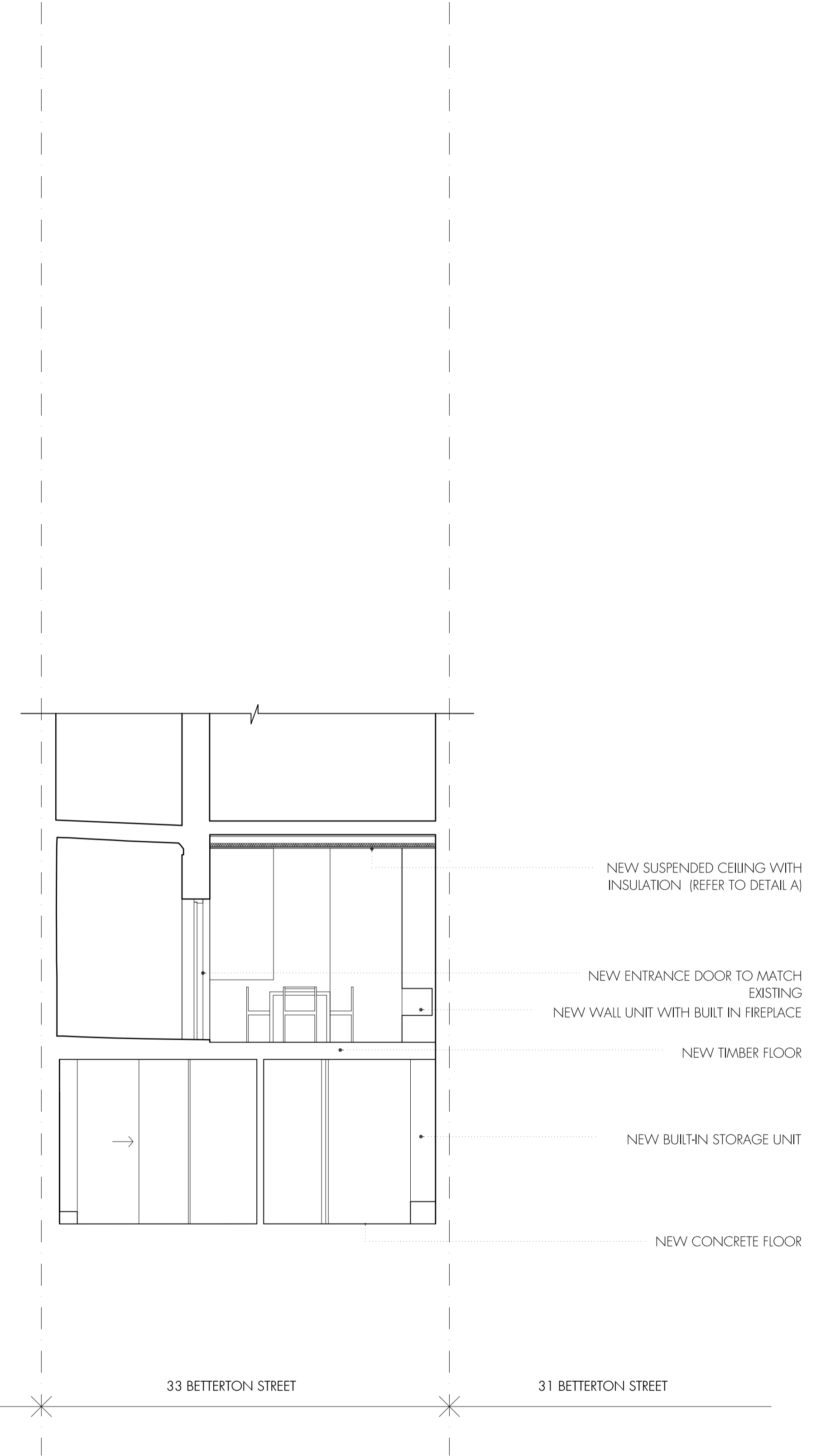




- NEW BRICK WALL FINISHED IN WHITE PAINTED RENDER
- NEW FRAMELESS-STRUCTURAL-GLAZING
- NEW BEAM TO STRUCTURAL ENGINEERS DETAILS
- NEW SUSPENDED CEILING WITH INSULATION (REFER TO DETAIL)
- NEW POWDER COATED ALUMINIUM DOUBLE GLAZED FIXED WINDOW
- NEW ALUMINIUM POWDER COATED DOUBLE GLAZED CASEMENT WINDOW
- VERTICAL PLANTING TO EXISTING WALL
- NEW GLAZED FLOOR
- NEW ALUMINIUM POWDER COATED DOUBLE GLAZED DOOR
- NEW GLASS TREADS
- NEW GLASS BALUSTRADE
- NEW WATERFALL WITH MIRROR FINISH
- NEW METAL STRINGER
- NEW REFLECTIVE POOL

20 ENDELL STREET 33 BETTERTON STREET 31 BETTERTON STREET

SECTION-ELEVATION C-C



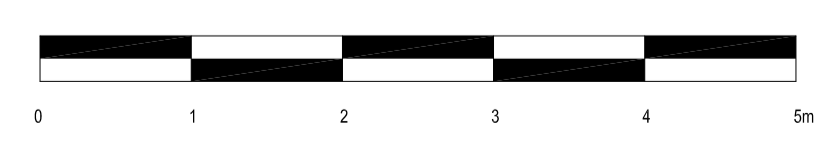
- NEW SUSPENDED CEILING WITH INSULATION (REFER TO DETAIL A)
- NEW ENTRANCE DOOR TO MATCH EXISTING
- NEW WALL UNIT WITH BUILT IN FIREPLACE
- NEW TIMBER FLOOR
- NEW BUILT-IN STORAGE UNIT
- NEW CONCRETE FLOOR

20 ENDELL STREET 33 BETTERTON STREET 31 BETTERTON STREET

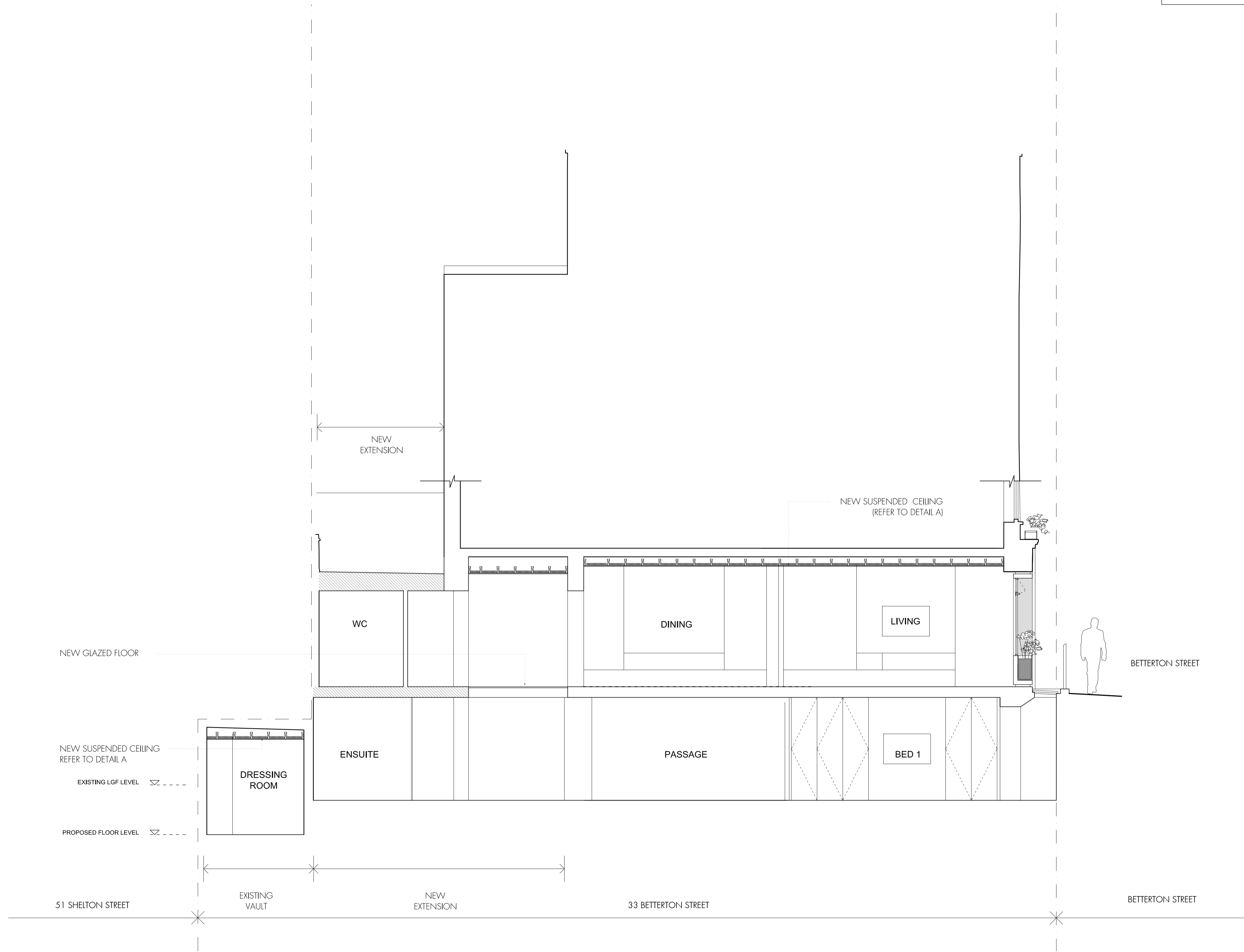
SECTION D-D

tasou
 associates

architects + structural engineers
 4 Amwell Street, London. EC1R 1UG T:020 7713 7070 F:020 7713 7071 E:tasou@tasou.co.uk



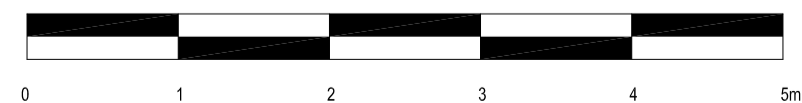
project	33 BETTERTON STREET, WC2H 9BQ, LONDON		
dwg title	SECTION-ELEVATION C-C & SECTION D-D		
job no.	1569	dwg no.	PP03
date	MAY 2015	scale @ A1	1:50



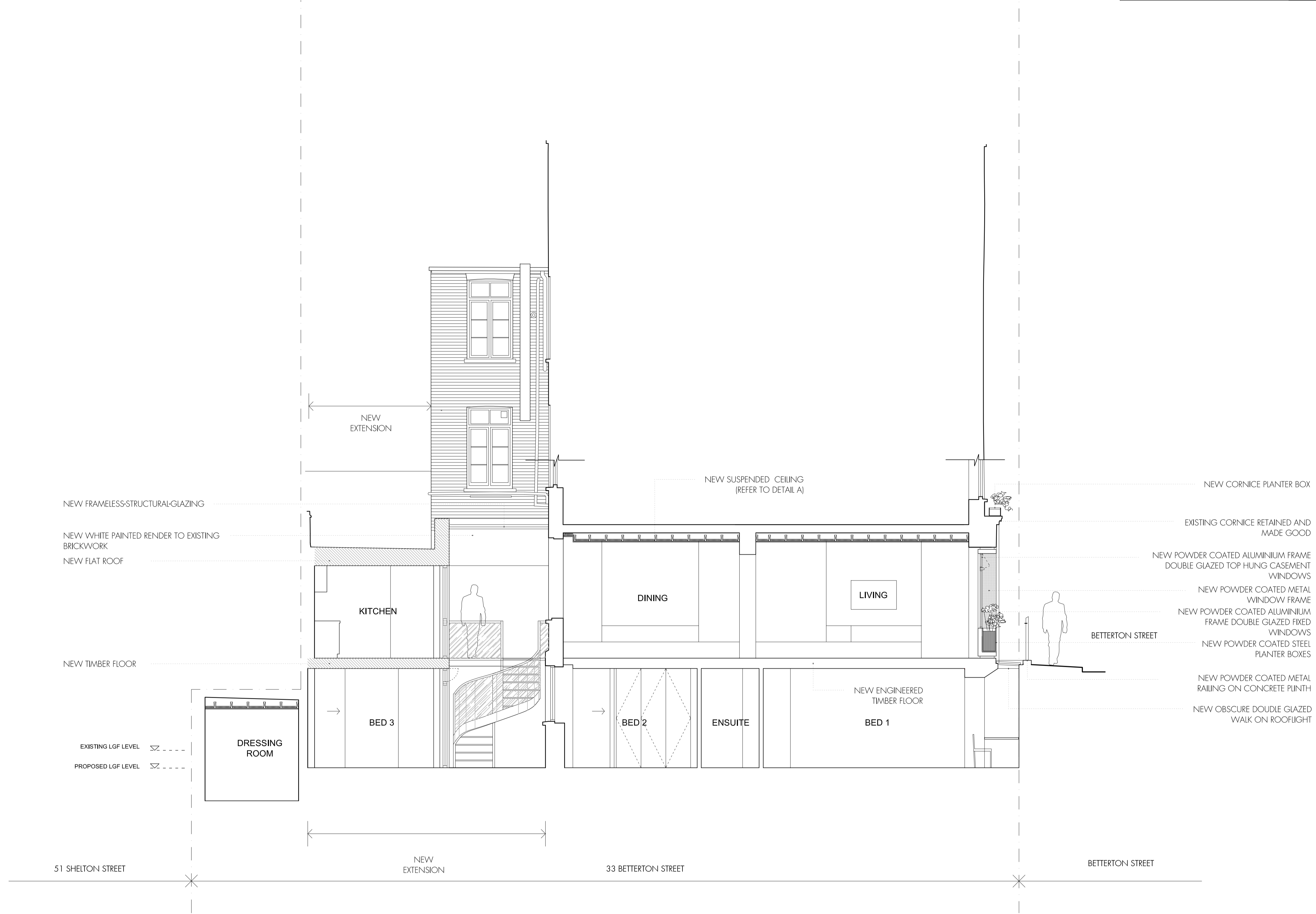
SECTION E-E

tasou
 associates
 architects + structural engineers

4 Amwell Street, London. EC1R 1UG T:020 7713 7070 F:020 7713 7071 E:tasou@tasou.co.uk



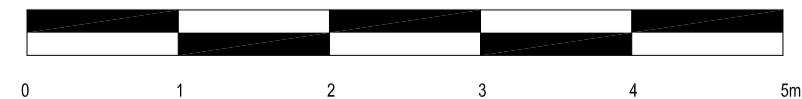
project	33 BETTERTON STREET, WC2H 9BQ, LONDON		
dwg title	SECTION E-E		
job no.	1569	dwg no.	PP04
date	MAY 2015	scale @ A1	1:50
		rev.	



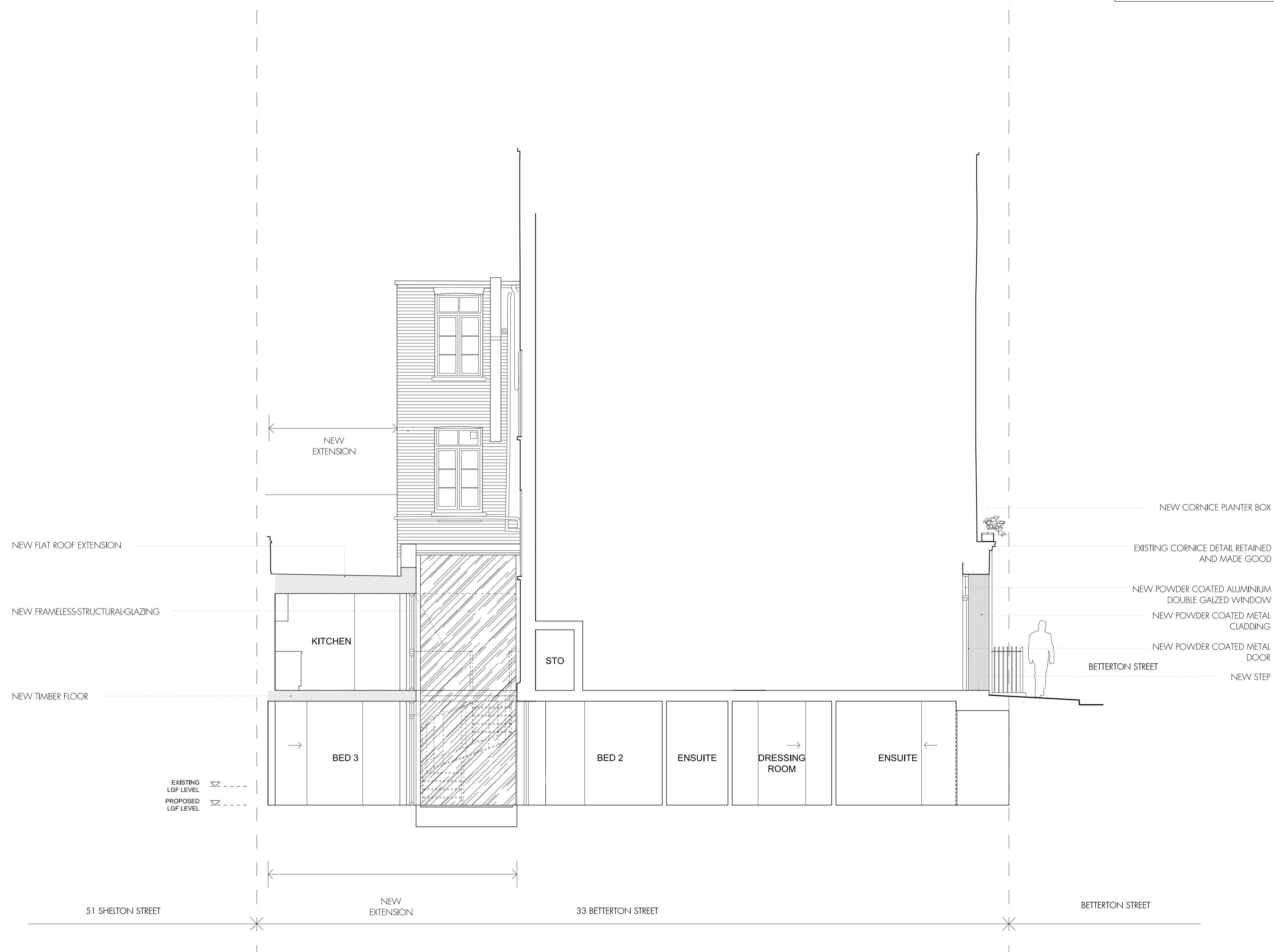
SECTION F-F

tasou
 associates architects + structural engineers

4 Amwell Street, London. EC1R 1UQ T:020 7713 7070 F:020 7713 7071 E:tasou@tasou.co.uk



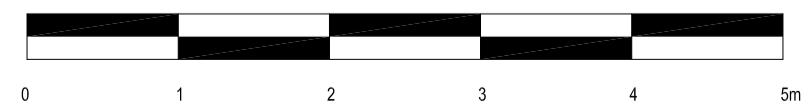
project	33 BETTERTON STREET, WC2H 9BQ, LONDON		
dwg title	SECTION F-F		
job no.	1569	dwg no.	PP05
date	MAY 2015	scale @ A1	1:50



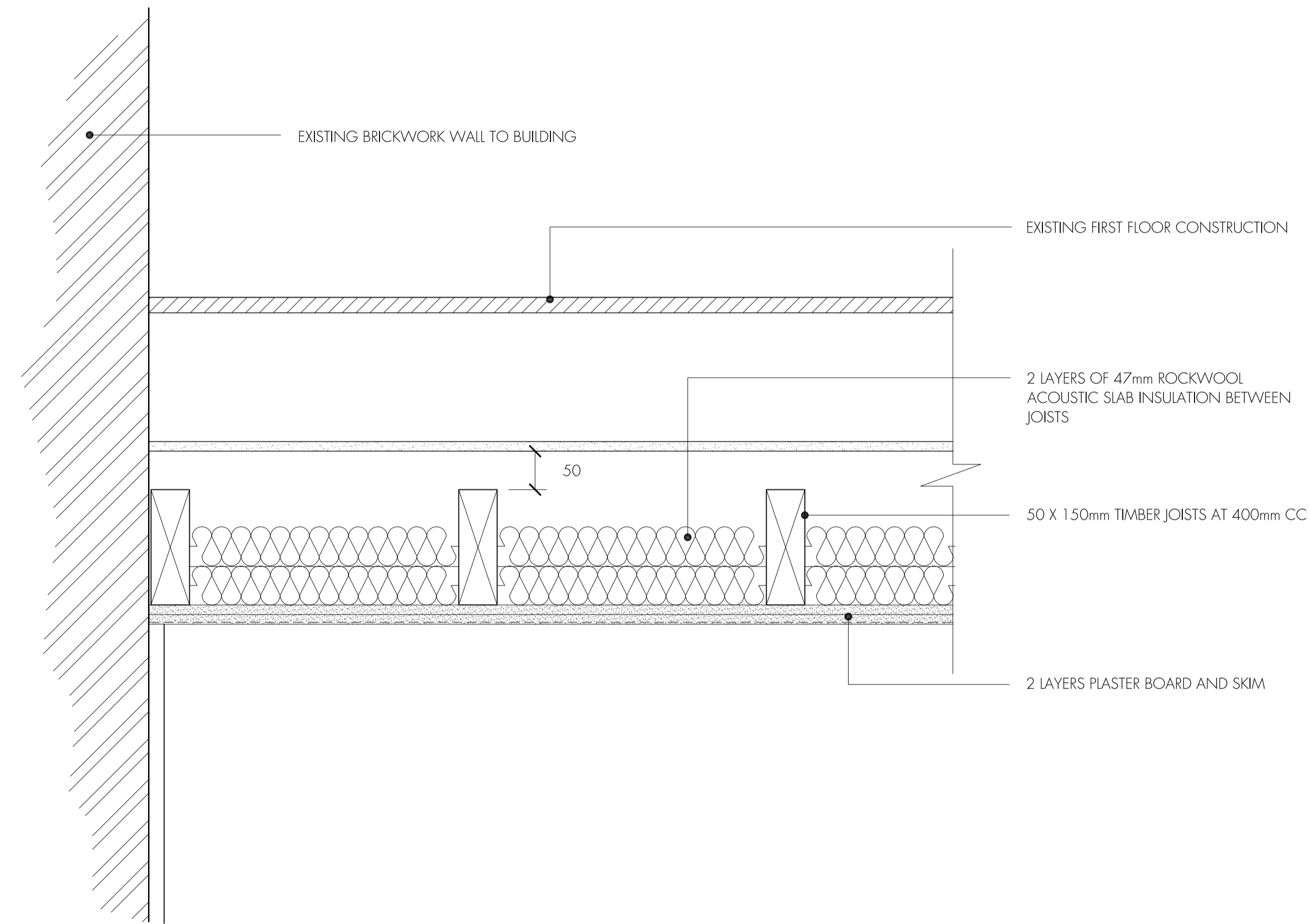
SECTION-ELEVATION G-G

tasou
 associates

architects + structural engineers
 4 Amwell Street, London. EC1R 1UQ T:020 7713 7070 F:020 7713 7071 E:tasou@tasou.co.uk



project	33 BETTERTON STREET, WC2H 9BQ, LONDON		
dwg title	SECTION G-G		
job no.	1569	dwg no.	PPO6
date	MAY 2015	scale @ A1	1:50



TYPICAL SUSPENDED CEILING DETAIL
1:5

project	33 BETTERTON STREET, WC2H 9BQ, LONDON		
dwg title	DETAIL A		
job no.	1569	dwg no.	PP07 rev.
date	MAY 2015	scale @ A1	1:5