

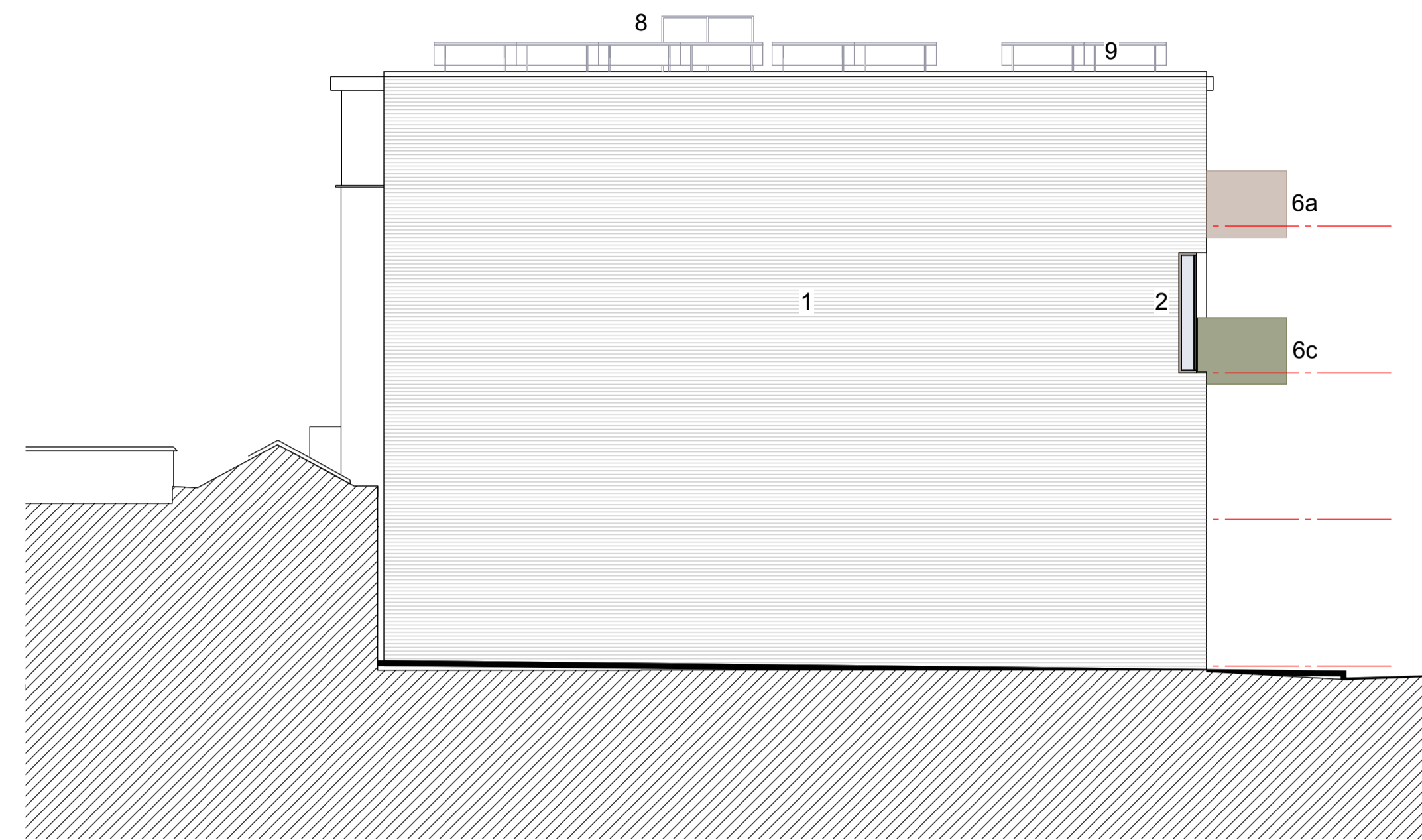
**BUILDING MATERIALS KEY:**

1. Cladding - brick: BEA Majestic Mortar colour Y58 Natural from Tarmac Building Product's Natural Range. Mortar joint to be flush.
2. Composite window frames, polyester powder coated, colour: RAL1035 metallic, clear glass.
3. Composite window frames, polyester powder coated, colour: RAL1035 metallic, obscure glass
4. Composite door and frame, glazed
5. Timber/metal door and frame, solid
- 6a. Balustrade - glass, colour: TBC
- 6b. Balustrade - glass, colour: TBC
- 6c. Balustrade - glass, colour: TBC
- 6d. Balustrade - glass, colour: TBC
- 6e. Balustrade - standard low-e glass
7. Window side panels: Glass artwork panel fixed to external frame of window, refer to drawing 416-310 for more details
8. Metal safety railings on roof
9. Photovoltaic panels on roof - see later drawing for details.

**NOTE:**  
 Final colours of glass balustrades to be agreed in writing with the Camden Council Conservation Officer.



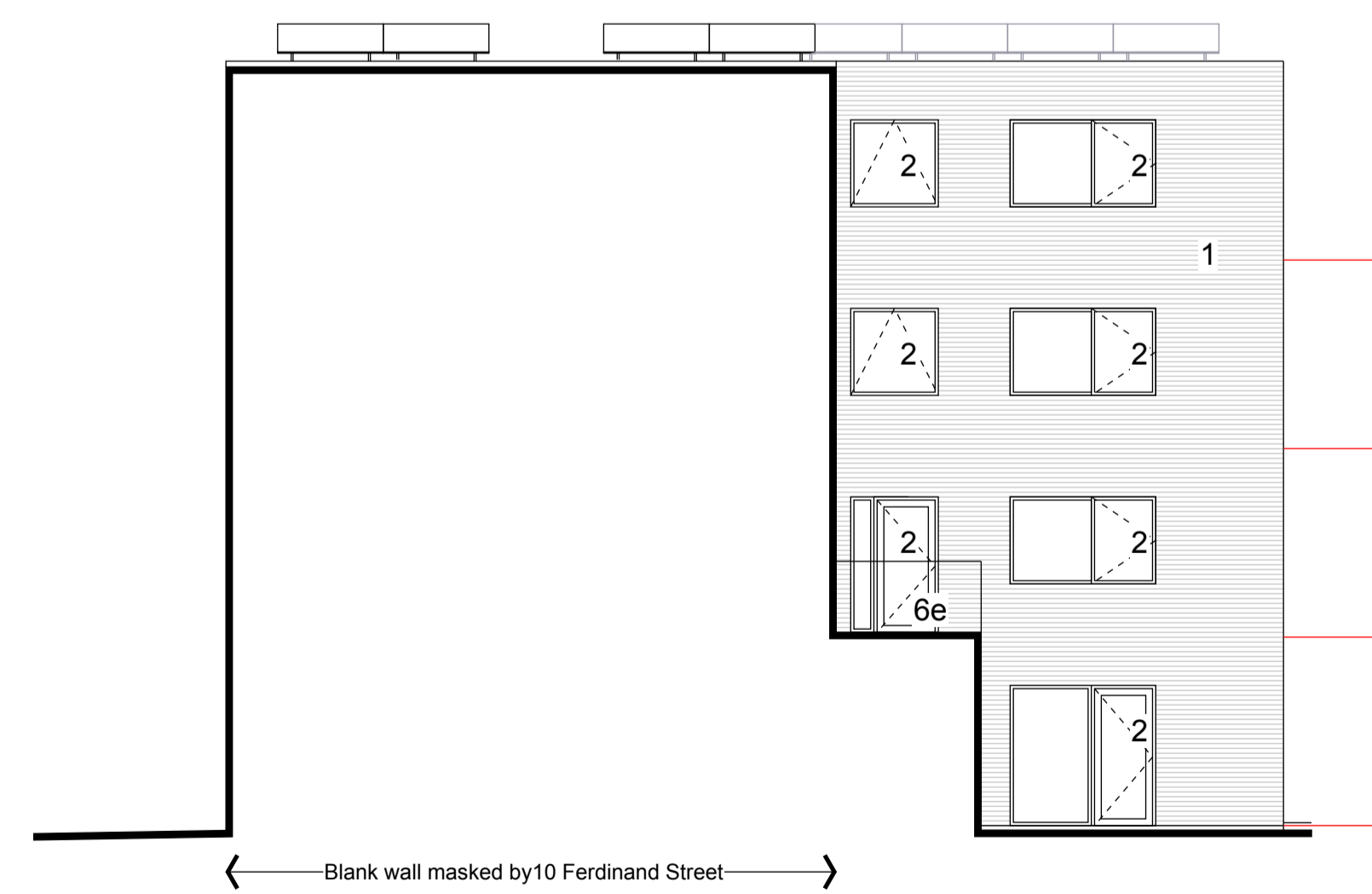
**01** West Elevation, Ferdinand Street  
 Scale 1:200 @ A3



**02** North Elevation  
 Scale 1:200 @ A3



**03** East Elevation  
 Scale 1:200 @ A3



**04** South Elevation  
 Scale 1:200 @ A3

03	Note re. colour definition added.	YM	08Jun15	DL
02	Issued for TP condition	GR	21May15	DL
01	Generally updated	GR	07Jan15	DL
00	Issued for Town Planning conditions approval.	GR	11Dec14	DL
Mark	Revision	Drawn	Date	Checked

**lees munday • architects**

Netley House  
 Shere Road  
 Gomshall  
 Guildford  
 Surrey GU5 9QA  
 01483 331945 / 07795 158754 / 07946 203056  
 mail@leesmunday.com

Client's name  
**Optic Realm**

Job title  
**Ferdinand Street**

Drawing title  
**TP Conditions  
 Elevations materials**

Scale  
**1 : 100 @ A1, 1 : 200 @ A3**



Drawn	Checked	Date
YM	DL	07Jul14

Job No	Drawing No	Rev
13-011	413-210	03

Status  
**TP SUBMISSION**