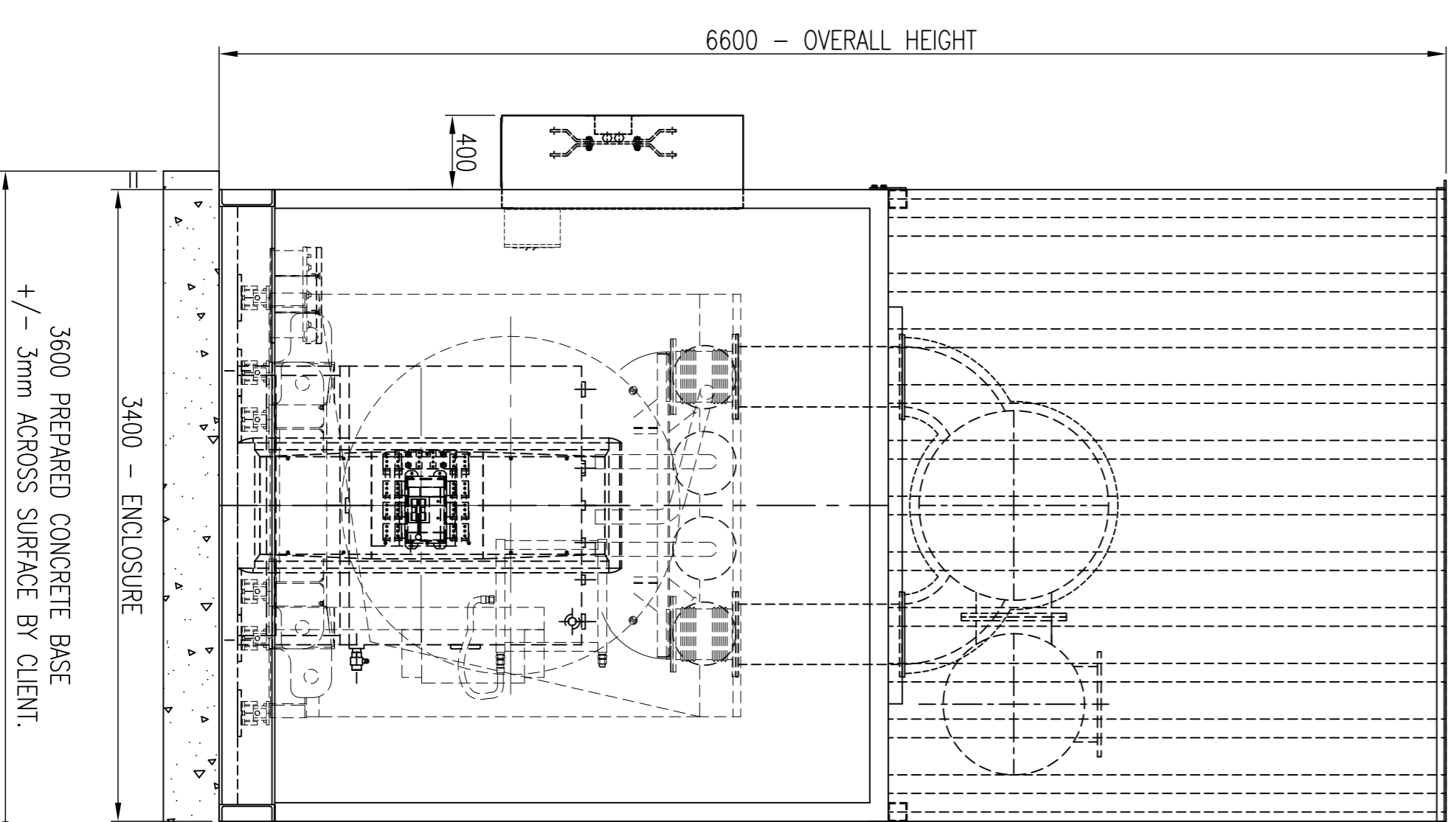
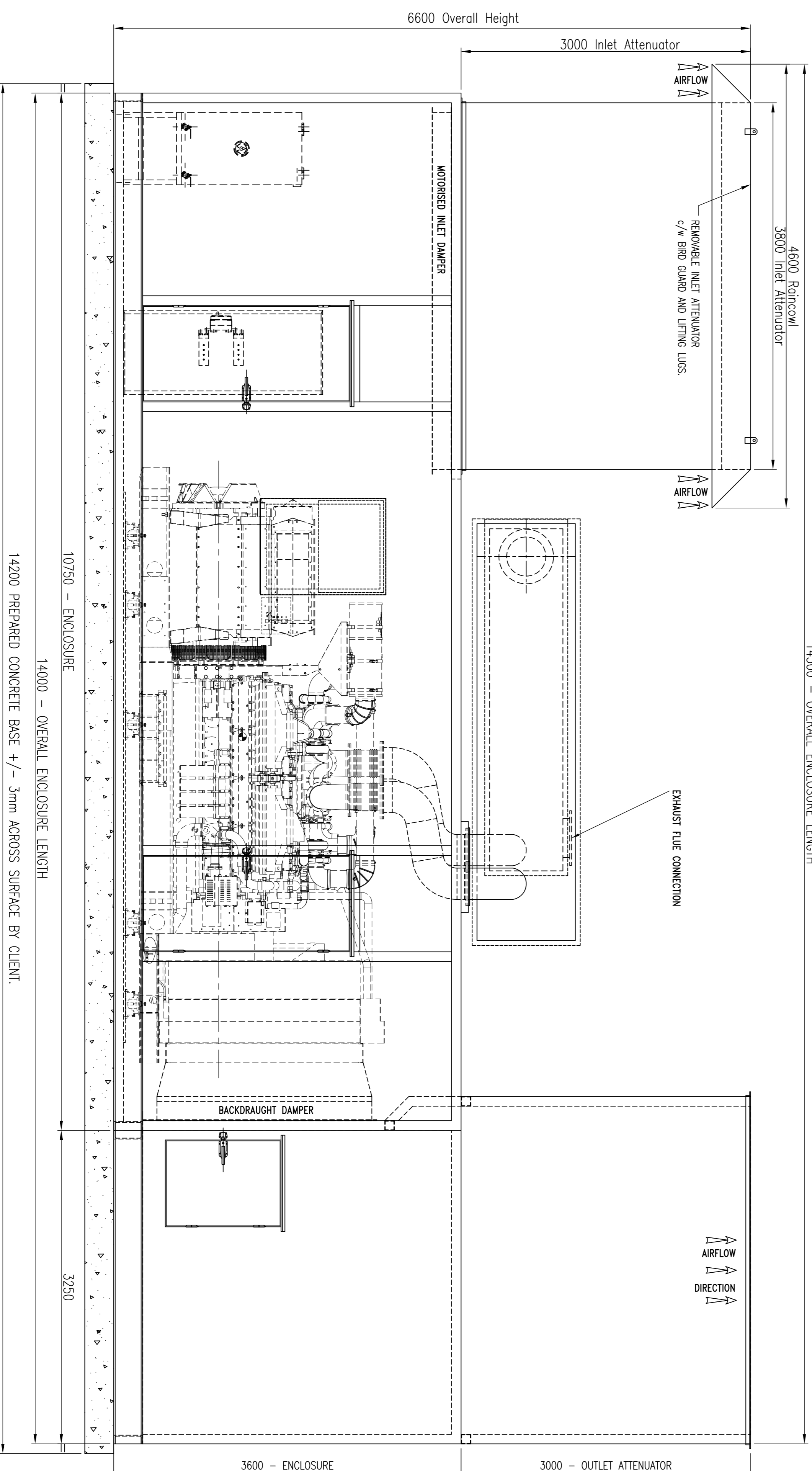
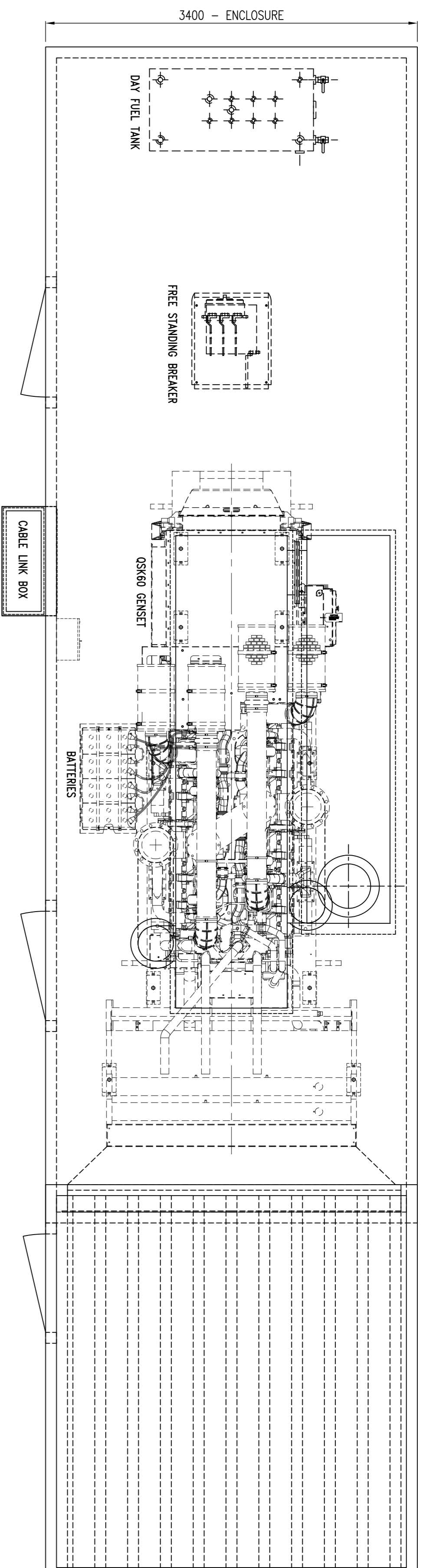


Notes:-

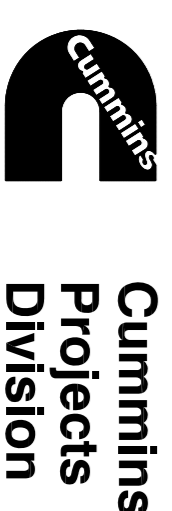
Blind Acoustic Continer - Enclosure to reduce noise level from GSK6023 Generator Set (Model C200005 2000kW-1600kW S/B) to a level of 65dBA at 1m in free field conditions.
Acoustic Enclosure + Genset 39,500kgs. (Net) Approx.
Paint Finish: 2-pack Air drying Glass Internal Surfaces: White RAL 9010. External Surfaces: RAL 7040-Window Grey. Blinded/Acoustic Base: Black



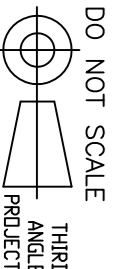
Rev	Date	Description
A	22/06/11	PROVISIONAL ISSUE.

THE COPYRIGHT IN THIS DRAWING IS OWNED BY CUMMINS POWER GENERATION LTD. AND IT MAY NOT BE PUBLISHED OR REPRODUCED IN ANY MATERIAL FORM WITHOUT THE WRITTEN CONSENT OF THE COMPANY

Client			
Project			
Title	Generator Enclosure - 65dBA at 1m		
Scale	@ A1	Drawn G.A.C.	Date 22/06/11
1:30	Checked	Date	
	Verified	Date	
Stage	Drawing Number	Rev.	
1	11-03001-1A	-	



Cummins Diesel Power Generation Ltd.,
40-44 Rutherford Drive,
Park Farm Industrial Estate,
Wallingborough,
Northants, NN8 6AN
Tel: (01933) 334200



DO NOT SCALE

ANGLED PROJECTION