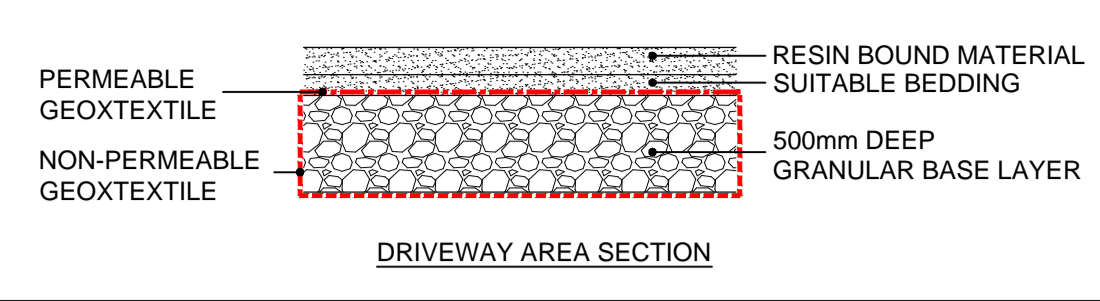
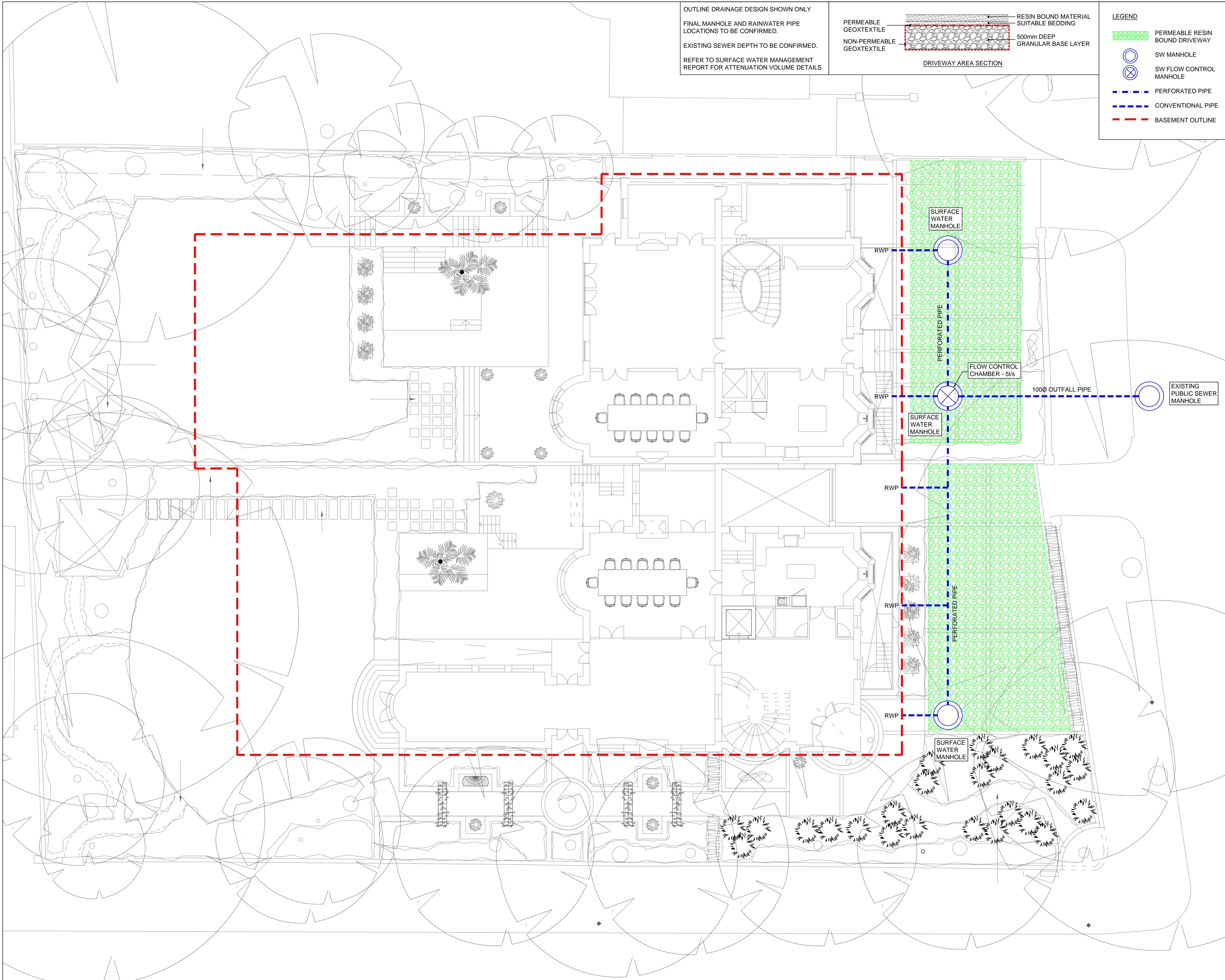


OUTLINE DRAINAGE DESIGN SHOWN ONLY  
FINAL MANHOLE AND RAINWATER PIPE  
LOCATIONS TO BE CONFIRMED.  
EXISTING SEWER DEPTH TO BE CONFIRMED.  
REFER TO SURFACE WATER MANAGEMENT  
REPORT FOR ATTENUATION VOLUME DETAILS



**LEGEND**

- PERMEABLE RESIN BOUND DRIVEWAY
- SW MANHOLE
- SW FLOW CONTROL MANHOLE
- PERFORATED PIPE
- CONVENTIONAL PIPE
- BASEMENT OUTLINE



Rev	Date	Drawn	Eng	Amendments
C1	12.02.15	MS	NC	CONSTRUCTION ISSUE

**HEYNE|TILLET|STEEL**  
STRUCTURAL ENGINEERS

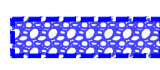
Job Name:  
**73 - 75 AVENUE ROAD  
LONDON**

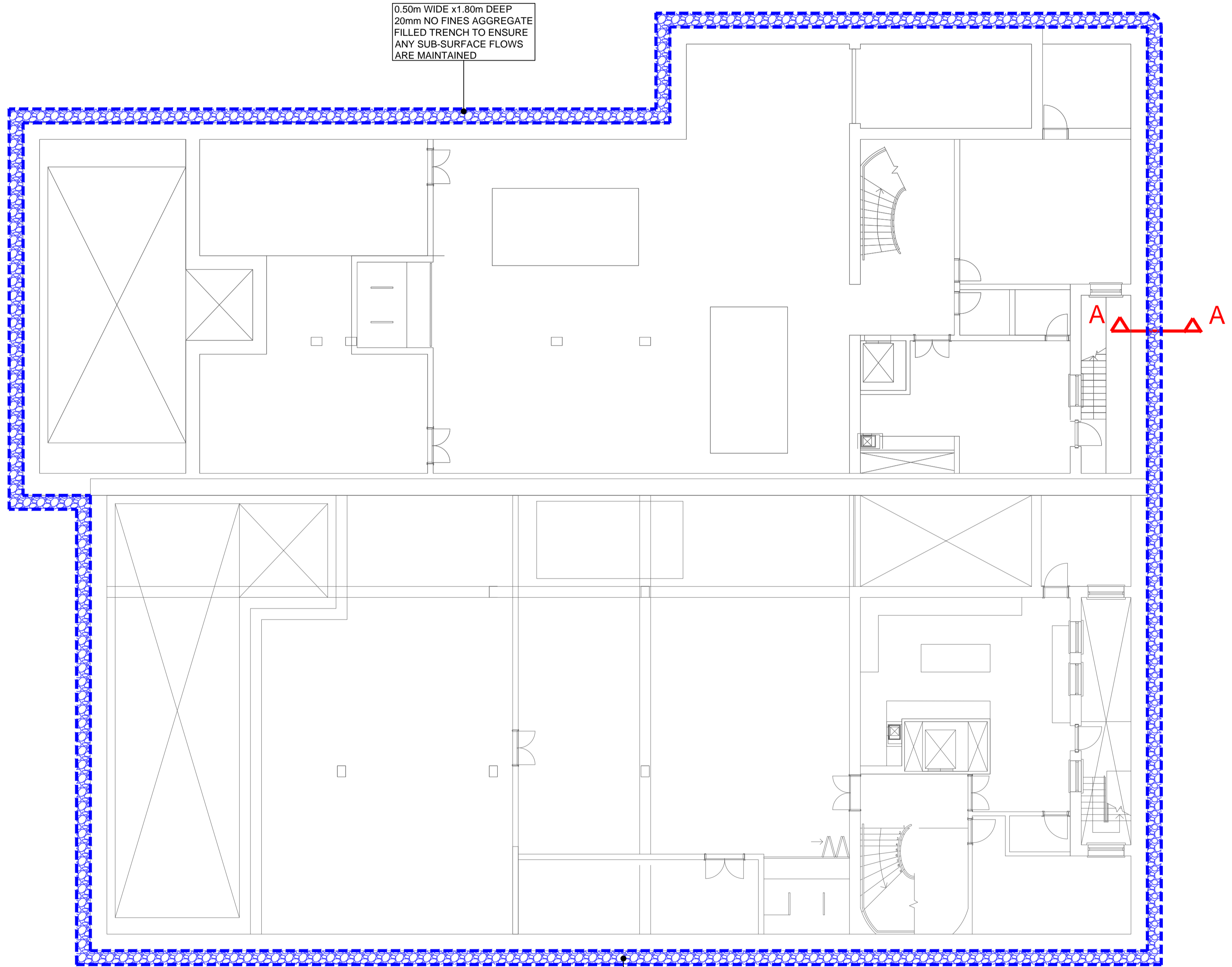
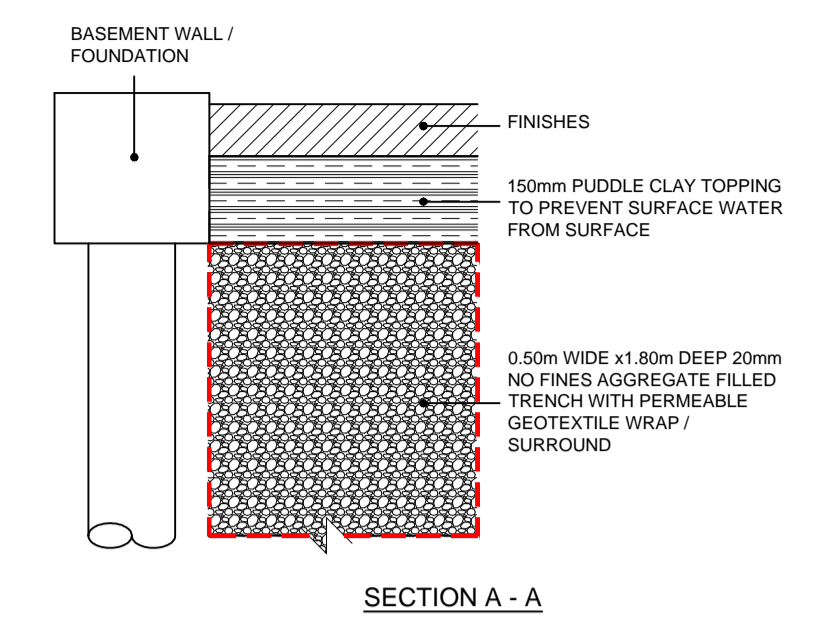
Drawing Title:  
**SURFACE WATER MANAGEMENT  
STRATEGY LAYOUT**

Scale: 1:100 @ A1, 1:200 @ A3

Purpose of Issue: INFORMATION

Drawing No. 1247 / SK01 Rev. P1

**LEGEND**  
 TRENCH ALONG BASEMENT WALL / FOUNDATIONS



0.50m WIDE x 1.80m DEEP  
 20mm NO FINES AGGREGATE  
 FILLED TRENCH TO ENSURE  
 ANY SUB-SURFACE FLOWS  
 ARE MAINTAINED

0.50m WIDE x 1.80m DEEP  
 20mm NO FINES AGGREGATE  
 FILLED TRENCH TO ENSURE  
 ANY SUB-SURFACE FLOWS  
 ARE MAINTAINED

Rev	Date	Drawn	Eng	Amendments
C1	12.02.15	MS	NC	CONSTRUCTION ISSUE

**HEYNE|TILLET|STEEL**  
 STRUCTURAL ENGINEERS

Job Name:  
**73 - 75 AVENUE ROAD  
 LONDON**

Drawing Title:  
**SURFACE WATER MANAGEMENT  
 STRATEGY BASEMENT LAYOUT**

Scale: 1:100 @ A1, 1:200 @ A3

Purpose of Issue: INFORMATION

Drawing No. 1247 / SK02 Rev. P1