

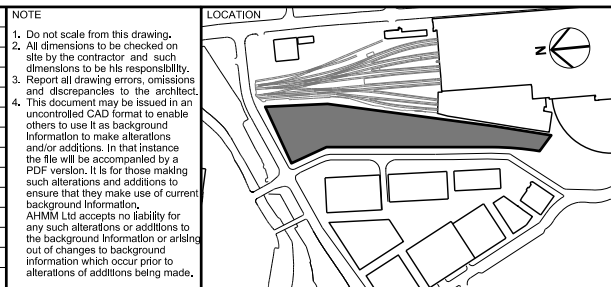


KEY	REV	DATE
 FREEHOLD BOUNDARY		
 APPLICATION SITE		

NOTES
1. KXC freehold boundary taken from KXC GFreehold - postBR drawing received from Argent March 2012
2. Illustrative scheme extent of Zone A: outline maximum planning envelope taken from Allies & Morrison drawing 280_01_03_102 (Rev P2) received July 2012
3. Hoarding line: boulevard kerb line; trees taken from 16531-006-10E-KXC Topographical Survey drawing received from Argent March 2012
4. Zone A land ownership boundary taken from Title area and Below ground area drawings received from Argent September 2012

CONSULTANTS	
CLIENT:	
CONTRACTOR:	
STRUCTURAL ENGINEER:	
MECHANICAL ENGINEER:	
COST CONSULTANT:	
PROJECT MANAGER:	
ACOUSTIC CONSULTANT:	
CLADDING CONSULTANT:	
SPECIFICATIONS CONSULTANT:	

NOTE
1. Do not scale from this drawing.
2. All dimensions to be checked on site by the contractor and such dimensions to be his responsibility.
3. Report all drawing errors, omissions and discrepancies to the architect.
4. This document may be issued in an uncontrolled CAD format to enable others to use it as background information to make alterations and/or additions. In that instance the file will be accompanied by a PDF version. It is for those making such alterations and additions to ensure that they make use of current background information. AHMM Ltd accepts no liability for any such alterations or additions to the background information or arising out of changes to background information which occur prior to alterations of additions being made.



Job title DEVELOPMENT ZONE A KINGS CROSS CENTRAL	status
drawing title SITE LOCATION PLAN	
scale 1:625@A1; 1:1250@A3	
drawing no	