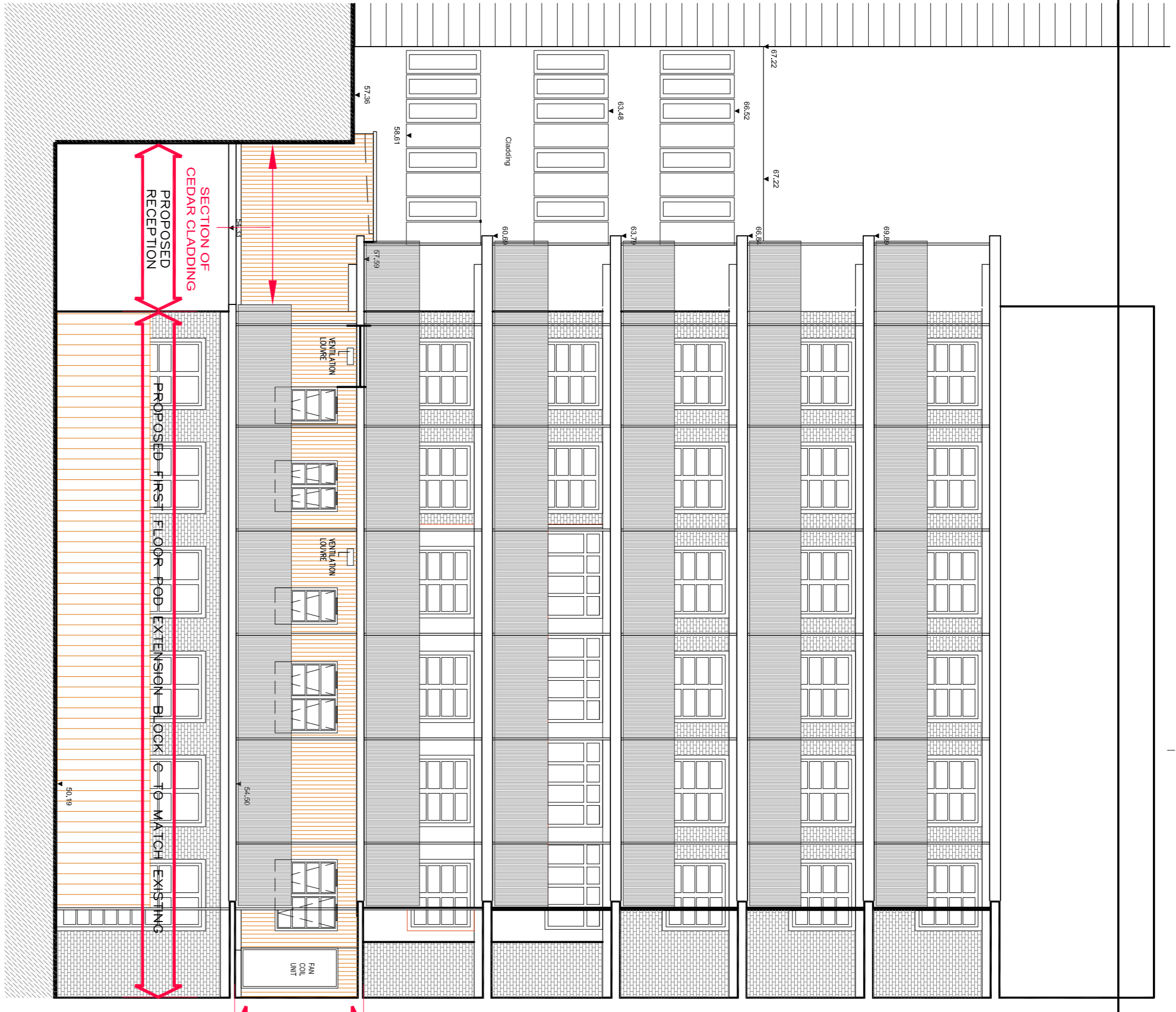
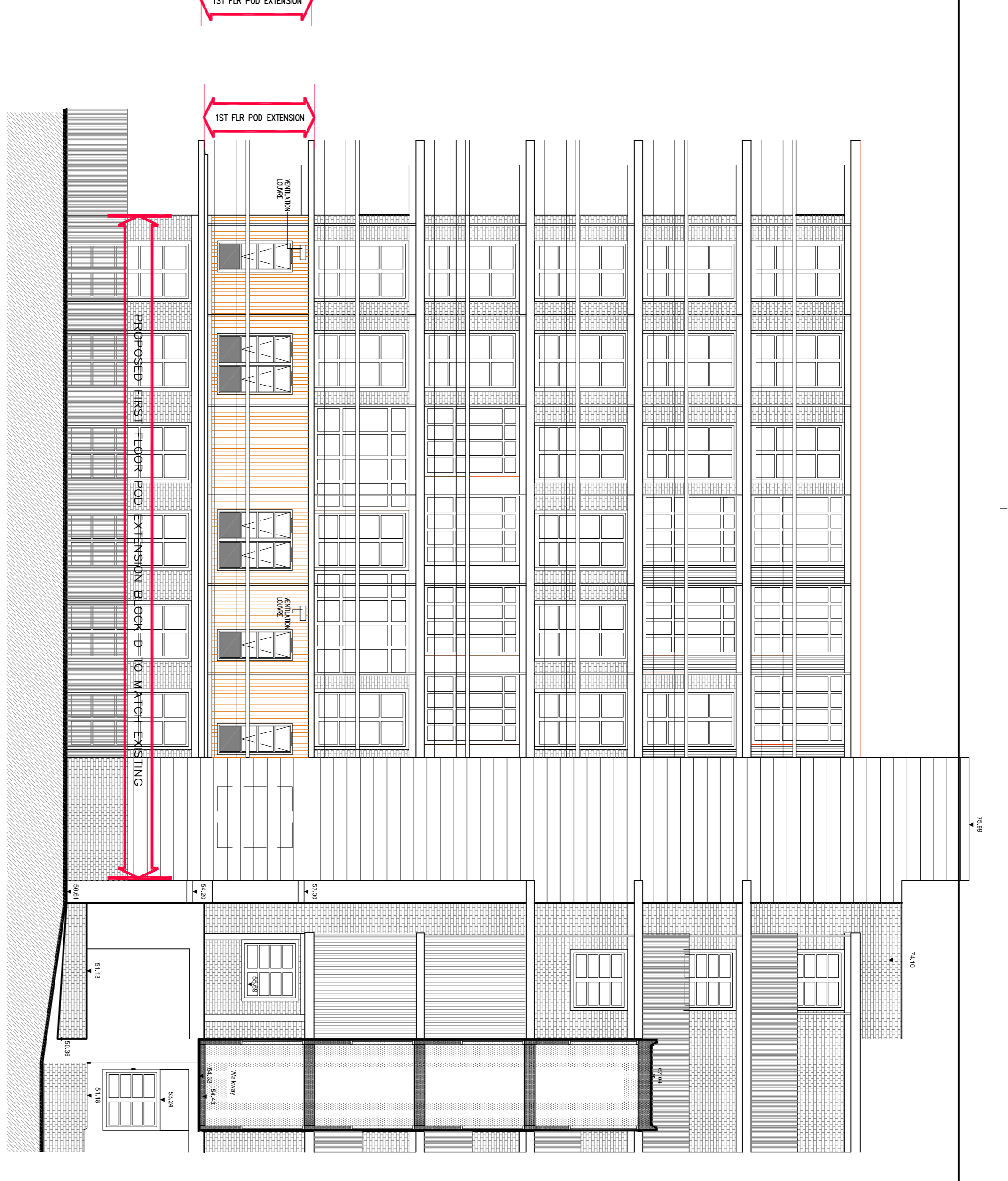


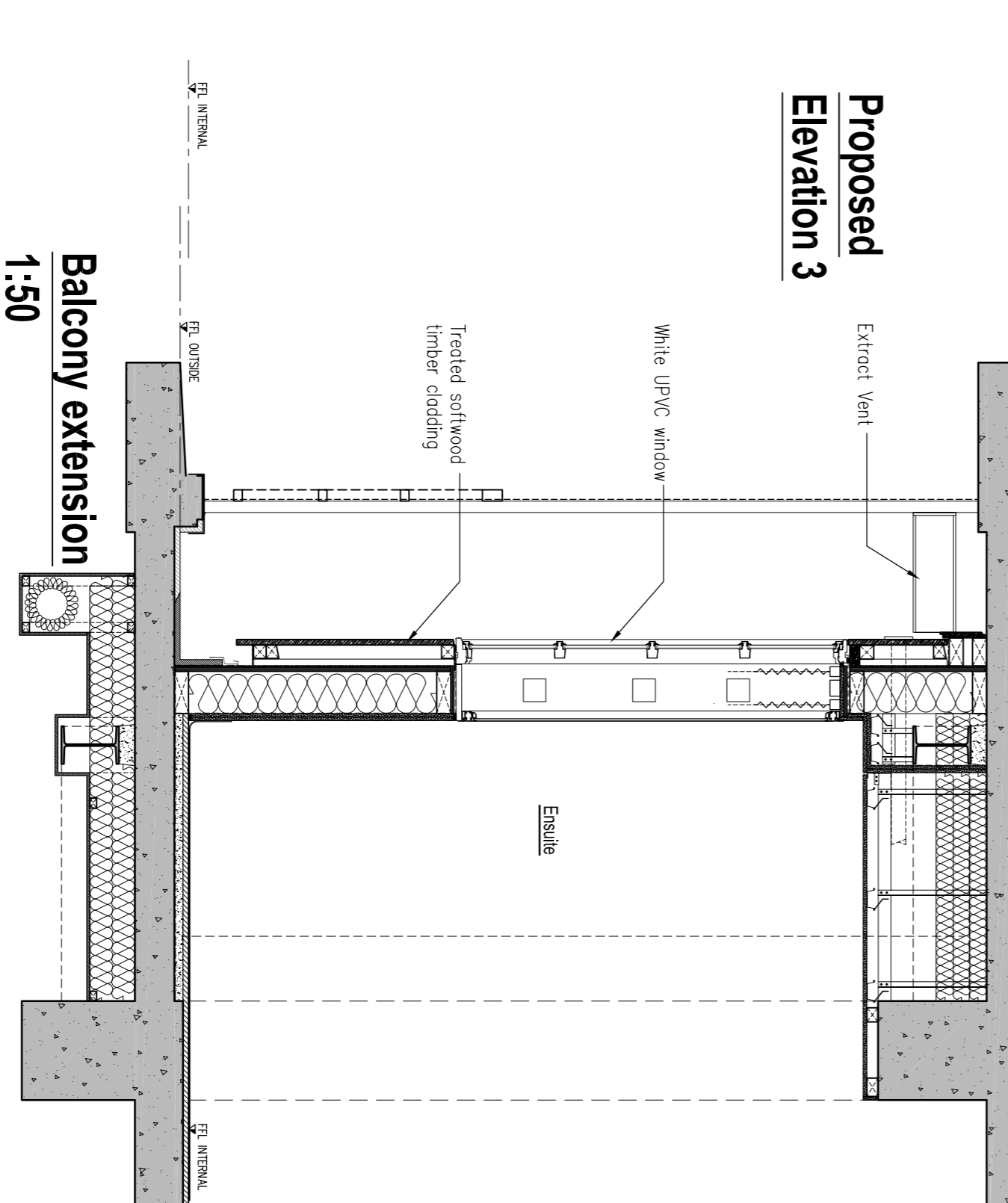
Proposed Elevation 3
on block C



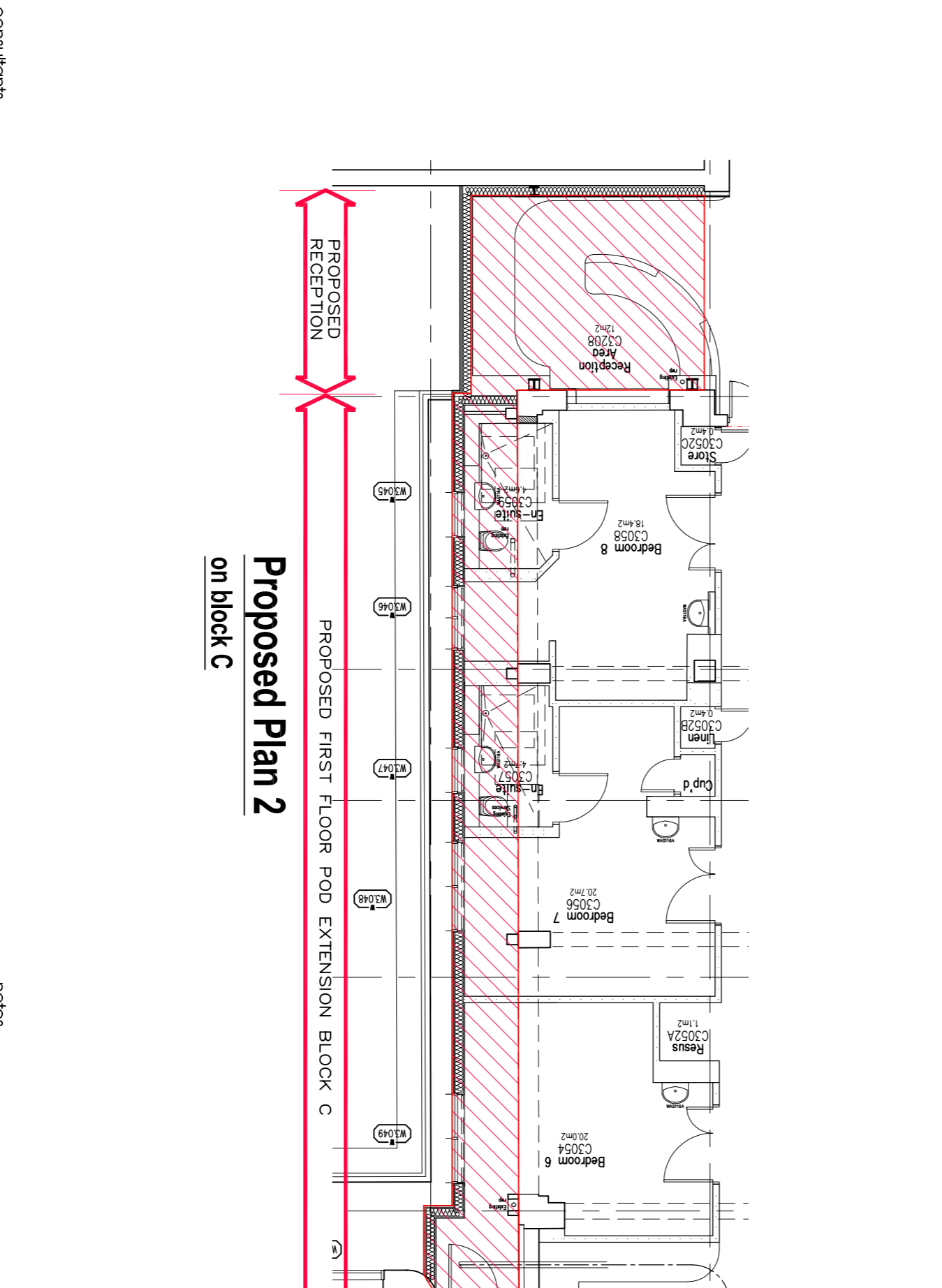
Proposed Elevation 2
on block C



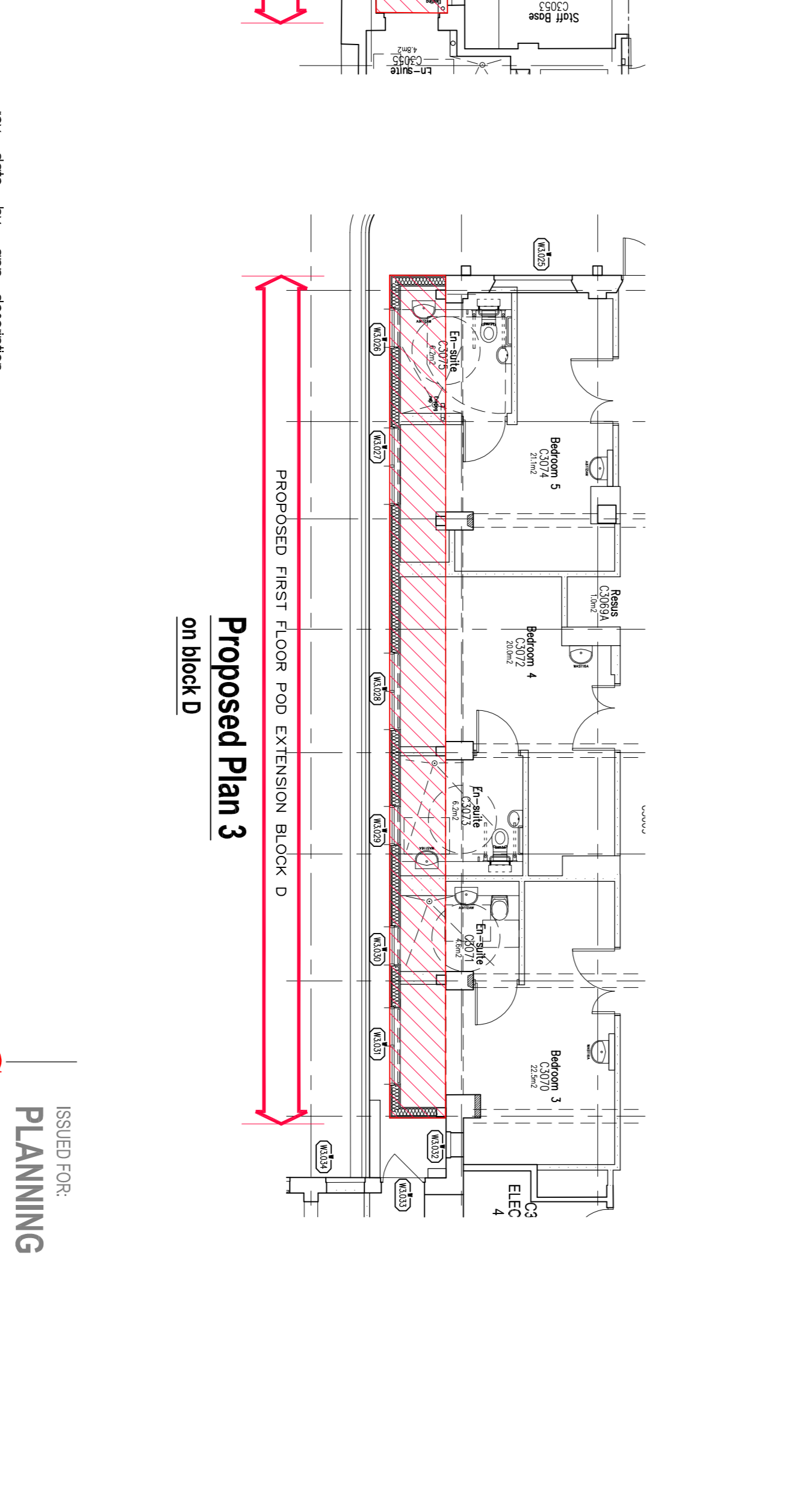
Proposed Elevation 3
on block D



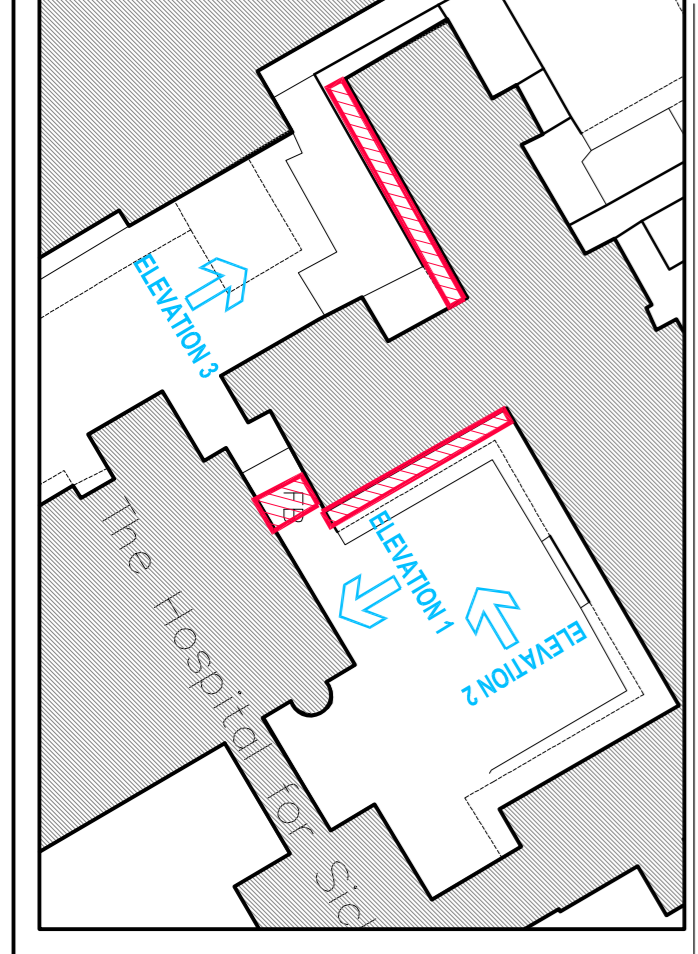
Proposed Elevation 3
on block D



Proposed Plan 2
on block C



Proposed Plan 3
on block D



consultants

NOTES
Do not scale this drawing.
All dimensions to be checked by the Contractor before construction proceeds.
This drawing is the copyright of Wilkins Gray International LLP and shall not be in any way used or reproduced without their prior written consent.

rev	date	by	app.	description
A	29.05.15	TP		Reception section added
B	29.05.15	ML		Reception pod adjusted

location
WGH

ISSUED FOR: PLANNING

Wilkins Gray International LLP
Colechurch House, 1 London Bridge Walk, LONDON, SE1 2SX
Tel: 020 7940 8400 Fax: 020 7940 8444 mci@wgi.co.uk

Project Title: GOSH IPP

Drawing Title: PROPOSED SOUTHWOOD ELEVATIONS TO BLOCKS C & D

Author: ABB	Checker: TP	Scale: 1:100@50M41
Titled: [blank]	Plot: [blank]	Date: 18.03.2015
Project No: 115002	Drawing No: P005	Revision: B