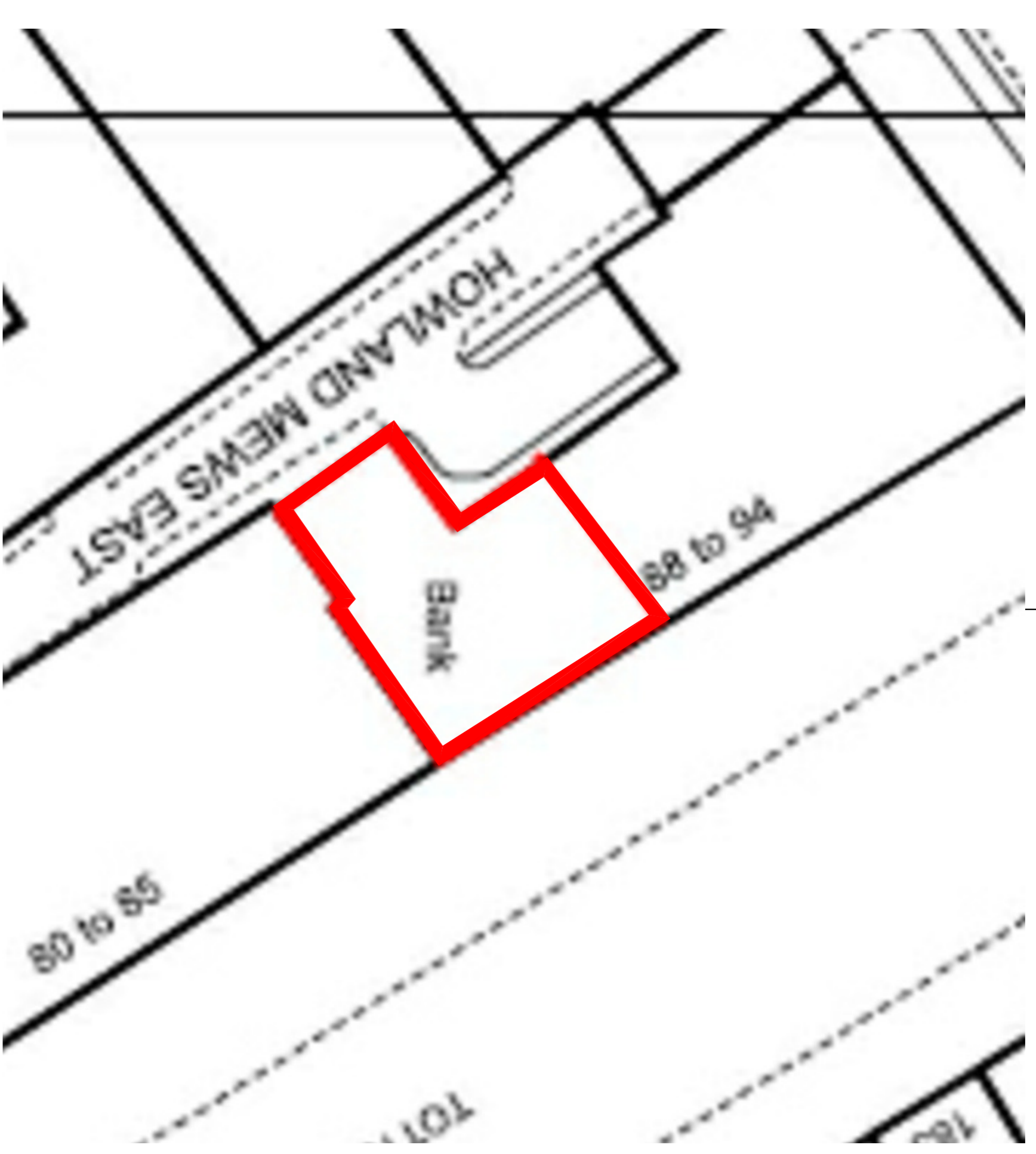
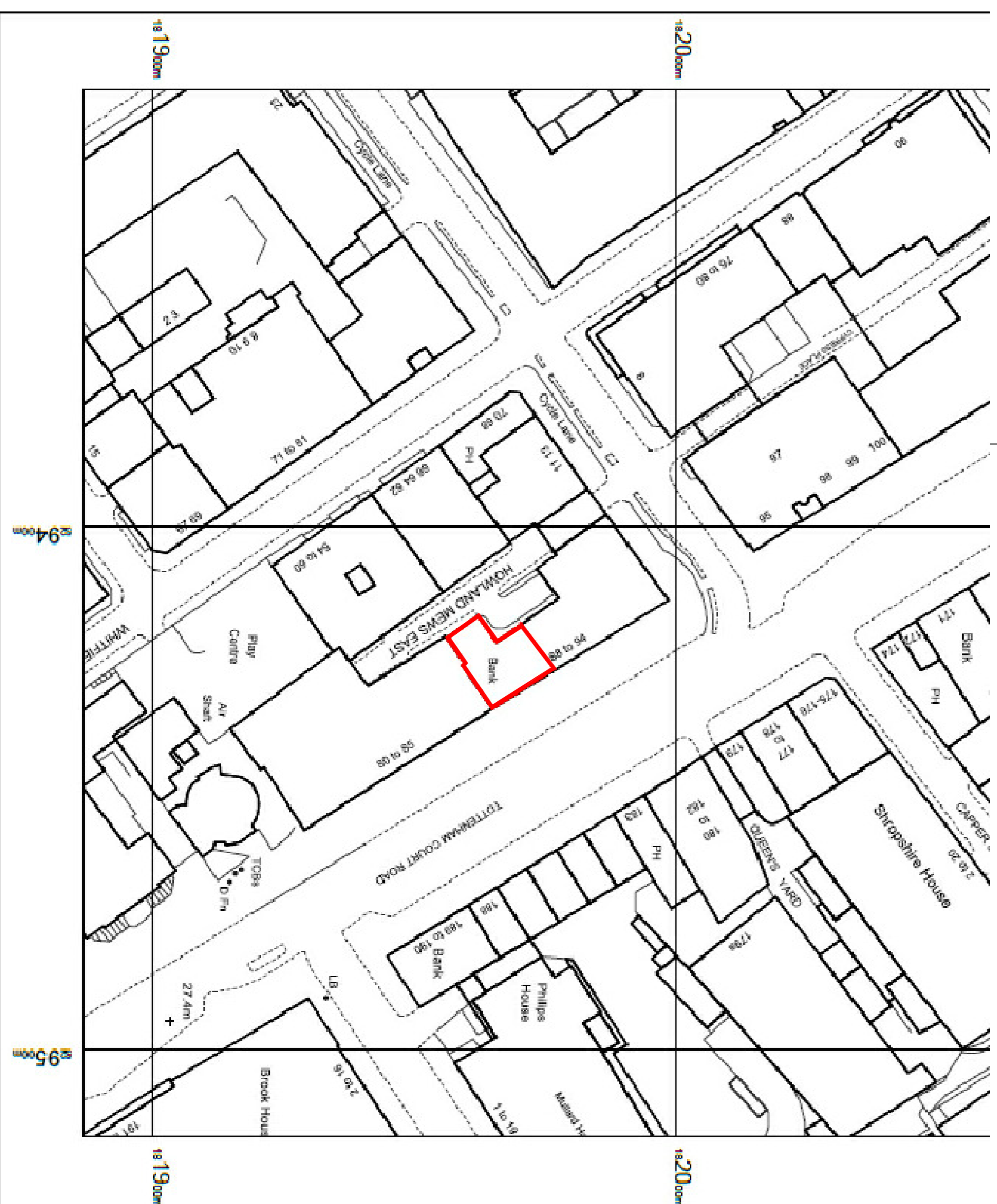
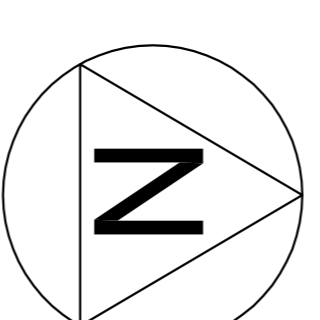


Location of building

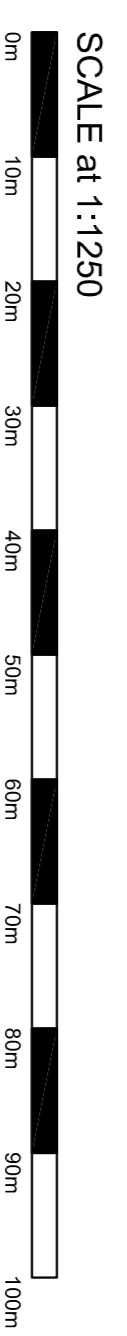
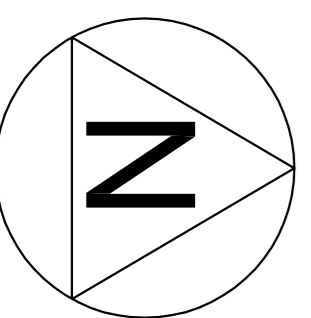
Lloyds, no.88 Tottenham Court Rd



BLOCK PLAN
SCALE 1:500@A3



SITE LOCATION PLAN
SCALE 1:1250@A3



REV / DATE	REVISION	INITIALS
23/12/14	First Issue	HH

LLOYDS BANKING GROUP

ALL DIMENSIONS TO BE VERIFIED PRIOR TO COMMENCING WORK. DRAWING TO BE RETURNED TO CONSULTANT WITH PROJECT SPECIFICATIONS.

THIS DRAWING IS THE PROPERTY OF LLOYDS BANKING GROUP AND COPYRIGHT IS RESERVED. IT IS NOT TO BE REPRODUCED, COPIED, OR DISCLOSED BY OR TO ANY UNAUTHORIZED PERSONS WITHOUT THE WRITTEN CONSENT OF LLOYDS BANKING GROUP - GROUP PROPERTY.

ALL DIMENSIONS SHOWN SHALL BE REFERENCED TO LLOYDS BANKING GROUP'S GROUP PROPERTY

GROUP PROPERTY

REGISTRY, 100 Broad Street, London, W1C 2EG
 EDINBURGH, 150 George Street, Edinburgh, EH2 2JH
 ENGLAND, 150 Broad Street, London, W1C 2EG
 HALIFAX, Trinity Road, Halifax, West Yorkshire, HX1 2RG

PROJECT ADDRESS	SCALE
Brand - Lloyds Bank Tottenham Court Road Tottenham Court Road London, W1P 0ED	A3 - 1:500
DRAWING DESCRIPTION	DATE
SITE LOCATION PLAN	23/12/15
DRAWN BY	DRAWN BY
GW	GW
REVISION	REVISION
-	-

DRAWING NUMBER: 50484500-ARU-SP-0021