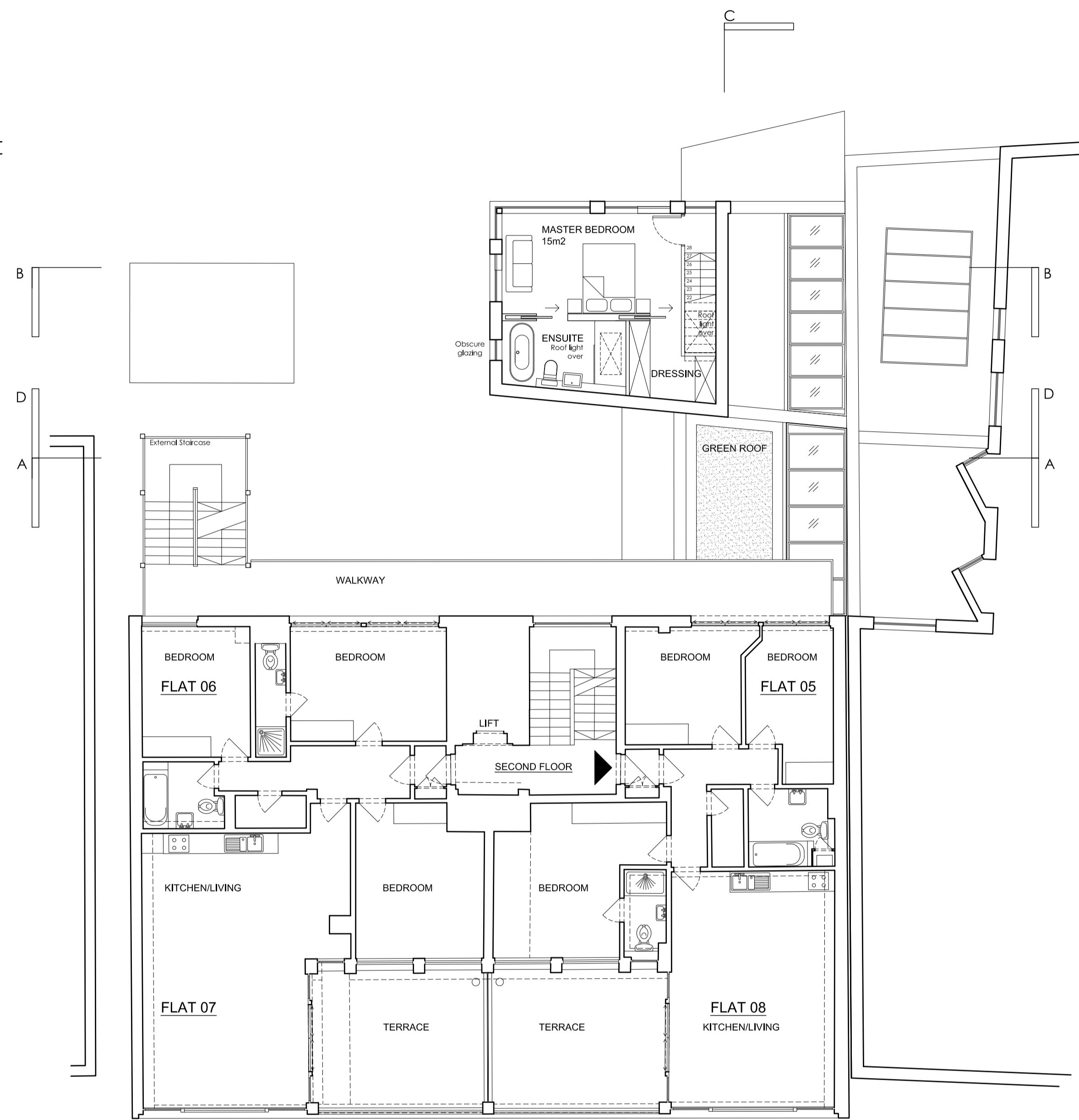
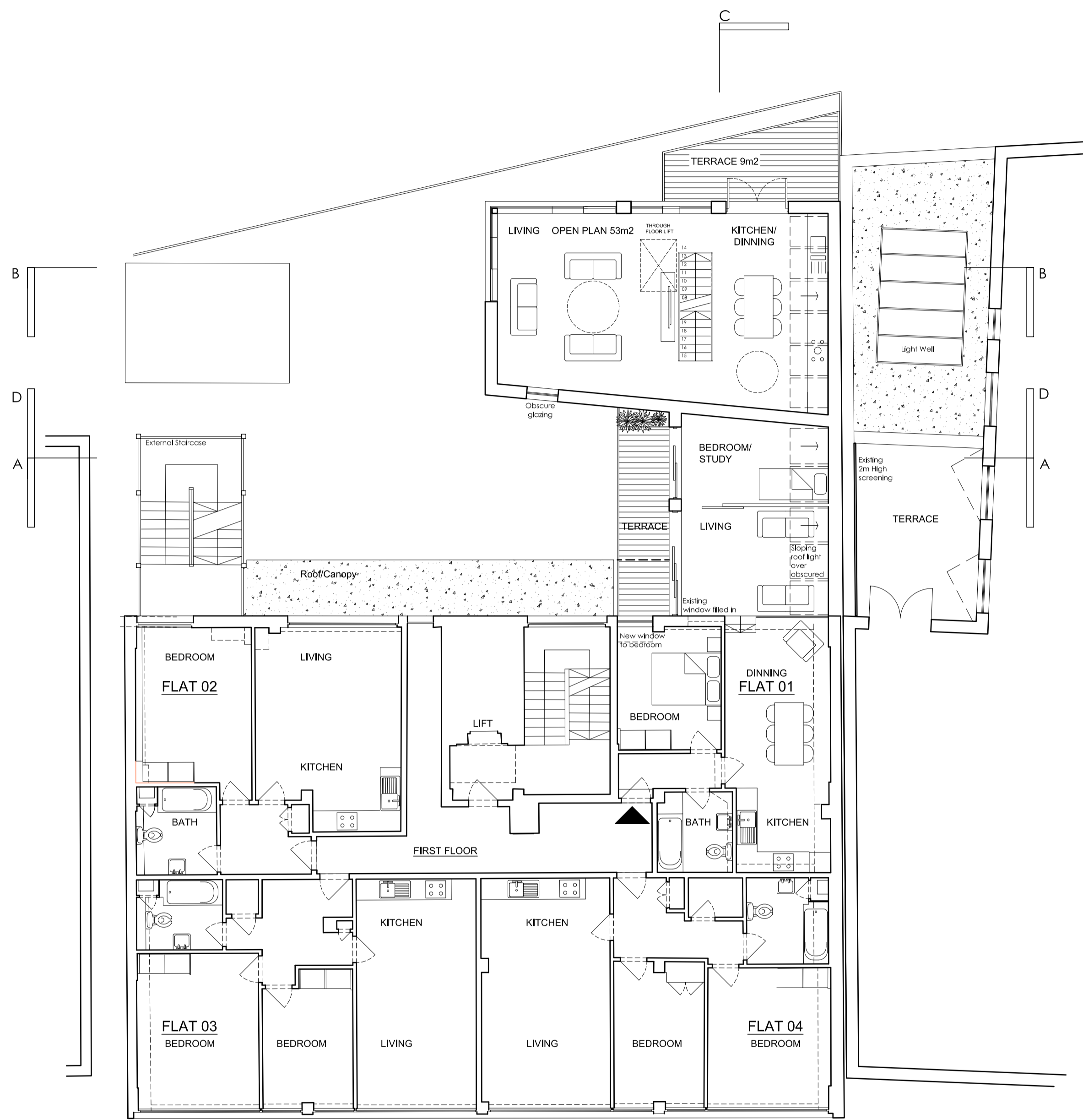


Do not scale off this drawing.

All indicated dimensions to be checked and verified on site by the Main Contractor before commencement of any fabrication drawings or work whatsoever on site.

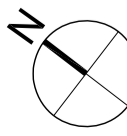
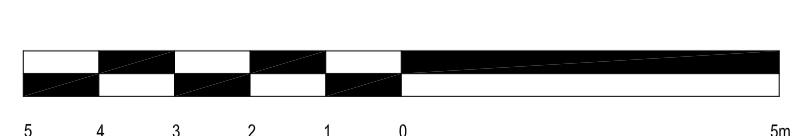
Report all discrepancies to the Architect immediately. This drawing is to be read in conjunction with all the related Architect's and Structural Engineer's drawings, details and all relevant information.



22 ST PANCRAS WAY 18-20 ST PANCRAS WAY 16 ST PANCRAS WAY

FIRST FLOOR

SECOND FLOOR



rev.	rev. date	rev. description

tasou
associates
architects + structural engineers

4 Amwell Street, London, EC1R 1UG
T: 020 7713 7070 F: 020 7713 7071 E: tasou@tasou.co.uk

project
St Pancras Way (18-20)
London, NW1 0QG

dwg title
Proposed
First and Second
Ground Floors

date March 2015	dwg no. PA.02	rev. -
scale @ A1 1:100	job no. 1517	