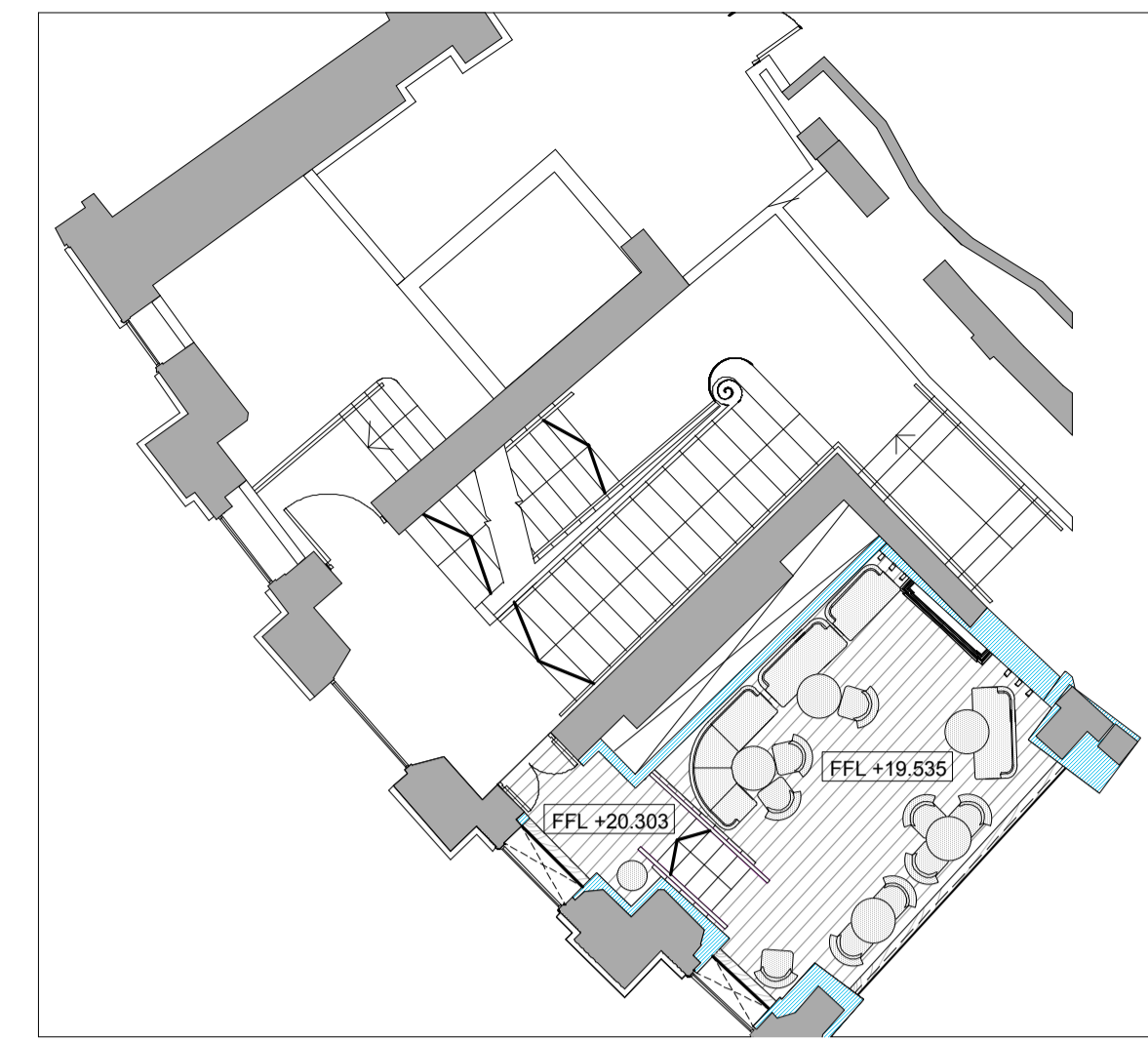


GROUND FLOOR PLAN (EXISTING)



MEZZANINE PLAN

Copyright: All rights reserved. This drawing must not be reproduced without permission.  
 Only the original drawing should be relied upon. Contractors, subcontractors and suppliers must verify all dimensions on site before commencing any work or making any shop drawings.  
 All shop drawings to be submitted to the architect for comment prior to fabrication.  
 This drawing is to be read in conjunction with the Architect's specification, bills of quantities / schedules, structural, mechanical & electrical drawings and all discrepancies are to be reported to the architect.  
 Do not scale from this drawing. Dimensions are in millimetres unless otherwise stated.

PLANNING

Archer Humphries Architects  
 Basement  
 Central House  
 142 Central Street  
 London  
 EC1V 8AR  
 T: 020 7251 8555

project title  
 Great Northern Hotel

drawing title	scale	date
Ground Floor Plan (Existing)	1:200@A3	NOV14
drawing number	drawn	checked
AHA/GNH/TCE/010	MF	DA
	revision	