



- KEY**
- Existing tree retained
 - Existing tree removed
 - New tree
 - New conifer
 - Existing conifer
 - Wildlife flowering/fruited hedgerow
 - Evergreen hedges
 - Grass
 - Long grass
 - Herbaceous borders
 - Ornamental grasses + perennials
 - Pebbles with mosses/low ground cover
 - Communal growing spaces (concrete raised planters)
 - Seating
 - Stable-yard cobbles
 - Granite setts 200x100mm
 - Breedon gravel
 - Sand
 - Concrete flags
 - Reused granite kerbs 300mm wide
 - In situ concrete
 - Tarmac
 - Highway boundaries

DRAFT

East
Architecture landscape
urban design

Unit 8
49-59 Old Street
London EC1V 9HX
T 020 7490 3190
E mail@east.uk.com

www.east.uk.com

PROJECT
Regent's Park Estate

CLIENT
LB Camden

DRAWING STATUS DATE
Stage 3 30th March 2015

SCALE SIZE REV
1:200 A2 -

DRAWING TITLE DRAWING NR
Proposed site plan 114 RPE S1 100
Site 01 / Robert Street Car Park

communal garden

Sorbus hupehensis

Achillea millefolium 'Lansdorferglut'
Verbena bonariensis
Deschampsia cespitosa
Stipa tenuissima
Echinacea purpurea
Phlomis tuberosa

breedon gravel
with drivable sub-base

breedon gravel
[permeable]

Morus nigra or *Juglans regia*

concrete surface / path

Cercis canadensis 'Forest Pansy'










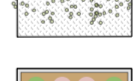






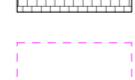

Raised beds with 'starter'
vegetables such as strawberries,
rhubarb and raspberries

Buxus sempervirens

Native hedging:
Corylus avellana
Rosa arvensis
Prunus spinosa
Crataegus monogyna

Salix babylonica var. *pekinensis*
'Tortuosa'

KEY

-  Existing tree retained
-  New tree
-  New fruit tree
-  New special tree on corners
-  Wildlife flowering/fruited hedgerow
-  Evergreen hedges
-  Grass
-  Long grass
-  Herbaceous borders
-  Pebbles with mosses/low ground cover
-  Communal growing spaces (concrete raised planters)
-  Seating
-  Breedon gravel
-  Concrete flags
-  Concrete + granite setts
-  In situ concrete
-  Staffordshire Blue Pavement
-  Highway boundaries

DRAFT

East
Architecture landscape
urban design
Unit 8
49-59 Old Street
London EC1V 9HX
T 020 7490 3190
E mail@east.uk.com
www.east.uk.com

PROJECT
Regent's Park Estate

CLIENT
LB Camden

DRAWING STATUS
Stage 3

DATE
30th March 2015

SCALE
1:200

SIZE
A2

DRAWING TITLE
Proposed site plan
Site 02 /
Former One Stop Shop

DRAWING NR
114 RPE S2 100



Appendix 4: Proposed Drainage Designs



NOTES

- DO NOT SCALE THIS DRAWING ON PRINT OR ELECTRONICALLY. WORK FROM FIGURED DIMENSIONS ONLY.
- No deviation from the details shown on this drawing is allowed without the Client's prior permission in writing.
- Read this drawing with all Architects, Service Engineers and Consultants' relevant details and drawings. NB. Setting-out dimensions as per the architect's drawings take precedence.
- All work is to be in accordance with the relevant specifications, BS 8000, BS 5393, BS 5400, BS 5401, BS 5402, BS 5403, BS 5404, BS 5405, BS 5406, BS 5407, BS 5408, BS 5409, BS 5410, BS 5411, BS 5412, BS 5413, BS 5414, BS 5415, BS 5416, BS 5417, BS 5418, BS 5419, BS 5420, BS 5421, BS 5422, BS 5423, BS 5424, BS 5425, BS 5426, BS 5427, BS 5428, BS 5429, BS 5430, BS 5431, BS 5432, BS 5433, BS 5434, BS 5435, BS 5436, BS 5437, BS 5438, BS 5439, BS 5440, BS 5441, BS 5442, BS 5443, BS 5444, BS 5445, BS 5446, BS 5447, BS 5448, BS 5449, BS 5450, BS 5451, BS 5452, BS 5453, BS 5454, BS 5455, BS 5456, BS 5457, BS 5458, BS 5459, BS 5460, BS 5461, BS 5462, BS 5463, BS 5464, BS 5465, BS 5466, BS 5467, BS 5468, BS 5469, BS 5470, BS 5471, BS 5472, BS 5473, BS 5474, BS 5475, BS 5476, BS 5477, BS 5478, BS 5479, BS 5480, BS 5481, BS 5482, BS 5483, BS 5484, BS 5485, BS 5486, BS 5487, BS 5488, BS 5489, BS 5490, BS 5491, BS 5492, BS 5493, BS 5494, BS 5495, BS 5496, BS 5497, BS 5498, BS 5499, BS 5500.
- DRAWING STATUS**

P - PRELIMINARY - Evolving drawings for approval, Tenders, Bills, etc.
C - CONSTRUCTION - Fully developed drawings issued under instruction for construction.

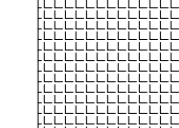



ONLY STATUS C DRAWINGS TO BE USED FOR CONSTRUCTION

6 SUSTAINABILITY CODE
WORK IN PROGRESS
 S0 - Work in progress
SHARED/NON-CONTRACTUAL
 S1 - For information, S2 - For internal review and comment, S3 - For construction approval, S4 - For construction approval.

DOCUMENTATION FOR CONTRACTOR PURPOSES
 D1 - For costing, D2 - For Tender, D3 - For contractor design, D4 - For manufacturer procurement.

CONSTRUCTION
 A - Construction, B - Foundation, C - Foundation but with comments (i.e. areas in abeyance), D - Comprehensive revisions ledger.

7 Denotes Section Number.
 8 Denotes Drawing Number.

-  HARD LANDSCAPING
-  SOFT LANDSCAPING
-  BROWN ROOF
-  GREEN ROOF

Issue No.	Description	Date	By
S1	ISSUED FOR INFORMATION	10.04.15	NEJ

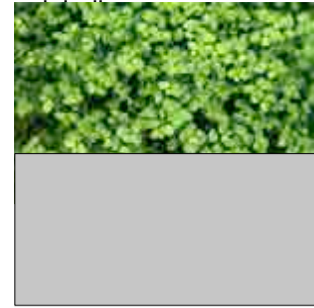
CampbellReith
 consulting engineers

LONDON 020 7340 1700 MANCHESTER 0161 819 3060
 SURREY 01737 784 500 BIRMINGHAM 01675 467 484
 BRISTOL 0117 916 1066 DUBLIN 00 971 4345 7068
 www.campbellreith.com

Job Title	REGENTS PARK ESTATE			
Client	TIBBALDS			
PLOT SURFACES				
drawn	date	scale @ A0	C1 checked	CR Project No.
NEJ	10/04/2015	1:1000@A0	BSF	11775CR015
Doc No.	11775-CRH-Z0-00-SK-C-015	Sheet No.	S0	Sheet Count
			S1	

PLOT	PLOT AREAS				
	TOTAL AREA (M ²)	GREEN ROOF AREA (M ²)	BROWN ROOF AREA (M ²)	SOFT LANDSCAPED AREA (M ²)	HARD LANDSCAPED AREA (M ²)
PLOT 1	2424	518	0	537	1369
PLOT 2	1307	391	0	542	374
PLOT 3	1660	362	0	1055	243
PLOT 4	1805	0	391	1116	298
PLOT 5	1135	88	274	284	489
PLOT 6	1537	0	279	37	1221
PLOT 8	610	0	277	47	286
PLOT 9	776	115	0	16	645

Pebbles &



Privet



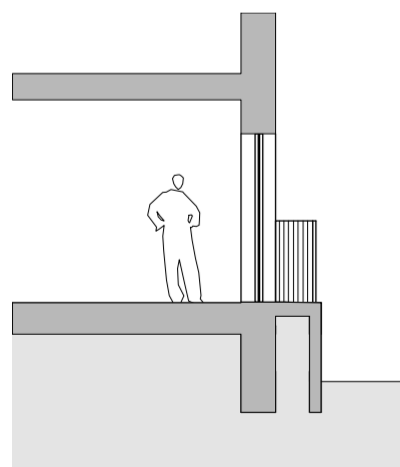
Granite setts



Yellow rose

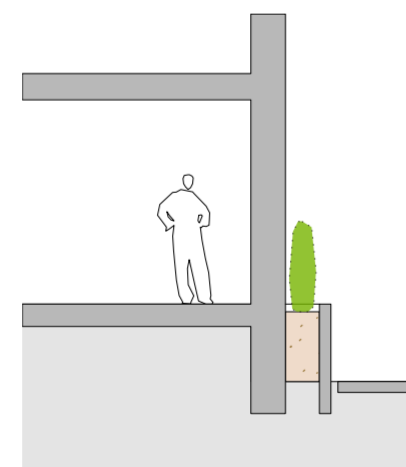


Clematis Bill Mac Kenzie



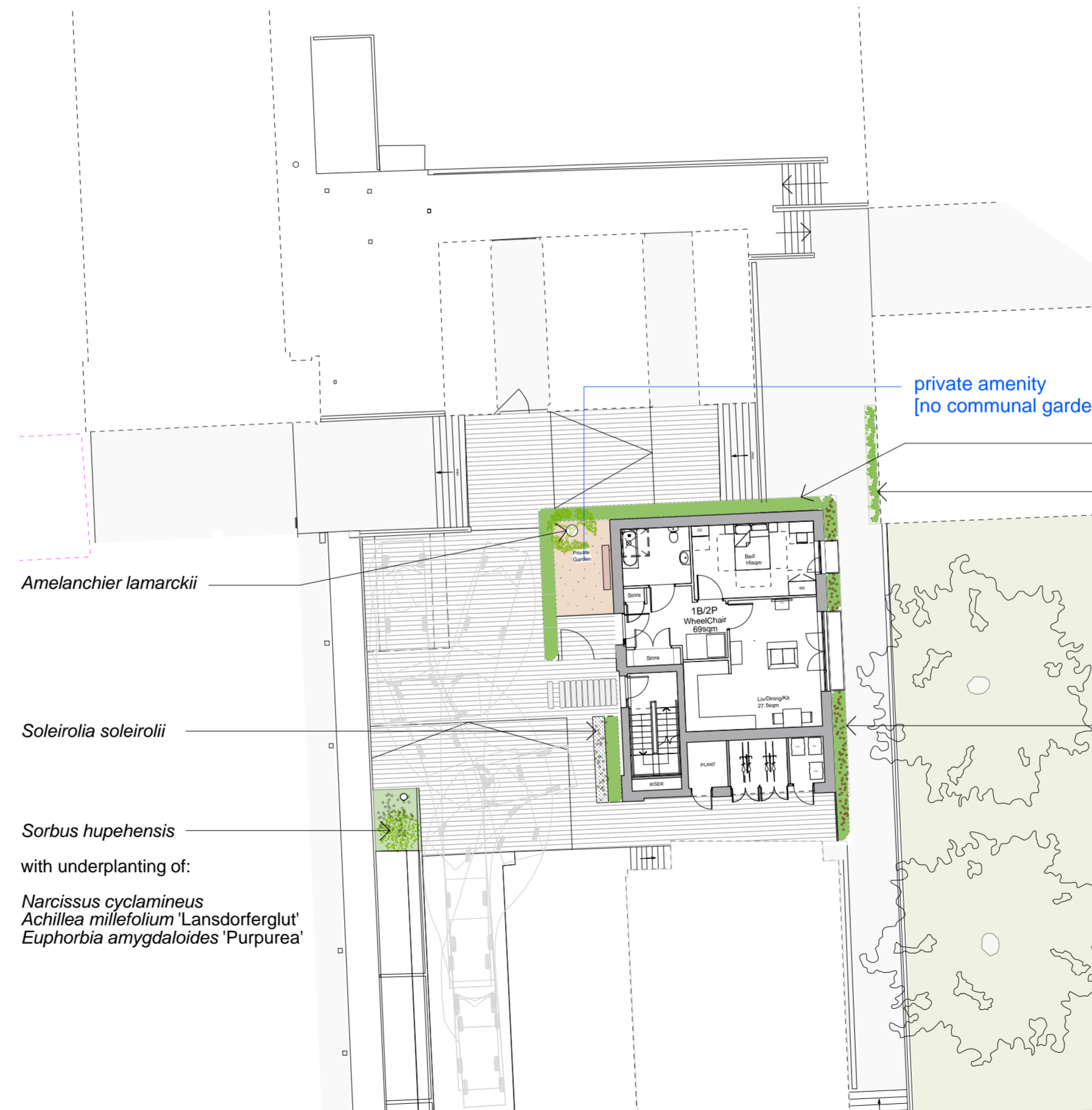
Section through the balcony on the East façade

1:100



Section through the planters on the East façade

1:100



Plan

1:200

KEY

-  New special tree on corners
-  New tree
-  Underplanting
-  Flowering/fruitley hedgerow
-  Evergreen hedges
-  Climbers
-  Breedon gravel
-  Pebbles with mosses
-  Granite setts 200x100mm
-  Reused granite kerbs 300mm wide
-  Highway boundaries

DRAFT

East
Architecture landscape
urban design

Unit 8
49-59 Old Street
London EC1V 9HX
T 020 7490 3190
E mail@east.uk.com

www.east.uk.com

PROJECT

Regent's Park Estate

CLIENT

LB Camden

DRAWING STATUS

Stage 3

DATE

2nd April 2015

SCALE

varies

SIZE

A3

REV

-

DRAWING TITLE

Proposed site plan and sections
Site 10 / St. Bedes
Mews

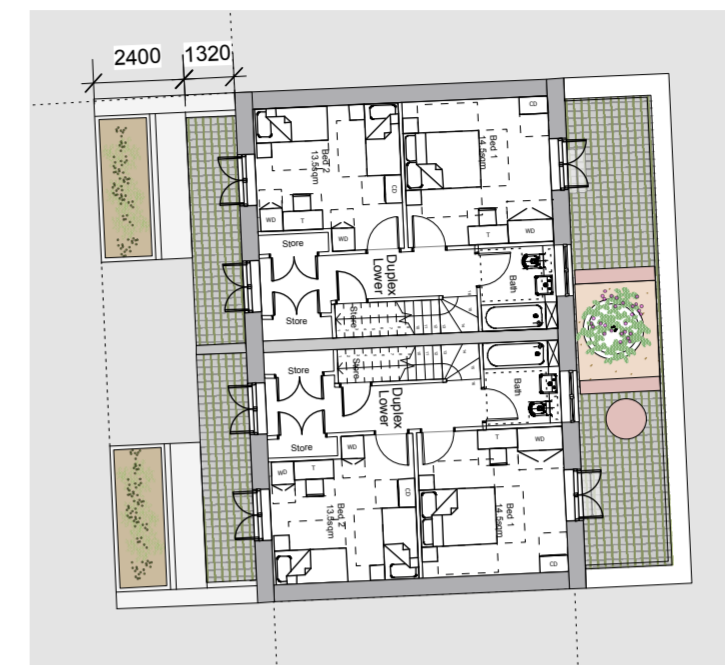
DRAWING NR

114 RPE S10 100

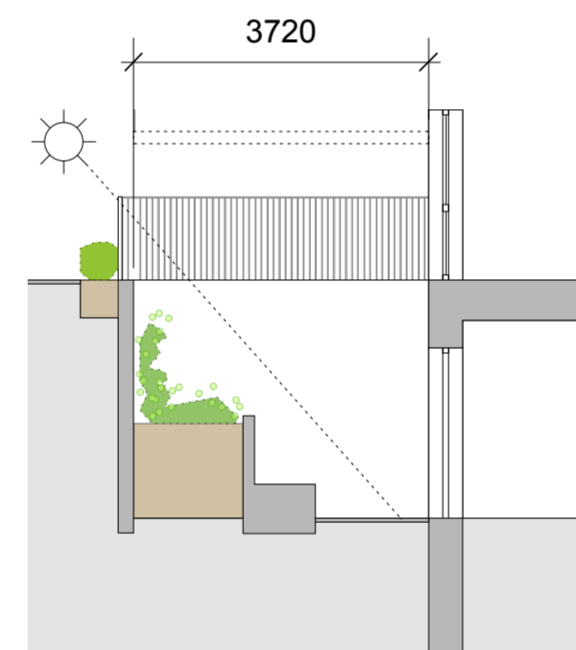


Ground Floor Plan
1:200

private amenity
[no communal gardens]



Basement Plan
1:200



Section through the basement
1:100

DRAFT

East
Architecture landscape
urban design

Unit 8
49-59 Old Street
London EC1V 9HX
T 020 7490 3190
E mail@east.uk.com

www.east.uk.com

PROJECT
Regent's Park Estate

CLIENT
LB Camden

DRAWING STATUS	DATE
Stage 3	2nd April 2015

SCALE	SIZE	REV
varies	A3	-

DRAWING TITLE	DRAWING NR
Proposed site plan and sections Site 6 / Cape of good hope	114 RPE S6 100

Low hedging (300 - 450mm height):

Buxus sempervirens

Native hedging (600 - 1200mm height):

Rosa arvensis
Corylus avellana
Crataegus monogyna

private amenity



Raised planter:

Euphorbia characias
Geranium 'Patricia'



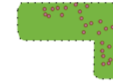





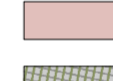
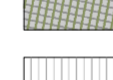
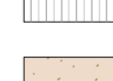

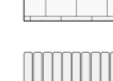



Raised planter:

Magnolia stellata

Underplanted with:
Vinca minor 'Alba'
Galanthus nivalis

Sedum mix

KEY

-  Existing tree retained
-  New special tree on corners
-  Wildlife flowering/fruited hedgerow
-  Evergreen hedges
-  Herbaceous borders
-  Ornamental grasses + perennials
-  Sedum
-  Communal growing spaces (concrete raised planters)
-  Seating
-  Stable-yard cobbles
-  Granite setts 200x100mm
-  Breedon gravel
-  Concrete flags
-  Reused granite kerbs 300mm wide
-  Chasse-roue (reused bollard)
-  Highway boundaries

DRAFT

East
Architecture landscape
urban design
Unit 8
49-59 Old Street
London EC1V 9HX
T 020 7490 3190
E mail@east.uk.com
www.east.uk.com

PROJECT
Regent's Park Estate

CLIENT
LB Camden

DRAWING STATUS DATE
Stage 3 30th March 2015

SCALE SIZE REV
varies A2 -

DRAWING TITLE DRAWING NR
Proposed site plan & section 114 RPE S9 100
Site 9 / Victory pub
Version 01

Proposed plan 1:200



private garden

Carpinus betulus
hedging

Underplanting:
Narcissus 'Jenny'
Fritillaria meleagris
Galanthus nivalis
Primula vulgaris

Shrubs such as
Corylus avellana
and *Hamamelis mollis*

Cluster of
Betula pendula




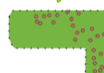



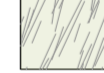
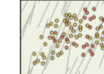
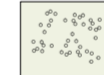
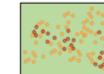

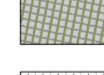


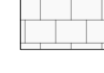




Low play maze (max.
500mm height)
Buxus sempervirens

Echinacea purpurea
Verbena bonariensis
Euphorbia amygdaloides *Purpurea'*
Deschampsia cespitosa
Thymus praecox

Acer griseum

Carpinus betulus
hedging

KEY

-  Existing tree retained
-  Existing tree removed
-  New tree
-  Wildlife flowering/fruited hedgerow
-  Evergreen hedges
-  Tree trunks
-  Grass
-  Long grass
-  Flowering meadow
-  Underplanting
-  Herbaceous borders
-  Seating
-  Stable-yard cobbles
-  Granite setts 200x100mm
-  Breedon gravel
-  Concrete flags
-  Concrete + granite setts
-  Reused granite kerbs 300mm wide
-  Highway boundaries
-  Water tank

DRAFT

East
Architecture landscape
urban design

Unit 8
49-59 Old Street
London EC1V 9HX
T 020 7490 3190
E mail@east.uk.com

www.east.uk.com

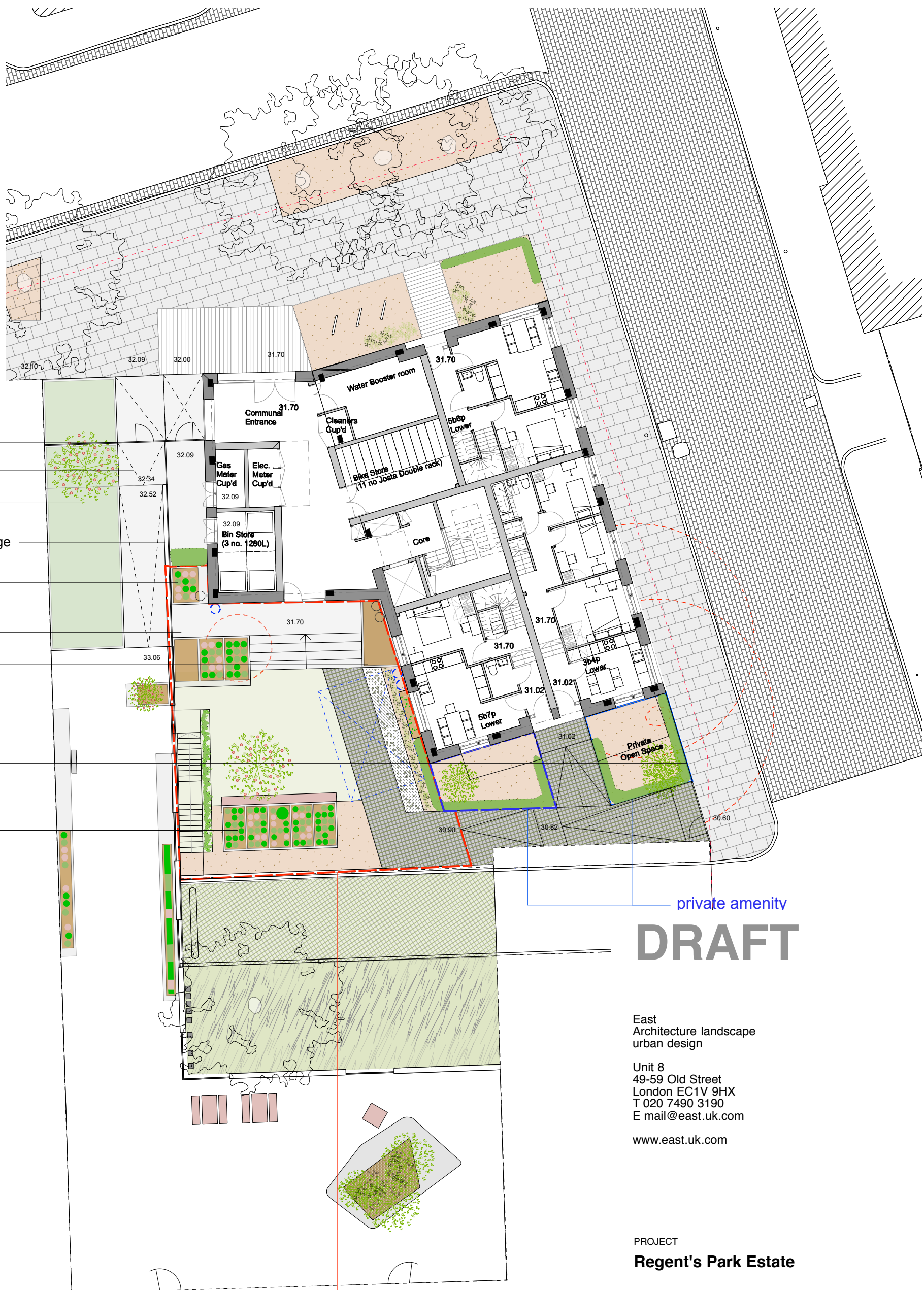
PROJECT
Regent's Park Estate

CLIENT
LB Camden

DRAWING STATUS DATE
Stage 3 30th March 2015

SCALE SIZE REV
1:200 A2 -

DRAWING TITLE DRAWING NR
Proposed site plan 114 RPE S4 100
Site 04 / Newlands Plot



- low gates
- existing ramp to deck
- new raised planter on concrete ramp
- new brick wall to form edge to ramp & new parapet
- separation allowed by community planter
- Community planter
- Private planter
- retaining wall
- Community planter

private amenity

DRAFT

East
 Architecture landscape
 urban design

Unit 8
 49-59 Old Street
 London EC1V 9HX
 T 020 7490 3190
 E mail@east.uk.com

www.east.uk.com

PROJECT
Regent's Park Estate

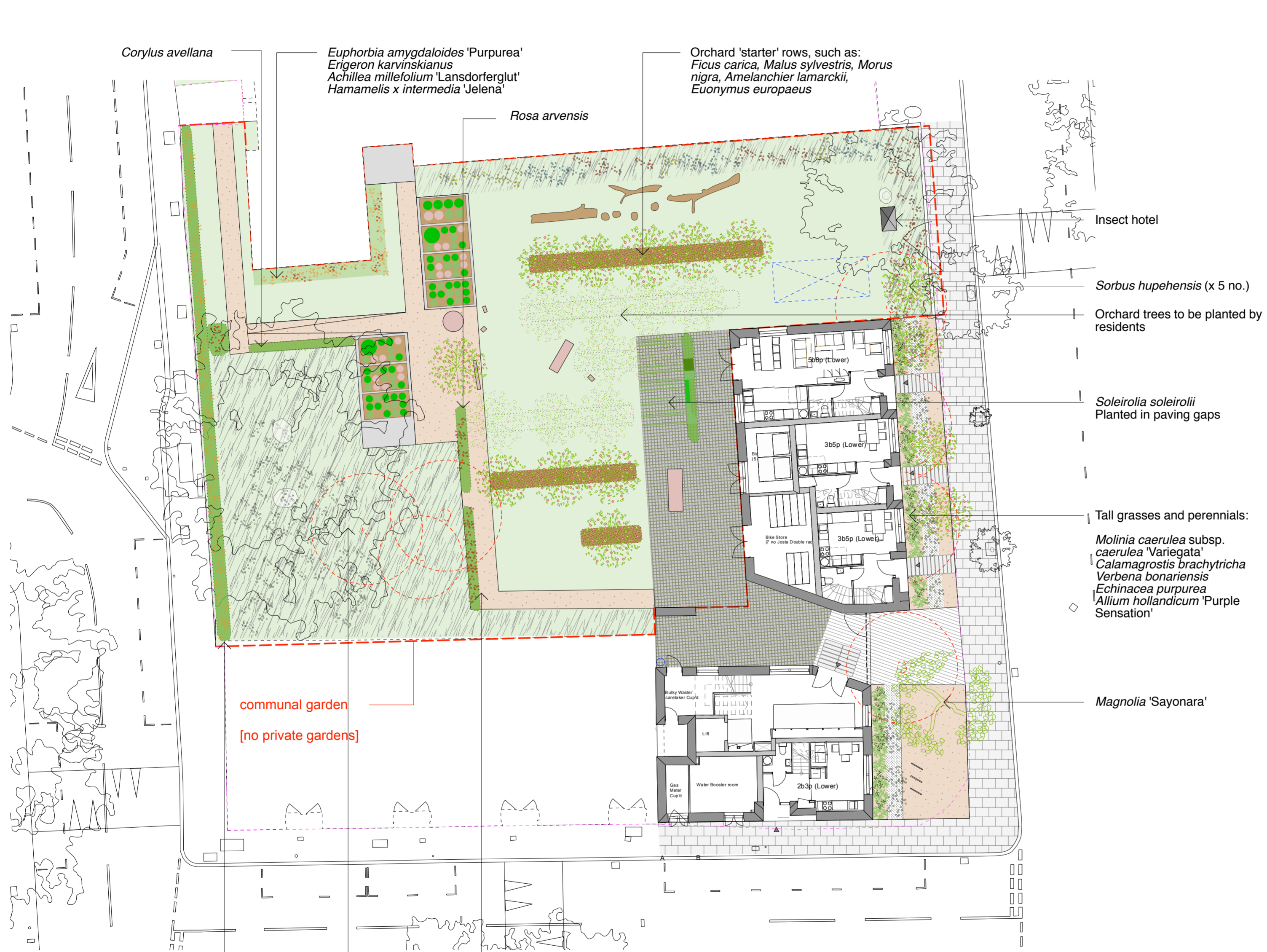
CLIENT
 LB Camden

DRAWING STATUS DATE
 Stage 3 30th March 2015

SCALE SIZE REV
 1:200 A3 -

DRAWING TITLE DRAWING NR
 Proposed site plan 114 RPE S5 100
 Site 5 / Dick Collins Hall

communal garden



Corylus avellana

Euphorbia amygdaloides 'Purpurea'
Erigeron karvinskianus
Achillea millefolium 'Lansdorferglut'
Hamamelis x intermedia 'Jelena'

Orchard 'starter' rows, such as:
Ficus carica, *Malus sylvestris*, *Morus nigra*, *Amelanchier lamarckii*,
Euonymus europaeus

Rosa arvensis

Insect hotel

Sorbus hupehensis (x 5 no.)

Orchard trees to be planted by residents

Soleirolia soleirolii
 Planted in paving gaps

Tall grasses and perennials:
Molinia caerulea subsp. *caerulea* 'Variegata'
Calamagrostis brachytricha
Verbena bonariensis
Echinacea purpurea
Allium hollandicum 'Purple Sensation'

Magnolia 'Sayonara'

communal garden
 [no private gardens]

Native hedging:
Rubus fruticosus 'Loch Ness'
Corylus avellana
Prunus spinosa

Underplanting: *Rosa canina*
Galanthus nivalis
Narcissus 'Jenny'
Fritillaria meleagris

- KEY
- Existing tree retained
 - Existing tree removed
 - New fruit tree
 - New special tree on corners
 - Wildlife flowering/fruited hedgerow
 - Evergreen hedges
 - Tree trunks
 - Grass
 - Long grass
 - Flowering meadow
 - Underplanting
 - Herbaceous borders
 - Ornamental grasses + perennials
 - Pebbles with mosses/low ground cover
 - Communal growing spaces (concrete raised planters)
 - Seating
 - Stable-yard cobbles
 - Granite setts 200x100mm
 - Wood chip mulch
 - Breedon gravel
 - Concrete flags
 - Reused granite kerbs 300mm wide
 - In situ concrete
 - Highway boundaries
 - Water tank

DRAFT

East
 Architecture landscape
 urban design
 Unit 8
 49-59 Old Street
 London EC1V 9HX
 T 020 7490 3190
 E mail@east.uk.com
 www.east.uk.com

PROJECT
Regent's Park Estate

CLIENT
 LB Camden

DRAWING STATUS	DATE	
Stage 3	30th March 2015	
SCALE	SIZE	REV
1:200	A2	-

DRAWING TITLE	DRAWING NR
Proposed site plan Site 03 / Varndell Street Corner	114 RPE S3 100