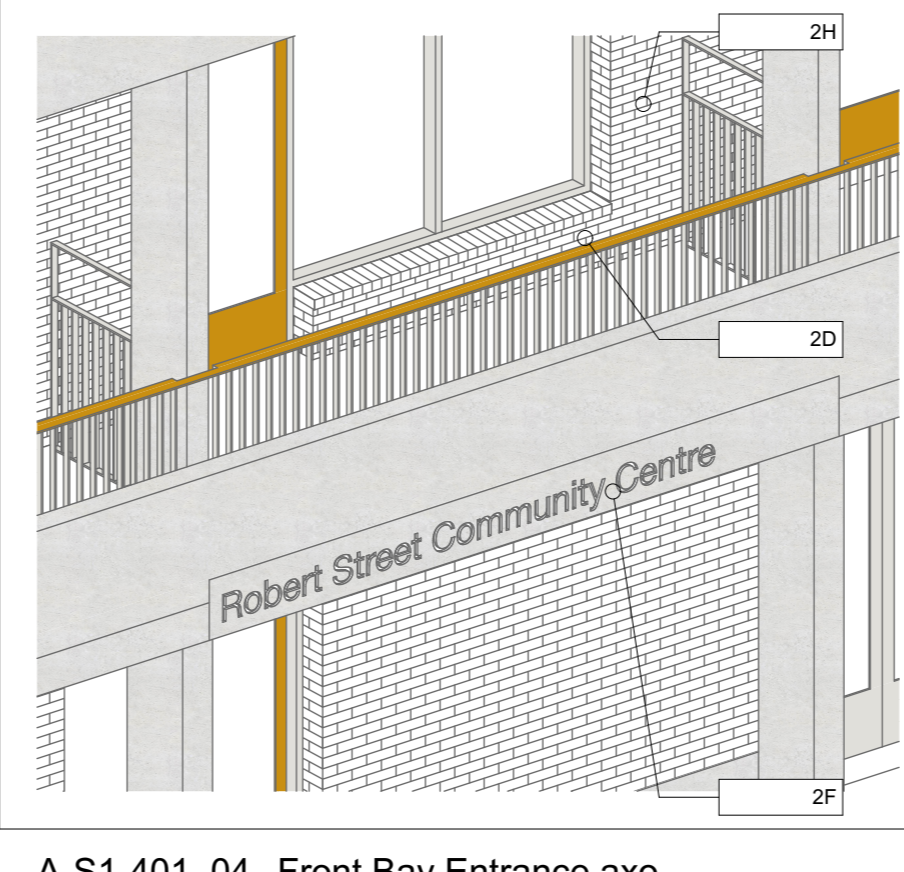
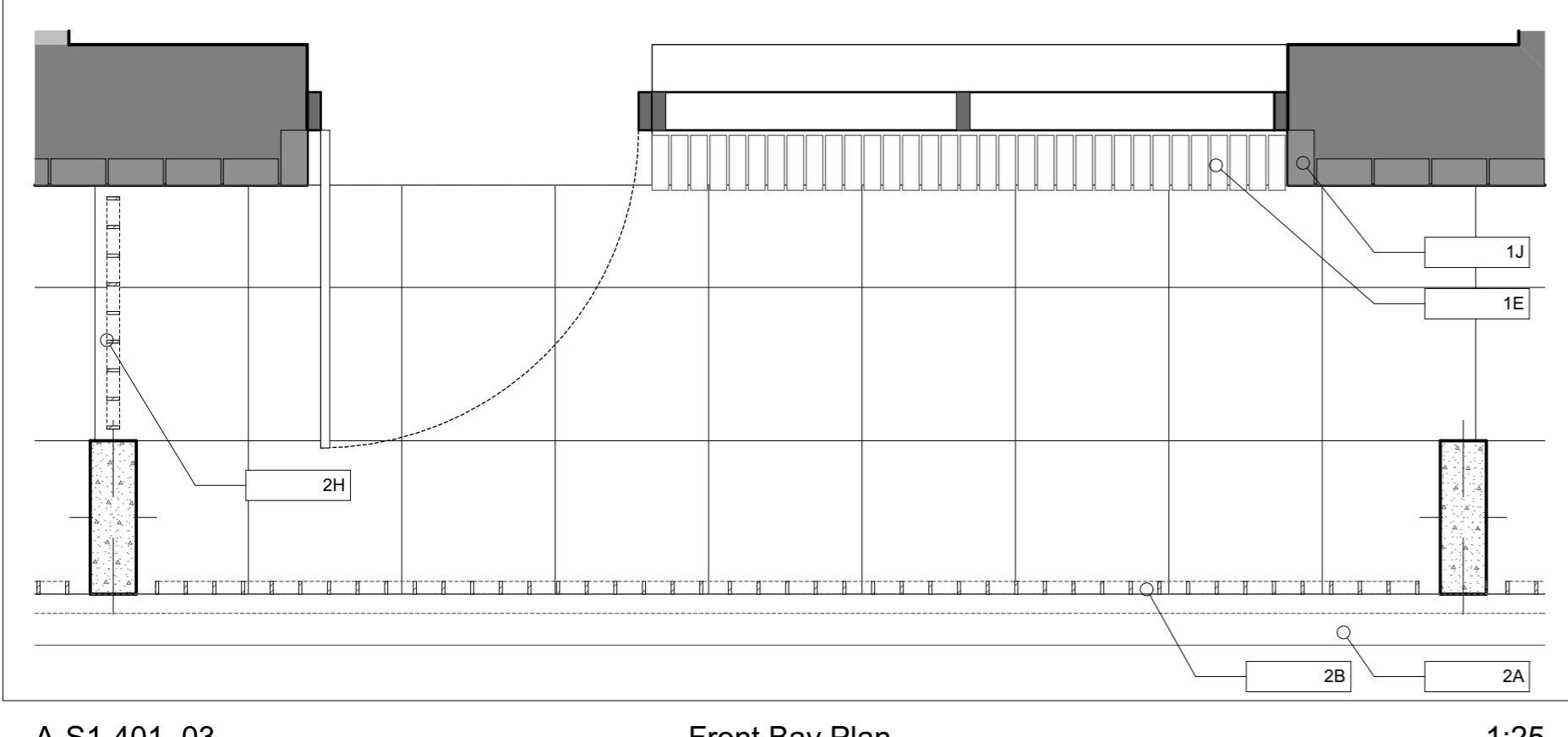


A-S1-401\_01 Front Bay Elevation 1:25

A-S1-401\_02 Front Bay Section 1:25



A-S1-401\_03 Front Bay Plan 1:25

A-S1-401\_04 Front Bay Entrance axo

**Specification Key**

- External Walls:**
  - Light Buff coloured clay brickwork, as Mystique by Traditional Brick and Stone, or similar
  - Grey-White mortar, flush pointed
  - Pre-cast reconstituted stone banding cast to match and finished with Keim Concrete Lasur stain CL001 (white/grey)
  - Pre-cast reconstituted stone upstands/cills to match 1c.
  - Pre-cast brick gills, with metal drip detail
  - Pre-fabricated Full brick lintels
  - Brick on edge coping to match 1a
  - 215mm deep brick reveal to all windows reveals
  - Pre-cast reconstituted stone canopy to match 1c banding
- Precast Loggia Balcony Structure:**
  - Fair faced concrete structure cast to match and finished with Keim Concrete Lasur stain CL001 (white/grey)
  - Bespoke PPC metalwork balustrading with flat bar uprights, finished in MIO, Light Grey Finish as Leigh's paints R8051 or similar
  - Bespoke PPC (RAL 7032) metalwork MVHR extract grilles to each unit, concealed within lintel recess.
  - Horizontal balustrade flat bar at top. To run in front of column line PPC Golden Yellow (RAL 1004)
  - Concrete soffits to balcony to match 2a.
  - Pre-cast reconstituted stone recessed signage, Helvetica Neue Typeface finish to match 2a.
  - Concrete casting joints (if required)
  - Bespoke PPC metalwork balcony dividing balustrades, finished in MIO Light Grey Finish as Leigh's paints R8051 or similar
  - Deep concrete balcony structure to allow depth to form horizontal drainage to indicated downpipes on south facade.
- Windows & Doors:**
  - Composite timber & aluminium windows, PPC Pebble Grey (RAL 7032) finish generally, max frame size 54mm
  - PPC RAL 7032 Terrace Doors w Golden Yellow (RAL 1004) coloured panel front doors leaf with glazed fanlight above rest of frame as PPC Pebble Grey (RAL 7032)
  - PPC Golden Yellow (RAL 1004) coloured panel front doors leaf with glazed fanlight above rest of frame as PPC Pebble Grey (RAL 7032)
  - PPC Pebble Grey (RAL 7032) to Communal doors
  - Internal Steel/Aluminium security grilles, as Armastik 95 by Armashield. Finished in PPC Pebble Grey (RAL 7032)
- Roofs & Amenity Spaces:**
  - Green/brown roof
  - Roof access hatch
- Deck Access Terrace**
  - Concrete pavers on pedestal system
  - Lightweight metal access platform over lightwell
  - External Lighting within entrance as Guzzini Kriss fitting or similar
  - Brick Planter to match 1a
  - Flender finish to inner side of deck wall. To match 2a.
- Rain Water/Metalwork**
  - Internal DPs within core
  - External DPs to front and rear elevation to be metal PPC RAL 7032 Pebble Grey
  - PPC Pebble Grey (RAL 7032) Metalwork finish
  - Trigger Head PPC to match 6b

REV	DATE	DESCRIPTION

0 1m

CLIENT: London Borough of Camden

PROJECT NAME: Regent's Park Estate Infill

PROJECT NO: 1328

DRAWING NAME: Robert Street Car Park - Bay Elevation 01

SCALE: 1:25, 1:50 @ A1

STATUS: Planning

DATE: 28/05/2015

DRAWN BY: OFFICE@MAE-LONDON.CO.UK

DESKTOP: 1328-P1-401

REV: -

**mae**

1 Naoraji Street London WC1X 0GB  
 t +44 (0)20 7704 6060  
 e office@mae-london.co.uk  
 w mae-llp.co.uk