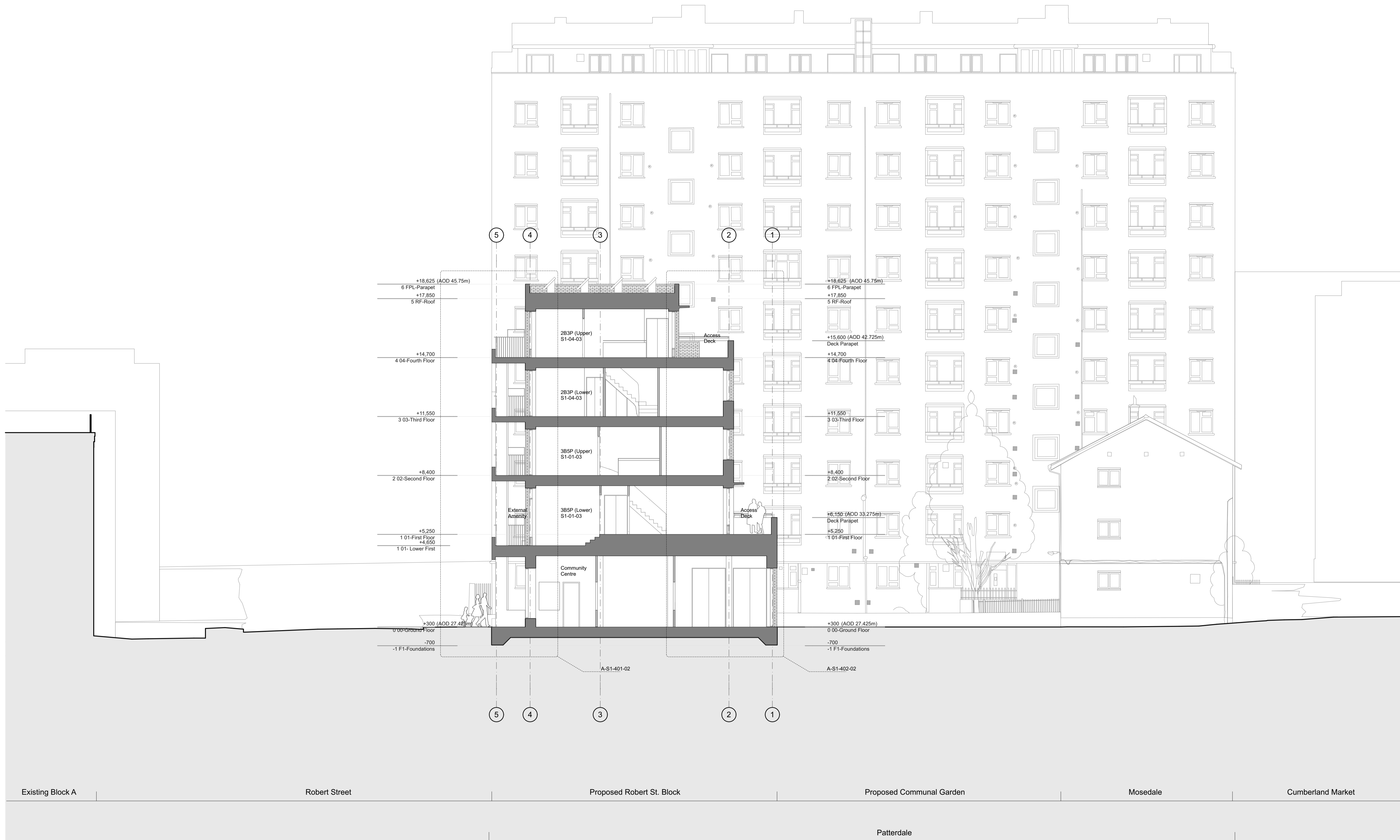


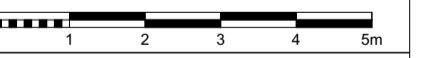
For materials and details, please refer to 1328_400 series drawings and Design & Access statement section 6, materials page.



REV	DATE	DESCRIPTION
-----	------	-------------

- GENERAL NOTES**
- Measurements are based on metric system.
 - All levels are relative to Ordnance Datum (OSD) unless otherwise stated.
 - Dimensions are given in millimetres (mm).
 - Dimensions are given in metres (m).
 - Dimensions are given in feet (ft) and inches (in).
 - Dimensions are given in feet (ft) and inches (in).
 - Dimensions are given in feet (ft) and inches (in).
 - Dimensions are given in feet (ft) and inches (in).

The data contained in this document is the property of mae. It is not to be used for any other purpose without the written consent of mae. It is not to be used for any other purpose without the written consent of mae.



mae
 1 Naoroji Street London WC1X 0GB
 t +44 (0)20 7704 6060
 e office@mae-llp.co.uk
 w mae-llp.co.uk

CLIENT London Borough of Camden	
PROJECT NAME Regent's Park Estate Infill	PROJECT NO. 1328
DRAWING NAME Robert Street Car Park - Section AA	
STATUS Planning Draft	SCALE 1:100 @ A1
DRAWN BY	DATE 28/05/2015
1328-P1-201	REV -